

CONNECTOR MANUFACTURERS

TOPTek®
HARDWARE ELECTRONIC MANUFACTURER

 www.toptek-co.com

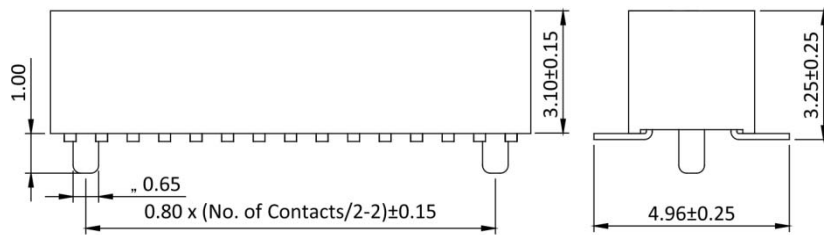
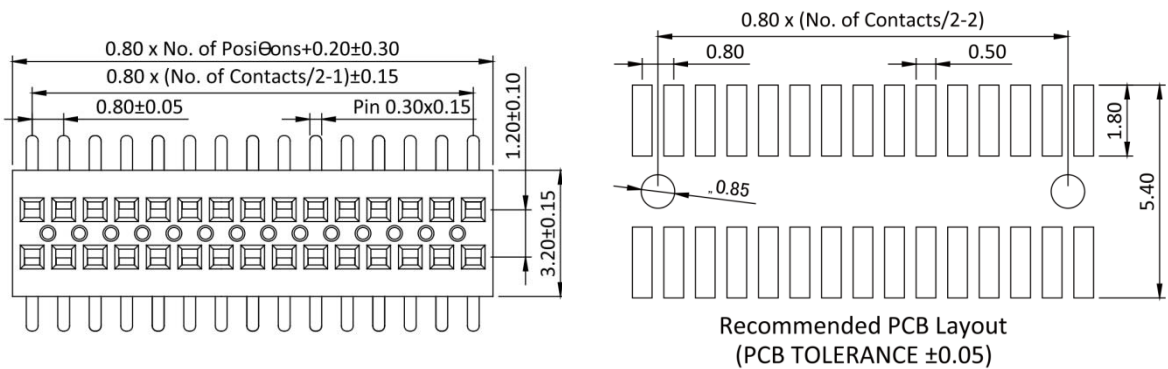
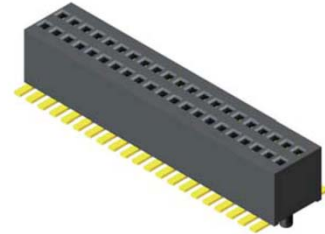
Female Header 0.8mm H=3.1mm 2 Row SMT Type

Specifications

Current Rate: 1 AMP
Insulation Resistance: 1000MΩ Min.
Contact Resistance: 20mΩ Max.
Dielectric Voltage: 500V AC for one minute
Operation Temperature: -40°C to +105°C

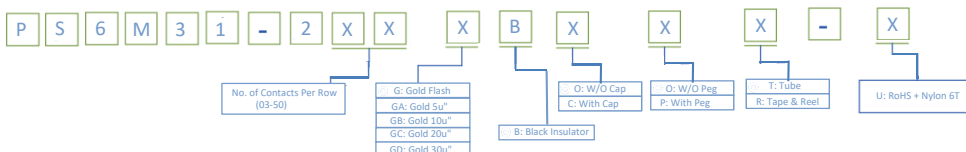
Material

Insulator: Hi-Temp. Thermoplastic, UL 94V-0
Terminal: Copper Alloy
Plating: Gold Plated



Part No.: PS6M31-2XX-U

ORDER INFORMATION



©: Standard Recommend

www.toptek-co.com

info@toptek-co.com



RoHS