

CONNECTOR MANUFACTURERS

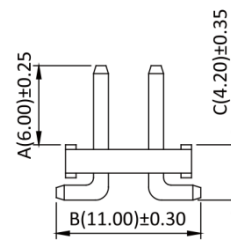
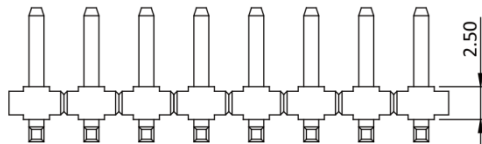
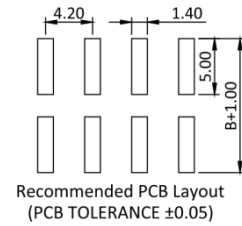
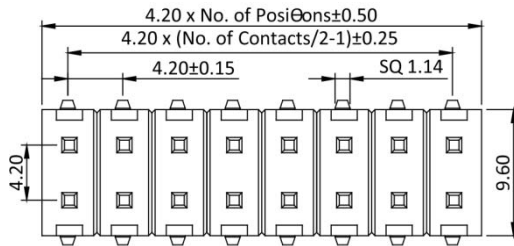
TOPTEK®
HARDWARE ELECTRONIC MANUFACTURER

www.toptek-co.com

Pin Header 4.2mm 2 Row H=2.5mm SMT Type

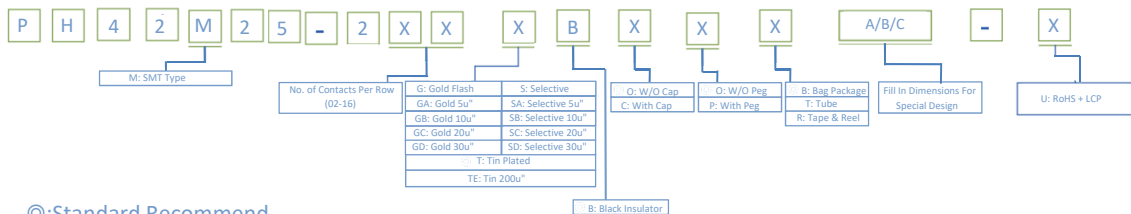
Specifications
 Current Rate: 7 AMP
 Insulation Resistance: 1000MΩ Min.
 Contact Resistance: 20mΩ Max.
 Dielectric Voltage: 1000V AC for one minute
 Operation Temperature: -40°C to +105°C

Material
 Insulator: Polyester, UL 94V-0
 ©Standard SMT: LCP
 Straight: Nylon 66
 Terminal: Copper Alloy
 Plating: Tin Plated



Part No.: PS396M89-1XX-X

ORDER INFORMATION



©: Standard Recommend

www.toptek-co.com

info@toptek-co.com

