

Mini Match

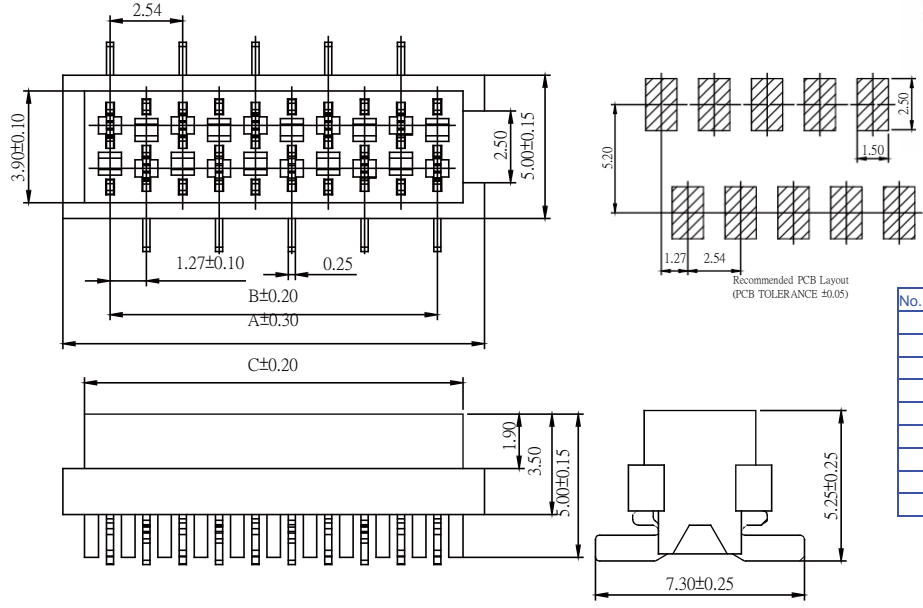
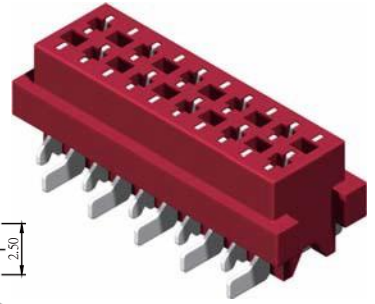
Mini Match Female SMT Type

Specifications

Current Rate:1.0 AMP
Insulation Resistance:100MΩ Min
Contact Resistance:20mΩ Max
Dielectric Voltage:500V AC for one minute
Operation Temperature:-40°C to +105°C

Material

Insulator:Polyester,UL 94V-0
Standard:Nylon 46
Terminal:Copper Alloy



No. of Contacts	Dim. A	Dim. B	Dim. C
4	7.00	3.81	5.60
6	9.54	6.35	8.14
8	12.08	8.89	10.68
10	14.62	11.43	13.22
12	17.16	13.97	15.76
14	19.70	16.51	18.30
16	22.24	19.05	20.84
18	24.78	21.59	23.38
20	27.32	24.13	25.92

Part No.:MIMM-XX-U

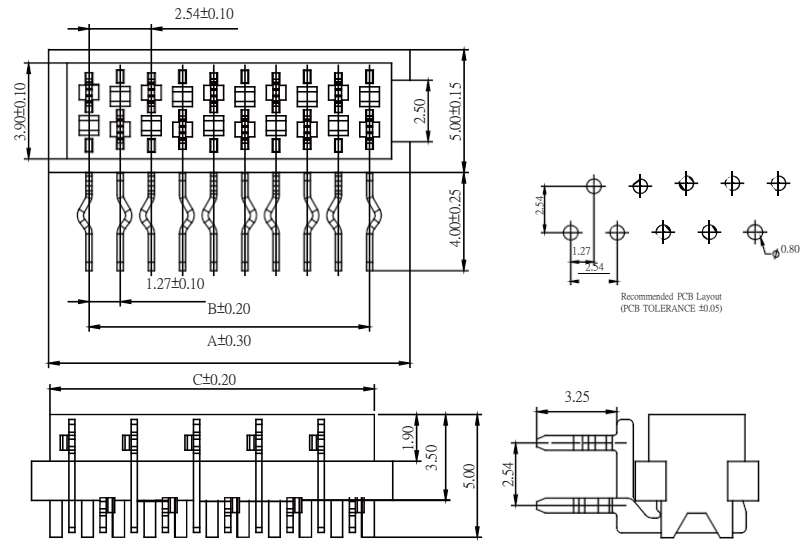
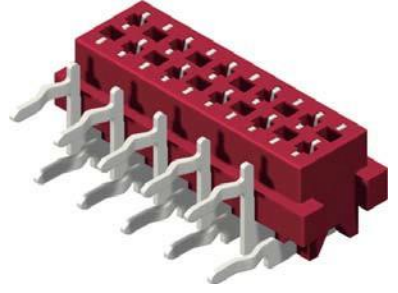
Mini Match Female Right Angle Type

Specifications

Current Rate:1 AMP
Insulation Resistance:100MΩ Min
Contact Resistance:20mΩ Max
Dielectric Voltage:500V AC for one minute
Operation Temperature:-40°C to +105°C

Material

Insulator:Polyester,UL 94V-0
Standard:Nylon 46
Terminal:Copper Alloy



No. of Contacts	Dim. A	Dim. B	Dim. C
4	7.00	3.81	5.60
6	9.54	6.35	8.14
8	12.08	8.89	10.68
10	14.62	11.43	13.22
12	17.16	13.97	15.76
14	19.70	16.51	18.30
16	22.24	19.05	20.84
18	24.78	21.59	23.38
20	27.32	24.13	25.92

Part No.:MIMR-XX-U

