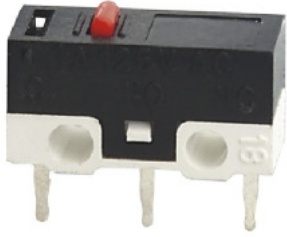




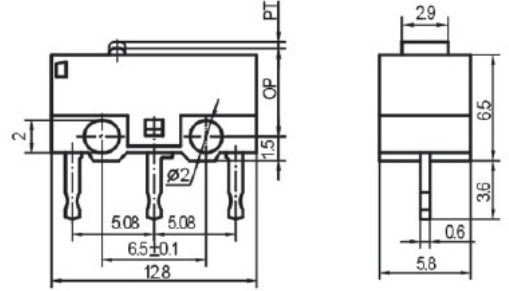
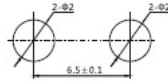
KW10 Series Specification

1. Rating: 1A 125/250VAC
2. Contact Resistance: 30m Ω max
3. Insulation Resistance: 250VDC 100M Ω min

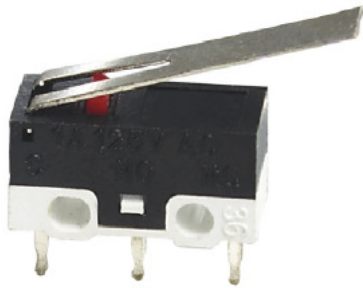
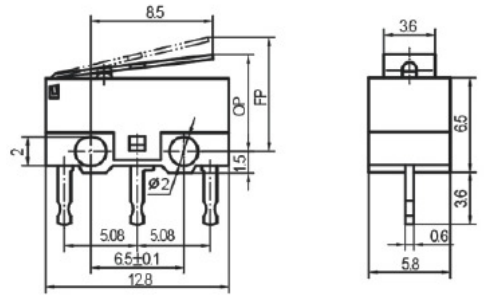
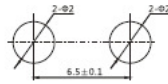
1. Dielectric strength: 1000VAC, 1Minute
2. Ambient Temperature: -25°C ~ +65°C
3. Electrical Life: 30,000 Cycles



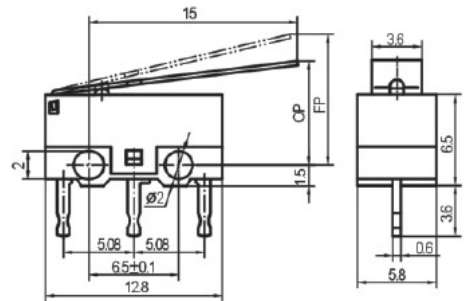
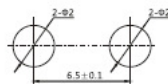
KW10-Z0P
No lever



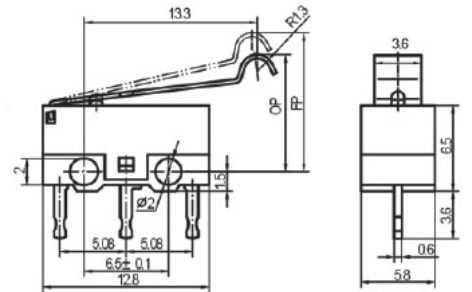
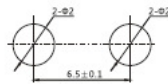
KW10-Z1P
Short lever



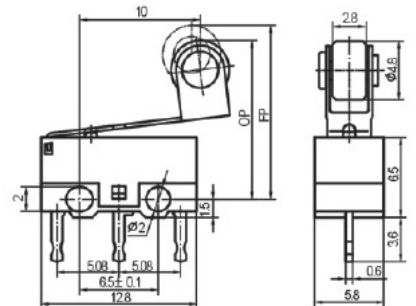
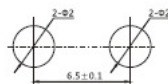
KW10-Z2P
Long lever



KW10-Z3P
Arc lever



KW10-Z4P
Roller lever



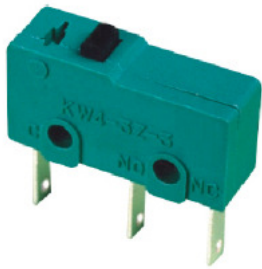


KW4 Series

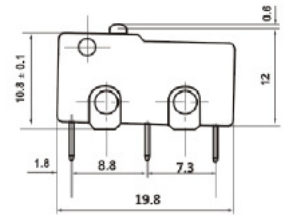
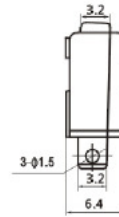
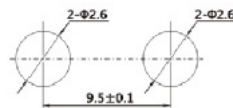
Specification

- 1. Rating:()5A 125/250VAC
(B)3A 125/250VAC
- 2. Contact Resistance:30m Ω max
- 3. Insulation Resistance:500VDC 100M Ω min

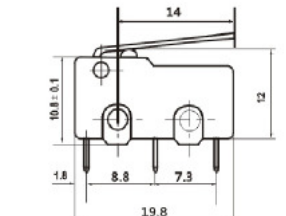
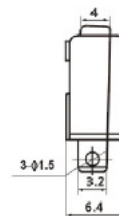
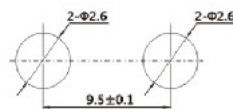
- 1. Dielectric strength:1500VAC,1Minute
- 2. Ambient Temperature:-25°C~ +80°C
- 3. Electrical Life:100,000 Cycles



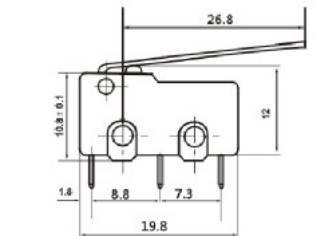
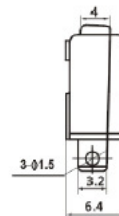
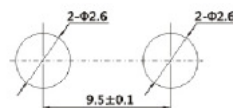
KW4-1
No lever



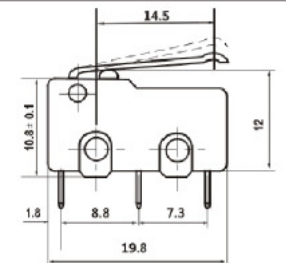
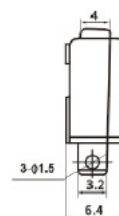
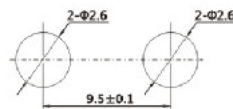
KW4-2
Short lever



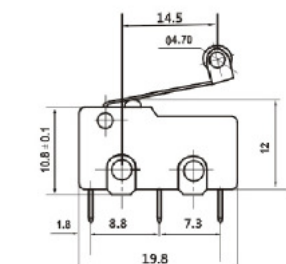
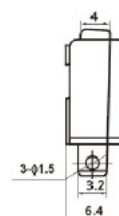
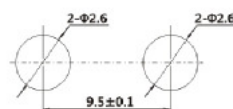
KW4-3
Long lever

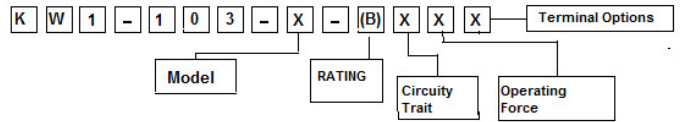


KW4-4
Arc lever



KW4-5
Roller lever





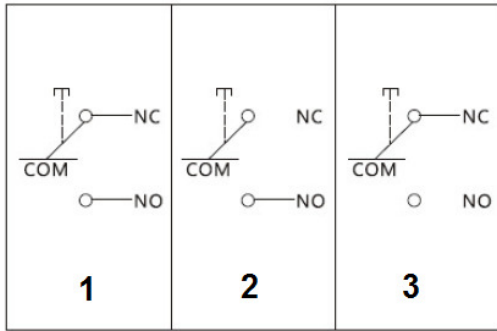
KW1-103 Series

Specification

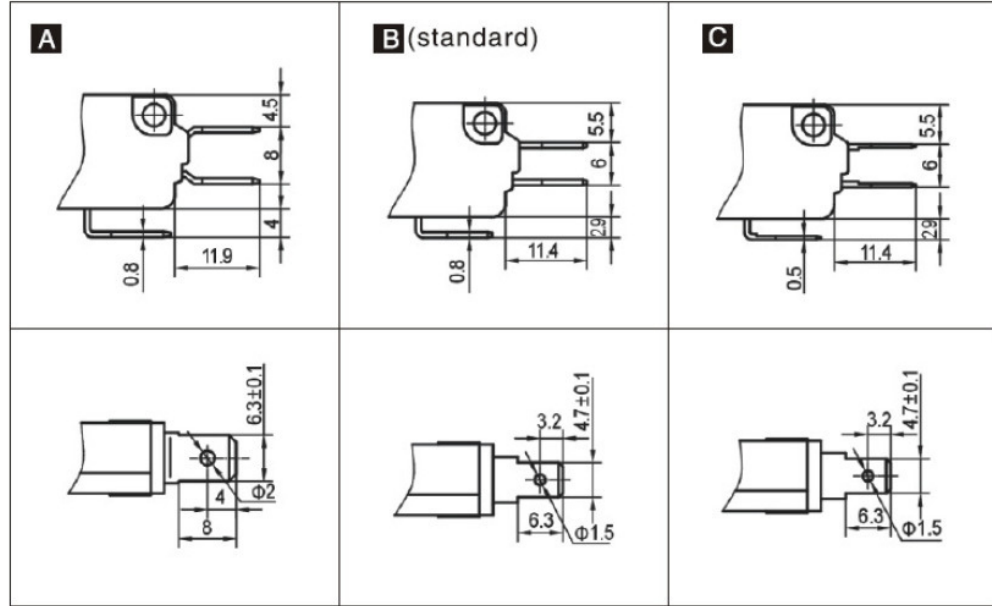
1. Rating:()10A 125/250VAC
(B)16A 125/250VAC
2. Contact Resistance:30m Ω max
3. Insulation Resistance:500VDC 100M Ω min

1. Dielectric strength:1500VAC,1Minute
2. Ambient Temperature:-25°C~ +80°C
3. Electrical Life:100,000 Cycles

Cricuity trait



Terminal options

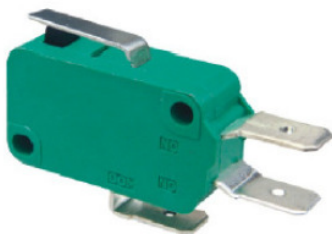
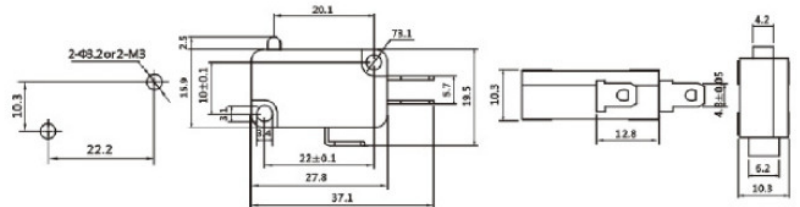


Operating force

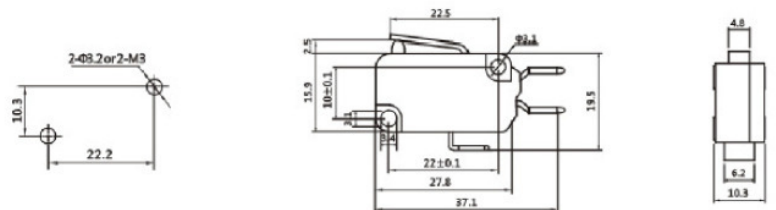
L:50g
S:150g
P : 200g = 100,000 Cycles
H:300g



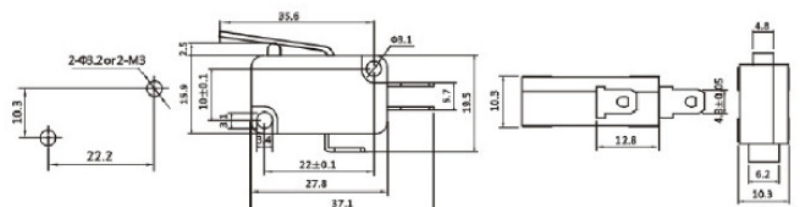
KW1-103-1



KW1-103-2A

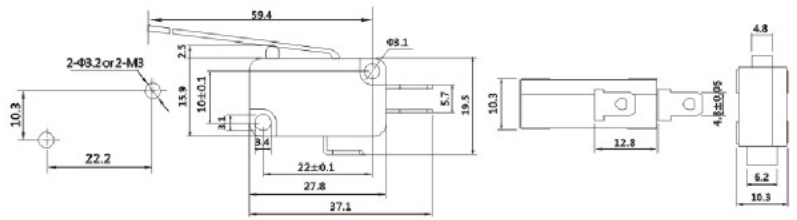


KW1-103-3

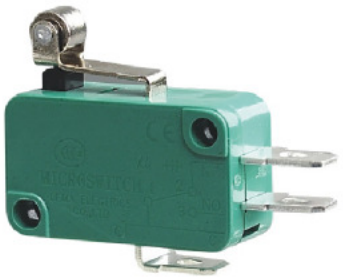
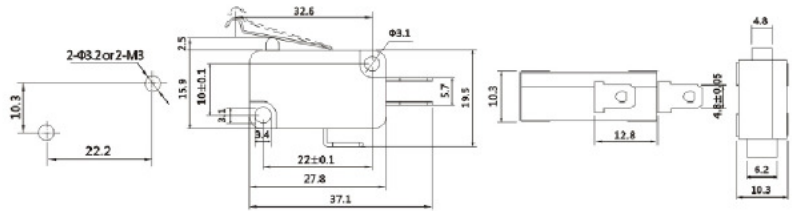




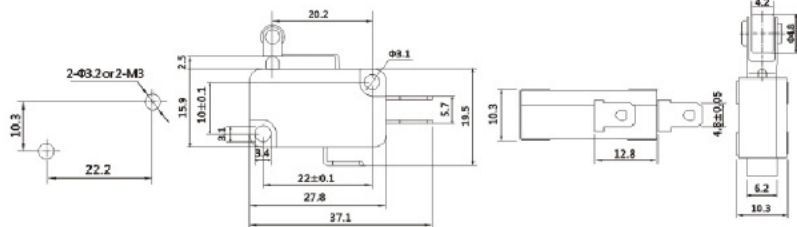
KW1-103-4



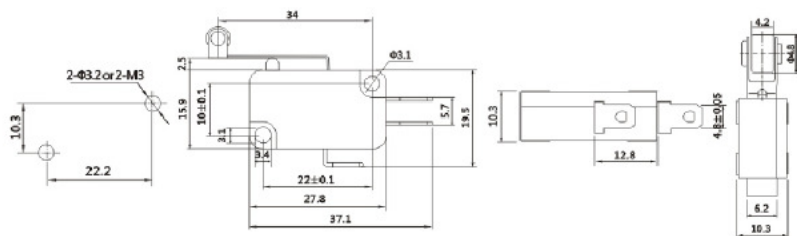
KW1-103-5



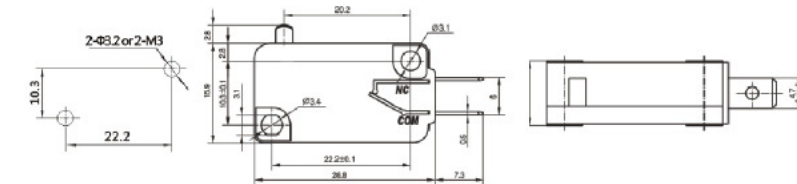
KW1-103-6



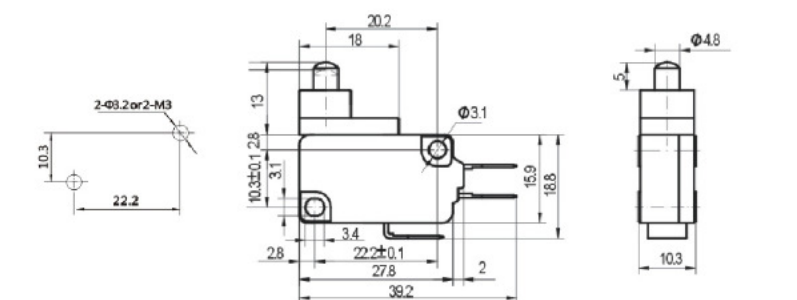
KW1-103-7



KW1-103-8T



KW1-103-9





HS-1 有声



WK3-1
6A 125V; 3A 250VAC



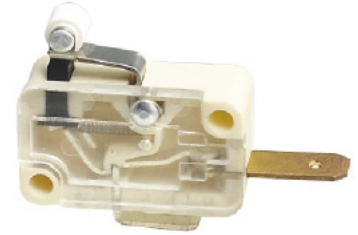
KW1-103-Q
20A 125V; 16A 250VAC



HS-2 无声



WK1-1
6A 125V; 3A 250VAC



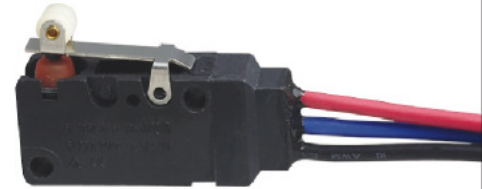
BVM3 ON-(OFF)
15A 125VAC; 10A 250VAC



HS-3 有声



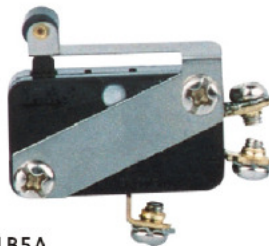
V-15-1B5
15A 250V/AC



WS2
10A 250VAC; 10A 30VDC



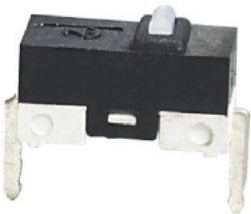
SMKW-01
0.1A 30VDC



V-15-1B5A
15A 250V/AC



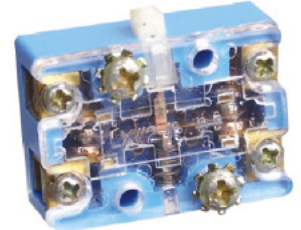
JW2-11
3A 220VAC



MKW-01
0.1A 48VDC; 0.1A 125VAC



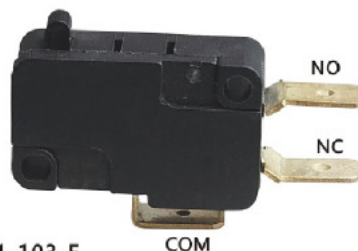
CN-05
5A 125/250VAC



LXW2-11
16A 250VAC



KW4-OZ(KWX)
6A 125VAC; 3A 250VAC



KW1-103-F
16A 250VAC



KW-1038
16A 250VAC



Z-15G-B



Z-15GW22-B



D4MC-1020



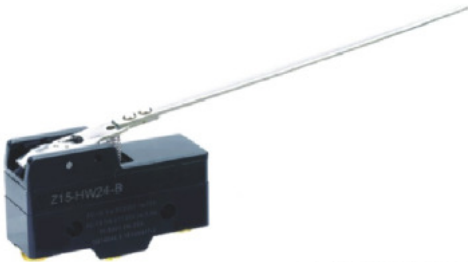
Z-15GW49-B



Z-15GW22-B



D4MC-2000



Z-15HW24-B



Z-15GQ-B



D4MC-2020



Z-15GD-B



Z-15GQ22-B



D4MC-5000



Z-15GW21-B



Z-15GQ21-B



D4MC-5020



Z-15GW-B



D4MC-1000



D4MC-5040