

MICRO SWITCH

Sub-Mini Micro Switch

TOPTTEK®
HARDWARE ELECTRONIC COMPONENTS



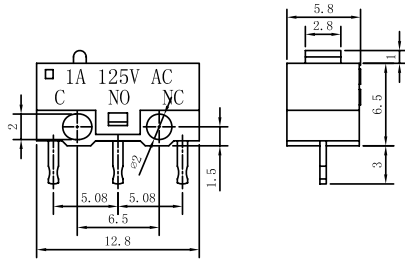
www.toptek-co.com

Specifications

Rating: 3A 125V AC; 1.5A 250V AC Contact | Resistance: 20mΩ Max | Insulation Resistance: 500VDC 1000M Ω min | Dielectric Strength: 1000V AC for one minute | Operation Temperature: -25°C to +85°C | Electrical Life: ≥10,000 Cycles



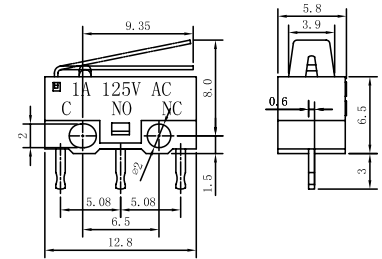
MI-10



MI10-Z0P075
MI10-CZ0P075
MI10-DZ0P075
MI10-EZ0P075

1A 125VAC
3A 250VAC
2A 125VAC
3A 125VAC

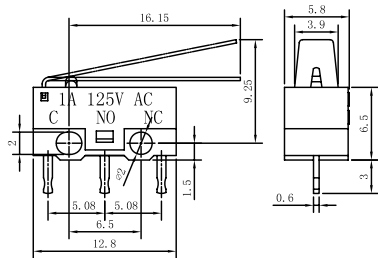
MI-11



MI11-Z1P075
MI11-CZ1P075
MI11-DZ1P075
MI11-EZ1P075

1A 125VAC
3A 250VAC
2A 125VAC
3A 125VAC

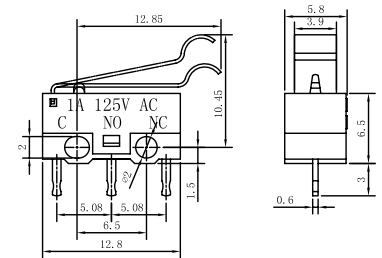
MI-12



MI12-Z2P075
MI12-CZ2P075
MI12-DZ2P075
MI12-EZ2P075

1A 125VAC
3A 250VAC
2A 125VAC
3A 125VAC

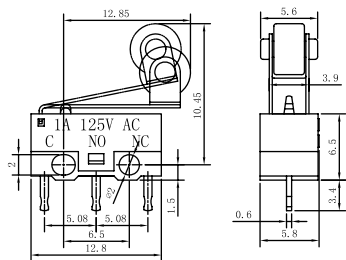
MI-13



MI13-Z3P075
MI13-CZ3P075
MI13-DZ3P075
MI13-EZ3P075

1A 125VAC
3A 250VAC
2A 125VAC
3A 125VAC

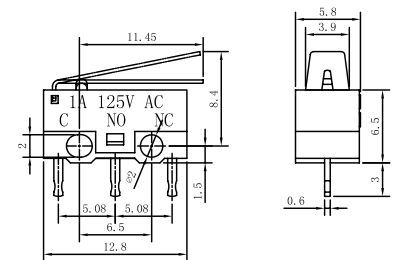
MI-14



MI14-Z4P075
MI14-CZ4P075
MI14-DZ4P075
MI14-EZ4P075

1A 125VAC
3A 250VAC
2A 125VAC
3A 125VAC

MI-15



MI15-Z5P075
MI15-CZ5P075
MI15-DZ5P075
MI15-EZ5P075

1A 125VAC
3A 250VAC
2A 125VAC
3A 125VAC