

# MICRO SWITCH

## Miniature Micro Switch

**TOPTTEK®**  
HARDWARE ELECTRONIC COMPONENTS



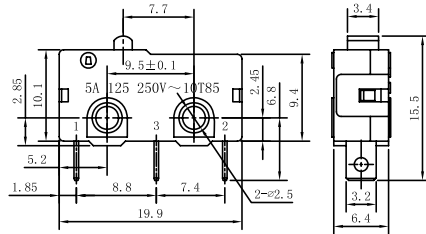
www.toptek-co.com

### Specifications

Rating: 3A 125V AC; 15A 250V AC Contact | Resistance: 20mΩ Max | Insulation Resistance: 500VDC 1000M Ω min | Dielectric Strength: 1000V AC for one minute | Operation Temperature: -25°C to +85°C | Electrical Life: ≥10,000 Cycles

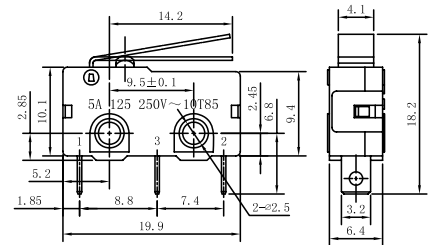


### ME-4



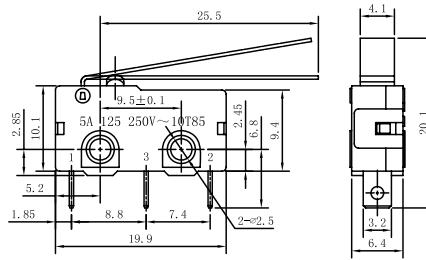
ME4-Z1F100  
ME4-Z1F150  
ME4-Z1F200

### ME-5



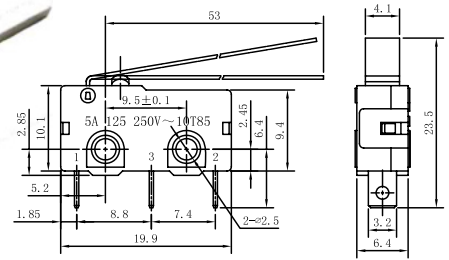
ME5-Z2F100  
ME5-Z2F150  
ME5-Z2F200

### ME-6



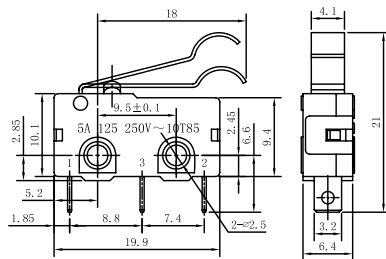
ME6-Z3F100  
ME6-Z3F150  
ME6-Z3F200

### ME-7



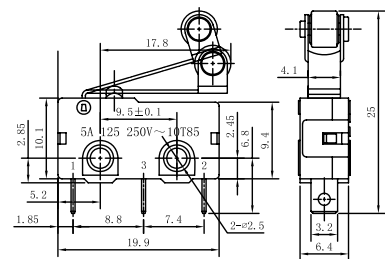
ME7-ZDF100  
ME7-ZDF150  
ME7-ZDF200

### ME-8



ME8-Z4F100  
ME8-Z4F150  
ME8-Z4F200

### ME-9



ME9-Z5F100  
ME9-Z5F150  
ME9-Z5F200