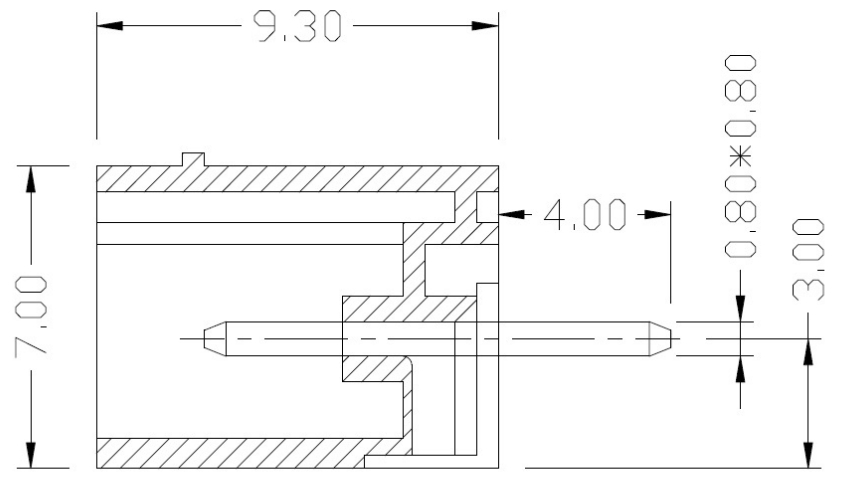
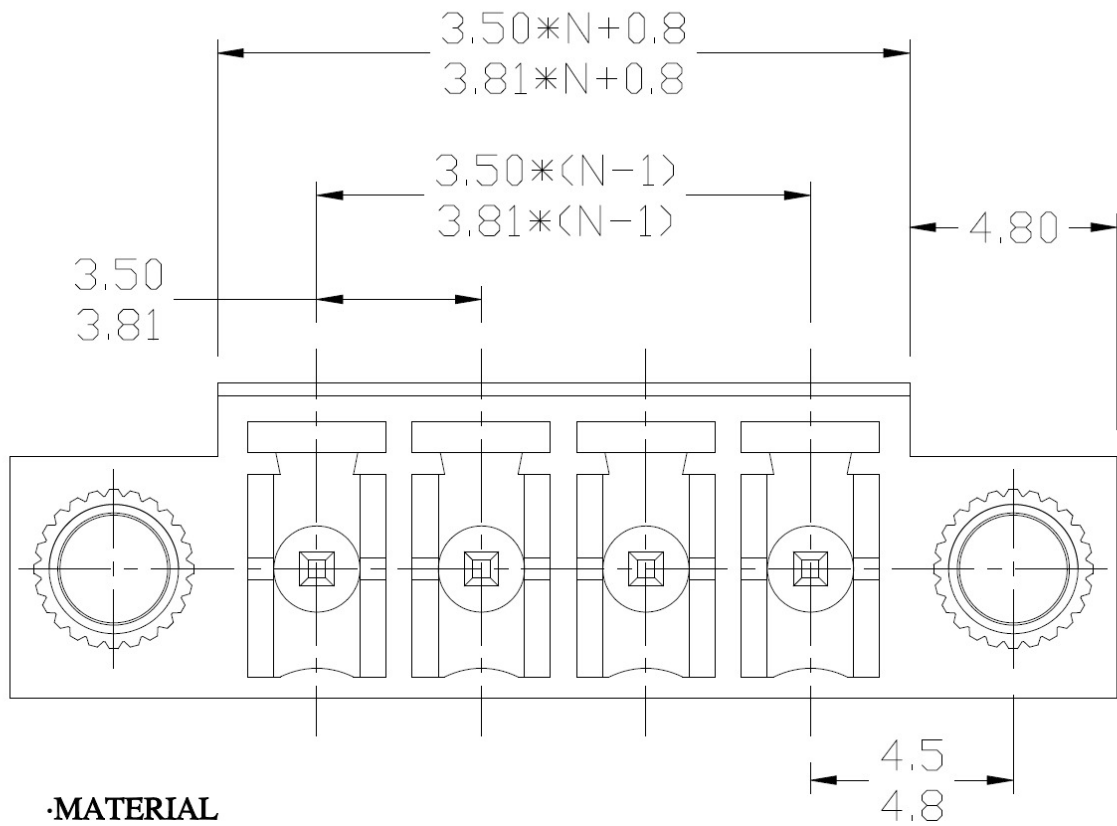


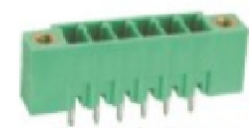
REV.	DESCRIPTION	DRAWN	CHECKED	APPROVED
A				



**·MATERIAL**  
**PIN HEADER : BRASS, TIN PLATED**  
**HOUSING : PA66, UL94V-0**

**·ELECTRICAL**  
**RATED VOLTAGE : 300V**  
**RATED CURRENT : 8A**  
**CONTACT RESISTANCE : 20mΩ**  
**INSULATION RESISTANCE : 5000MΩ/1000V**  
**WITHSTANDING VOLTAGE : AC1500V/1Min**

**·MECHANICAL**  
**TEMP.RANGE : -40℃~+105℃**  
**MAX SOLDREING : +250℃, FOR 5 SEC.**



PRODUCT NUMBER CODE :

**KF222 - 3.50V / 3.81V - XX P**  
 XX = Number of pole

GENERAL TOLERANCE		ANGLE TOLERANCE	
X.	±0.60	X.	±5°
.X	±0.38	.X	±3°
.XX	±0.25	.XX	±2°

DRAWING TYPE	COMPONENTS		
SCALE	1:1	SHEET	1 OF 1
DRAWING NO.			

PROJECTION	TITLE
UNITS	F222-3.50V/3.81V
SHEET SIZE	SERIES F222



**Toptek s.r.l.**  
**www.toptek-co.com**