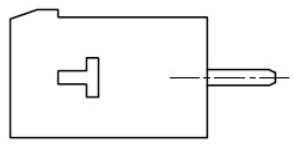
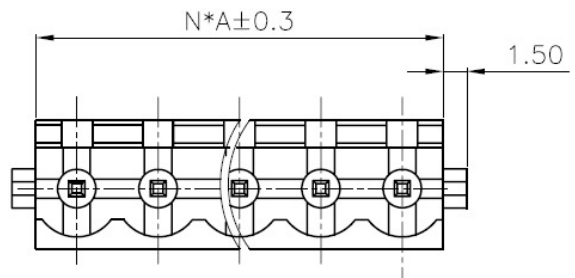
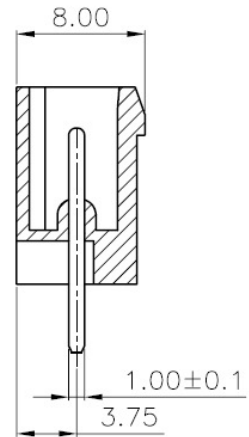
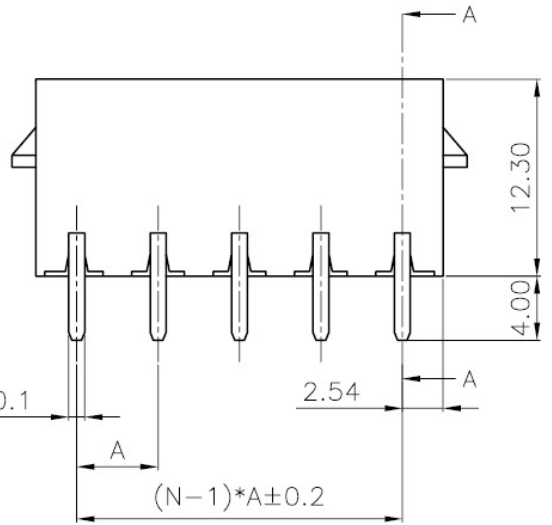


REV.	DESCRIPTION	DRAWN	CHECKED	APPROVED
A	NEW RELEASE	LJH 07/07/07'		

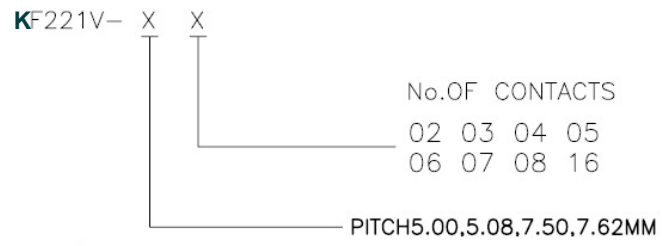


- MATERIAL  
PIN HEADER : BRASS, TIN PLATED  
HOUSING : PA66, UL94V-0
- ELECTRICAL  
RATED VOLTAGE : 300V  
RATED CURRENT : 12A  
CONTACT RESISTANCE : 20mΩ  
INSULATION RESISTANCE : 5000MΩ/1000V  
WITHSTANDING VOLTAGE : AC1500V/1Min
- MECHANICAL  
TEMP.RANGE : -40°C~+105°C  
MAX SOLDERING : +250°C, FOR 5 SEC.



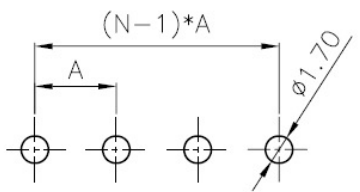
SECTION A-A

PRODUCT NUMBER CODE:



TYPE	Dimension
	A
1	5.00
2	5.08
3	7.50
4	7.62

N:NUMBER OF CONTACTS



RECOMMEND PCB LAYOUT(TOLERANCE=±0.05)

GENERAL TOLERANCE	ANGLE TOLERANCE	PROJECTION		TITLE	PLUG-IN TERMINAL BLOCKS
X. ±0.60	X. ±5°	UNITS	mm		PITCH5.00,5.08,7.50,7.62MM
.X ±0.38	.X ±3°	SHEET SIZE	A4	SERIES	KF221V SERIES
.XX ±0.25	.XX ±2°	 www.toptek-co.com			
DRAWING TYPE	CUSTOMER				
SCALE	1:1 SHEET 1 OF 1				
DRAWING NO.	F221V-XXXXX				