



Specifications :

300V 10A 18-14AWG

Poles: 3P

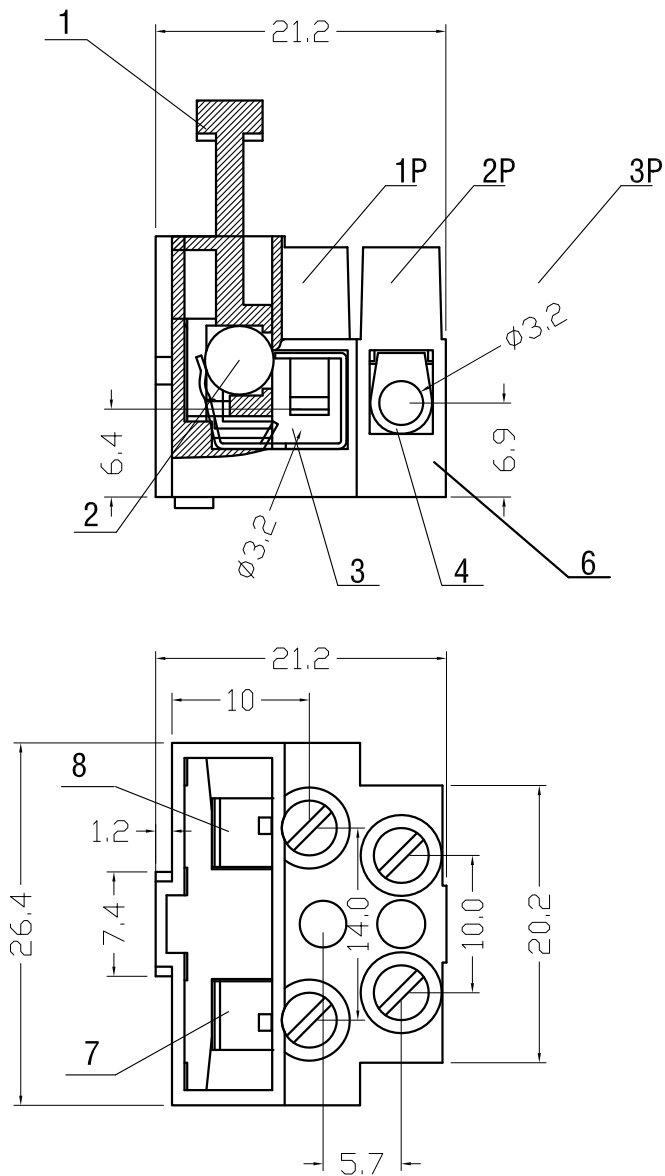
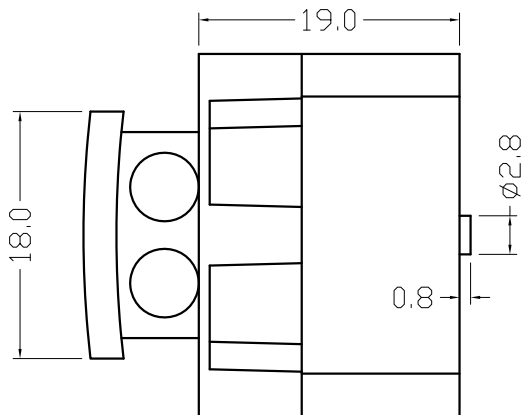
Pitch: 10mm(.394")

Materials:

Housing: PA66 (UL94-0)



Terminal Block: Brass,Nickel plated

Screw: M3,Steel(A3),Nickel plated



RevNo.	Title	
1	Safety tube seat	
2	fuse tube	
3	Copper block	
4	Copper pillar-1	
5		
6	Housing	
7	right Shrapnel	
8	left Shrapnel	
9	Screw	



Designed by	Drawing by	Checked by	Approved by		General Tolerance		
					x. ± 0,2	x." ± 2"	
<div>  www.toptek-co.com</div> <div>www.toptek-co.com</div>		File name	File No.		x. ± 0,1	x." ± 1"	
		KF100-2P				.xx ± 0,05	.xx" ± 0,5"
				Sheet		.xxx ± 0,01	
		Remark					mm