

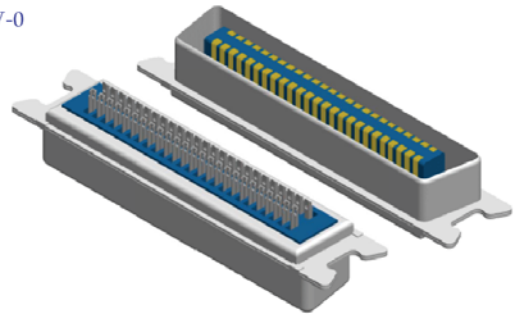
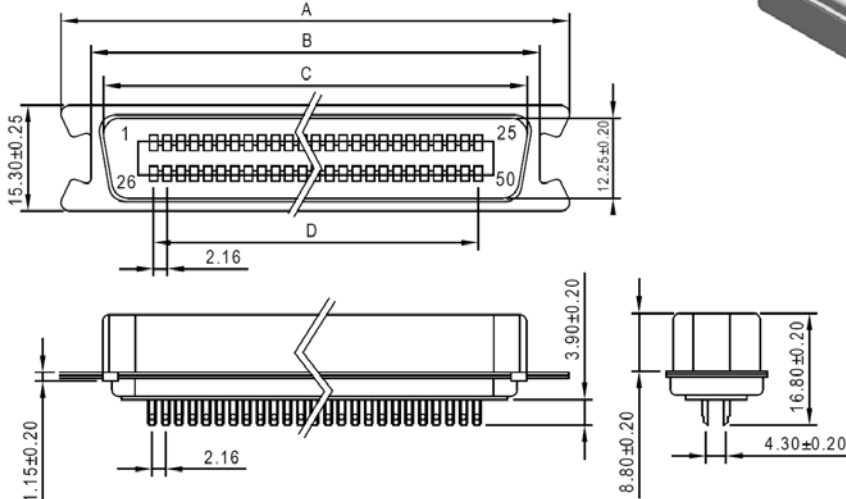
Centronic Solder Type

SPECIFICATION

Current Rate:1 AMP
 Insulation Resistance:1000MΩ Min.
 Contact Resistance:30mΩ Max.
 Dielectric Voltage:500V AC for one minute
 Operation Temperature:-55°C to +105°C

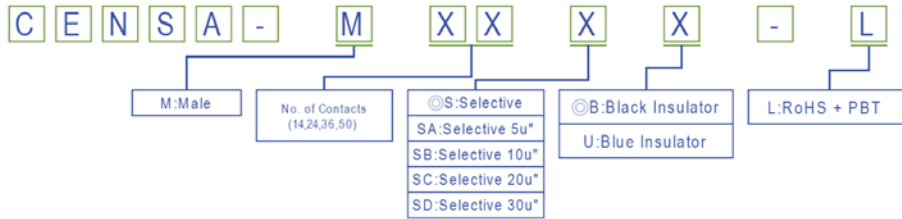
MATERIAL

Insulator:Polyester,UL 94V-0
 ◎Standard:PBT
 Contact Pin:Copper Alloy



| Part No. | A±0.20 | B±0.20 | C±0.20 | D±0.20 |
|-----------|--------|--------|--------|--------|
| CENSA-M14 | 38.80 | 30.20 | 25.60 | 12.96 |
| CENSA-M24 | 49.30 | 40.20 | 36.47 | 23.76 |
| CENSA-M36 | 62.00 | 53.50 | 49.35 | 36.72 |
| CENSA-M50 | 77.40 | 68.30 | 64.47 | 51.84 |

Order Information



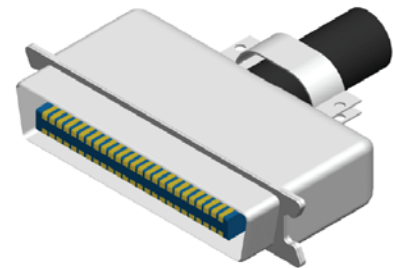
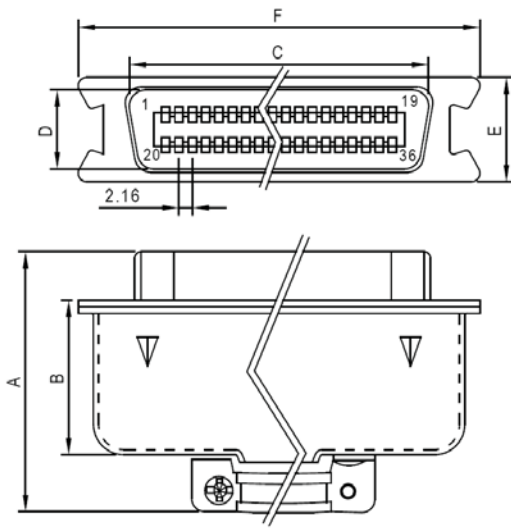
Centronic Solder Assembly Type

SPECIFICATION

Current Rate:1 AMP
 Insulation Resistance:1000MΩ Min.
 Contact Resistance:30mΩ Max.
 Dielectric Voltage:500V AC for one minute
 Operation Temperature:-55°C to +105°C

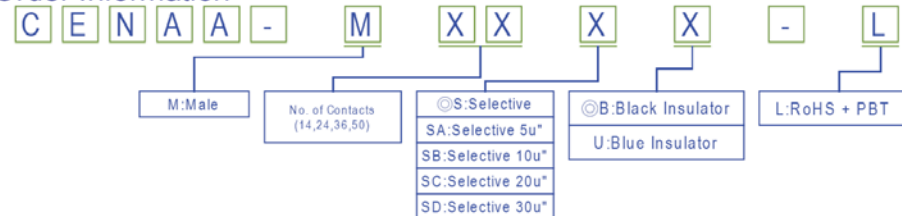
MATERIAL

Insulator:Polyester,UL 94V-0
 ◎Standard:PBT
 Contact Pin:Copper Alloy



| Part No. | A±0.20 | B±0.20 | C±0.20 | D±0.20 | E±0.20 | F±0.20 |
|-----------|--------|--------|--------|--------|--------|--------|
| CENAA-M14 | 41.40 | 21.20 | 25.60 | 12.25 | 15.20 | 38.80 |
| CENAA-M24 | 41.40 | 21.20 | 36.47 | 12.25 | 15.20 | 49.30 |
| CENAA-M36 | 40.50 | 22.60 | 49.35 | 12.25 | 15.20 | 62.00 |
| CENAA-M50 | 45.50 | 24.80 | 77.40 | 12.25 | 15.20 | 77.40 |

Order Information



Centronic Conn. Series



RoHS