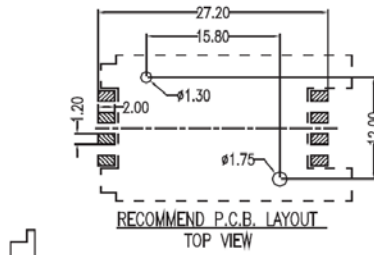
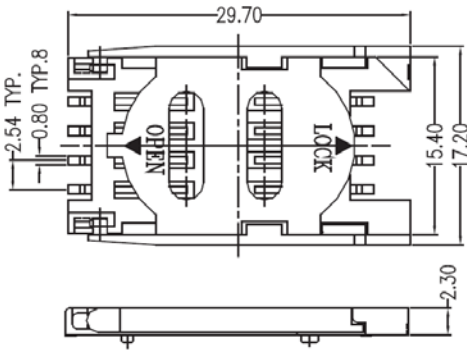


CONNECTORS MANUFACTURER

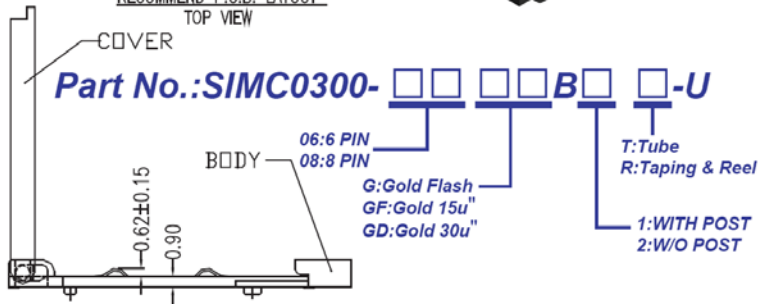
SIM / Mini SD / Micro Card Conn. Series

MATERIAL

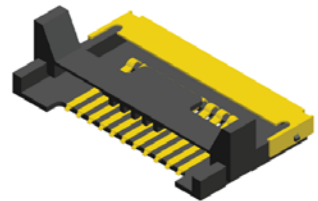
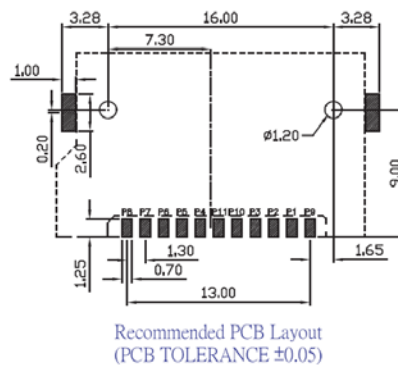
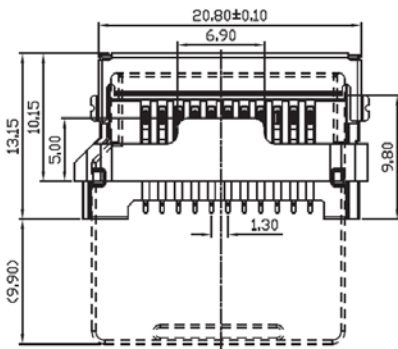
Insulator Material: LCP On Cover, PPS On Body
 Contact Material: Copper Alloy
 Finish: Gold Flash, 15u", 30u"



Part No.: SIMC0300- B -U



06:6 PIN
 08:8 PIN
 T: Tube
 R: Taping & Reel
 G: Gold Flash
 GF: Gold 15u"
 GD: Gold 30u"
 1: WITH POST
 2: W/O POST



MATERIAL
 Insulator Material: LCP, UL 94V-0
 Contact Material: Copper Alloy
 Finish: Gold Plated 10u"

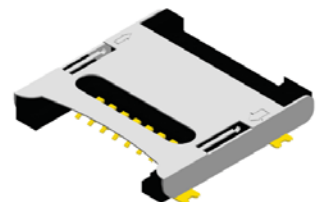
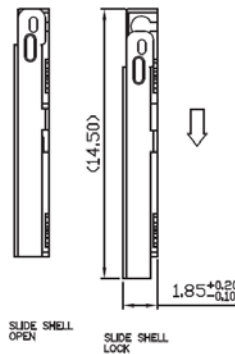
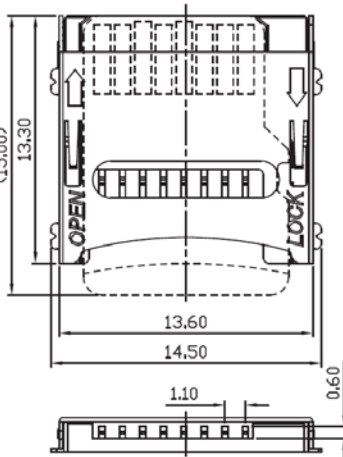
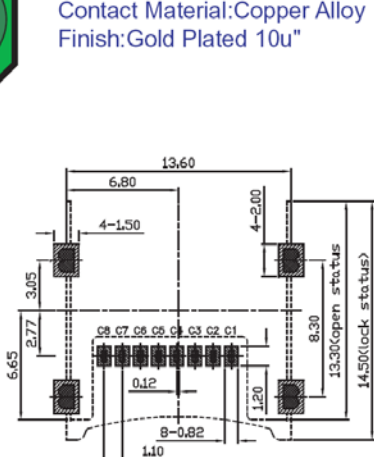
MINI SD CARD

Part No.: MSDC0201- 11GBB-U

22: Plastic Height H=2.2mm
 24: Plastic Height H=2.4mm

MATERIAL

Insulator Material: LCP, UL 94V-0
 Contact Material: Copper Alloy
 Finish: Gold Plated 10u"



MICRO SD CARD (T-Flash)

Part No.: TSDC0201-08GBB-U

SIM Card Conn. Series



ROHS