

Modular Jack Shielded Side Entry H=13.4 W=18.5

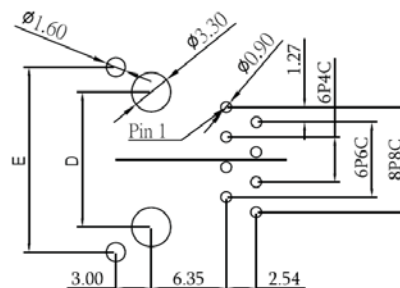
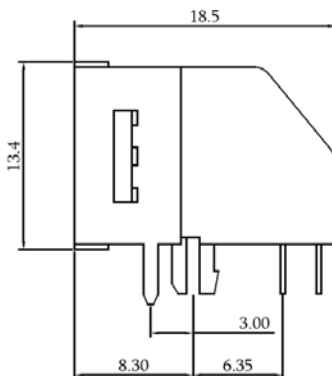
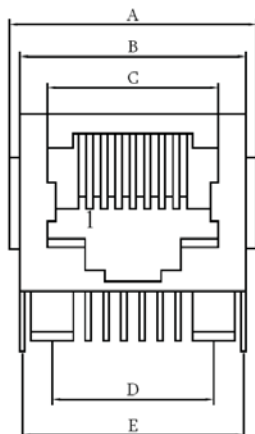
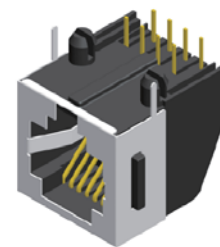
Material & Finish:

Housing: Glass Fiber, PBT. UL94V-0

Contact: 0.45x0.35 mm Thickness Phosphor Bronze,

Gold Plating Over Nickel on Contact Area,

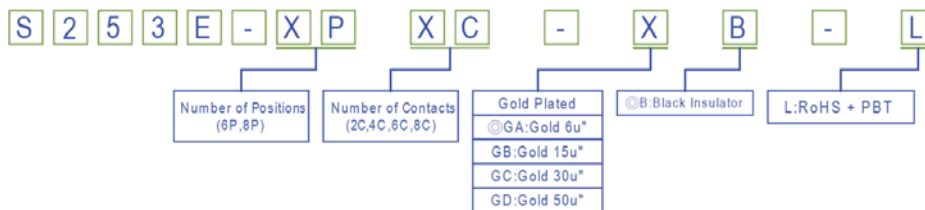
Tin Plating Over Nickel on Solder Area.



Recommended PCB Layout
(PCB TOLERANCE ± 0.05)

Positions	Contacts	A	B	C	D	E
6P	2C/4C/6C	15.75	13.90	9.90	10.16	13.70
8P	8C	17.75	16.00	11.93	11.43	15.65

Order Information



Modular Jack Shielded Side Entry SMT Type H=13.6 W=18.5

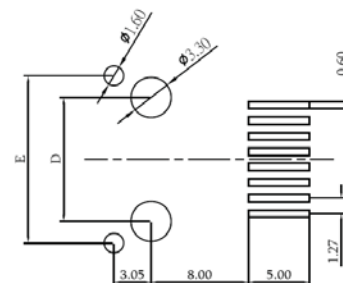
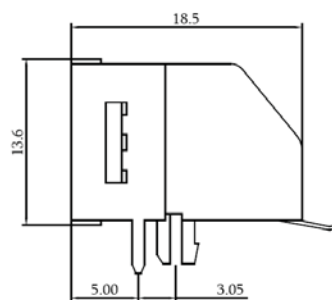
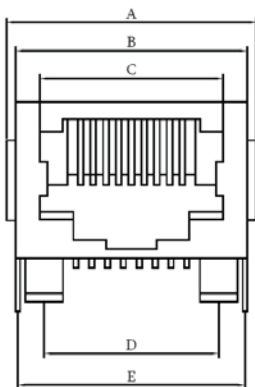
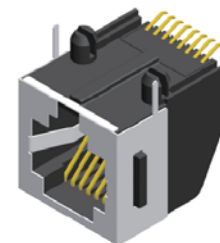
Material & Finish:

Housing: Glass Fiber, Nylon 6T. UL94V-0

Contact: 0.35 mm Thickness Phosphor Bronze,

Gold Plating Over Nickel on Contact Area,

Tin Plating Over Nickel on Solder Area.



Recommended PCB Layout
(PCB TOLERANCE ± 0.05)

Positions	Contacts	A	B	C	D	E
6P	2C/4C/6C	15.75	13.90	9.90	10.16	13.70
8P	8C	17.75	16.00	11.93	11.43	15.65

Order Information

