

CONNECTOR MANUFACTURERS

TOPTEK®
CONNECTOR MANUFACTURERS



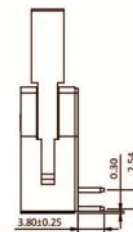
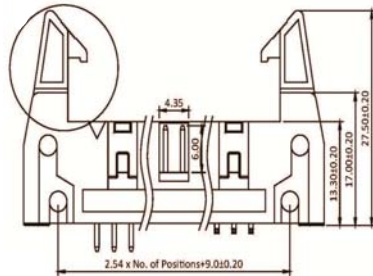
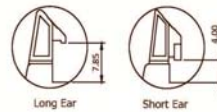
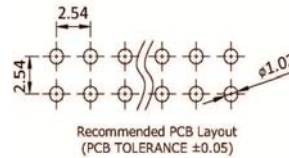
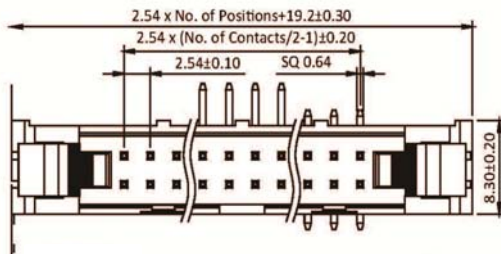
Ejector Header 2.54mm Right Angle Type

Specifications

Current Rate: 3 AMP
 Insulation Resistance: 1000MΩ Min.
 Contact Resistance: 20mΩ Max.
 Dielectric Voltage: 1000V AC for one minute
 Operation Temperature: -40°C to +105°C

Material

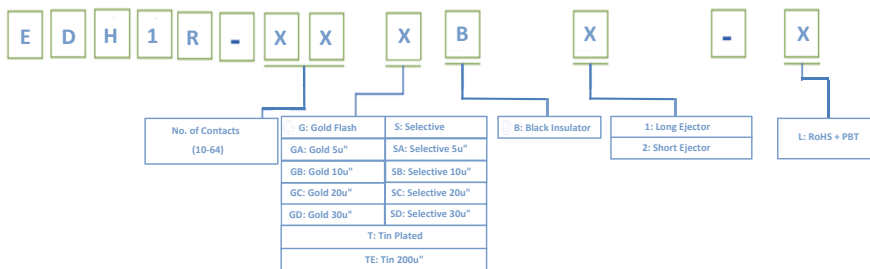
Insulator: Polyester, UL 94V-0
 © Standard: PBT or Nylon 6T
 Terminal: Copper Alloy
 Plating: Gold Plated



Ejector Header 2.54 mm

ORDER INFORMATION

Part No.: EDH1R-XX-L



©: Standard Recommend



ROHS