

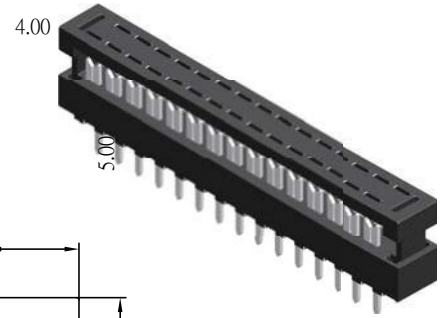
Dip Plug 2.0mm

Specifications

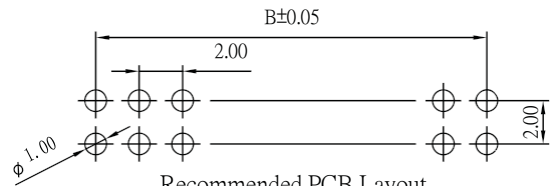
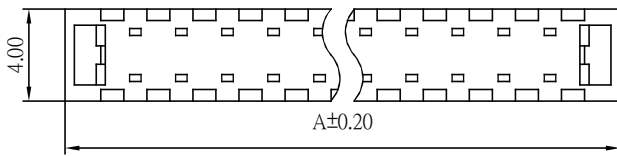
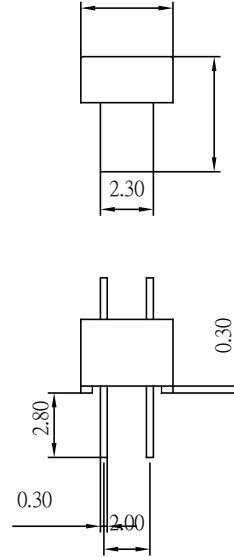
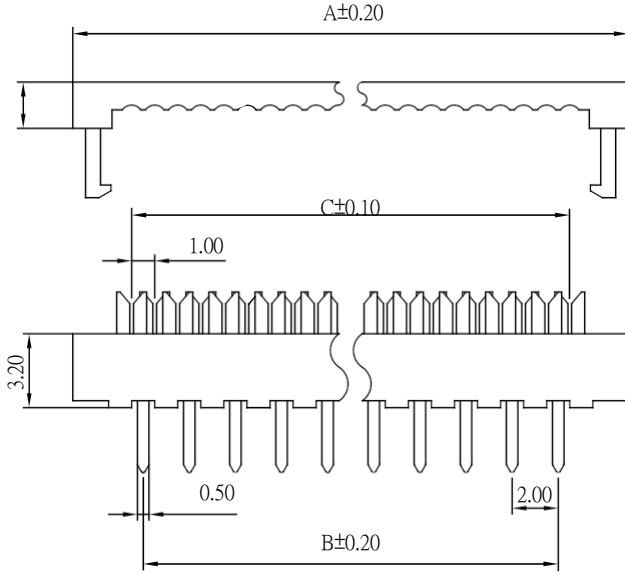
Current Rate: 1 AMP
 Insulation Resistance: 1000MΩ Min
 Contact Resistance: 30mΩ Max
 Dielectric Voltage: 500V AC for one minute
 Operation Temperature: -55°C to +105°C

Material

Insulator: Polyester, UL 94V-0
 Standard: PBT
 Terminal: Copper Alloy
 Plating: Tin Plated



DIP Plug



☉ Mate with flat cable Pitch 1.0 mm

Recommended PCB Layout
(PCB TOLERANCE ±0.05)

No. of Contacts	Dim. A	Dim. B	Dim. C	No. of Contacts	Dim. A	Dim. B	Dim. C
8	12.10	6.00	7.00	36	40.10	34.00	35.00
10	14.10	8.00	9.00	38	42.10	36.00	37.00
12	16.10	10.00	11.00	40	44.10	38.00	39.00
14	18.10	12.00	13.00	42	46.10	40.00	41.00
16	20.10	14.00	15.00	44	48.10	42.00	43.00
18	22.10	16.00	17.00	46	50.10	44.00	45.00
20	24.10	18.00	19.00	48	52.10	46.00	47.00
22	26.10	20.00	21.00	50	54.10	48.00	49.00
24	28.10	22.00	23.00	52	56.10	50.00	51.00
26	30.10	24.00	25.00	54	58.10	52.00	53.00
28	32.10	26.00	27.00	56	60.10	54.00	55.00
30	34.10	28.00	29.00	58	62.10	56.00	57.00
32	36.10	30.00	31.00	60	64.10	58.00	59.00
34	38.10	32.00	33.00				

Part No.: DP2-XX-L

