

# CONNECTOR MANUFACTURERS



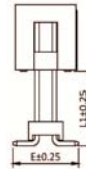
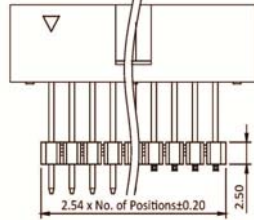
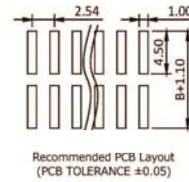
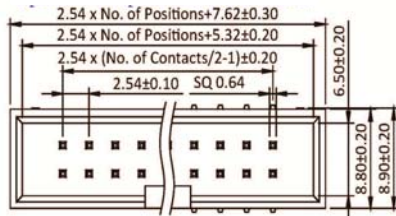
## Box Header 2.54mm Elevated SMT Type

### Specifications

Current Rate: 3 AMP  
 Insulation Resistance: 1000MΩ Min.  
 Contact Resistance: 20mΩ Max.  
 Dielectric Voltage: 1000V AC for one minute  
 Operation Temperature: -40°C to +105°C

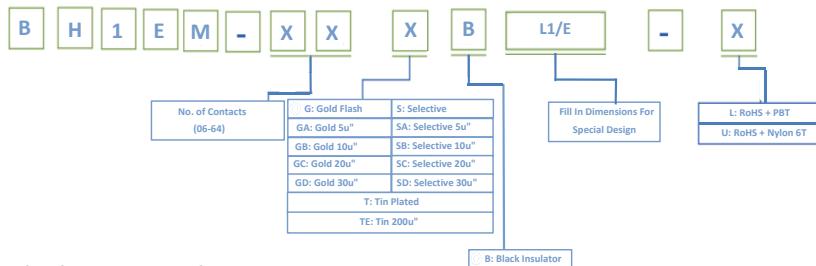
### Material

Insulator: Polyester, UL 94V-0  
 © Standard: PBT or Nylon 6T  
 Terminal: Copper Alloy  
 Plating: Gold Plated



Part No.: BH1EM-XX-L/U

## ORDER INFORMATION



Box Header 2.54 mm



ROHS