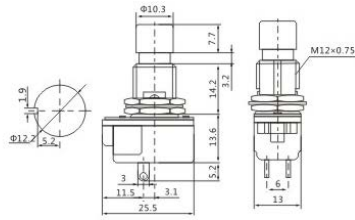
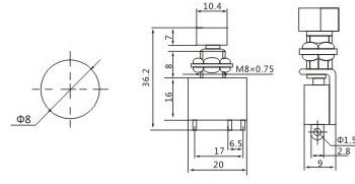


T-TOP-24B-2/24C-2



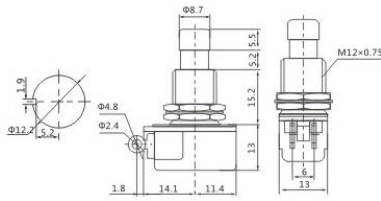
T-TOP-24B-2 OFF-(ON)
T-TOP-24C-2 ON-(OFF)
6A 250VAC; 10A 125VDC

T-TOP-428



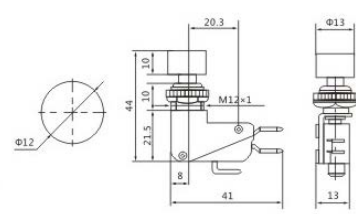
T-TOP-428 ON-(ON)
5A 250VAC

T-TOP-24B-4



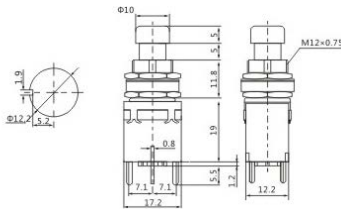
T-TOP-24B-4 OFF-(ON)
2A 250VAC

T-TOP-438



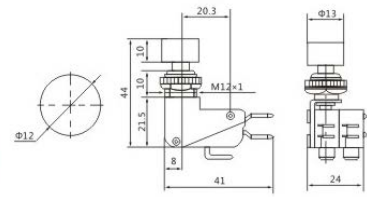
T-TOP-438 ON-(ON)
16A 250VAC

T-TOP-24-102P/112P/202P/212P



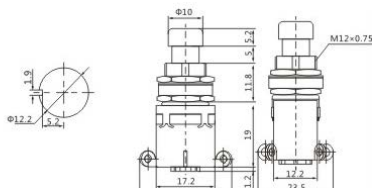
T-TOP-24-102P ON-ON 3P
T-TOP-24-112P ON-(ON) 3P
T-TOP-24-202P ON-ON 6P
T-TOP-24-212P ON-(ON) 6P

T-TOP-448



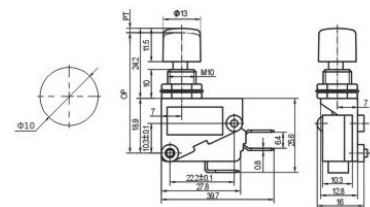
T-TOP-448 ON-(ON)
16A 250VAC

T-TOP-24-102/112/202/212



T-TOP-24-102 ON-ON 3P
T-TOP-24-112 ON-(ON) 3P
T-TOP-24-202 ON-ON 6P
T-TOP-24-212 ON-(ON) 6P

T-TOP-438-2



T-TOP-438-2 ON-(ON)
16A 250VAC

