

# Toggle Switch

**TOPTEK®**

HARDWARE ELECTRONIC MANUFACTURER



[www.toptek-co.com](http://www.toptek-co.com)

TOPTEK srl  
10015 - IVREA (TO) - ITALY  
tel. +39 0125 251 211 - fax +39 0341 367 607  
[info@toptek-co.com](mailto:info@toptek-co.com)

# Toggle Switch



RoHS

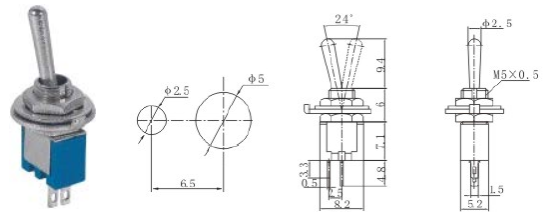
Rating: 3A 125VAC ; 1.5A 250VAC Contact  
Resistance: 20m Ω max  
Insulation Resistance: 500VDC 1000M Ω min

Dielectric Strength: 1000VAC, 1 Minute  
Operating Temperature: -25°C~ +85°C  
Electrical Life: ≥ 10,000 Cycles

TOPTTEK®  
HARDWARE ELECTRONIC MANUFACTURER

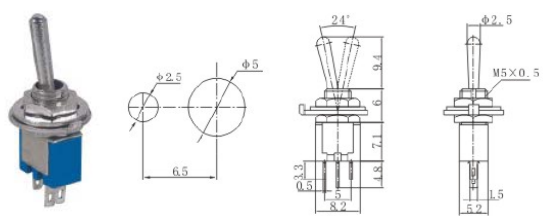
www.toptek-co.com

## BTS-101



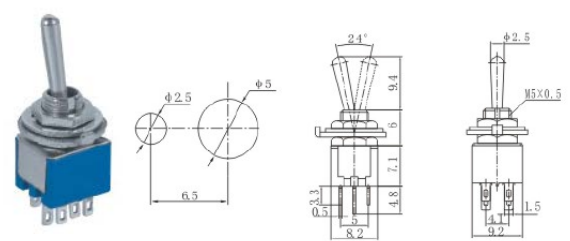
BTS-101 ON-OFF  
SPST 2P

## BTS-102



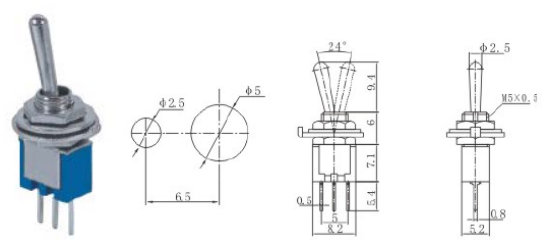
BTS-102 ON-ON  
SPDT 3P

## BTS-202



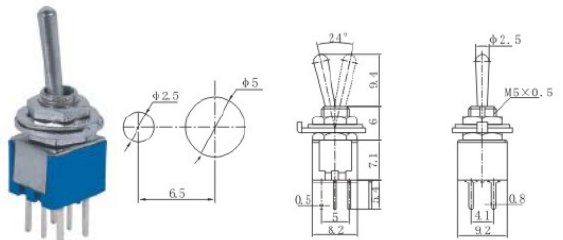
BTS-202 ON-ON  
DPDT 6P

## BTS-102-A2



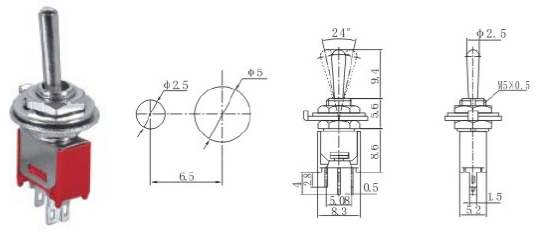
BTS-102-A2 ON-ON  
SPDT 3P

## BTS-202-A2



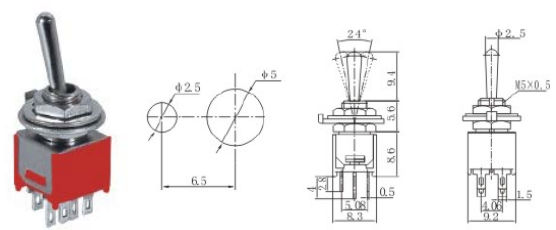
BTS-202-A2 ON-ON  
DPDT 6P

## BTS-103-2A1



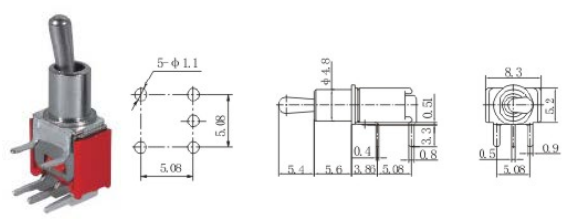
BTS-103-2A1 ON-OFF-ON  
SPDT 3P

## BTS-203-2A2



BTS-203-2A2 ON-OFF-ON  
DPDT 6P

## BTS-102-103-2C3



BTS-102-2C3 ON-ON  
BTS-103-2C3 ON-OFF-ON  
SPDT 3P

14  
\*  
25



# CONNECTOR MANUFACTURERS

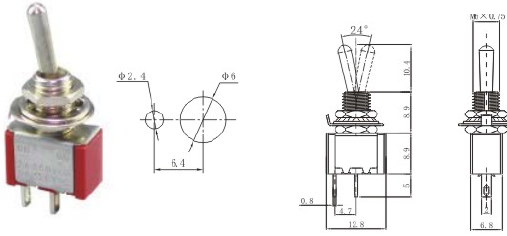
Rating: 6A 125VAC ; 3A 250VAC Contact  
Resistance: 20m  $\Omega$  max  
Insulation Resistance: 500VDC 1000M  $\Omega$  min

Dielectric Strength: 1500VAC, 1 Minute  
Operating Temperature: -25°C~+85°C  
Electrical Life:  $\geq$  10,000 Cycles

**TOPTek**<sup>®</sup>  
HARDWARE ELECTRONIC MANUFACTURER

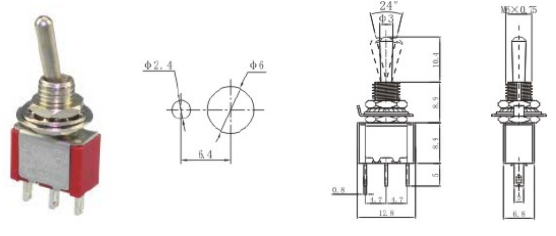
www.toptek-co.com

## TP-101-111



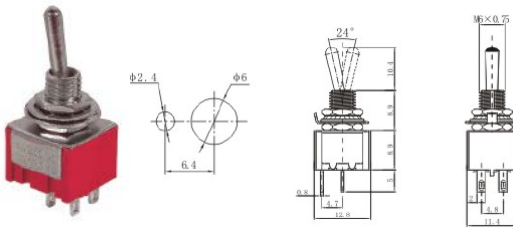
TP-101 ON-OFF  
TP-111 OFF-(ON)  
SPST 2P

## TP-102-103-112-113-123



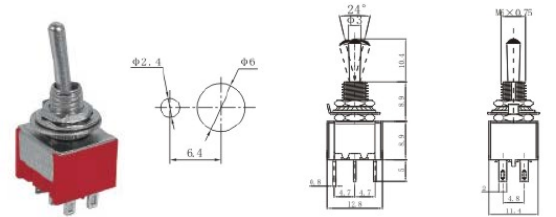
TP-102 ON-ON  
TP-103 ON-OFF-ON  
TP-112 ON-(ON)  
TP-113 ON-OFF-(ON)  
TP-123 (ON)-OFF-(ON)  
SPDT 3P

## TP-201-211



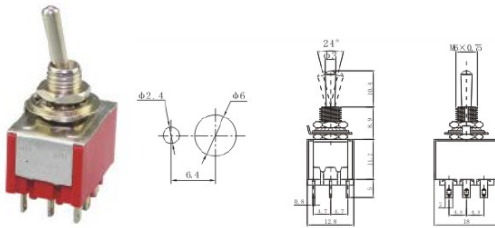
TP-201 ON-OFF  
TP-211 OFF-(ON)  
DPST 4P

## TP-202-203-2033-212-213-223



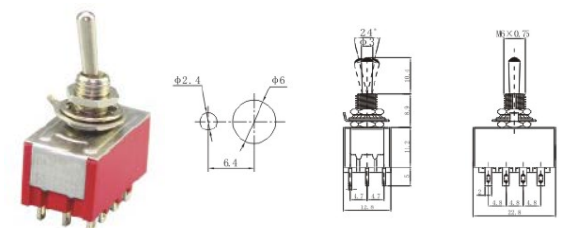
TP-202 ON-ON  
TP-203 ON-OFF-ON  
TP-2033 ON-(ON)  
TP-212 ON-(ON)  
TP-213 ON-OFF-(ON)  
TP-223 (ON)-OFF-(ON)  
DPDT 6P

## TP-302-303



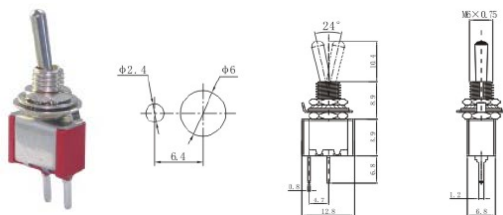
TP-302 ON-ON  
TP-303 ON-OFF-ON  
3PDT 9P

## TP-402-403



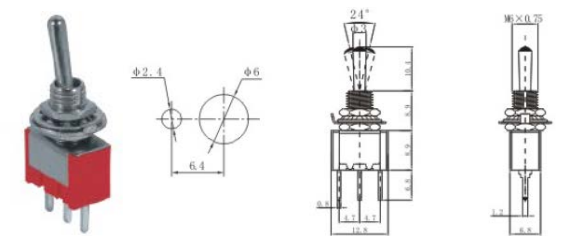
TP-402 ON-ON  
TP-403 ON-OFF-ON  
4PDT 12P

## TP-101-111-A2



TP-101-A2 ON-OFF  
TP-111-A2 OFF-(ON)  
SPST 2P

## TP-102-103-112-113-123-A2



TP-102-A2 ON-ON  
TP-103-A2 ON-OFF-ON  
TP-112-A2 ON-(ON)  
TP-113-A2 ON-OFF-(ON)  
TP-123-A2 (ON)-OFF-(ON)  
SPDT 3P

# Toggle Switch



Rating: 6A 125VAC ; 3A 250VAC Contact  
Resistance: 20m Ω max  
Insulation Resistance: 500VDC 1000M Ω min

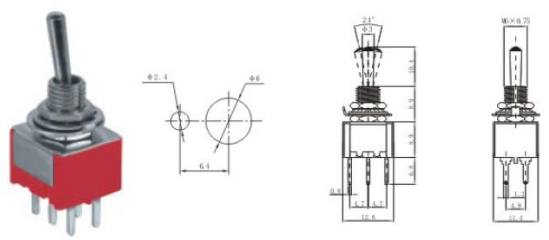
Dielectric Strength: 1500VAC, 1 Minute  
Operating Temperature: -25°C~ +85°C  
Electrical Life: ≥ 10,000 Cycles

**TOPTek**  
HARDWARE ELECTRONIC MANUFACTURER

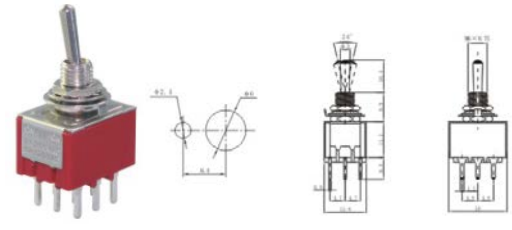
www.toptek-co.com

## TP-202-212-203-213-223-A2

## TP-302-303-A2



TP-202-A2 ON-ON  
TP-212-A2 ON-(ON)  
TP-203-A2 ON-OFF-ON  
TP-213-A2 ON-OFF-(ON)  
TP-223-A2 (ON)-OFF-(ON)  
DPDT 6P

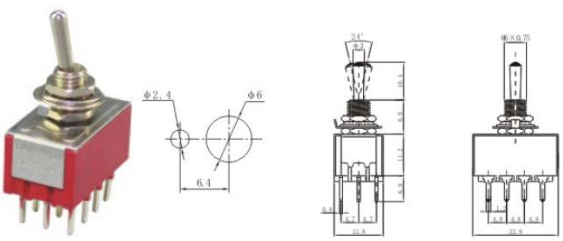


TP-302-A2 ON-ON  
TP-303-A2 ON-(ON)  
3PDT 9P

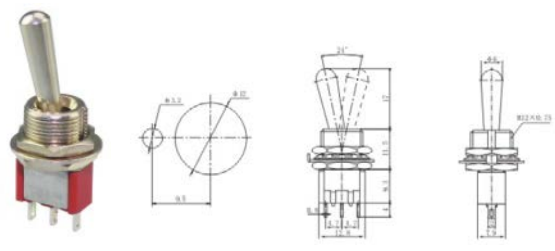
14  
\*  
27

## TP-402-403-A2

## TP-102-103-L1



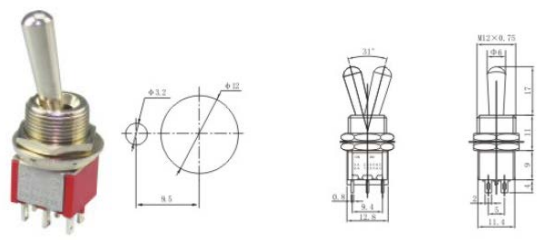
TP-402-A2 ON-ON  
TP-403-A2 ON-OFF-ON  
4PDT 12P



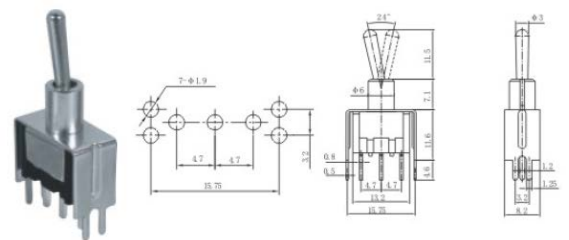
TP-102-L1 ON-ON  
TP-103-L1 ON-OFF-ON  
SPDT 3P

## TP-202-203-L1

## TP-102-112-103-113-123-A2T



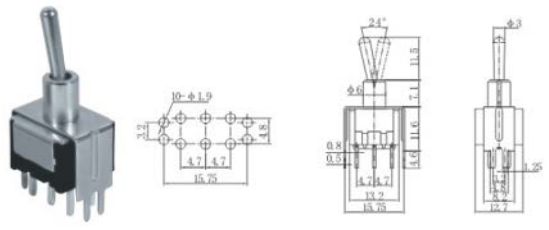
TP-202-L1 ON-ON  
TP-203-L1 ON-OFF-ON  
DPDT 6P



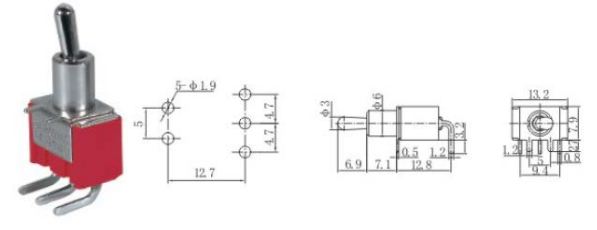
TP-102-A2T ON-ON  
TP-112-A2T ON-(ON)  
TP-103-A2T ON-OFF-ON  
TP-113-A2T ON-OFF-(ON)  
TP-123-A2T (ON)-OFF-(ON)  
SPDT 3P

## TP-202-212-203-213-223-A2T

## TP-102-112-103-113-123-C3



TP-202-A2T ON-ON  
TP-212-A2T ON-(ON)  
TP-203-A2T ON-OFF-ON  
TP-213-A2T ON-OFF-(ON)  
TP-223-A2T (ON)-OFF-(ON)  
DPDT 6P



TP-102-C3 ON-ON  
TP-112-C3 ON-(ON)  
TP-103-C3 ON-OFF-ON  
TP-113-C3 ON-OFF-(ON)  
TP-123-C3 (ON)-OFF-(ON)  
SPDT 3P







# Toggle Switch



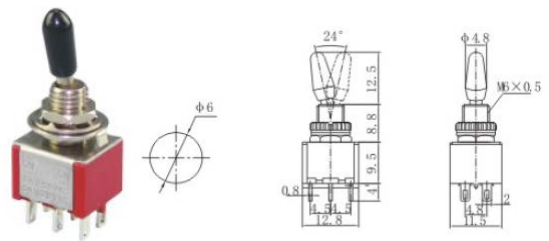
Rating: 6A 125VAC ; 3A 250VAC Contact  
Resistance: 20m Ω max  
Insulation Resistance: 500VDC 1000M Ω min

Dielectric Strength: 1500VAC, 1 Minute  
Operating Temperature: -25°C~ +85°C  
Electrical Life: ≥ 10,000 Cycles

**TOPTek**  
HARDWARE ELECTRONIC MANUFACTURER

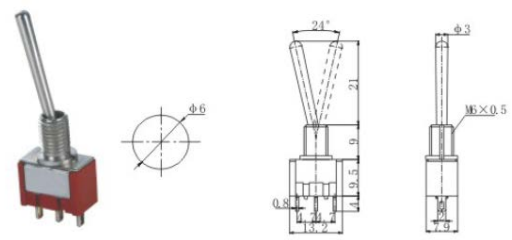
www.toptek-co.com

## TP-2-203-D1



TP-2-D1 ON-ON  
TP-203-D1 ON-OFF-ON  
DPDT 6P

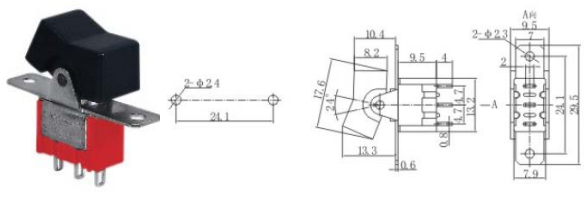
## TP-102-112-B1



TP-102-B1 ON-ON  
TP-112-B1 ON-(ON)  
SPDT 3P

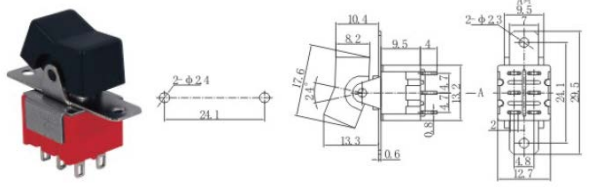
14  
\*  
29

## TPA-102-112-103-113-123-A1



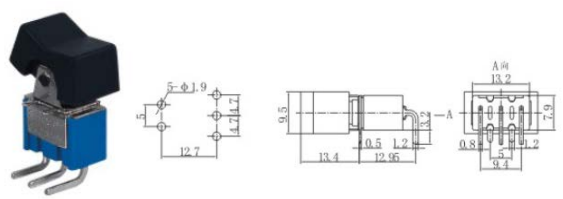
TPA-102-A1 ON-ON  
TPA-112-A1 ON-(ON)  
TPA-103-A1 ON-OFF-ON  
TPA-113-A1 ON-OFF-(ON)  
TPA-123-A1 (ON)-OFF-(ON)  
SPDT 3P

## TPA-202-212-203-213-223-A1



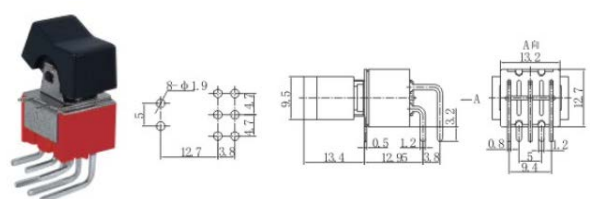
TPA-202-A1 ON-ON  
TPA-212-A1 ON-(ON)  
TPA-203-A1 ON-OFF-ON  
TPA-213-A1 ON-OFF-(ON)  
TPA-223-A1 (ON)-OFF-(ON)  
DPDT 6P

## TPA-102-112-103-113-123-A3



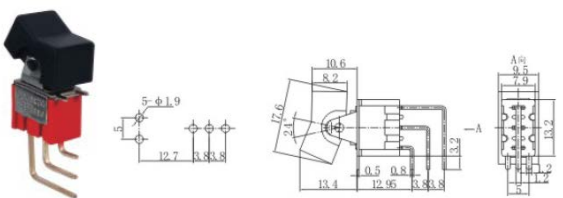
TPA-102-A3 ON-ON  
TPA-112-A3 ON-(ON)  
TPA-103-A3 ON-OFF-ON  
TPA-113-A3 ON-OFF-(ON)  
TPA-123-A3 (ON)-OFF-(ON)  
SPDT 3P

## TPA-202-212-203-213-223-A3



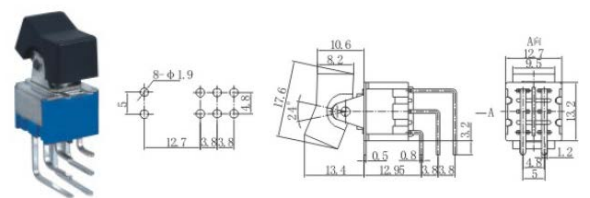
TPA-202-A3 ON-ON  
TPA-212-A3 ON-(ON)  
TPA-203-A3 ON-OFF-ON  
TPA-213-A3 ON-OFF-(ON)  
TPA-223-A3 (ON)-OFF-(ON)  
DPDT 6P

## TPA-102-112-103-113-123-A4



TPA-102-A4 ON-ON  
TPA-112-A4 ON-(ON)  
TPA-103-A4 ON-OFF-ON  
TPA-113-A4 ON-OFF-(ON)  
TPA-123-A4 (ON)-OFF-(ON)  
SPDT 3P

## TPA-202-212-203-213-223-A4



TPA-202-A4 ON-ON  
TPA-212-A4 ON-(ON)  
TPA-203-A4 ON-OFF-ON  
TPA-213-A4 ON-OFF-(ON)  
TPA-223-A4 (ON)-OFF-(ON)  
DPDT 6P



# CONNECTOR MANUFACTURERS

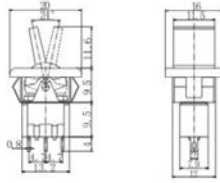
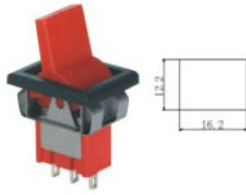
Rating TPA: 10A 125VAC ; 6A 250VAC /  
 Rating T3C: 10A 125VAC ; 6A 250VAC / 15A 125VAC ; 10A 250VAC / 20A 125VAC ; 15A 250VAC  
 Contact Resistance: 50m  $\Omega$  max  
 Insulation Resistance: 500VDC 1000M  $\Omega$  min

Dielectric Strength: 1500VAC, 1 Minute  
 Operating Temperature: -25°C~ +85°C  
 Electrical Life:  $\geq$  10,000 Cycles

**TOPTTEK®**  
 HARDWARE ELECTRONIC MANUFACTURER

www.toptek-co.com

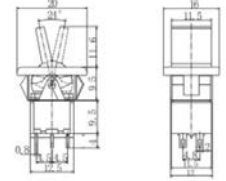
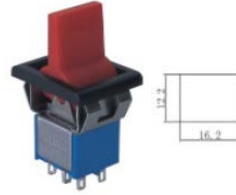
## TPA-102-112-103-113-123-F1



TPA-102-F1 ON-ON  
 TPA-112-F1 ON-(ON)  
 TPA-103-F1 ON-OFF-(ON)

TPA-113-F1 ON-OFF-(ON)  
 TPA-123-F1 (ON)-OFF-(ON)  
 SPDT 3P

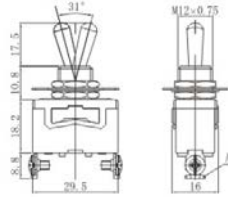
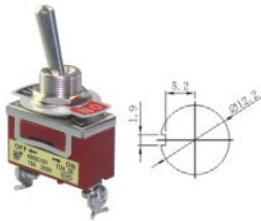
## TPA-202-212-203-213-223-F1



TPA-202-F1 ON-ON  
 TPA-212-F1 ON-(ON)  
 TPA-203-F1 ON-OFF-(ON)

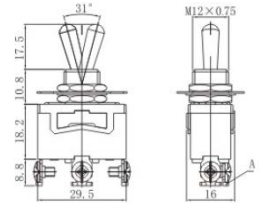
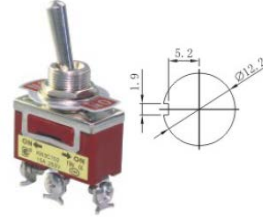
TPA-213-F1 ON-OFF-(ON)  
 TPA-223-F1 (ON)-OFF-(ON)  
 DPDT 6P

## T3C-101-111



T3C-101 ON-OFF  
 T3C-111 OFF-(ON)  
 SPST 2P

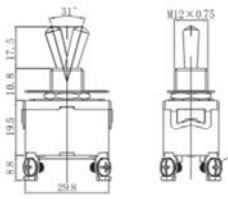
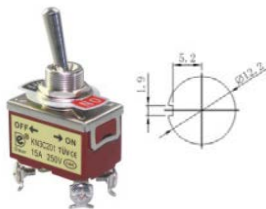
## T3C-102-112-103-113-123



T3C-102 ON-ON  
 T3C-112 ON-(ON)  
 T3C-103 ON-OFF-(ON)

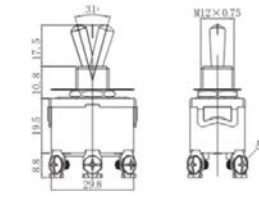
T3C-113 ON-OFF-(ON)  
 T3C-123 (ON)-OFF-(ON)  
 SPDT 3P

## T3C-201-211



T3C-201 ON-OFF  
 T3C-211 OFF-(ON)  
 DPST 4P

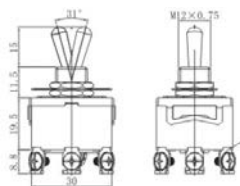
## T3C-202-212-203-213-223



T3C-202 ON-ON  
 T3C-212 ON-(ON)  
 T3C-203 ON-OFF-(ON)

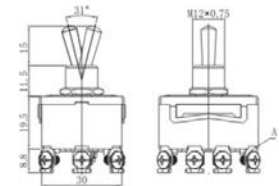
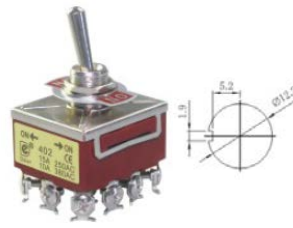
T3C-213 ON-OFF-(ON)  
 T3C-223 (ON)-OFF-(ON)  
 DPDT 6P

## T3C-302-303



T3C-302 ON-ON  
 T3C-303 ON-OFF-(ON)  
 SPDT 9P

## T3C-402-403



T3C-402 ON-ON  
 T3C-403 ON-OFF-(ON)  
 4PDT 12P

# Toggle Switch



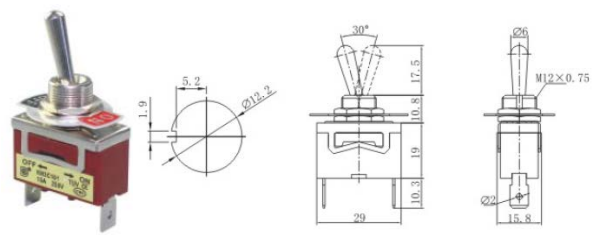
Rating : 10A 125VAC ; 6A 250VAC / 15A 125VAC ; 10A 250VAC / 20A 125VAC ; 15A 250VAC  
 Contact Resistance: 50m Ω max  
 Insulation Resistance: 500VDC 1000M Ω min

Dielectric Strength: 1500VAC, 1 Minute  
 Operating Temperature: -25°C~ +85°C  
 Electrical Life: ≥ 10,000 Cycles

**TOPTek**  
 HARDWARE ELECTRONIC MANUFACTURER

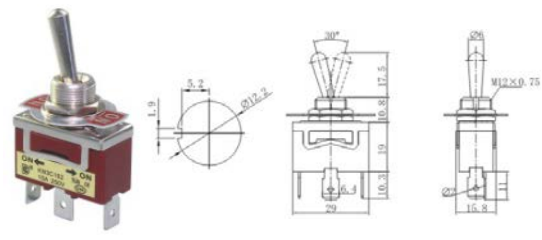
www.toptek-co.com

## T3C-101-111-P



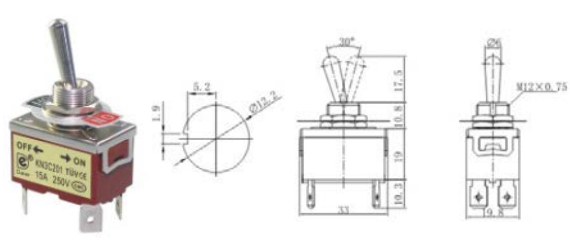
T3C-101-P ON-OFF  
 T3C-111-P OFF-(ON)  
 SPST 2P

## T3C-102-112-103-113-123-P



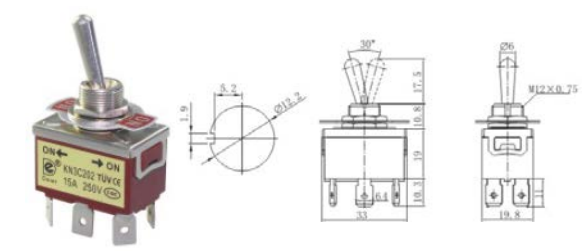
T3C-102-P ON-ON      T3C-113-P ON-OFF-(ON)  
 T3C-112-P ON-(ON)    T3C-123-P (ON)-OFF-(ON)  
 T3C-103-P ON-OFF-ON    SPDT 3P

## T3C-201-211-P



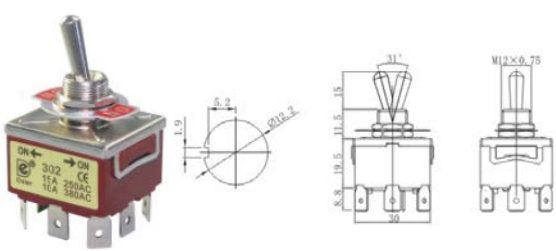
T3C-201-P ON-OFF  
 T3C-211-P OFF-(ON)  
 DPST 4P

## T3C-202-212-203-213-223-P



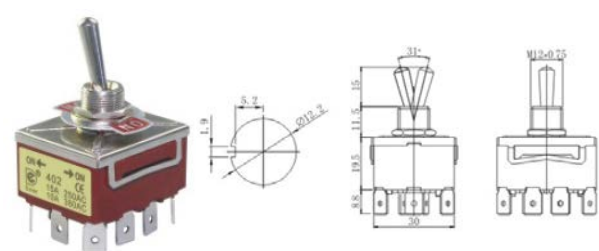
T3C-202-P ON-ON      T3C-213-P ON-OFF-(ON)  
 T3C-212-P ON-(ON)    T3C-223-P (ON)-OFF-(ON)  
 T3C-203-P ON-OFF-ON    DPDT 6P

## T3C-302-303-P



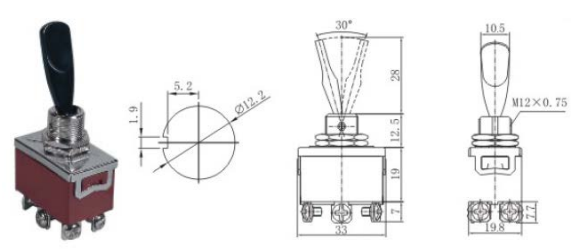
T3C-302-P ON-ON  
 T3C-303-P ON-OFF-ON  
 3PDT 9P

## T3C-402-403-P



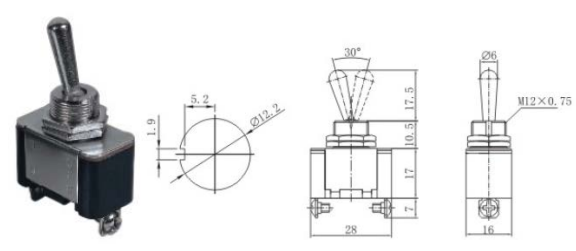
T3C-402-P ON-ON  
 T3C-403-P ON-OFF-ON  
 4PDT 12P

## T3C-202-212-203-213-223-E



T3C-202-E ON-ON      T3C-213-E ON-OFF-(ON)  
 T3C-212-E ON-(ON)    T3C-223-E (ON)-OFF-(ON)  
 T3C-203-E ON-OFF-ON    DPDT 6P

## T3A-101



T3A-101 ON-OFF  
 SPST 2P

14  
 \*  
 31





# CONNECTOR MANUFACTURERS

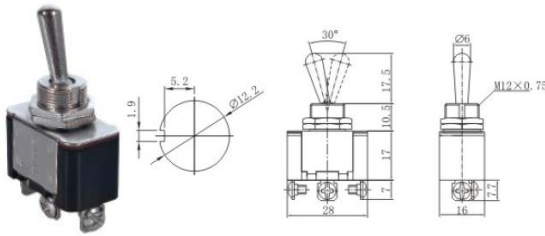
Rating : 10A 125VAC ; 6A 250VAC / 15A 125VAC ; 10A 250VAC / 20A 125VAC ; 15A 250VAC  
 Contact Resistance: 50m  $\Omega$  max  
 Insulation Resistance: 500VDC 1000M  $\Omega$  min

Dielectric Strength: 1500VAC, 1 Minute  
 Operating Temperature: -25°C~ +85°C  
 Electrical Life:  $\geq$  10,000 Cycles

**TOPTTEK**<sup>®</sup>  
 HARDWARE ELECTRONIC MANUFACTURER

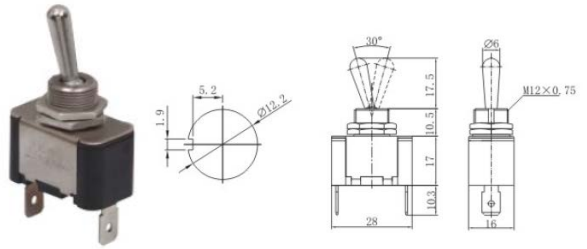
www.topttek-co.com

## T3A-102-112-103-113-123



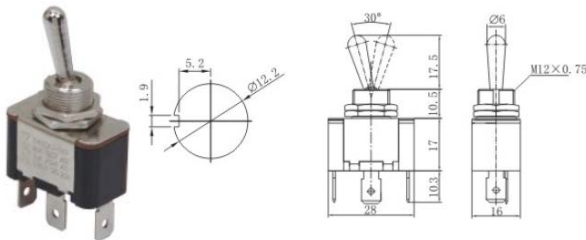
T3A-102 ON-ON      T3A-113 ON-OFF-(ON)  
 T3A-112 ON-(ON)    T3A-123 (ON)-OFF-(ON)  
 T3A-103 ON-OFF-ON    SPDT 3P

## T3A-101-P



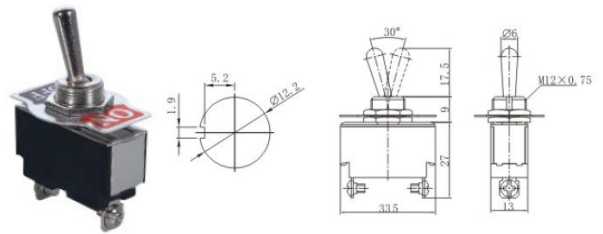
T3A-101-P ON-OFF  
 SPST 2P

## T3A-102-112-103-113-123-P



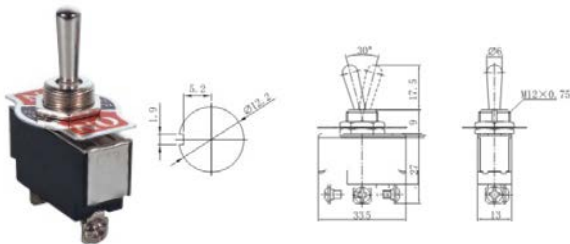
T3A-102-P ON-ON      T3A-113-P ON-OFF-(ON)  
 T3A-112-P ON-(ON)    T3A-123-P (ON)-OFF-(ON)  
 T3A-103-P ON-OFF-ON    SPDT 3P

## T3B-101



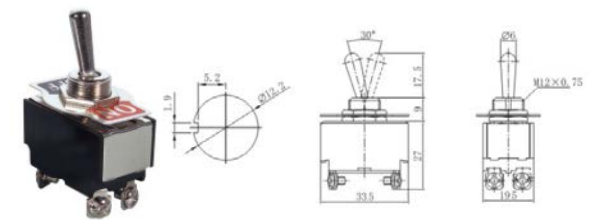
T3B-101 ON-OFF  
 SPST 2P

## T3B-102-112-103-113-123



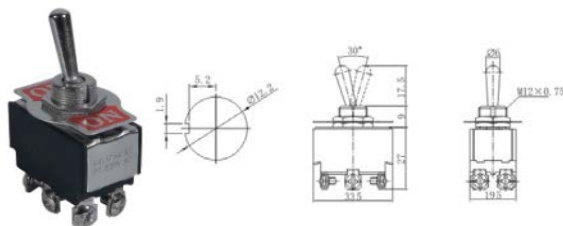
T3B-102 ON-ON      T3B-113 ON-OFF-(ON)  
 T3B-112 ON-(ON)    T3B-123 (ON)-OFF-(ON)  
 T3B-103 ON-OFF-ON    SPDT 3P

## T3B-201



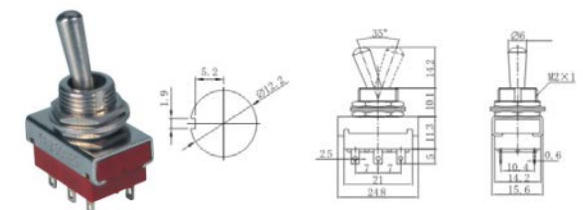
T3B-201 ON-OFF  
 DPST 4P

## T3B-202-212-203-213-223



T3B-202 ON-ON      T3B-213 ON-OFF-(ON)  
 T3B-212 ON-(ON)    T3B-223 (ON)-OFF-(ON)  
 T3B-203 ON-OFF-ON    DPDT 6P

## T-32



T-32 ON-ON  
 DPDT 6P  
 10A 125VAC; 5A 250VAC

# Toggle Switch



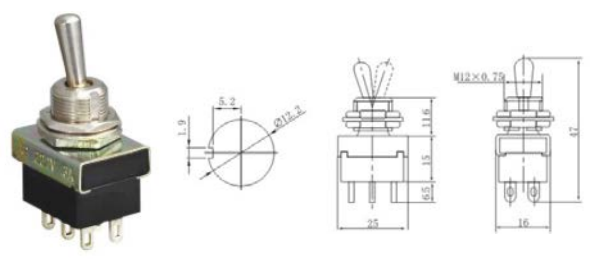
Rating: 10A 125VAC; 6A 250VAC / 15A 125VAC; 10A 250VAC / 20A 125VAC; 15A 250VAC  
 Contact Resistance: 50m Ω max  
 Insulation Resistance: 500VDC 1000M Ω min

Dielectric Strength: 1500VAC, 1 Minute  
 Operating Temperature: -25°C~ +85°C  
 Electrical Life: ≥ 10,000 Cycles

**TOPTek**  
 HARDWARE ELECTRONIC MANUFACTURER

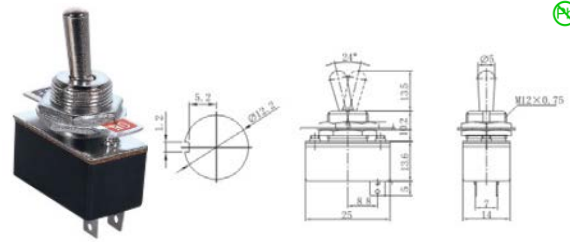


## T3-3A



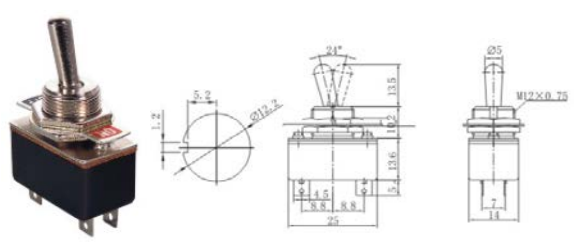
T3-3A ON-ON  
 DPDT 6P  
 6A 125VAC; 3A 250VAC

## T3-1



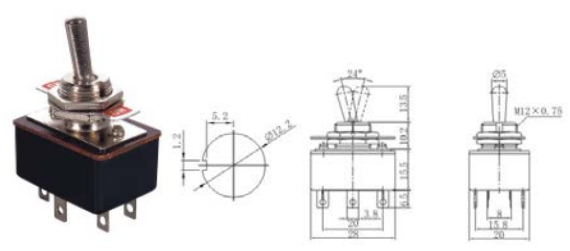
T3-1 ON-OFF  
 SPST 2P  
 4A 125VAC; 2A 250VAC

## T-3-2



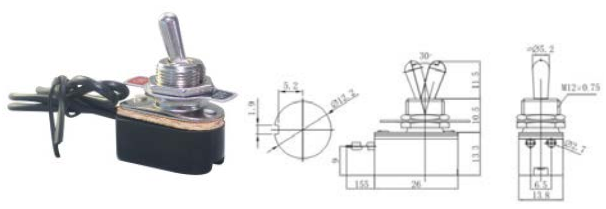
T-3-2 ON-ON  
 SPDT 4P  
 4A 125VAC; 2A 250VAC

## T-3-3



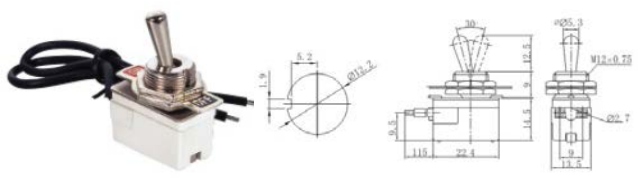
T-3-3 ON-ON  
 DPDT 6P  
 5A 125VAC; 3A 250VAC

## TS-1



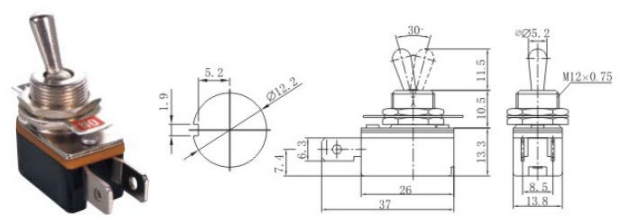
TS-1 ON-OFF  
 SPST 2P  
 6A 125VAC; 3A 250VAC; 10A 12VDC

## TS-2



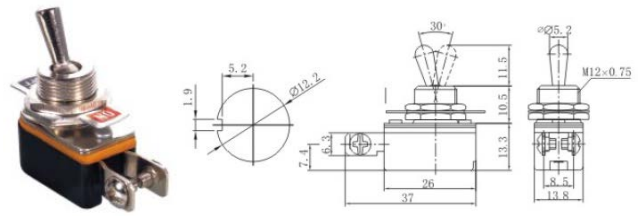
TS-2 ON-OFF  
 SPST 2P  
 6A 125VAC; 3A 250VAC; 10A 12VDC

## TH-1



TH-1 ON-OFF  
 SPST 2P  
 6A 125VAC; 3A 250VAC; 10A 12VDC

## TH-1S



TH-1 ON-OFF  
 SPST 2P (Screw Terminals)  
 6A 125VAC; 3A 250VAC; 10A 12VDC

14  
 \*  
 33

