

# Rocker Switch

**TOPTEK®**

HARDWARE ELECTRONIC MANUFACTURER



[www.toptek-co.com](http://www.toptek-co.com)

TOPTEK srl  
10015 - IVREA (TO) - ITALY  
tel. +39 0125 251 211 - fax +39 0341 367 607  
[info@toptek-co.com](mailto:info@toptek-co.com)

# Rocker Switch



RoHS

Rating: 10A 125VAC ; 6A 250VAC  
 Contact Resistance: 35m Ω max  
 Insulation Resistance: 500VDC 100M Ω min

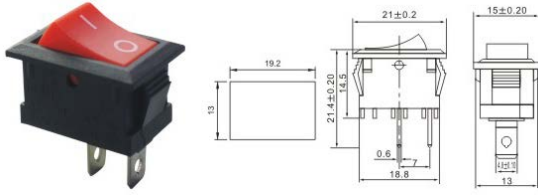
Dielectric Strength: 1500VAC, 1 Minute  
 Operating Temperature: -25°C~ +85°C  
 Electrical Life: ≥ 10,000 Cycles

TOPTEK®  
 HARDWARE ELECTRONIC MANUFACTURER



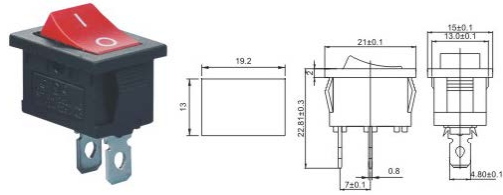
www.toptek-co.com

## A-TOP1-101



A-TOP1-101 ON-OFF

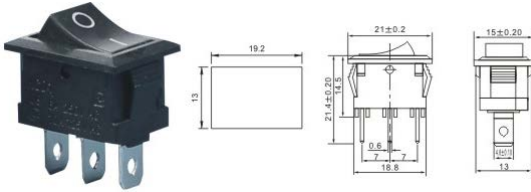
## A-TOP1-1-101



A-TOP1-1-101 ON-OFF

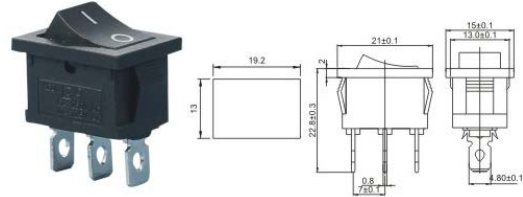
14  
\*  
9

## A-TOP1-102



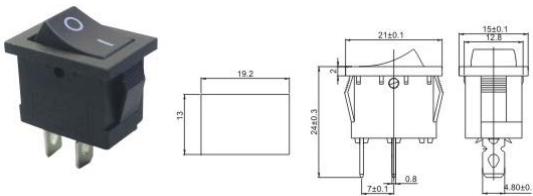
A-TOP1-102 ON-ON

## A-TOP1-1-102



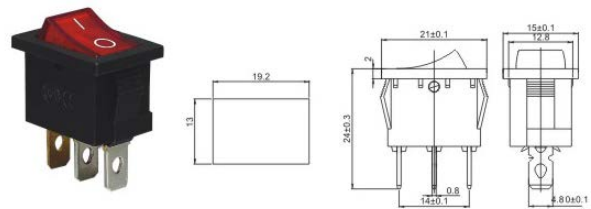
A-TOP1-1-102 ON-ON

## A-TOP1-2-101 / 111



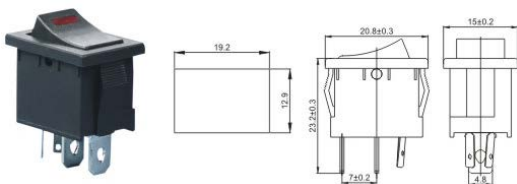
A-TOP1-2-101 ON-OFF  
 A-TOP1-2-111 OFF-(ON)

## A-TOP1-2-101N



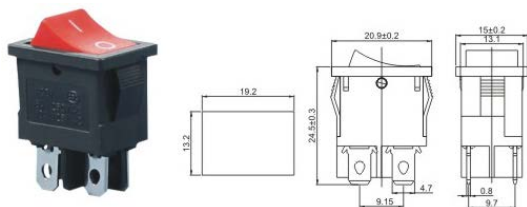
A-TOP1-2-101N ON-OFF

## A-TOP1-3-101EN



A-TOP1-3-101EN ON-OFF (3V LED)

## A-TOP1-4-201



A-TOP1-4-201 ON-OFF



# CONNECTOR MANUFACTURERS

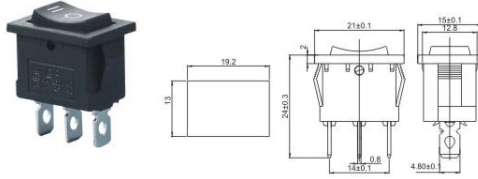
Rating: 10A 125VAC ; 6A 250VAC  
 Contact Resistance: 35m Ω max  
 Insulation Resistance: 500VDC 100M Ω min

Dielectric Strength: 1500VAC, 1 Minute  
 Operating Temperature: -25°C~ +85°C  
 Electrical Life: ≥ 10,000 Cycles

**TOPTek**<sup>®</sup>  
 HARDWARE ELECTRONIC MANUFACTURER

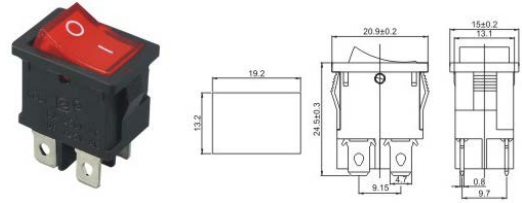
 www.toptek-co.com

## A-TOP1-2-103 / 113 / 123



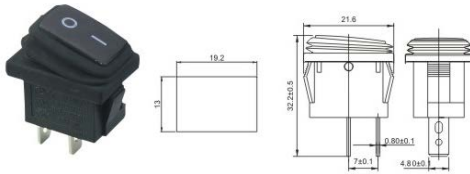
A-TOP1-2-103 ON-OFF-ON  
 A-TOP1-2-113 ON-OFF-(ON)  
 A-TOP1-2-123 (ON)-OFF-(ON)

## A-TOP1-4-201N



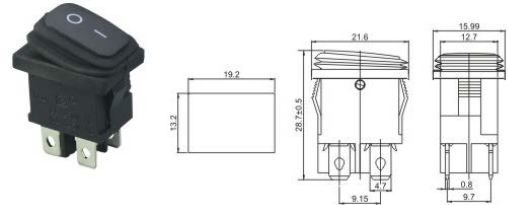
A-TOP1-4-201N-X ON-OFF

## A-TOP1-2-101W



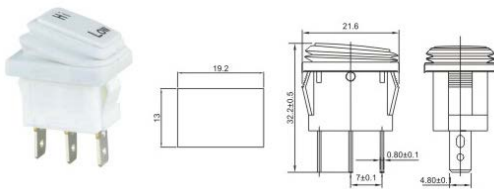
A-TOP1-2-101W ON-OFF

## A-TOP1-4-201W / 201NW



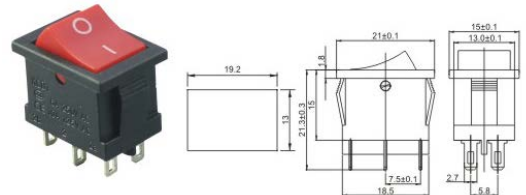
A-TOP1-4-201W ON-OFF  
 A-TOP1-4-201NW ON-OFF

## A-TOP1-2-102W / 103W



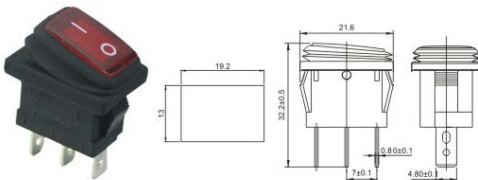
A-TOP1-2-102W ON-ON  
 A-TOP1-2-103W ON-OFF-ON

## A-TOP1-1-202 / 203



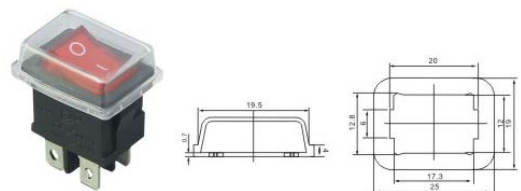
A-TOP1-1-202 ON-ON  
 A-TOP1-1-203 ON-OFF-ON

## A-TOP1-2-101NW



A-TOP1-2-101NW ON-OFF

## A-TOP1-01



A-TOP1-01

# Rocker Switch



RoHS

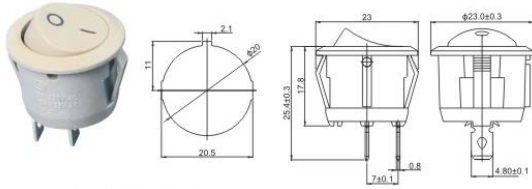
Rating: 10A 125VAC ; 6A 250VAC  
 Contact Resistance: 35m  $\Omega$  max  
 Insulation Resistance: 500VDC 100M  $\Omega$  min

Dielectric Strength: 1500VAC, 1 Minute  
 Operating Temperature: -25°C~ +85°C  
 Electrical Life:  $\geq$  10,000 Cycles

TOPTEK®  
 HARDWARE ELECTRONIC MANUFACTURER

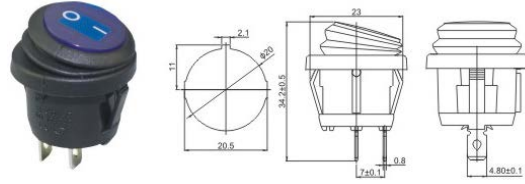


## A-TOP1-5-101/111



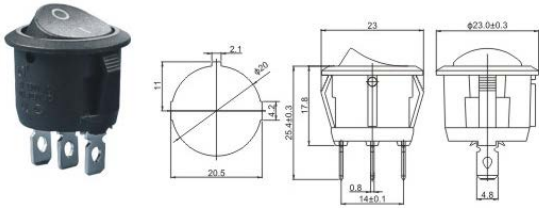
A-TOP1-5-101 ON-OFF  
 A-TOP1-5-111 OFF-(ON)

## A-TOP1-5-101W



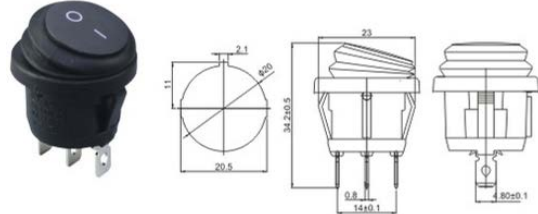
A-TOP1-5-101W ON-OFF

## A-TOP1-5-102



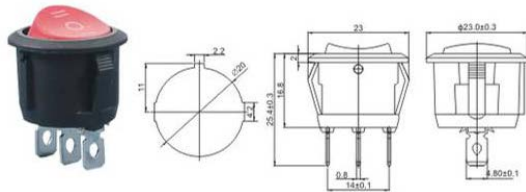
A-TOP1-5-102 ON-ON

## A-TOP1-5-102W/103W



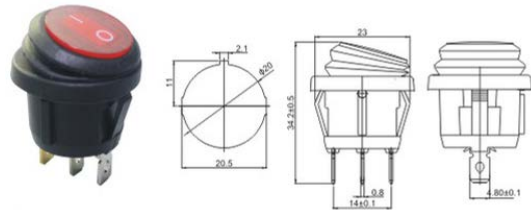
A-TOP1-5-102W ON-ON  
 A-TOP1-5-103W ON-OFF-ON

## A-TOP1-5-103 / 113 / 123



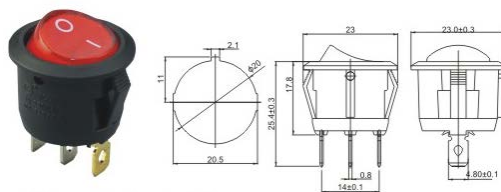
A-TOP1-5-103 ON-OFF-ON  
 A-TOP1-5-113 ON-OFF-(ON)  
 A-TOP1-5-123 (ON)-OFF-(ON)

## A-TOP1-5-101NW



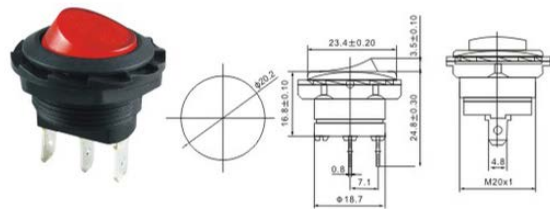
A-TOP1-5-101NW ON-OFF

## A-TOP1-5-101N-X



A-TOP1-5-101N-X ON-OFF

## A-TOP1-7-101Y / 101NY



A-TOP1-7-101Y ON-OFF 2P  
 A-TOP1-7-101NY ON-OFF 3P

14  
 \*  
 11



# CONNECTOR MANUFACTURERS

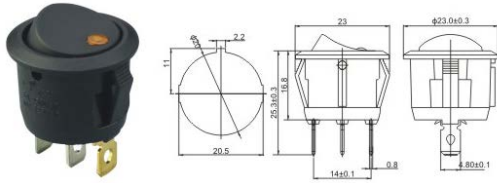
Rating: 10A 125VAC ; 6A 250VAC  
 Contact Resistance: 35m Ω max  
 Insulation Resistance: 500VDC 100M Ω min

Dielectric Strength: 1500VAC, 1 Minute  
 Operating Temperature: -25°C~ +85°C  
 Electrical Life: ≥ 10,000 Cycles

**TOPTTEK®**  
 HARDWARE ELECTRONIC MANUFACTURER

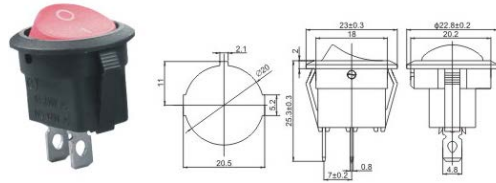
www.toptek-co.com

## A-TOP1-5-101 EN



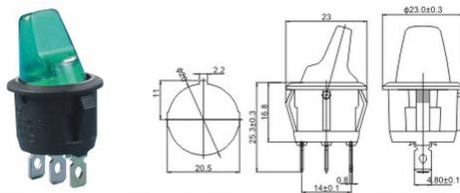
A-TOP1-5-101EN ON-OFF

## A-TOP1-8-101



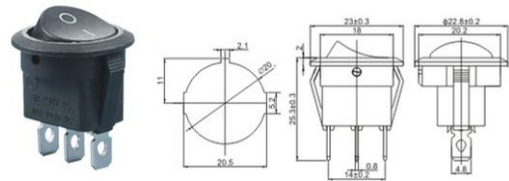
A-TOP1-8-101 ON-OFF

## A-TOP1-5-101H/102H/103H/101NH



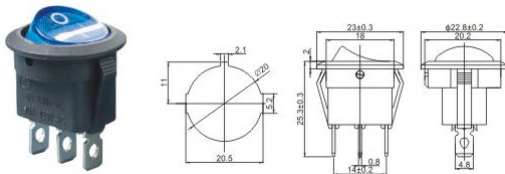
A-TOP1-5-101H ON-OFF  
 A-TOP1-5-102H ON-ON  
 A-TOP1-5-103H ON-OFF-ON  
 A-TOP1-5-101NH ON-OFF

## A-TOP1-8-102 / 103



A-TOP1-8-102 ON-ON  
 A-TOP1-8-103 ON-OFF-ON

## A-TOP1-8-101N



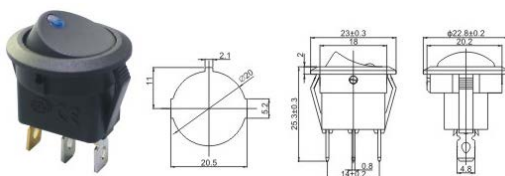
A-TOP1-8-101N ON-OFF

## A-TOP1-02



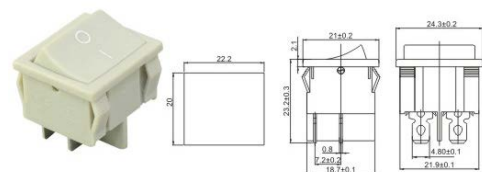
A-TOP1-02

## A-TOP1-8-101EN



A-TOP1-8-101EN ON-OFF

## A-TOP1-6-201



A-TOP1-6-201 ON-OFF

# Rocker Switch



RoHS

Rating: 10A 125VAC ; 6A 250VAC  
 Contact Resistance: 35m Ω max  
 Insulation Resistance: 500VDC 100M Ω min

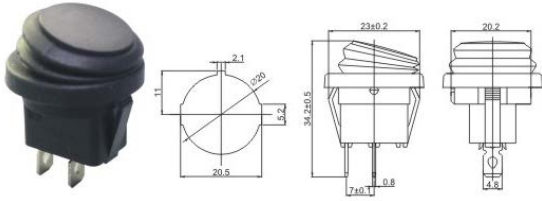
Dielectric Strength: 1500VAC, 1 Minute  
 Operating Temperature: -25°C~ +85°C  
 Electrical Life: ≥ 10,000 Cycles

TOPTEK®  
 HARDWARE ELECTRONIC MANUFACTURER



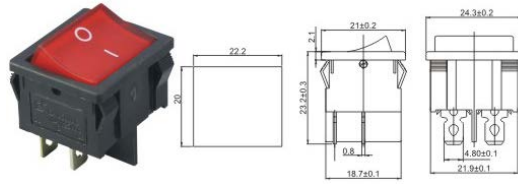
www.toptek-co.com

## A-TOP1-8-101W



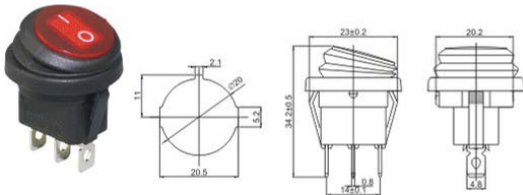
A-TOP1-8-101W ON-OFF

## A-TOP1-6-201N-X



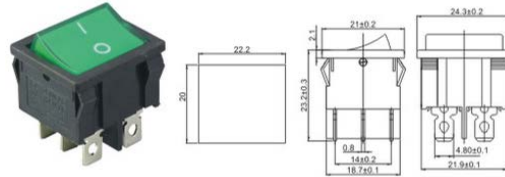
A-TOP1-6-201N-X ON-OFF With Light

## A-TOP1-8-102W/103W



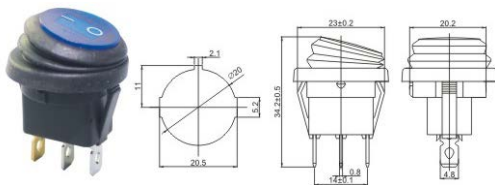
A-TOP1-8-102W ON-ON  
 A-TOP1-8-103W ON-OFF-ON

## A-TOP1-6-202/202N/203



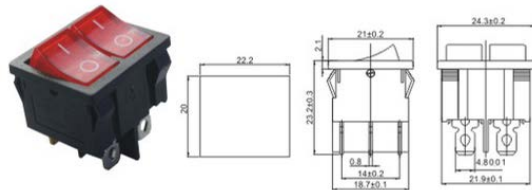
A-TOP1-6-202 ON-ON  
 A-TOP1-6-202N ON-ON  
 A-TOP1-6-203 ON-OFF-ON

## A-TOP1-8-101NW



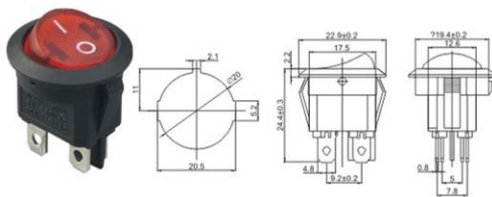
A-TOP1-8-101NW ON-OFF

## A-TOP1-6-2101/2101N/2102



A-TOP1-6-2101 ON-OFF  
 A-TOP1-6-2101N ON-OFF  
 A-TOP1-6-2102 ON-ON

## A-TOP1-8-201/201N-X



A-TOP1-8-201 ON-OFF  
 A-TOP1-8-201N-X ON-OFF With Light

## A-TOP1-15



A-TOP1-15

14  
 \*  
 13



# CONNECTOR MANUFACTURERS

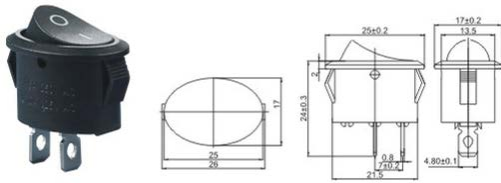
Rating: 10A 125VAC ; 6A 250VAC  
 Contact Resistance: 35m Ω max  
 Insulation Resistance: 500VDC 100M Ω min

Dielectric Strength: 1500VAC, 1 Minute  
 Operating Temperature: -25°C~ +85°C  
 Electrical Life: ≥ 10,000 Cycles

**TOPTek**<sup>®</sup>  
 HARDWARE ELECTRONIC MANUFACTURER

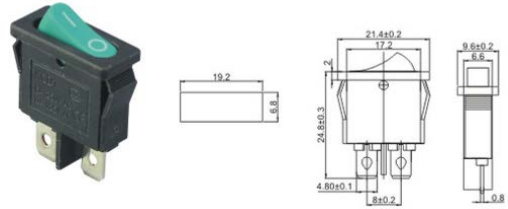
www.toptek-co.com

## A-TOP1-9-101



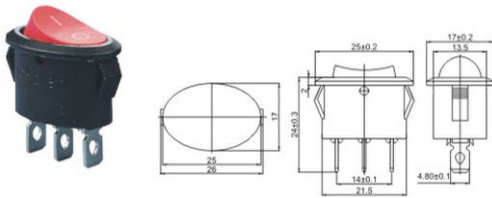
A-TOP1-9-101 ON-OFF

## A-TOP1-12-101



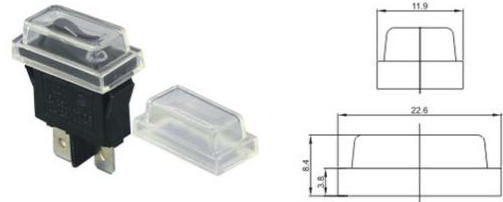
A-TOP1-12-101 ON-OFF

## A-TOP1-9-102/103



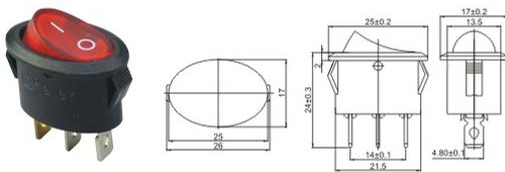
A-TOP1-9-102 ON-ON  
 A-TOP1-9-103 ON-OFF-ON

## A-TOP1-14



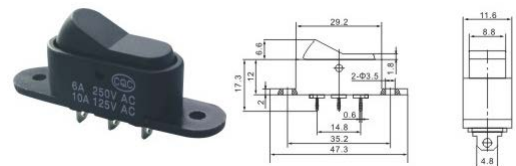
A-TOP1-14

## A-TOP1-9-101N



A-TOP1-9-101N ON-OFF

## A-TOP1-13-102



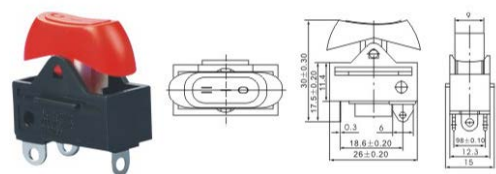
A-TOP1-13-102 ON-ON

## A-TOP1-13



A-TOP1-13

## A-TOP1-122-1



A-TOP1-122-1 OFF-ON-ON

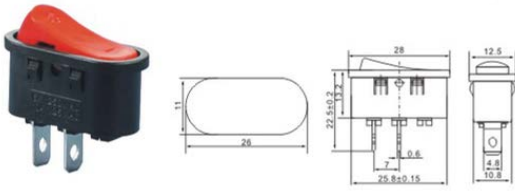
Rating A-TOP1: 10A 125VAC; 6A 250VAC / A-TOP3: 20A 125VAC; 15A 250VAC  
 Contact Resistance: 35m Ω max  
 Insulation Resistance: 500VDC 100M Ω min

Dielectric Strength: 1500VAC, 1 Minute  
 Operating Temperature: -25°C~ +85°C  
 Electrical Life: ≥ 10,000 Cycles

**TOPTEK**<sup>®</sup>  
 HARDWARE ELECTRONIC MANUFACTURER

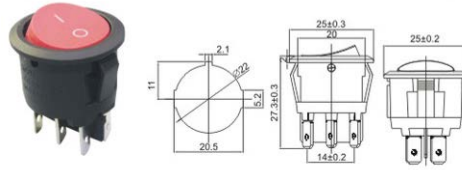


## A-TOP1-10-101/102



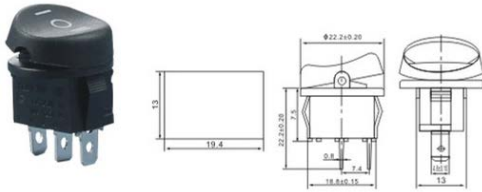
A-TOP1-10-101 ON-OFF  
 A-TOP1-10-102 ON-ON

## A-TOP1-5-202/203



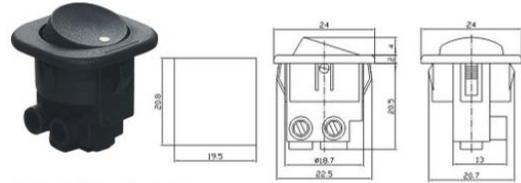
A-TOP1-5-202 ON-ON  
 A-TOP1-5-203 ON-OFF-ON

## A-TOP1-11-101/103



A-TOP1-11-101 ON-OFF  
 A-TOP1-11-103 ON-OFF-ON

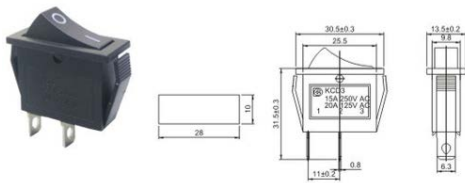
## A-TOP1-7-101



A-TOP1-7-101 ON-OFF

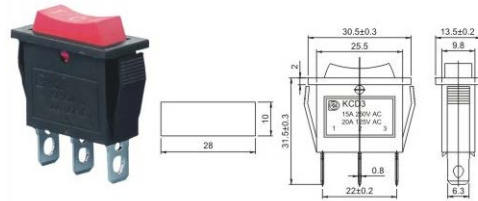
14  
 \*  
 15

## A-TOP3-101/111



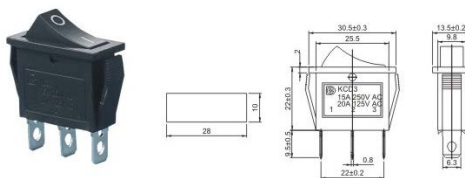
A-TOP3-101 ON-OFF  
 A-TOP3-111 OFF-(ON)

## A-TOP3-103



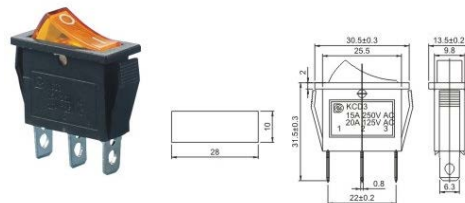
A-TOP3-103 ON-OFF-ON

## A-TOP3-102



A-TOP3-102 ON-ON

## A-TOP3-101N



A-TOP3-101N ON-OFF





# CONNECTOR MANUFACTURERS

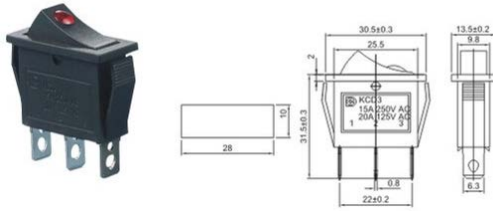
Rating: 20A 125VAC ; 15A 250VAC  
 Contact Resistance: 35m Ω max  
 Insulation Resistance: 500VDC 100M Ω min

Dielectric Strength: 1500VAC, 1 Minute  
 Operating Temperature: -25°C~ +85°C  
 Electrical Life: ≥ 10,000 Cycles

**TOPTEK®**  
 HARDWARE ELECTRONIC MANUFACTURER

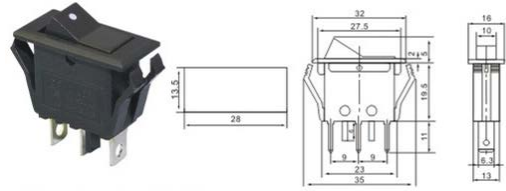
www.toptek-co.com

## A-TOP3-101EN



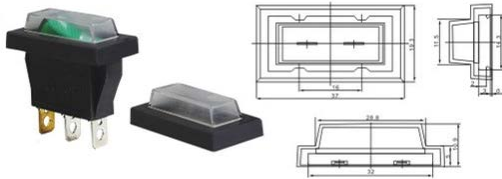
A-TOP3-101EN ON-OFF

## A-TOP3-2-102V



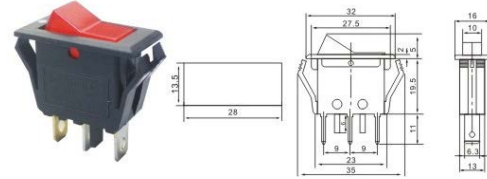
A-TOP3-2-102V ON-ON

## A-TOP3-03



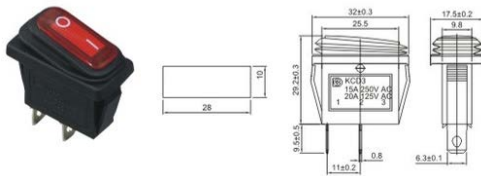
A-TOP3-03

## A-TOP3-2-101NV



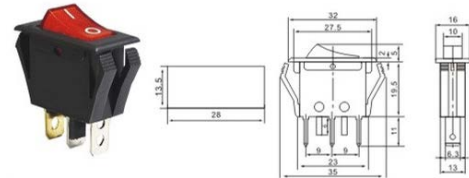
A-TOP3-2-101NV ON-OFF

## A-TOP3-101W



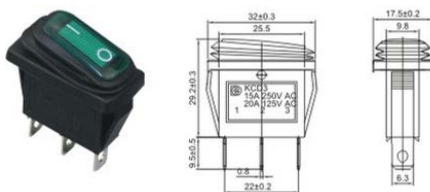
A-TOP3-101W ON-OFF

## A-TOP3-2-101C/102C/101NC



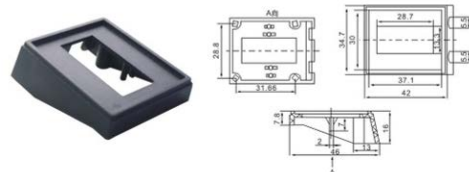
A-TOP3-2-101C ON-OFF  
 A-TOP3-2-102C ON-ON  
 A-TOP3-2-101NC ON-OFF

## A-TOP3-102W/103W



A-TOP3-102W ON-ON  
 A-TOP3-103W ON-OFF-ON

## A-TOP3-03 Panel



A-TOP3-03 Panel

# Rocker Switch



Rating: 20A 125VAC ; 15A 250VAC  
 Contact Resistance: 35m Ω max  
 Insulation Resistance: 500VDC 100M Ω min

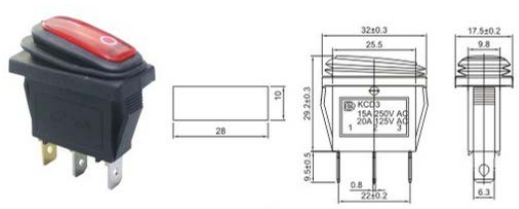
Dielectric Strength: 1500VAC, 1 Minute  
 Operating Temperature: -25°C~ +85°C  
 Electrical Life: ≥ 10,000 Cycles

**TOPTek**  
 HARDWARE ELECTRONIC MANUFACTURER



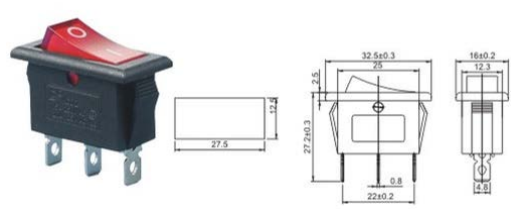
www.toptek-co.com

## A-TOP3-101NW



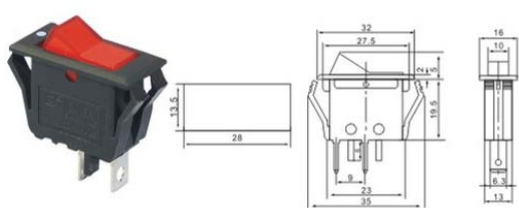
A-TOP3-101NW ON-OFF

## A-TOP3-3-101N



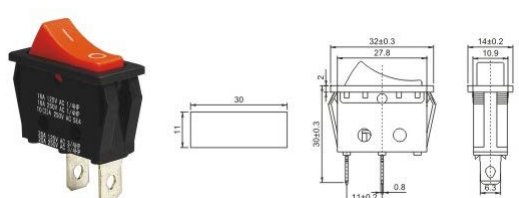
A-TOP3-3-101N ON-OFF

## A-TOP3-2-101V



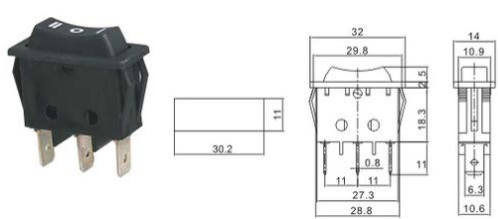
A-TOP3-2-101V ON-OFF

## A-TOP3-4-101



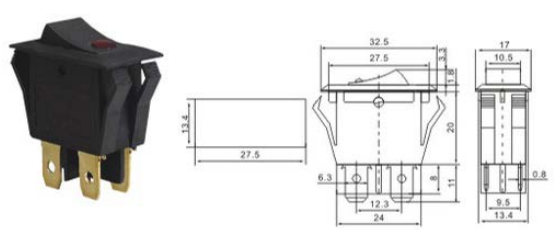
A-TOP3-4-101 ON-OFF

## A-TOP3-4-103/123



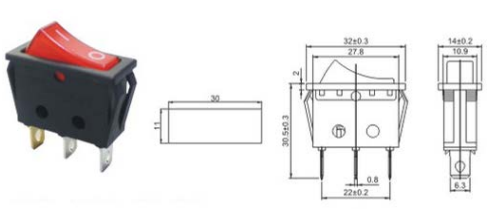
A-TOP3-4-103 ON-OFF-ON  
 A-TOP3-4-123 (ON)-OFF-(ON)

## A-TOP3-11-201EN



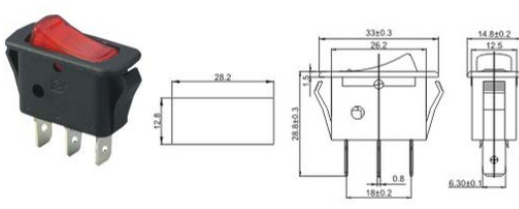
A-TOP3-11-201EN ON-OFF

## A-TOP3-4-101N



A-TOP3-4-101N ON-OFF

## A-TOP3-12-101N



A-TOP3-12-101N ON-OFF

14  
 \*  
 17



# CONNECTOR MANUFACTURERS

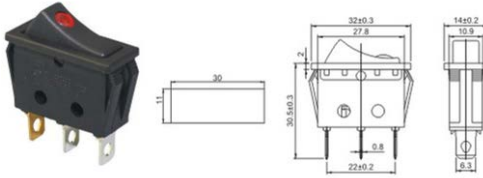
Rating: 20A 125VAC ; 15A 250VAC  
 Contact Resistance: 35m Ω max  
 Insulation Resistance: 500VDC 100M Ω min

Dielectric Strength: 1500VAC, 1 Minute  
 Operating Temperature: -25°C~ +85°C  
 Electrical Life: ≥ 10,000 Cycles

**TOPTek**<sup>®</sup>  
 HARDWARE ELECTRONIC MANUFACTURER

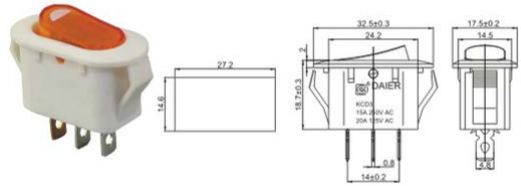
www.toptek-co.com

## A-TOP3-4-101EN



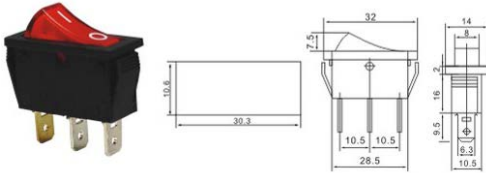
A-TOP3-4-101EN ON-OFF

## A-TOP3-18-101N



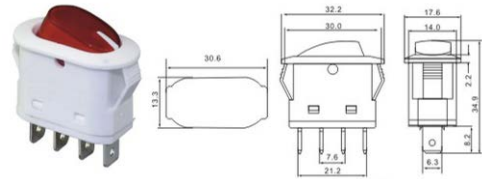
A-TOP3-18-101N ON-OFF

## A-TOP3-5-101N



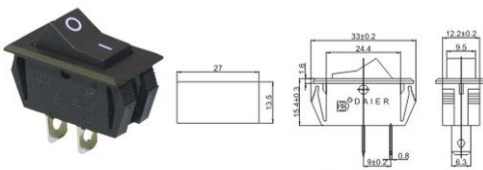
A-TOP3-5-101N ON-OFF

## A-TOP3-14-201N



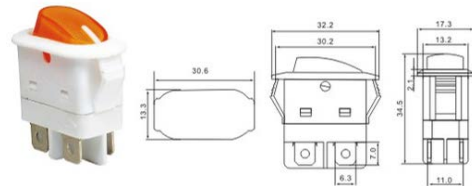
A-TOP3-14-201N ON-OFF

## A-TOP3-6-101



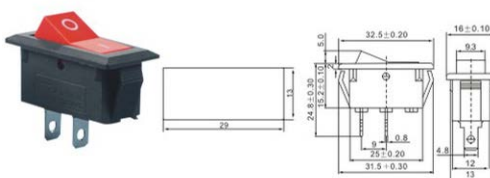
A-TOP3-6-101 ON-OFF

## A-TOP3-14P-201N



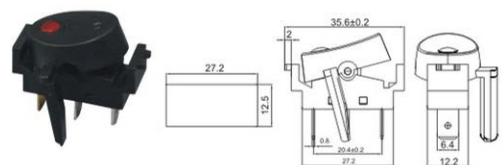
A-TOP3-14P-201N ON-OFF

## A-TOP3-8-101/102



A-TOP3-8-101 ON-OFF  
 A-TOP3-8-102 ON-ON

## A-TOP3-17-101EN



A-TOP3-17-101EN ON-OFF

# Rocker Switch



Rating: 20A 125VAC ; 16A 250VAC  
 Contact Resistance: 35m Ω max  
 Insulation Resistance: 500VDC 100M Ω min

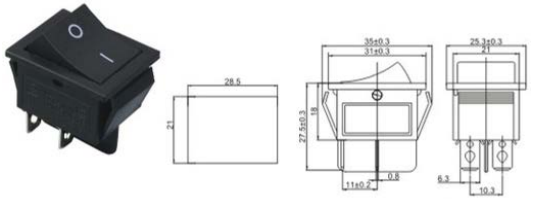
Dielectric Strength: 1500VAC, 1 Minute  
 Operating Temperature: -25°C~ +85°C  
 Electrical Life: ≥ 10,000 Cycles

**TOPTek**<sup>®</sup>  
 HARDWARE ELECTRONIC MANUFACTURER



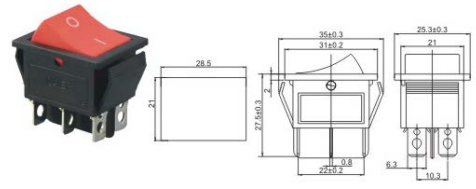
[www.toptek-co.com](http://www.toptek-co.com)

## A-TOP2-201/211



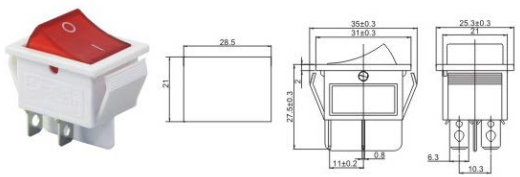
A-TOP2-201 ON-OFF  
 A-TOP2-211 OFF-(ON)

## A-TOP2-202/212



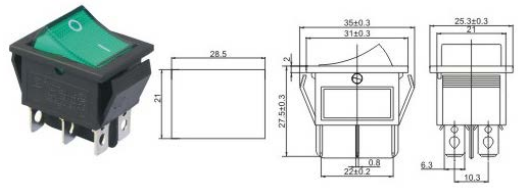
A-TOP2-202 ON-ON  
 A-TOP2-212 ON-(ON)

## A-TOP2-201N



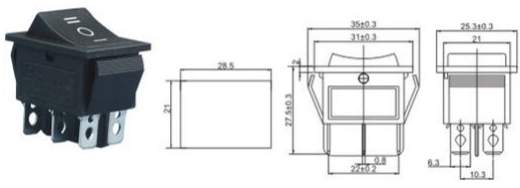
A-TOP2-201N ON-OFF

## A-TOP2-202N



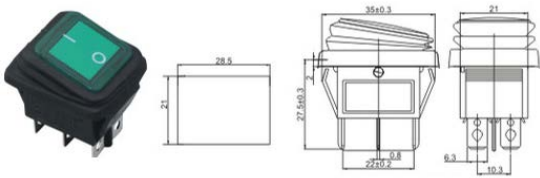
A-TOP2-202N ON-ON

## A-TOP2-203/213/223



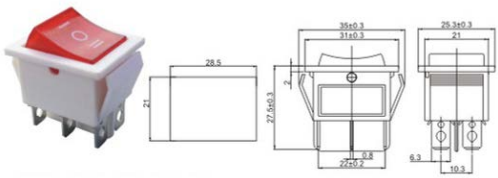
A-TOP2-203 ON-OFF-ON  
 A-TOP2-213 ON-OFF-(ON)  
 A-TOP2-223 (ON)-OFF-(ON)

## A-TOP2-202W/202NW/203W/203NW



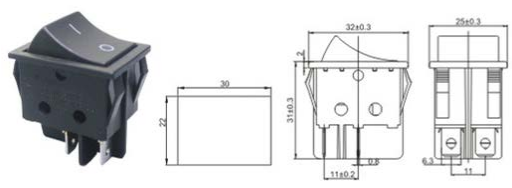
A-TOP2-202W ON-ON  
 A-TOP2-202NW ON-ON  
 A-TOP2-203W ON-OFF-ON  
 A-TOP2-203NW ON-OFF-ON

## A-TOP2-203N



A-TOP2-203N ON-OFF

## A-TOP2-201-X/211



A-TOP2-2-201-X ON-OFF W/o Light  
 A-TOP2-2-211 OFF-(ON)

14  
 \*  
 19



# CONNECTOR MANUFACTURERS

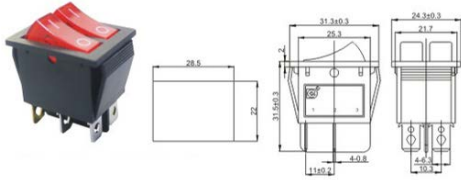
Rating: 20A 125VAC ; 16A 250VAC  
 Contact Resistance: 35m Ω max  
 Insulation Resistance: 500VDC 100M Ω min

Dielectric Strength: 1500VAC, 1 Minute  
 Operating Temperature: -25°C~ +85°C  
 Electrical Life: ≥ 10,000 Cycles

**TOPTTEK®**  
 HARDWARE ELECTRONIC MANUFACTURER

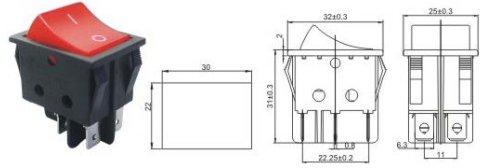
www.topttek-co.com

## A-TOP2-2101/2101N



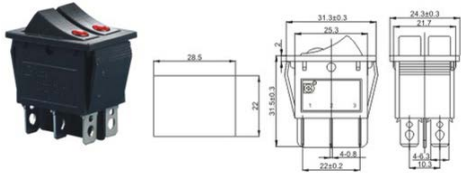
A-TOP2-2101 ON-OFF 4P  
 A-TOP2-2101N ON-OFF 6P

## A-TOP2-201N-X



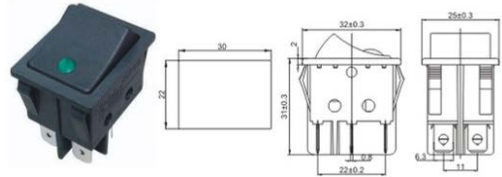
A-TOP2-201N-X ON-OFF W/o Light

## A-TOP2-2101EN



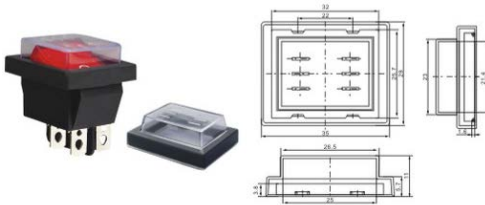
A-TOP2-2101EN ON-OFF

## A-TOP2-2-201EN



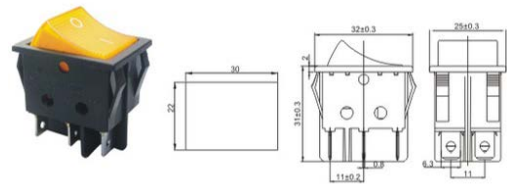
A-TOP2-2-201EN ON-OFF

## A-TOP2-04



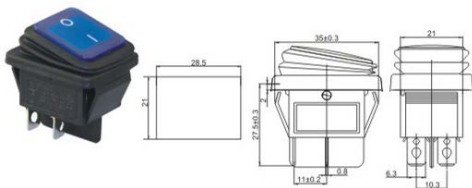
A-TOP2-04

## A-TOP2-2-202/202N



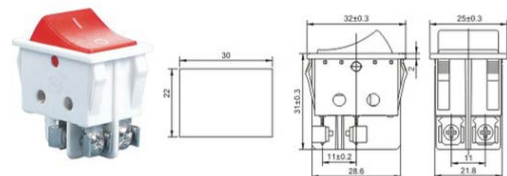
A-TOP2-2-202 ON-ON  
 A-TOP2-2-202N ON-ON

## A-TOP2-201W/201NW



A-TOP2-201W ON-OFF  
 A-TOP2-201NW ON-OFF

## A-TOP2-2-201NS



A-TOP2-2-201NS ON-OFF

# Rocker Switch



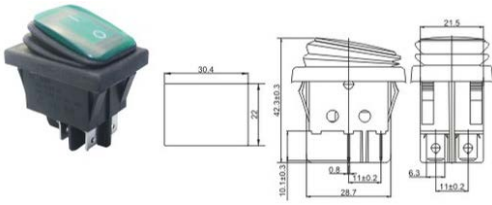
Rating: 20A 125VAC ; 16A 250VAC  
 Contact Resistance: 35m Ω max  
 Insulation Resistance: 500VDC 100M Ω min

Dielectric Strength: 1500VAC, 1 Minute  
 Operating Temperature: -25°C~ +85°C  
 Electrical Life: ≥ 10,000 Cycles

**TOPTek**<sup>®</sup>  
 HARDWARE ELECTRONIC MANUFACTURER

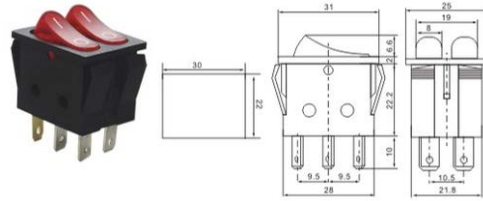


## A-TOP2-2-201W/201NW



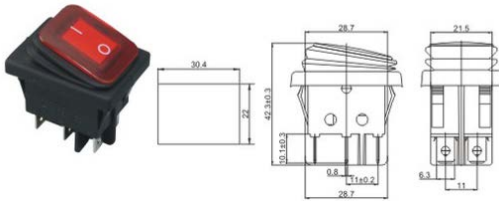
A-TOP2-2-201W ON-OFF  
 A-TOP2-2-201NW ON-OFF

## A-TOP2-5-2101/2101N



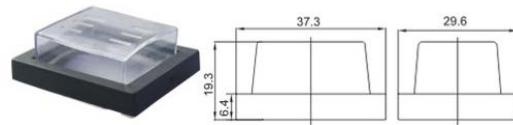
A-TOP2-5-2101 ON-OFF 4P  
 A-TOP2-5-2101N ON-OFF 6P

## A-TOP2-2-202W/202NW



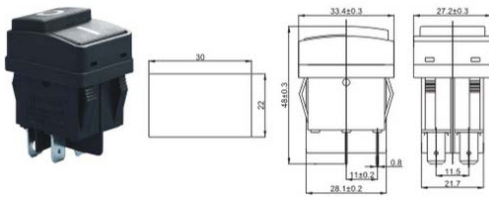
A-TOP2-2-202W ON-ON  
 A-TOP2-2-202NW ON-ON

## A-TOP2-04B



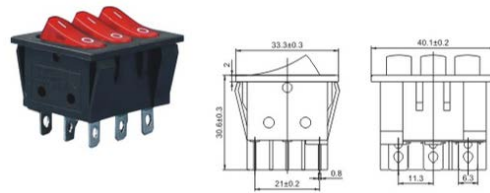
A-TOP2-04B

## A-TOP2-2-201P



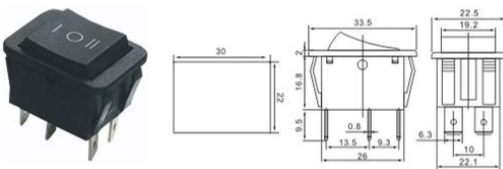
A-TOP2-2-201P ON-OFF

## A-TOP2-3101/3101N/2-3101N



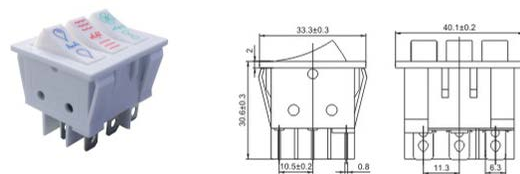
A-TOP2-3101 ON-OFF 6P  
 A-TOP2-3101N ON-OFF 9P  
 A-TOP2-2-3101N ON-OFF 8P White Color

## A-TOP2-3-201/211/202/212/203/223



A-TOP2-3-201 ON-OFF    A-TOP2-3-212 ON-(ON)  
 A-TOP2-3-211 OFF-(ON)    A-TOP2-3-203 ON-OFF-ON  
 A-TOP2-3-202 ON-ON    A-TOP2-3-223 (ON)-OFF-(ON)

## A-TOP2-3-3101N



A-TOP2-3-3101N ON-OFF 8P

14  
 \*  
 21





# Rocker Switch



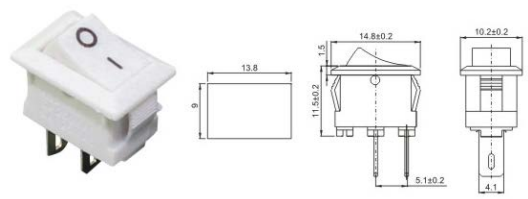
Rating: 6A 125VAC ; 3A 250VAC  
 Contact Resistance: 35m Ω max  
 Insulation Resistance: 500VDC 100M Ω min

Dielectric Strength: 1500VAC, 1 Minute  
 Operating Temperature: -25°C~ +85°C  
 Electrical Life: ≥ 10,000 Cycles

**TOPTEK**<sup>®</sup>  
 HARDWARE ELECTRONIC MANUFACTURER

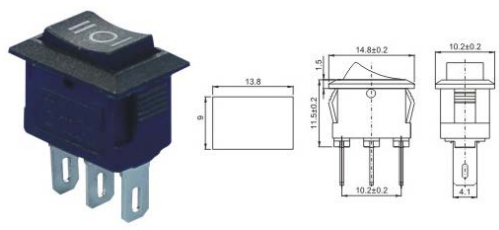


## A-TOP5-101



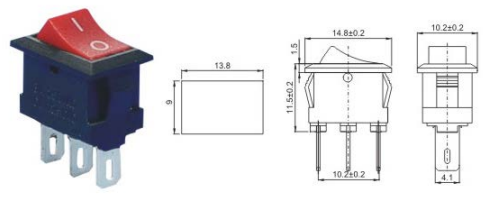
A-TOP5-101 ON-OFF

## A-TOP5-103



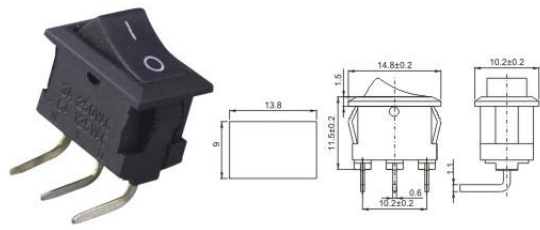
A-TOP5-103 ON-OFF-ON

## A-TOP5-102



A-TOP5-102 ON-ON

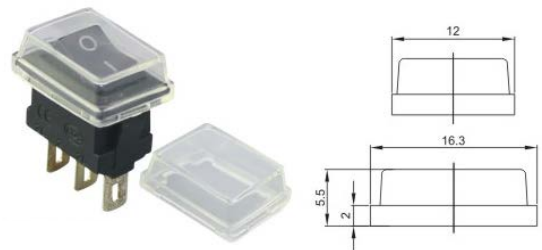
## A-TOP5-101L / 102L



A-TOP5-101 L ON-OFF 2P  
 A-TOP5-102 L ON-ON 3P

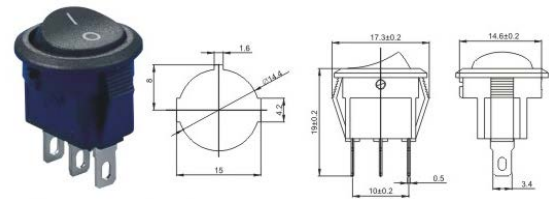
14  
 \*  
 23

## A-TOP5-1510



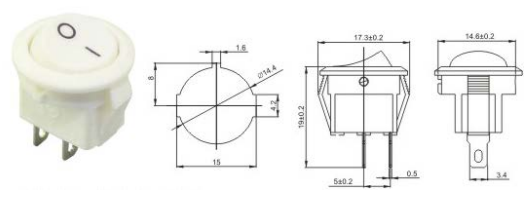
A-TOP5-1510

## A-TOP5-2-102



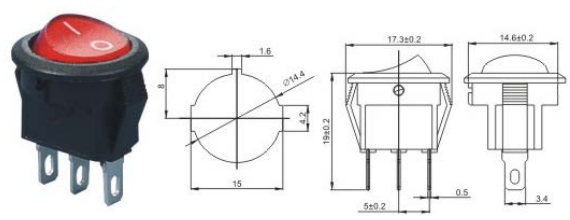
A-TOP5-2-102 ON-ON

## A-TOP5-2-101



A-TOP5-2-101 ON-OFF

## A-TOP5-2-101N



A-TOP5-2-101N ON-OFF





# CONNECTOR MANUFACTURERS

Rating: 6A 125VAC ; 3A 250VAC  
 Contact Resistance: 35m Ω max  
 Insulation Resistance: 500VDC 100M Ω min

Dielectric Strength: 1500VAC, 1 Minute  
 Operating Temperature: -25°C~ +85°C  
 Electrical Life: ≥ 10,000 Cycles

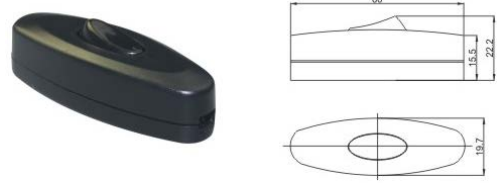
**TOPTek**<sup>®</sup>  
 HARDWARE ELECTRONIC MANUFACTURER

www.toptek-co.com

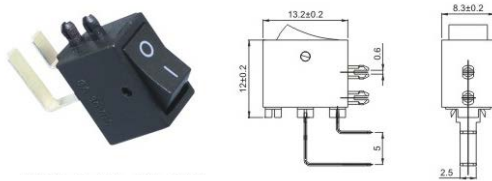
A-TOP5-16



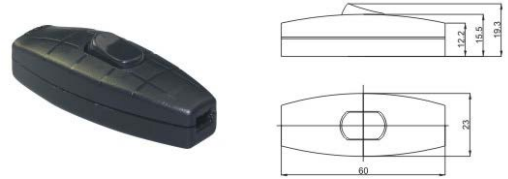
A-TOP5-8S.304



A-TOP5-3-101

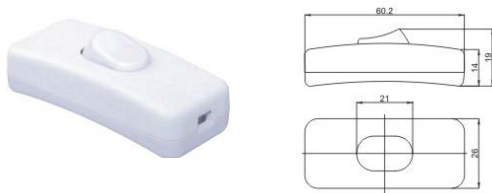


A-TOP5-305

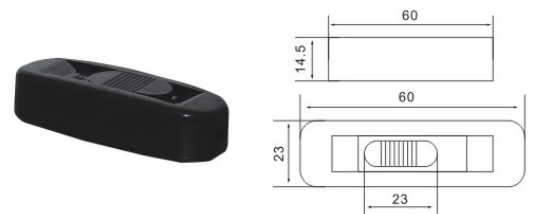


A-TOP5-3-101 ON-OFF

A-TOP5-303-1 SPST / 2 DPST

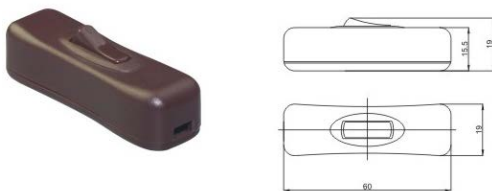


A-TOP5-322



A-TOP5-303-1 SPST  
 A-TOP5-303-2 DPST

A-TOP5-304



A-TOP5-307

