

Micro Switch

TOPTEK®

HARDWARE ELECTRONIC MANUFACTURER



www.toptek-co.com

TOPTEK srl
10015 - IVREA (TO) - ITALY
tel. +39 0125 251 211 - fax +39 0341 367 607
info@toptek-co.com

CONNECTOR MANUFACTURERS

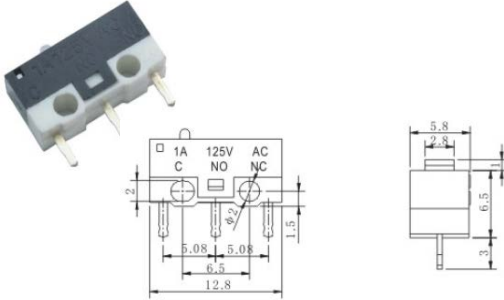
Rating: (MI-) 1A~3A 125/250VAC / (ME-) 5A~10A 125/250VAC
 Contact Resistance: $\leq 50m\ \Omega$
 Insulation Resistance: $\geq 100M\ \Omega$ (500VDC)
 Dielectric Strength: (MI-) 600VAC, 1 Minute / (ME-) 1000VAC, 1 Minute

Operating Temperature: $-25^{\circ}C \sim +85^{\circ}C$
 Ambient Humidity Used: $< 85\% RH$
 Electrical Life: $\geq 10,000$ Cycles
 Mechanical Life: $\geq 100,000$ Cycles

TOPTEK®
 HARDWARE ELECTRONIC MANUFACTURER

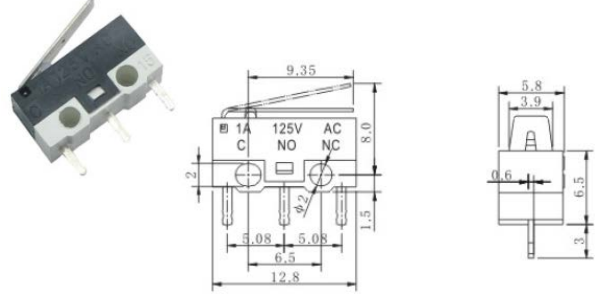
www.toptek-co.com

MI-10



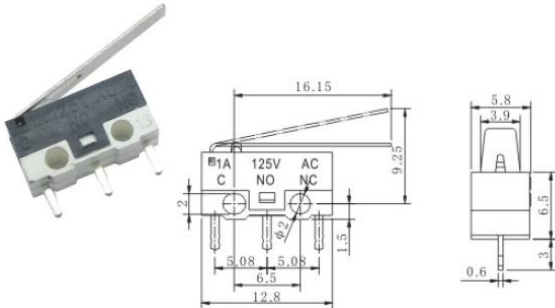
MI10-Z0P075 1A 125VAC MI10-DZ0P075 2A 125VAC
 MI10-CZ0P075 3A 250VAC MI10-EZ0P075 3A 125VAC

MI-11



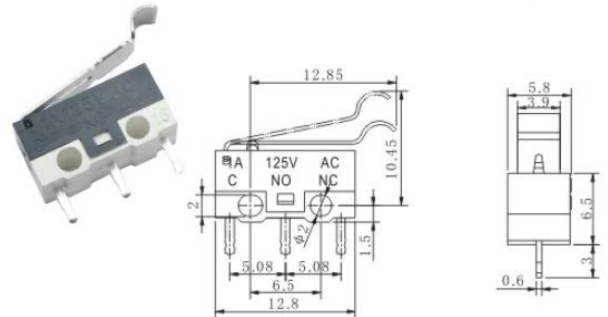
MI11-Z1P075 1A 125VAC MI11-DZ1P075 2A 125VAC
 MI11-CZ1P075 3A 250VAC MI11-EZ1P075 3A 125VAC

MI-12



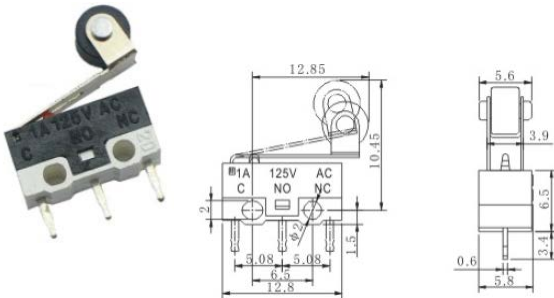
MI12-Z2P075 1A 125VAC MI12-DZ2P075 2A 125VAC
 MI12-CZ2P075 3A 250VAC MI12-EZ2P075 3A 125VAC

MI-13



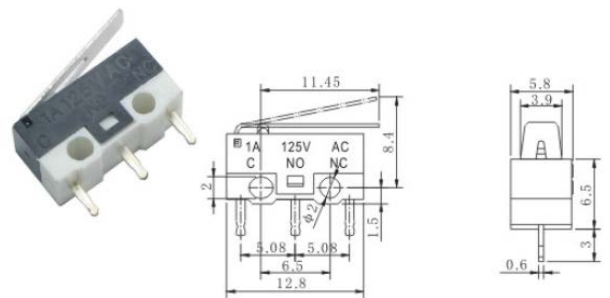
MI13-Z3P075 1A 125VAC MI13-DZ3P075 2A 125VAC
 MI13-CZ3P075 3A 250VAC MI13-EZ3P075 3A 125VAC

MI-14



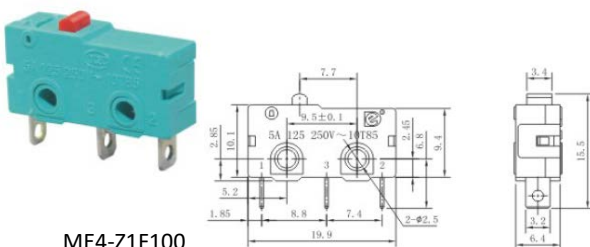
MI14-Z4P075 1A 125VAC MI14-DZ4P075 2A 125VAC
 MI14-CZ4P075 3A 250VAC MI14-EZ4P075 3A 125VAC

MI-15



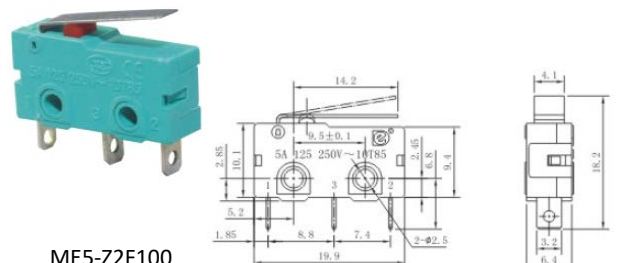
MI15-Z5P075 1A 125VAC MI15-DZ5P075 2A 125VAC
 MI15-CZ5P075 3A 250VAC MI15-EZ5P075 3A 125VAC

ME-4



ME4-Z1F100
 ME4-Z1F150
 ME4-Z1F200

ME-5



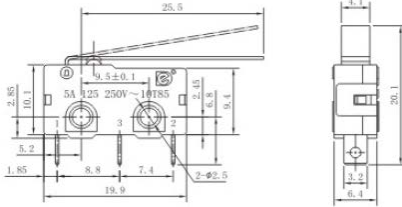
ME5-Z2F100
 ME5-Z2F150
 ME5-Z2F200

Rating : (ME-) 5A~10A 125/250VAC / (MA-) 16A 250VAC / 20A 125VAC
 Contact Resistance: (ME-) $\leq 50m \Omega$ / (MA-) $\leq 30m \Omega$
 Insulation Resistance: $\geq 100M \Omega$ (500VDC)
 Dielectric Strength: (ME-) 1000VAC, 1 Minute / (MA-) 1500VAC, 1 Minute

Operating Temperature: $-25^{\circ}C \sim +85^{\circ}C$
 Ambient Humidity Used: $< 85\% RH$
 Electrical Life: $\geq 10,000$ Cycles
 Mechanical Life: $\geq 100,000$ Cycles

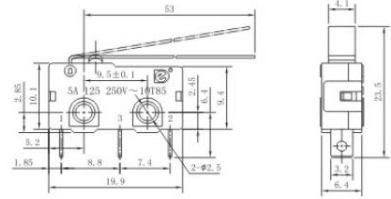
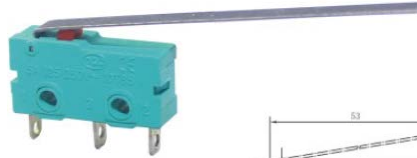


ME-6



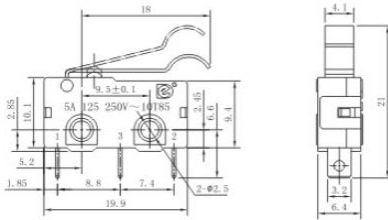
ME6-Z3F100
 ME6-Z3F150
 ME6-Z3F200

ME-7



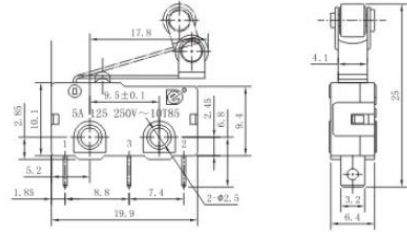
ME7-ZDF100
 ME7-ZDF150
 ME7-ZDF200

ME-8



ME8-Z4F100
 ME8-Z4F150
 ME8-Z4F200

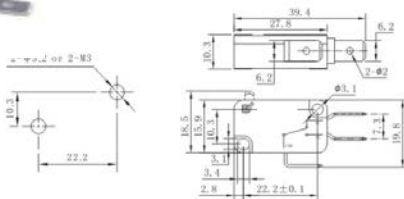
ME-9



ME9-Z5F100
 ME9-Z5F150
 ME9-Z5F200

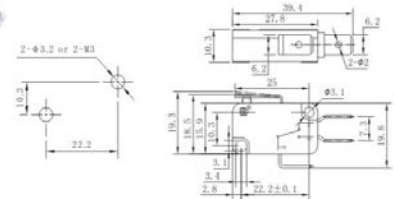
14
 *
 35

MA-1



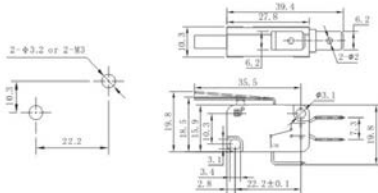
MA1-103-Z1A100 MA1-103-Z1A200
 MA1-103-Z1A150 MA1-103-Z1A300

MA-2



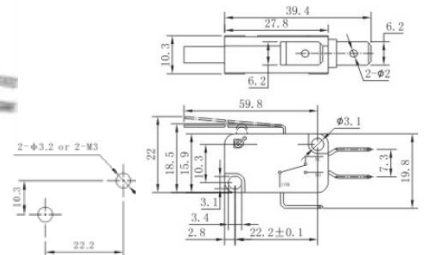
MA2-103-Z2A100 MA2-103-Z2A200
 MA2-103-Z2A150 MA2-103-Z2A300

MA-3



MA3-103-Z3A100 MA3-103-Z3A200
 MA3-103-Z3A150 MA3-103-Z3A300

MA-4



MA4-103-Z4A100 MA4-103-Z4A200
 MA4-103-Z4A150 MA4-103-Z4A300



