

PIN HEADER 1.0mm

Pin Header 1.0mm 2 Row H=1.0/1.5mm Stack Straight Type

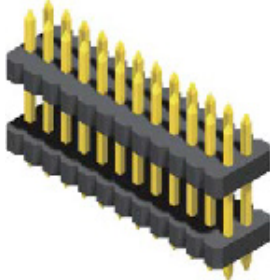


Specifications

Current Rate: 1 AMP | Insulation Resistance: 1000MΩ | Max. Contact Resistance: 20mΩ |
Max. Dielectric Voltage: 500V AC for one minute | Operation Temperature: -40°C to +105°C

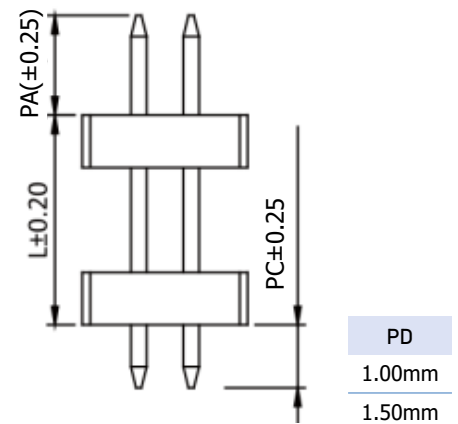
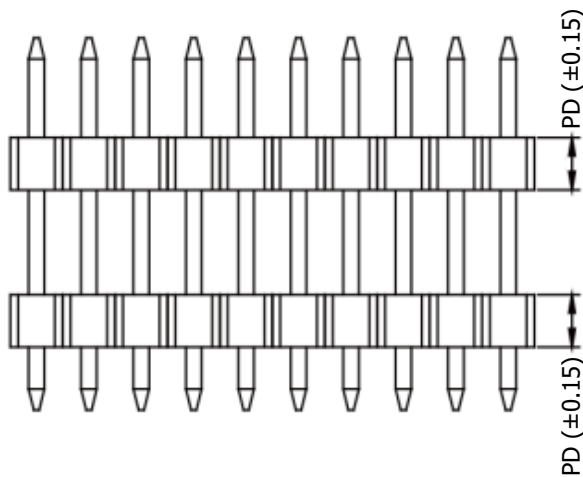
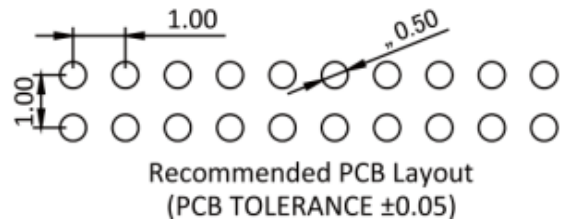
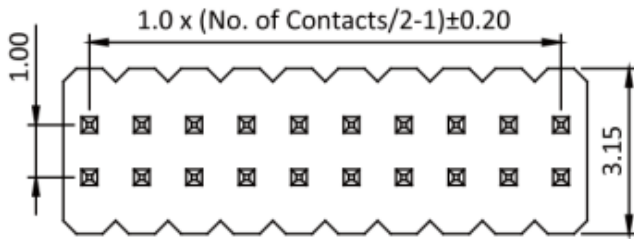
Material

Insulator: Polyester, UL 94V-0 | Standard: Nylon 6T | Terminal: Copper Alloy | Plating: Gold Plated



ORDER INFORMATION

P	H	5	D	1	0	-	2	X	X	X	N	X	X	S	PA/PC	X
		PD				No. of Pins Pr Row		Insulator Material Option				Contact Plating		PA/PC= Pin Length		Packing
		10= 1.0mm 15= 1.5mm				2x40		A= BK-PBT B= BK-PA66 C= BK-PA6T D= BK-PA46 F= BK-LCP				G0= Gold Flash G2= 5U" Gold G3= 10U" Gold G4= 15U" Gold G5= 30U" Gold S0= Gold Flash/ Tin SN= Tin		0= PE Bag A= Tray T= Tube P= Tube+Cap R= Reel+Cap		



ITEM	PA	PC
Standard	1.90	1.20
Alternate		