

▶ TOGGLE SWITCH

Toggle Switch

TOPTTEK®
HARDWARE ELECTRONIC COMPONENTS

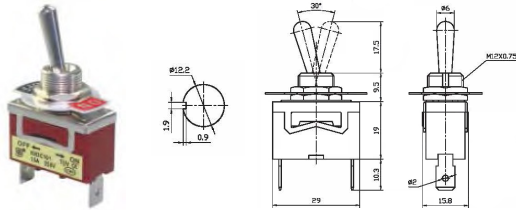


Specifications

Rating: 10A 125V AC; 6A 250V AC; 15A 125V AC; 10A 250V AC / 20A 125V AC; 15A 250V AC | Contact Resistance: 50mΩ Max |
Insulation Resistance: 500VDC 1000MΩ min | Dielectric Strength: 1500V AC for one minute | Operation Temperature: -25°C to +85°C
| Electrical Life: ≥ 10,000 Cycles

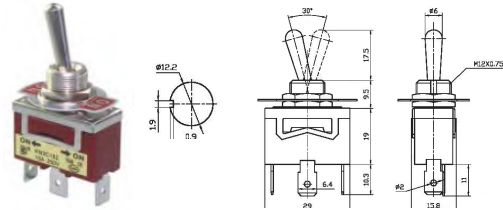
www.toptek-co.com

T3C-101-111-P



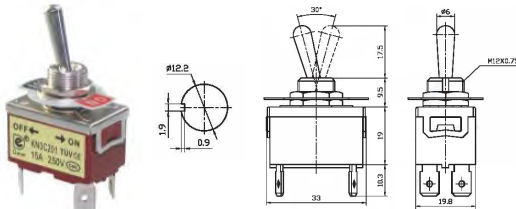
T3C-101-P ON-OFF
T3C-111-P OFF-(ON)
SPST 2P

T3C-102-112-103-113-123-P



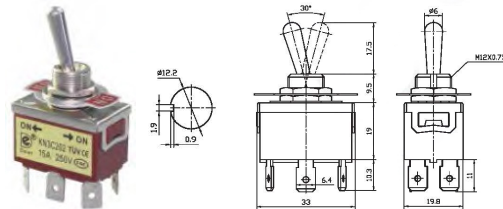
T3C-102-P ON-ON T3C-113 ON-OFF-(ON)-P
T3C-112-P ON-(ON) T3C-123 (ON)-OFF-(ON)-P
T3C-103-P ON-OFF-ON SPDT 3P

T3C-201-211-P



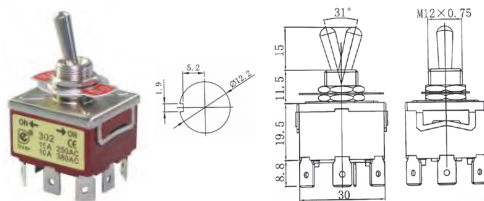
T3C-201-P ON-OFF
T3C-211-P OFF-(ON)
SPST 4P

T3C-202-212-203-213-223-P



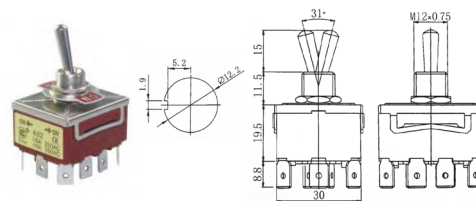
T3C-202-P ON-ON T3C-213-P ON-OFF-(ON)
T3C-212-P ON-(ON) T3C-223-P (ON)-OFF-(ON)
T3C-203-P ON-OFF-ON DPDT 6P

T3C-302-303-P



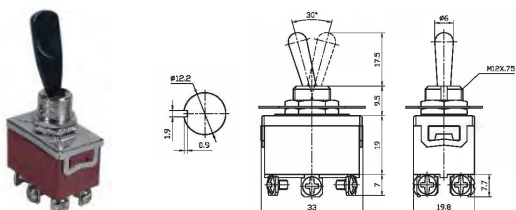
T3C-302-P ON-ON
T3C-303-P ON-OFF-ON
3PDT 9P

T3C-402-403-P



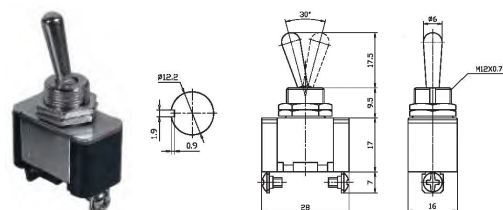
T3C-402-P ON-ON
T3C-403-P ON-OFF-ON
4PDT 12P

T3C-202-212-203-213-223-E



T3C-202-E ON-ON T3C-213-E ON-OFF-(ON)
T3C-212-E ON-(ON) T3C-223-E (ON)-OFF-(ON)
T3C-203-E ON-OFF-ON DPDT 6P

T3A-101



T3A-101 ON-OFF
SPST 2P