

▶ TOGGLE SWITCH

Toggle Switch

TOPTTEK®

HARDWARE ELECTRONIC COMPONENTS



RoHS
2002/95/EC

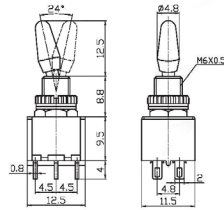
Specifications

Rating: 6A 125V AC | 3A 250V AC | Contact Resistance: 20mΩ Max | Insulation Resistance: 500VDC 1000M Ω min | Dielectric Strength: 1500V AC for one minute | Operation Temperature: -25°C to +85°C | Electrical Life: ≥10,000 Cycles



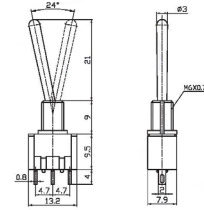
www.toptek-co.com

TP-2-D1



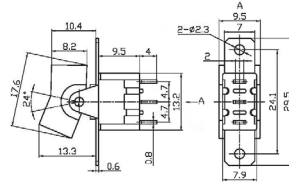
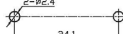
TP-2-D1 ON-ON
TP-203-D1 ON-OFF-ON
DPDT 6P

TP-102-112-B1



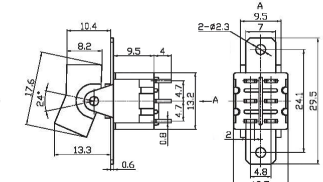
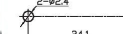
TP-102-B1 ON-ON
TP-112-B1 ON-(ON)
SPDT 3P

TPA-102-112-103-113-123-A1



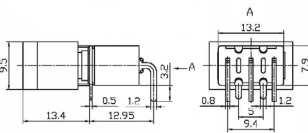
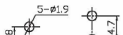
TPA-102-A1 ON-ON TPA-113-A1 ON-OFF-(ON)
TPA-112-A1 ON-(ON) TPA-123-A1 (ON)-OFF-(ON)
TPA-103-A1 ON-OFF-ON SPDT 3P

TPA-202-212-203-213-223-A1



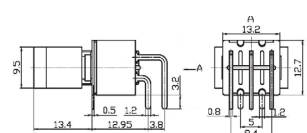
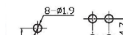
TPA-202-A1 ON-ON TPA-213-A1 ON-OFF-(ON)
TPA-212-A1 ON-(ON) TPA-223-A1 (ON)-OFF-(ON)
TPA-203-A1 ON-OFF-ON DPDT 6P

TPA-102-112-103-113-123-A3



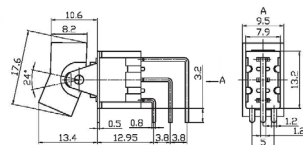
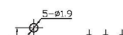
TPA-102-A3 ON-ON TPA-113-A3 ON-OFF-(ON)
TPA-112-A3 ON-(ON) TPA-123-A3 (ON)-OFF-(ON)
TPA-103-A3 ON-OFF-ON SPDT 3P

TPA-202-212-203-213-223-A3



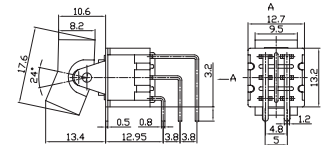
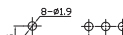
TPA-202-A3 ON-ON TPA-213-A3 ON-OFF-(ON)
TPA-212-A3 ON-(ON) TPA-223-A3 (ON)-OFF-(ON)
TPA-203-A3 ON-OFF-ON DPDT 6P

TPA-102-112-103-113-123-A4



TPA-102-A4 ON-ON TPA-113-A4 ON-OFF-(ON)
TPA-112-A4 ON-(ON) TPA-123-A4 (ON)-OFF-(ON)
TPA-103-A4 ON-OFF-ON SPDT 3P

TPA-202-212-203-213-223-A4



TPA-202-A4 ON-ON TPA-213-A4 ON-OFF-(ON)
TPA-212-A4 ON-(ON) TPA-223-A4 (ON)-OFF-(ON)
TPA-203-A4 ON-OFF-ON DPDT 6P