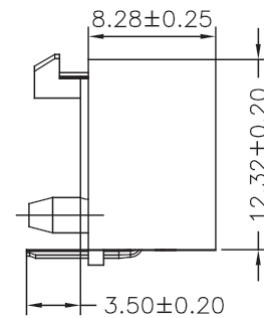
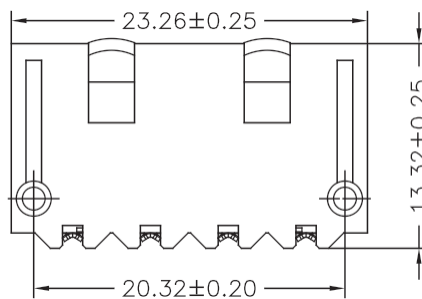
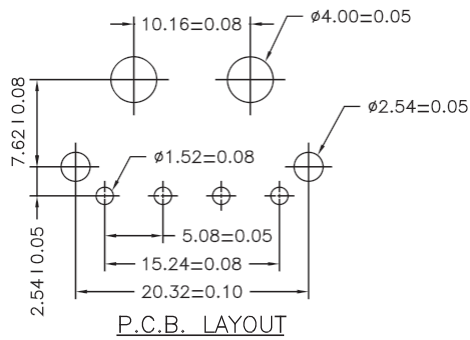
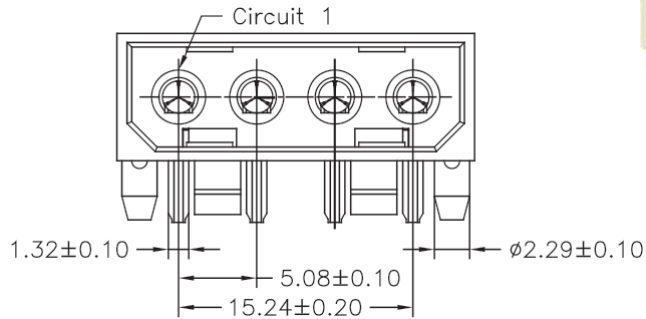
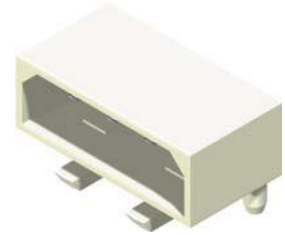


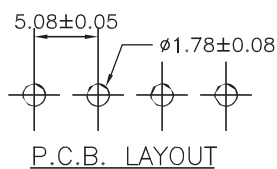
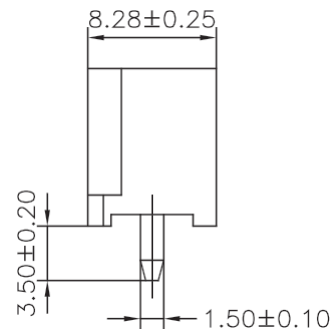
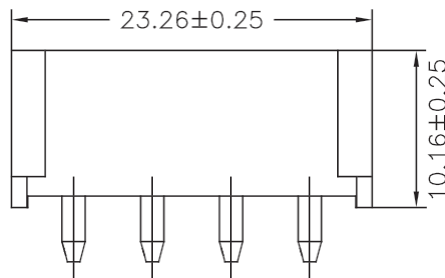
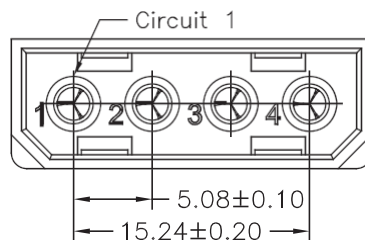
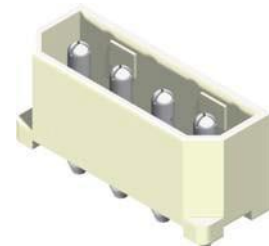
## 5.08mm Wafer Right Angle / Straight Type

### Specifications

Current Rating: 10A AC,DC  
Voltage Rating: 250V AC,DC  
Temperature Range: -25°C to +85°C  
Contact Resistance: 10mΩ Max  
Insulation Resistance: 1000MΩ Min  
Withstanding Voltage: 1500V AC/minute  
Terminal: Brass / Tin Plated  
Material: Nylon 66,UL94V-2



**Part No.:5082R-04TW-L**



**Part No.:5082S-04TW-L**