

▶ TOGGLE SWITCH

Toggle Switch

TOPTTEK®
HARDWARE ELECTRONIC COMPONENTS



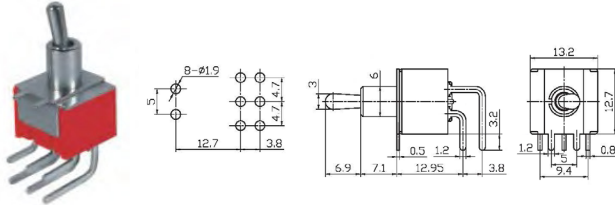
www.topttek-co.com

Specifications

Rating: 6A 125V AC | 3A 250V AC | Contact Resistance: 20mΩ Max | Insulation Resistance: 500VDC 1000M Ω min | Dielectric Strength: 1500V AC for one minute | Operation Temperature: -25°C to +85°C | Electrical Life: ≥10,000 Cycles

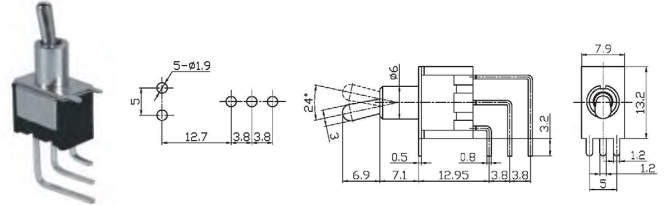


TP-202-212-203-213-223-C3



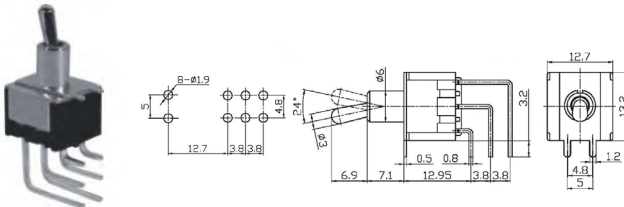
TP-202-C3 ON-ON TP-213-C3 ON-OFF-(ON)
TP-212-C3 ON-(ON) TP-223-C3 (ON)-OFF-(ON)
TP-203-C3 ON-OFF-ON DPDT 6P

TP-102-112-103-113-123-C4



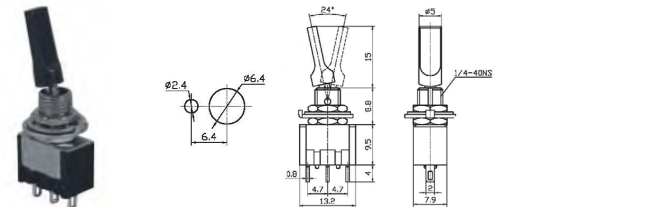
TP-102-C4 ON-ON TP-113-C4 ON-OFF-(ON)
TP-112-C4 ON-(ON) TP-123-C4 (ON)-OFF-(ON)
TP-103-C4 ON-OFF-ON SPDT 3P

TP-202-212-203-213-223-C4



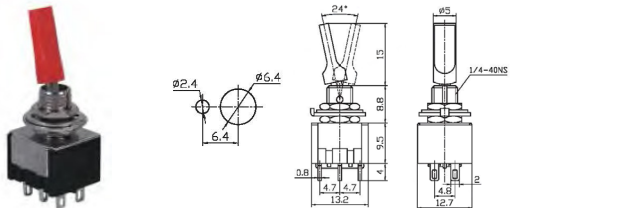
TP-202-C4 ON-ON TP-213-C4 ON-OFF-(ON)
TP-212-C4 ON-(ON) TP-223-C4 (ON)-OFF-(ON)
TP-203-C4 ON-OFF-ON DPDT 6P

TP-102-112-103-113-123-E1



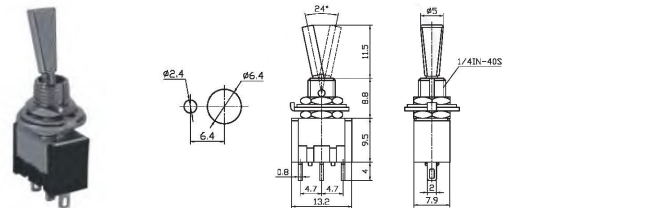
TP-102-E1 ON-ON TP-113-E1 ON-OFF-(ON)
TP-112-E1 ON-(ON) TP-123-E1 (ON)-OFF-(ON)
TP-103-E1 ON-OFF-ON SPDT 3P (Plastic flat lever)

TP-202-212-203-213-223-E1



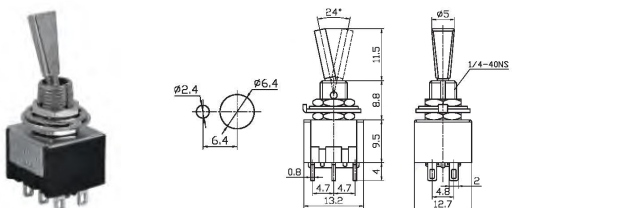
TP-202-E1 ON-ON TP-213-E1 ON-OFF-(ON)
TP-212-E1 ON-(ON) TP-223-E1 (ON)-OFF-(ON)
TP-203-E1 ON-OFF-ON DPDT 6P (Plastic flat lever)

TP-102-112-103-113-123-F1



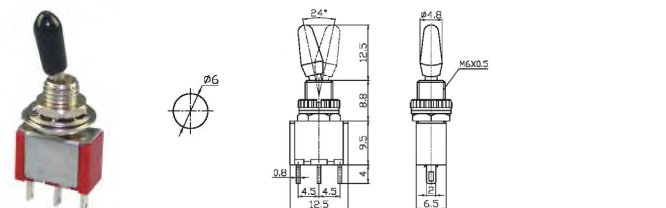
TP-102-F1 ON-ON TP-113-F1 ON-OFF-(ON)
TP-112-F1 ON-(ON) TP-123-F1 (ON)-OFF-(ON)
TP-103-F1 ON-OFF-ON SPDT 3P (Metal flat lever)

TP-202-212-203-213-223-F1



TP-202-F1 ON-ON TP-213-F1 ON-OFF-(ON)
TP-212-F1 ON-(ON) TP-223-F1 (ON)-OFF-(ON)
TP-203-F1 ON-OFF-ON DPDT 6P (Metal flat lever)

TP-1-D1



TP-1-D1 ON-ON
TP-103-D1 ON-OFF-ON
SPDT 3P