

# TACT SWITCH

12X12 straight tact switch with pilot

**TOPTTEK**<sup>®</sup>  
HARDWARE ELECTRONIC COMPONENTS



## SPECIFICATION MODEL: SWTA2201-F-X-XXX-X

1	Operating Temperature	-30°C to +85°C
2	Rating	50mA, 12V DC
3	Insulation Resistance	100MΩ min. 100V DC
4	Dielectric Strength	250V AC for 1 min.
5	Contact Resistance	100mΩ max.
6	Life	100.000 or 200.000 Cycles
7	Travel	0.35 ± 0.1mm
8	Operating Force	J:160 C:250

www.toptek-co.com



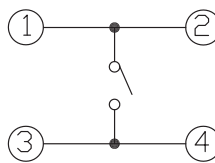
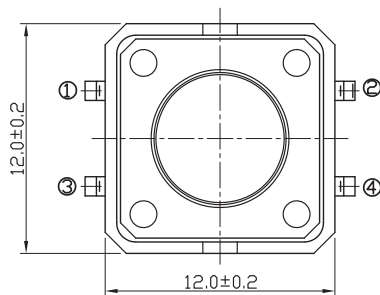
## ORDER INFORMATION

S W T A 2 2 0 1 - F - X X X - X - X

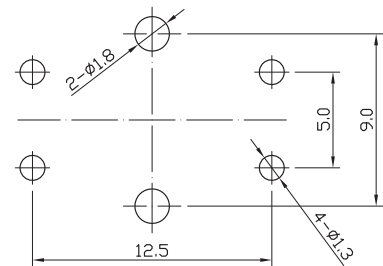
Switch Height  
043= 4.3mm  
050= 5.0mm  
060= 6.0mm  
070= 7.0mm

Stem Color  
B= Black  
R= Red  
Y= Yellow  
N= Brown

Operating Force  
J= 160gf  
C= 250gf



CIRCUIT DIAGRAM



P.C.B LAND DIMENSION

