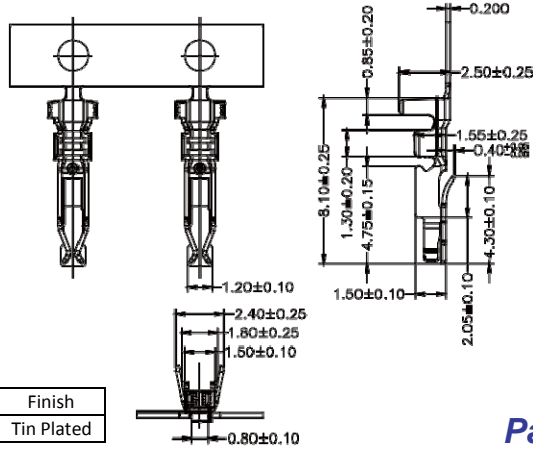


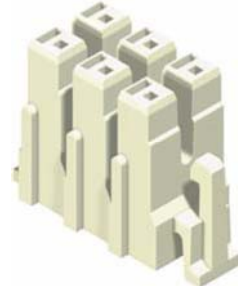
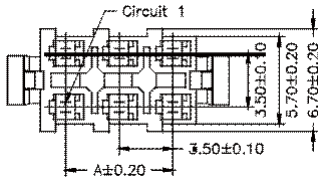
### 3.5mm LCD Terminal / Housing

Specifications  
Current Rating: 1A AC,DC  
Voltage Rating: 1400V AC,DC  
Temperature Range: -25°C to +85°C  
Contact Resistance: 10mΩ Max  
Insulation Resistance: 1000MΩ Min  
Withstanding Voltage: 3800V AC/minute  
Material: Nylon 66, UL94V-0

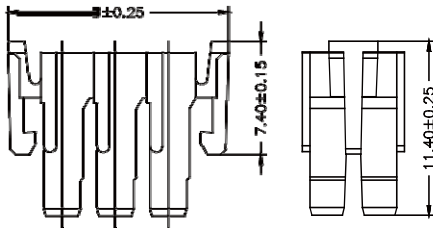


Wire Range	Insulation O.D.	Material	Finish
#24-#28	1.60mm(Max)	Phosphor Bronze	Tin Plated

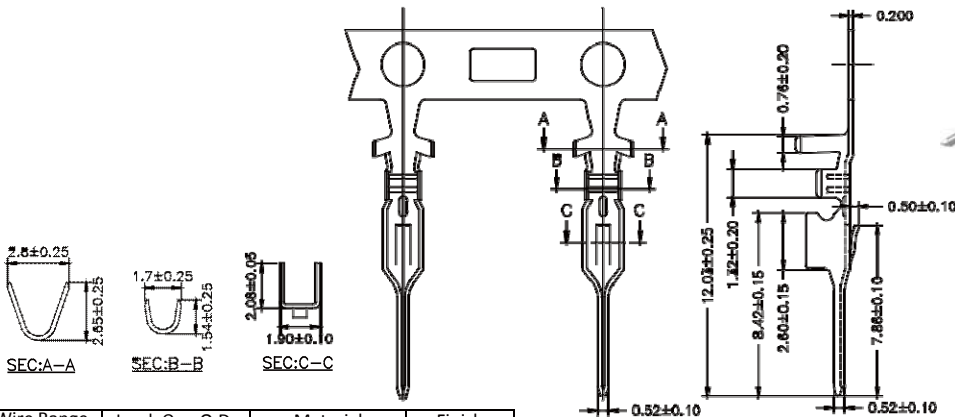
Part No.:LCD-2PFT-L



No. of Contacts	Dimensions	
	A	B
3	7.00	14.00
6	17.50	24.50

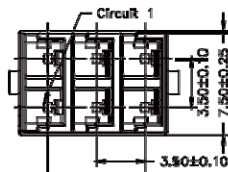


Part No.:LCDH-F2PXXW-L

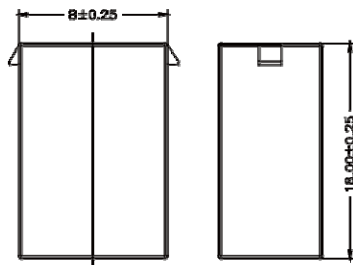


Wire Range	Insulation O.D.	Material	Finish
#24-#28	1.80mm(Max)	Phosphor Bronze	Tin Plated

Part No.:LCD-2PMT-L



No. of Contacts	Dimensions	
	A	B
3	7.00	10.70
6	17.50	21.20



Part No.:LCDH-M2PXXW-L