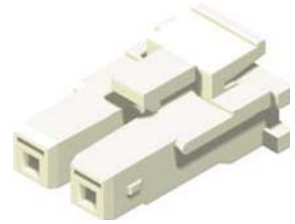
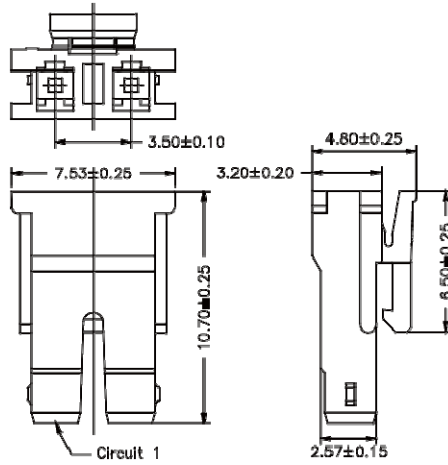


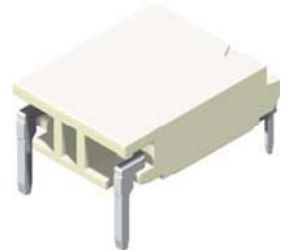
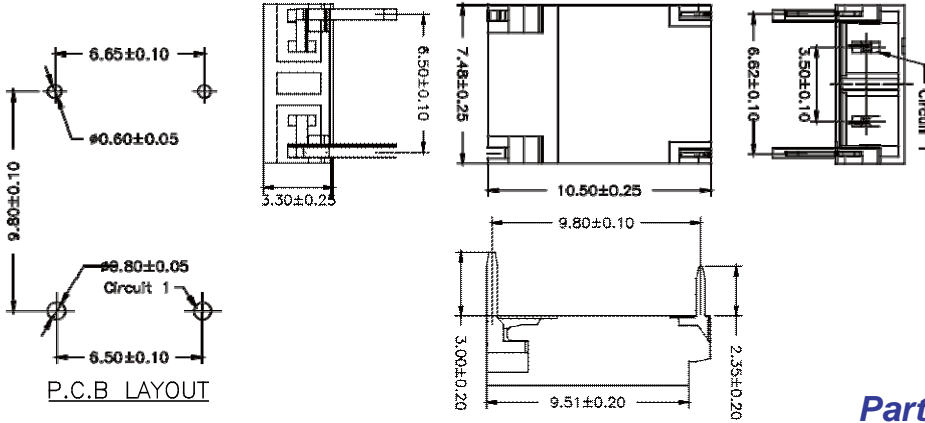
3.5mm LCD Housing / Wafer SMT R/A & DIP Type

Specifications

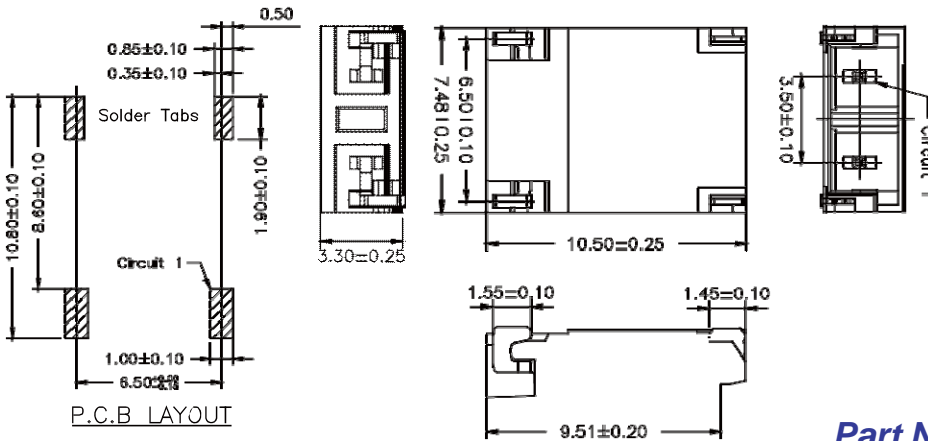
Current Rating: 1A AC,DC
Voltage Rating: 1400V AC,DC
Temperature Range: -20°C to +85°C
Contact Resistance: 10mΩ Max
Insulation Resistance: 1000MΩ Min
Withstanding Voltage: 3800V AC/minute
Terminal: Brass / Tin Plated
Solder Tabs: Brass / Tin Plated
Material: Housing:Nylon 66, UL94V-0
Wafer:Nylon 6T, UL94V-0



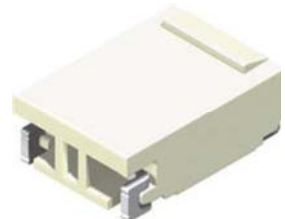
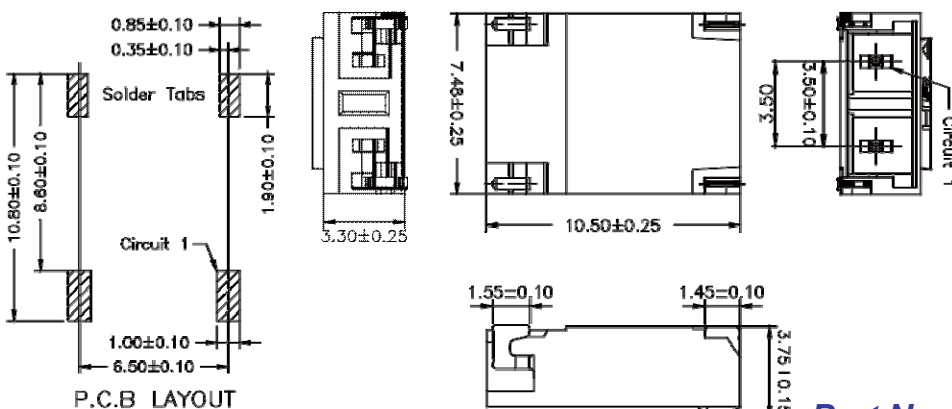
Part No.:LCDHA-2PW-L



Part No.:LCDR-2P2TW-U



Part No.:LCDMR-2P2TW-U



Part No.:LCDMRA-2P2TW-U