

▶ TERMINAL BLOCK

PCB Terminal block (linguetta)



TOPTTEK®

HARDWARE ELECTRONIC COMPONENTS



www.toptek-co.com

SPECIFICATION MODEL KF332N P.5.0 :

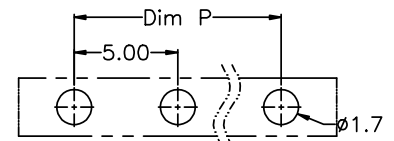
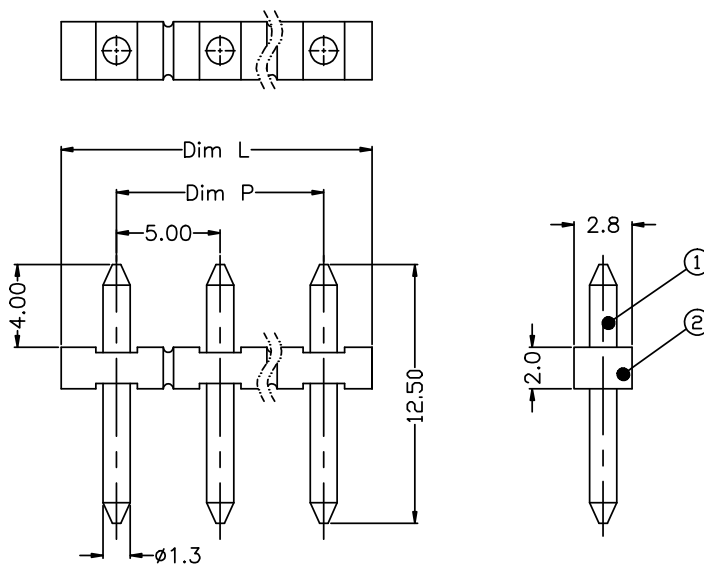
1	Pin Header Material	Brass, Tin plated
2	Housing Material	PA66, UL94V-0
3	Rated voltage	UL: 300V IEC: 250V
4	Rated Current	UL: 10A IEC: 12A
5	Insulation Resistance	500MΩ / DC500V
6	Withstanding Voltage	AC2000V / 1min
7	Operating Temperature	-40°C.....+105°C
8	Soldering Temperature	250°C ± 5 / 5sec
9	Contact Resistance	20mΩ (max)



▶ ORDER INFORMATION

K F 3 3 2 N - 5.0 X X P

Pitch:mm
No.of Poles
2~24P



P.C.B. LAYUOT

N=Number of Poles
Dim P=(N-1)x5.00
Dim L=Nx5.00

Poles	Dim	Dim P	Dim L
2-6P		±0.10	±0.15
7-12P		±0.20	±0.20
13-18P		±0.25	±0.30
19-24P		±0.30	±0.40