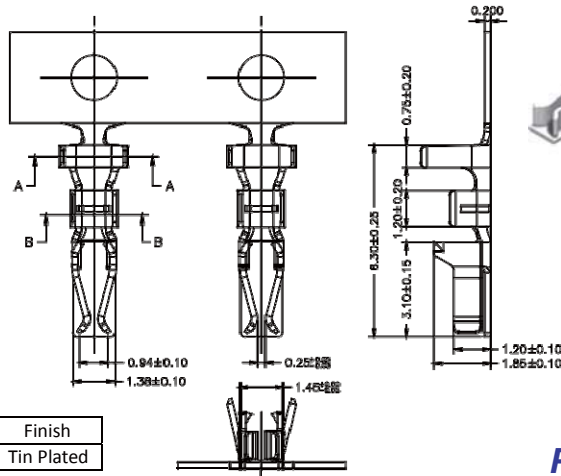
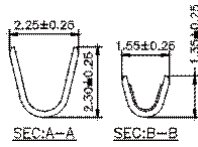


## 2.0mm Terminal / Housing / Wafer R/A / Straight / SMT Type

Specifications  
 Current Rating: 2A AC,DC  
 Voltage Rating: 250V AC,DC  
 Temperature Range: -25°C to +85°C  
 Contact Resistance: 30mΩ Max  
 Insulation Resistance: 1000MΩ Min  
 Withstanding Voltage: 800V AC/minute  
 Terminal: Brass / Gold & Tin Plated  
 Material: Housing: Nylon 66, UL94V-0  
 Wafer: 2211R/S: Nylon 66, UL94V-0  
 2211MS: Nylon 6T, UL94V-0

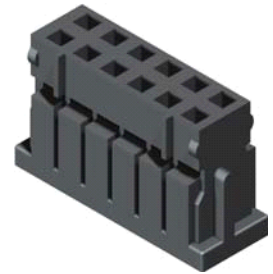
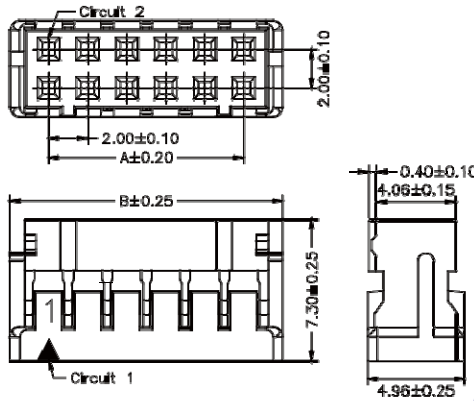


Wire Range	Insulation O.D.	Material	Finish
#22-#30	1.45mm(Max)	Phosphor Bronze	Tin Plated

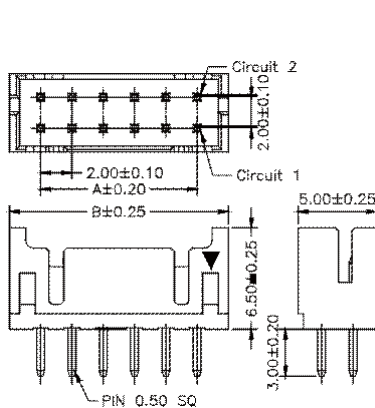
**Part No.:2211-T-L**

**Housing Wafer Terminal**

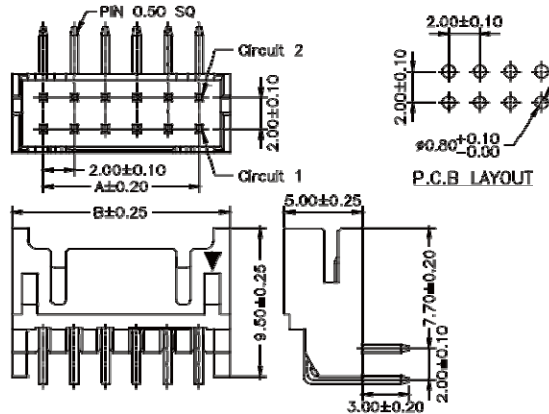
No. of Contacts	Dimensions		No. of Contacts	Dimensions	
	A	B		A	B
2x2	2.00	6.00	2x12	22.00	26.00
2x3	4.00	8.00	2x13	24.00	28.00
2x4	6.00	10.00	2x14	26.00	30.00
2x5	8.00	12.00	2x15	28.00	32.00
2x6	10.00	14.00	2x16	30.00	34.00
2x7	12.00	16.00	2x17	32.00	36.00
2x8	14.00	18.00	2x18	34.00	38.00
2x9	16.00	20.00	2x19	36.00	40.00
2x10	18.00	22.00	2x20	38.00	42.00
2x11	20.00	24.00			



**Part No.:2211H-2XXB-L**

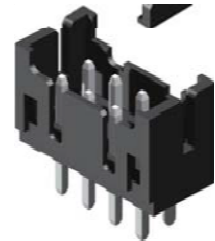


**2211S-2XXTB-L**

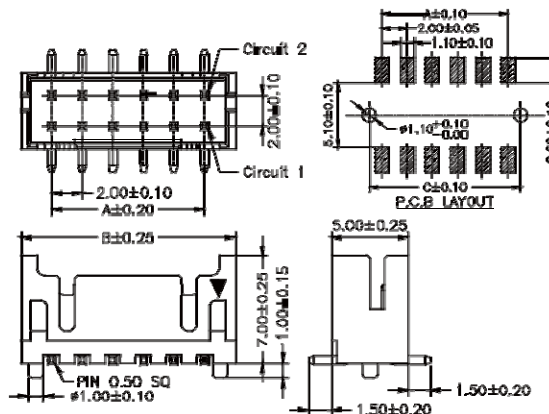


**2211R-2XXTB-L**

**Part No.:2211R/S-2XXTB-L**



No. of Contacts	Dimensions			No. of Contacts	Dimensions		
	A	B	C		A	B	C
2x2	2.00	6.00	4.00	2x12	22.00	26.00	24.00
2x3	4.00	8.00	6.00	2x13	24.00	28.00	26.00
2x4	6.00	10.00	8.00	2x14	26.00	30.00	28.00
2x5	8.00	12.00	10.00	2x15	28.00	32.00	30.00
2x6	10.00	14.00	12.00	2x16	30.00	34.00	32.00
2x7	12.00	16.00	14.00	2x17	32.00	36.00	34.00
2x8	14.00	18.00	16.00	2x18	34.00	38.00	36.00
2x9	16.00	20.00	18.00	2x19	36.00	40.00	38.00
2x10	18.00	22.00	20.00	2x20	38.00	42.00	40.00
2x11	20.00	24.00	22.00				



**Part No.:2211MS-2XXGW-U**

