

Toggle Switch



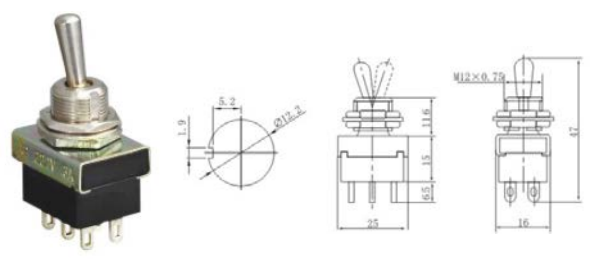
Rating: 10A 125VAC; 6A 250VAC / 15A 125VAC; 10A 250VAC / 20A 125VAC; 15A 250VAC
 Contact Resistance: 50m Ω max
 Insulation Resistance: 500VDC 1000M Ω min

Dielectric Strength: 1500VAC, 1 Minute
 Operating Temperature: -25°C~ +85°C
 Electrical Life: ≥ 10,000 Cycles

TOPTek
 HARDWARE ELECTRONIC MANUFACTURER

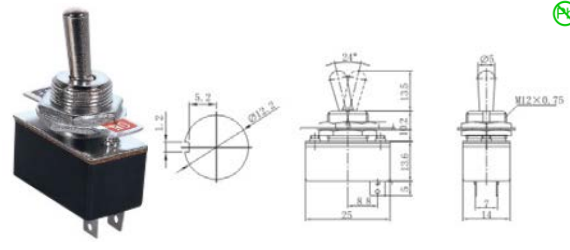


T3-3A



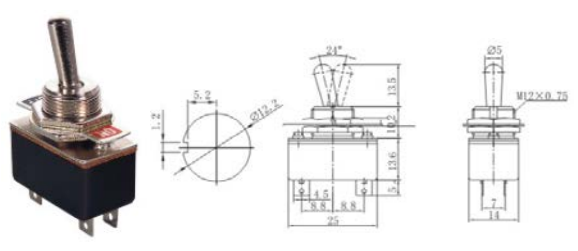
T3-3A ON-ON
 DPDT 6P
 6A 125VAC; 3A 250VAC

T3-1



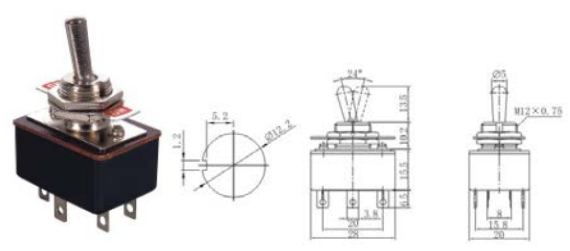
T3-1 ON-OFF
 SPST 2P
 4A 125VAC; 2A 250VAC

T3-2



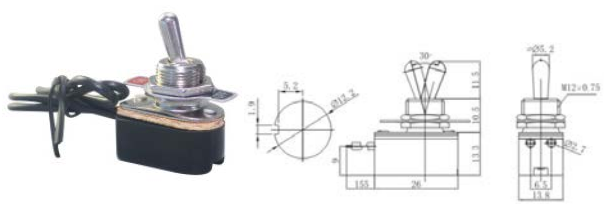
T3-2 ON-ON
 SPDT 4P
 4A 125VAC; 2A 250VAC

T3-3



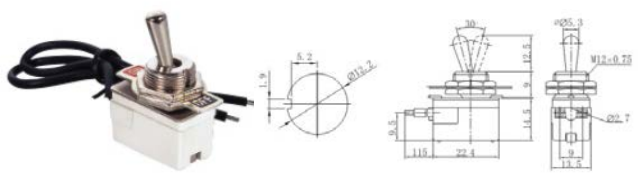
T3-3 ON-ON
 DPDT 6P
 5A 125VAC; 3A 250VAC

TS-1



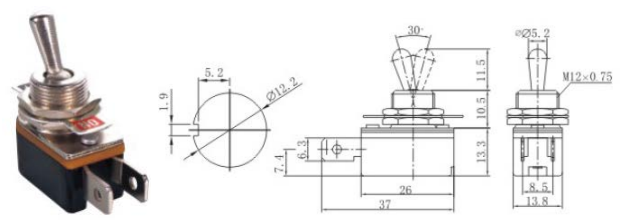
TS-1 ON-OFF
 SPST 2P
 6A 125VAC; 3A 250VAC; 10A 12VDC

TS-2



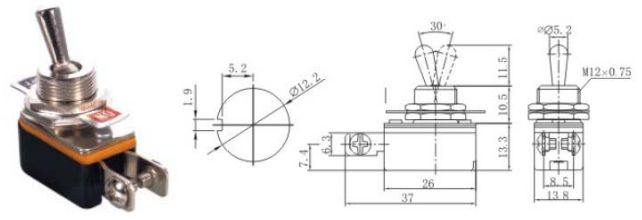
TS-2 ON-OFF
 SPST 2P
 6A 125VAC; 3A 250VAC; 10A 12VDC

TH-1



TH-1 ON-OFF
 SPST 2P
 6A 125VAC; 3A 250VAC; 10A 12VDC

TH-1S



TH-1 ON-OFF
 SPST 2P (Screw Terminals)
 6A 125VAC; 3A 250VAC; 10A 12VDC

14
 *
 33