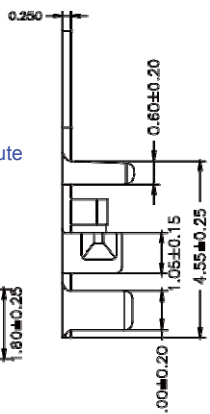
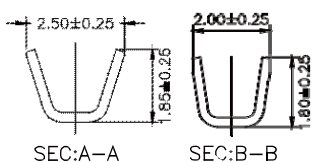


2.0mm Terminal / Housing / Wafer R/A / Straight Type

Specifications

Current Rating: 4A AC,DC
Voltage Rating: 125V AC,DC
Temperature Range: -25°C to +85°C
Contact Resistance: 10mΩ Max
Insulation Resistance: 1000MΩ Min
Withstanding Voltage: 1000V AC/minute
Terminal: Brass / Tin Plated
Material: Nylon 66, UL94V-0

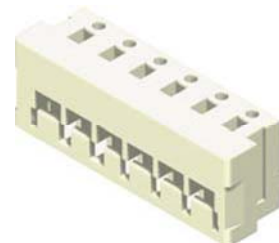
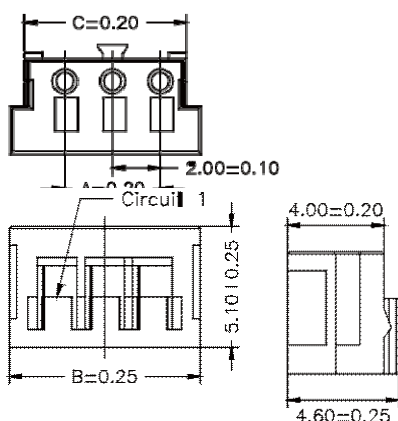


Wire Range	Insulation O.D.	Material	Finish
#22-#26	1.50mm(Max)	Phosphor Bronze	Tin Plated

SEC:C-C SEC:D-D

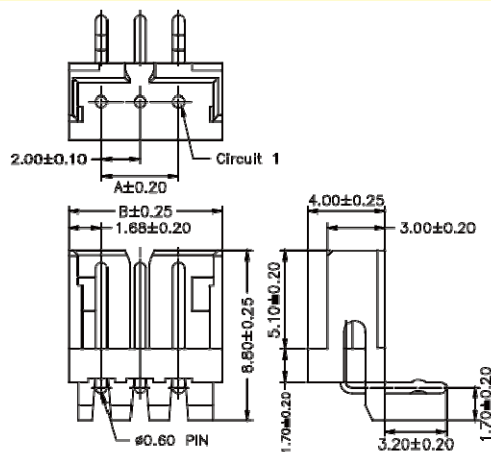
Part No.:2006-T-L

No. of Contacts	Dimensions		
	A	B	C
2	2.00	6.00	4.80
3	4.00	8.00	6.80
4	6.00	10.00	8.80
5	8.00	12.00	10.80
6	10.00	14.00	12.80
7	12.00	16.00	14.80
8	14.00	18.00	16.80
9	16.00	20.00	18.80
10	18.00	22.00	20.80
11	20.00	24.00	22.80
12	22.00	26.00	24.80
13	24.00	28.00	26.80
14	26.00	30.00	28.80
15	28.00	32.00	30.80

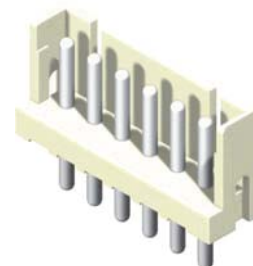
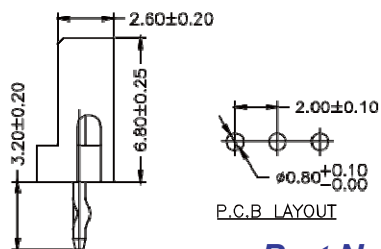


Part No.:2006H-XXW-L

No. of Contacts	Dimensions	
	A	B
2	2.00	5.96
3	4.00	7.96
4	6.00	9.96
5	8.00	11.96
6	10.00	13.96
7	12.00	15.96
8	14.00	17.96
9	16.00	19.96
10	18.00	21.96
11	20.00	23.96
12	22.00	25.96
13	24.00	27.96
14	26.00	29.96
15	28.00	31.96



Part No.:2006R-XXTW-L



Part No.:2006S-XXTW-L