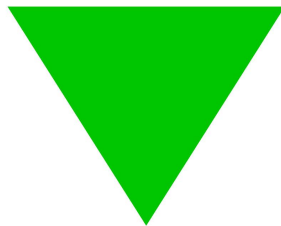


Board to Board Connectors

TOPTEK®

HARDWARE ELECTRONIC MANUFACTURER



www.toptek-co.com

TOPTEK srl
10015 - IVREA (TO) - ITALY
tel. +39 0125 251 211 - fax +39 0341 367 607
info@toptek-co.com

5BB051A16M



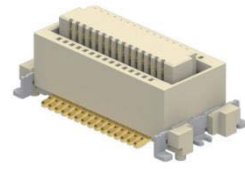
Pitch: 0.5 mm
Male H= 1.55mm
No. Of Contacts (10, 20, 60, 80)
RoHS + LCP

5BB051A09F



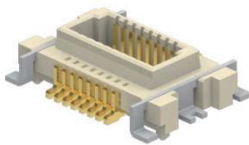
Pitch: 0.5 mm
Female H= 0.90mm
No. Of Contacts (20, 30, 60, 80)
RoHS + LCP

5BB052A36M



Pitch: 0.50 mm
Male H= 3.55mm
No. Of Contacts (20, 30, 40, 60, 80)
RoHS + LCP

5BB052A14F



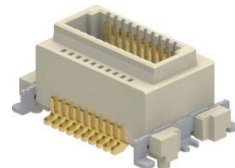
Pitch: 0.50 mm
Female H= 1.4mm
No. Of Contacts (10, 40, 60)
RoHS + LCP

5BB053A21M



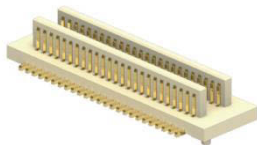
Pitch: 0.50 mm
Male H= 2.05mm
No. Of Contacts (80)
RoHS + LCP

5BB053A34F



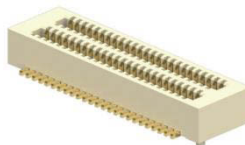
Pitch: 0.50 mm
Female H= 3.4mm
No. Of Contacts (20, 30, 80)
RoHS + LCP

5BB054AXXM



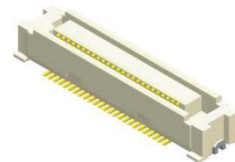
Pitch: 0.50 mm
Male H= 0.8/1.0/1.5/2.00mm
No. Of Contacts (10 ~ 100)
RoHS + Nylon 9T

5BB054AXXF



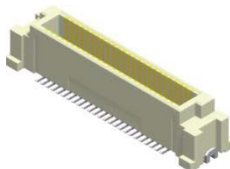
Pitch: 0.50 mm
Female H= 2.2/2.7/3.0/4.0/4.5mm
No. Of Contacts (10 ~ 100)
RoHS + Nylon 9T

5BB061D40M



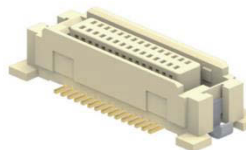
Pitch: 0.635 mm
Male H= 4.0mm
No. Of Contacts (20, 30, 40, 50)
RoHS + LCP

5BB061DXXF



Pitch: 0.635 mm
Female H= 4.0/5.0mm
No. Of Contacts (20, 30, 40, 50)
RoHS + LCP

5BB062CXXM

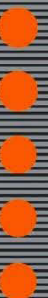


Pitch: 0.635 mm
Male H= 5.0/6.0/7.0/8.0/9.0mm
No. Of Contacts (20, 30, 80)
RoHS + LCP

5BB062CXXF



Pitch: 0.635 mm
Female H= 4.0/10.0mm
No. Of Contacts (20, 30, 80)
RoHS + LCP



CONNECTORS MANUFACTURER

TOPTTEK®
HARDWARE ELECTRONIC MANUFACTURER



1
*
2

Board to Board 0.5/0.635/0.8 mm

B

Pb

RoHS

5BB081CXXM



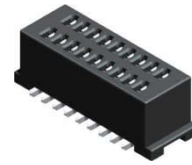
Pitch: 0.80 mm
Male H= 4.75/5.75/7.75 mm
No. Of Contacts (20, 40, 60)
RoHS + LCP

5BB081CXXF



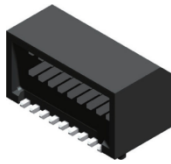
Pitch: 0.80 mm
Female H= 6.55/9.55/12.55 mm
No. Of Contacts (20, 40, 60)
RoHS + LCP

5BB082DXXM



Pitch: 0.8 mm
Male H= 4.7 mm
No. Of Contacts (06, 08 ~ 36)
RoHS + LCP

5BB082DXXF



Pitch: 0.8 mm
Female H= 3.25 mm
No. Of Contacts (06, 08 ~ 36)
RoHS + LCP

5BB083CXXM



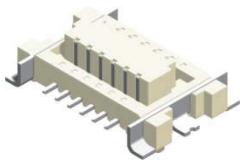
Pitch: 0.80 mm
Male H= 8.0/11.0/12.0/13.0/14.0 mm
No. Of Contacts (20 ~ 100)
RoHS + LCP

5BB083CXXF



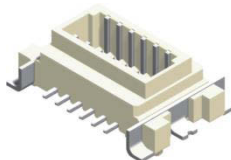
Pitch: 0.80 mm
Female H= 7.4/10.4/11.4/12.4/13.4 mm
No. Of Contacts (20 ~ 100)
RoHS + LCP

5BB084D24M



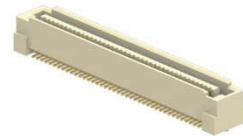
Pitch: 0.8 mm
Male H= 2.4 mm
No. Of Contacts (10,12,14,16,20,30)
RoHS + LCP

5BB084DXXF



Pitch: 0.8 mm
Female H= 2.9/3.6 mm
No. Of Contacts (10,12,14,16,20,30)
RoHS + LCP

5BB085CXXM



Pitch: 0.8 mm
Male H= 4.6/5.6/6.6/7.6 mm
No. Of Contacts (40 ~ 100)
RoHS + LCP

5BB085CXXF



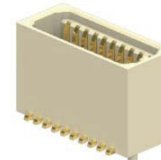
Pitch: 0.8 mm
Female H= 3.75/7.75/11.75 mm
No. Of Contacts (40 ~ 100)
RoHS + LCP

5BB086C36M



Pitch: 0.8 mm
Male H= 3.55 mm
No. Of Contacts (16 ~ 40)
RoHS + LCP

5BB086CXXF



Pitch: 0.8 mm
Male H= 3.65/4.7/5.15/6.15 mm
No. Of Contacts (16 ~ 40)
RoHS + LCP