

▶ TOGGLE SWITCH

Toggle Switch

TOPTTEK[®]

HARDWARE ELECTRONIC COMPONENTS



RoHS
2002/95/EC

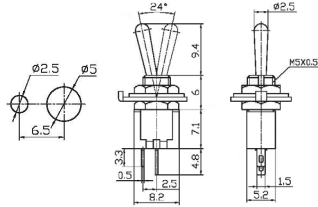
Specifications

Rating: 3A 125V AC | 1.5A 250V AC | Contact Resistance: 20mΩ Max | Insulation Resistance: 500VDC 1000M Ω min | Dielectric Strength: 1000V AC for one minute | Operation Temperature: -25°C to +85°C | Electrical Life: ≥10,000 Cycles



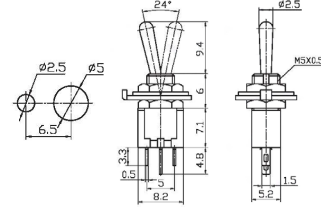
www.toptek-co.com

BTS-101



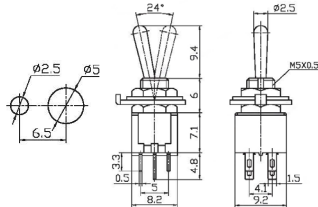
**BTS-101 ON-OFF
SPST 2P**

BTS-102



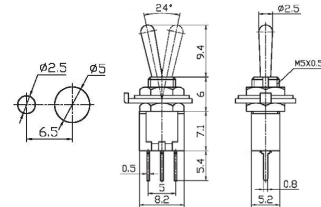
**BTS-102 ON-ON
SPDT 3P**

BTS-202



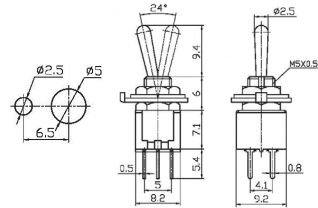
**BTS-202 ON-ON
DPDT 6P**

BTS-102-A2



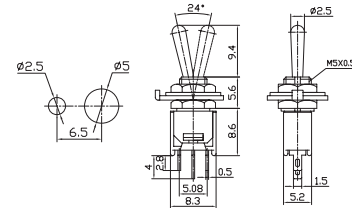
**BTS-102-A2 ON-ON
SPDT 3P**

BTS-202-A2



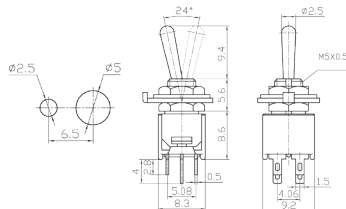
**BTS-202-A2 ON-ON
DPDT 6P**

BTS-103-2A1



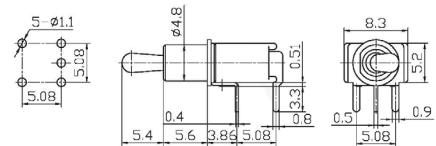
**BTS-103-2A1 ON-OFF-ON
SPDT 3P**

BTS-203-2A1



**BTS-203-2A1 ON-OFF-ON
DPDT 6P**

BTS-102-103-2C3



**BTS-102-2C3 ON-ON
BTS-103-2C3 ON-OFF-ON
SPDT 3P**