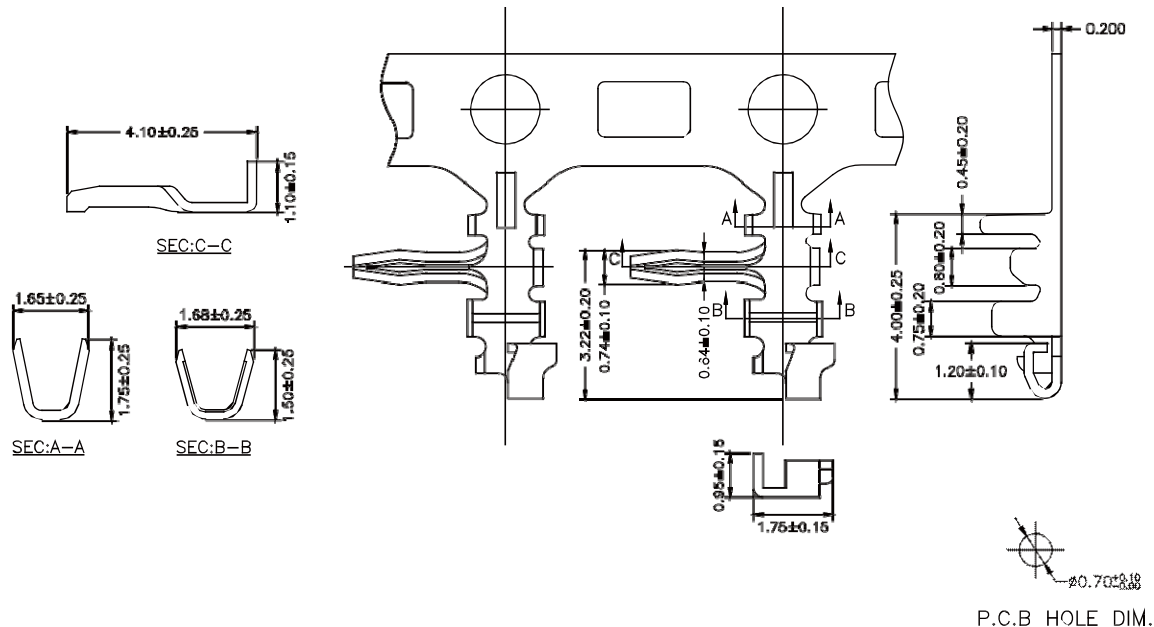


1.5mm Terminal / Housing

Specifications
 Current Rating: 1A AC,DC
 Voltage Rating: 200V AC,DC
 Temperature Range: -25°C to +85°C
 Contact Resistance: 20mΩ Max
 Insulation Resistance: 500MΩ Min
 Withstanding Voltage: 500V AC/minute
 Material: Nylon 66, UL94V-0

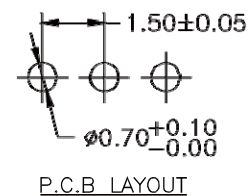
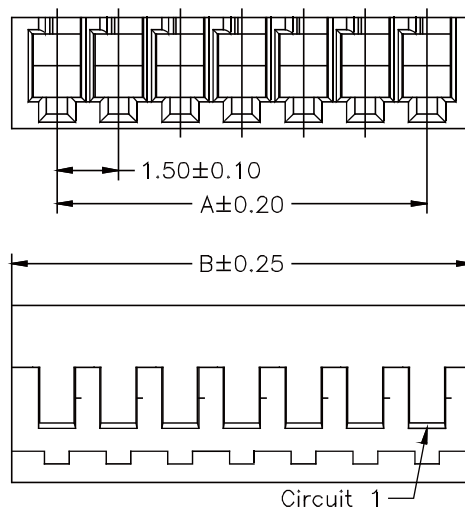
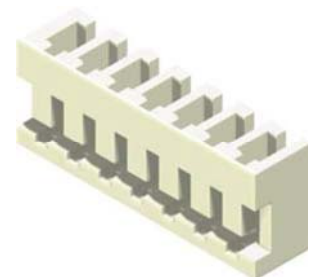


P.C.B HOLE DIM.

Wire Range	Insulation O.D.	Material	Finish
#28-#30	1.00mm(Max)	Brass	Tin Plated

Part No.:1502-RT-L

No. of Contacts	Dimensions	
	A	B
2	1.50	3.70
3	3.00	5.20
4	4.50	6.70
5	6.00	8.20
6	7.50	9.70
7	9.00	11.20
8	10.50	12.70
9	12.00	14.20
10	13.50	15.70
11	15.00	17.20
12	16.50	18.70
13	18.00	20.20
14	19.50	21.70
15	21.00	23.20



P.C.B LAYOUT

Part No.:1502RH-XXW-L