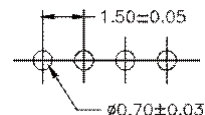
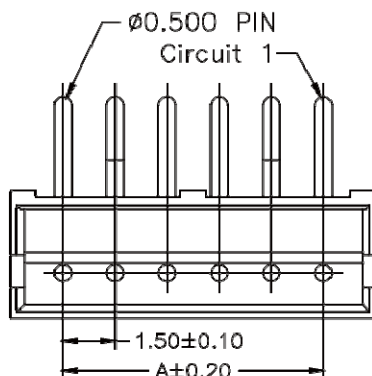
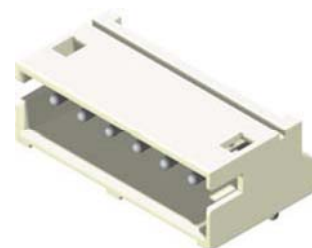


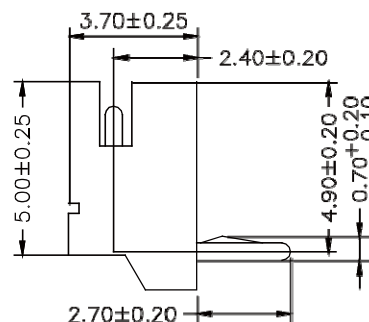
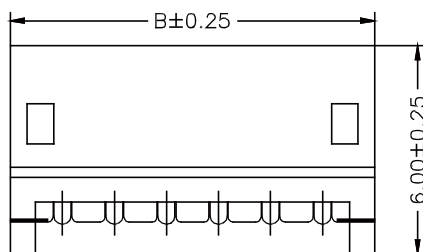
## 1.5mm Wafer Right Angle / Straight Type

**Specifications**

Current Rating: 1A AC,DC  
Voltage Rating: 100V AC,DC  
Temperature Range: -25°C to +85°C  
Contact Resistance: 20mΩ Max  
Insulation Resistance: 500MΩ Min  
Withstanding Voltage: 500V AC/minute  
Terminal: Brass / Tin Plated  
Material: Nylon 66, UL94V-0

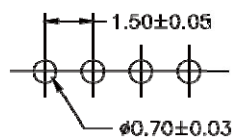
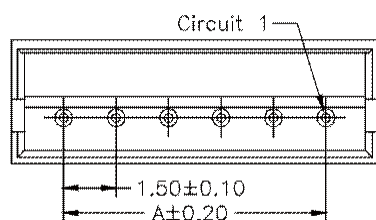
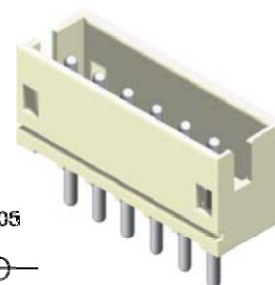


P.C.B. LAYOUT

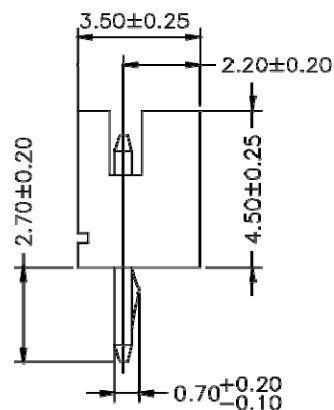
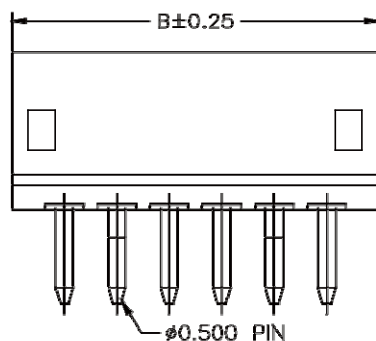


No. of Contacts	Dimensions	
	A	B
2	1.50	4.50
3	3.00	6.00
4	4.50	7.50
5	6.00	9.00
6	7.50	10.50
7	9.00	12.00
8	10.50	13.50
9	12.00	15.00
10	13.50	16.50
11	15.00	18.00
12	16.50	19.50
13	18.00	21.00

**Part No.:1500R-XXTW-L**



P.C.B. LAYOUT



**Part No.:1500S-XXTW-L**