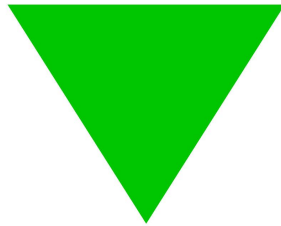


# Buzzer

**TOPTEK®**

HARDWARE ELECTRONIC MANUFACTURER



[www.toptek-co.com](http://www.toptek-co.com)

TOPTEK srl  
10015 - IVREA (TO) - ITALY  
tel. +39 0125 251 211 - fax +39 0341 367 607  
[info@toptek-co.com](mailto:info@toptek-co.com)

**B1275**



Size:  $\varnothing 12 \times 7.5$ mm  
Rated Voltage (VDC) 5  
Operating Voltage (VDC) 3~8  
Resonant Frequency (KHz)  $2.3 \pm 0.3$   
Sound Output at 10cm (dB)  $\geq 85$   
Operating Temperature (°C) -20~+70

**B1295**



Size:  $\varnothing 12 \times 9.5$ mm  
Rated Voltage (VDC) 5  
Operating Voltage (VDC) 3~5  
Resonant Frequency (KHz)  $2.3 \pm 0.3$   
Sound Output at 10cm (dB)  $\geq 90$   
Operating Temperature (°C) -20~+70

**B1614**



Size:  $\varnothing 16 \times 14$ mm  
Rated Voltage (VDC) 5  
Operating Voltage (VDC) 3~8  
Resonant Frequency (KHz)  $2.3 \pm 0.3$   
Sound Output at 10cm (dB)  $\geq 85$   
Operating Temperature (°C) -20~+70

**B9055A**



Size:  $\varnothing 9.2 \times 5$ mm  
Rated Voltage (VDC) 5  
Operating Voltage (VDC) 3~7  
Resonant Frequency (KHz)  $2.7 \pm 0.3$   
Sound Output at 10cm (dB)  $\geq 85$   
Operating Temperature (°C) -20~+70

**B9650A**



Size:  $\varnothing 9.6 \times 5$ mm  
Rated Voltage (VDC) 5  
Operating Voltage (VDC) 3~8  
Resonant Frequency (KHz)  $2.7 \pm 0.3$   
Sound Output at 10cm (dB)  $\geq 80$   
Operating Temperature (°C) -20~+70

**T1213B**



Size:  $\varnothing 12 \times 12.5$ mm  
Rated Voltage (VDC) 5  
Operating Voltage (VDC) 2~5  
Resonant Frequency (KHz) 2.4  
Sound Output at 10cm (dB)  $\geq 90$   
Operating Temperature (°C) -20~+70

**T1255**



Size:  $\varnothing 12 \times 5.5$ mm  
Rated Voltage (VDC) 1.5  
Operating Voltage (VDC) 1~2  
Resonant Frequency (KHz) 2.04  
Sound Output at 10cm (dB)  $\geq 80$   
Operating Temperature (°C) -20~+70

**T1260B**



Size:  $\varnothing 6.5 \times 6$ mm  
Rated Voltage (VDC) 1.5  
Operating Voltage (VDC) 1~2  
Resonant Frequency (KHz) 2.73  
Sound Output at 10cm (dB) Min 90  
Operating Temperature (°C) -20~+60

**T1265W**



Size:  $\varnothing 12 \times 6.5$ mm  
Rated Voltage (VDC) 1.3  
Operating Voltage (VDC) 1~2  
Resonant Frequency (KHz) 3.2~3.7  
Sound Output at 10cm (dB)  $\geq 85$   
Operating Temperature (°C) -20~+70

**T1285**



Size:  $\varnothing 12 \times 8.5$ mm  
Rated Voltage (VDC) 1.5  
Operating Voltage (VDC) 1~2  
Resonant Frequency (KHz) 2.04  
Sound Output at 10cm (dB)  $\geq 90$   
Operating Temperature (°C) -20~+70

**T1290**



Size:  $\varnothing 12 \times 9$ mm  
Rated Voltage (VDC) 12  
Operating Voltage (VDC) 7~16  
Resonant Frequency (KHz) 2.4  
Sound Output at 10cm (dB)  $\geq 90$   
Operating Temperature (°C) -20~+70

Electro-Magnetic Buzzer

Electro-Magnetic Transducer

# CONNECTORS MANUFACTURER

TOPTEK®  
HARDWARE ELECTRONIC MANUFACTURER

www.toptek-co.com

13  
\*  
2

Buzzer



ROHS

Electro-Magnetic Transducer

T1450



Size:  $\varnothing 13.9 \times 5$ mm  
Rated Voltage (VDC) 3  
Operating Voltage (VDC) 2~5  
Resonant Frequency (KHz) 2.0  
Sound Output at 10cm (dB)  $\geq 85$   
Operating Temperature (°C) -20~+70

T1614



Size:  $\varnothing 16 \times 14$ mm  
Rated Voltage (VDC) 5  
Operating Voltage (VDC) 3~7  
Resonant Frequency (KHz) 2.04  
Sound Output at 10cm (dB)  $\geq 90$   
Operating Temperature (°C) -20~+70

T1614B



Size:  $\varnothing 16 \times 14$ mm  
Rated Voltage (VDC) 12  
Operating Voltage (VDC) 7~15  
Resonant Frequency (KHz) 2.04  
Sound Output at 10cm (dB)  $\geq 90$   
Operating Temperature (°C) -20~+70

T1614C



Size:  $\varnothing 16 \times 14$ mm  
Rated Voltage (VDC) 12  
Operating Voltage (VDC) 7~15  
Resonant Frequency (KHz) 2.04  
Sound Output at 10cm (dB)  $\geq 90$   
Operating Temperature (°C) -20~+70

T1614D



Size:  $\varnothing 16 \times 14$ mm  
Rated Voltage (VDC) 12  
Operating Voltage (VDC) 7~15  
Resonant Frequency (KHz) 2.04  
Sound Output at 10cm (dB)  $\geq 90$   
Operating Temperature (°C) -20~+70

T2512



Size:  $\varnothing 25 \times 12$ mm  
Rated Voltage (VDC) 12  
Operating Voltage (VDC) 7~14  
Resonant Frequency (KHz) 1.0  
Sound Output at 10cm (dB)  $\geq 90$   
Operating Temperature (°C) -20~+70

T2513A



Size:  $\varnothing 32.5 \times 13$ mm  
Rated Voltage (VDC) 12  
Operating Voltage (VDC) 8~16  
Resonant Frequency (KHz) 0.74  
Sound Output at 10cm (dB) 87~93  
Operating Temperature (°C) -20~+70

T2513B



Size:  $\varnothing 25 \times 12$ mm  
Rated Voltage (VDC) 12  
Operating Voltage (VDC) 8~16  
Resonant Frequency (KHz) 0.74  
Sound Output at 10cm (dB) 87~93  
Operating Temperature (°C) -40~+85

T6636-1.5/3/5



Size:  $\varnothing 6.6 \times 3.6$ mm  
Rated Voltage (V) 1.5-5  
Operating Voltage (VDC) 8~16  
Resonant Frequency (KHz) 2.74  
Sound Output at 10cm (dB) 75~80  
Operating Temperature (°C) -25~+70

T9040A



Size:  $\varnothing 9 \times 4.0$ mm  
Rated Voltage (VDC) 3  
Operating Voltage (VDC) 2~5  
Resonant Frequency (KHz) 2.74  
Sound Output at 10cm (dB)  $\geq 85$   
Operating Temperature (°C) -25~+70

T9040BA



Size:  $\varnothing 9 \times 4.0$ mm  
Rated Voltage (VDC) 5  
Operating Voltage (VDC) 3~7  
Resonant Frequency (KHz) 2.74  
Sound Output at 10cm (dB)  $\geq 90$   
Operating Temperature (°C) -25~+70

T9050A



Size:  $\varnothing 9 \times 5.0$ mm  
Rated Voltage (VDC) 5  
Operating Voltage (VDC) 3~7  
Resonant Frequency (KHz) 2.74  
Sound Output at 10cm (dB)  $\geq 90$   
Operating Temperature (°C) -25~+70

**T9055**

Size:  $\varnothing 9.2 \times 5.5 \text{mm}$   
 Rated Voltage (VDC) 12  
 Operating Voltage (VDC) 8~16  
 Resonant Frequency (KHz) 2.74  
 Sound Output at 10cm (dB)  $\geq 85$   
 Operating Temperature (°C) -25~+70

**T9650BB**

Size:  $\varnothing 11 \times 5 \text{mm}$   
 Rated Voltage (VDC) 1.5  
 Operating Voltage (VDC) 1~2  
 Resonant Frequency (KHz) 2.74  
 Sound Output at 10cm (dB)  $\geq 85$   
 Operating Temperature (°C) -25~+70

Electro-Magnetic Buzzer

13  
\*  
3

**B2316W**

Size: 23.5\*17mm  
 Rated Voltage (VDC) 6  
 Operating Voltage (VDC) 3~7  
 Resonant Frequency (KHz) 0.4±0.1  
 Sound Output at 10cm (dB)  $\geq 80$   
 Operating Temperature (°C) -20~+60

**B2330**

Size: 26.8\*22\*18.5 mm  
 Rated Voltage (VAC) 220  
 Resonant Frequency (KHz) 6.5±0.1  
 Sound Output at 10cm (dB)  $\geq 80$   
 Operating Temperature (°C) -25~+110

**B2316**

Size:  $\varnothing 26.5 \times 34 \text{mm} \times 17.5 \text{mm}$   
 Rated Voltage (VDC) 12  
 Resonant Frequency (KHz) 0.4±0.1  
 Sound Output at 10cm (dB)  $\geq 85$   
 Operating Temperature (°C) -20~+60

Mechanical Buzzer

**B1475**

Size:  $\varnothing 13 \times 7.5 \text{mm}$   
 Rated Voltage (VDC) 12  
 Operating Voltage (VDC) 3~16  
 Resonant Frequency (KHz) 4.0±0.5  
 Sound Output at 10cm (dB)  $\geq 85$   
 Operating Temperature (°C) -20~+70

**B2211W**

Size:  $\varnothing 32 \times 10.8 \text{mm}$   
 Rated Voltage (VDC) 12  
 Operating Voltage (VDC) 7~15  
 Resonant Frequency (KHz) 4.5±0.5  
 Sound Output at 10cm (dB)  $\geq 85$   
 Operating Temperature (°C) -20~+60

**B2316**

Size:  $\varnothing 23 \times 16 \text{mm}$   
 Rated Voltage (VDC) 12  
 Operating Voltage (VDC) 3~20  
 Resonant Frequency (KHz) 2.9±0.5  
 Sound Output at 10cm (dB)  $\geq 90$   
 Operating Temperature (°C) -20~+70

Piezo Buzzer

**B2395W**

Size:  $\varnothing 24 \times 9.5 \text{mm}$   
 Rated Voltage (VDC) 12  
 Operating Voltage (VDC) 3~20  
 Resonant Frequency (KHz) 3.4±0.5  
 Sound Output at 10cm (dB)  $\geq 90$   
 Operating Temperature (°C) -20~+65

**B2398**

Size:  $\varnothing 23 \times 9.8 \text{mm}$   
 Rated Voltage (VDC) 12  
 Operating Voltage (VDC) 3~20  
 Resonant Frequency (KHz) 3.5±0.5  
 Sound Output at 10cm (dB)  $\geq 90$   
 Operating Temperature (°C) -20~+70

**B2410**

Size:  $\varnothing 23.2 \times 9.2 \text{mm}$   
 Rated Voltage (V) 12  
 Operating Voltage (VDC) 3~24  
 Resonant Frequency (KHz) 3.5±0.5  
 Sound Output at 10cm (dB)  $\geq 90$   
 Operating Temperature (°C) -20~+70



# CONNECTORS MANUFACTURER

TOPTEK®  
HARDWARE ELECTRONIC MANUFACTURER

www.toptek-co.com

13  
\*  
4

Piezo Buzzer

Buzzer



RoHS

B2413W



Size:  $\varnothing 22.7 \times 11.1$ mm  
Rated Voltage (V) 12  
Operating Voltage (VDC) 3~20  
Resonant Frequency (KHz)  $3.5 \pm 0.5$   
Sound Output at 10cm (dB)  $\geq 90$   
Operating Temperature (°C) -20~+60

B2418A



Size:  $\varnothing 23.8 \times 16$ mm  
Rated Voltage (V) 12  
Operating Voltage (VDC) 3~20  
Resonant Frequency (KHz)  $2.8 \pm 0.5$   
Sound Output at 10cm (dB)  $\geq 90$   
Operating Temperature (°C) -20~+65

B2418C



Size:  $\varnothing 24 \times 17.5$ mm  
Rated Voltage (VDC) 12  
Operating Voltage (VDC) 3~20  
Resonant Frequency (KHz)  $3.7 \pm 0.5$   
Sound Output at 10cm (dB)  $\geq 95$   
Operating Temperature (°C) -20~+70

B3015



Size:  $\varnothing 30 \times 17.4$ mm  
Rated Voltage (VDC) 12  
Operating Voltage (VDC) 3~20  
Resonant Frequency (KHz)  $2.7 \pm 0.5$   
Sound Output at 10cm (dB)  $\geq 95$   
Operating Temperature (°C) -20~+70

B3020B



Size:  $\varnothing 30 \times 19.5$ mm  
Rated Voltage (VDC) 12  
Operating Voltage (VDC) 3~20  
Resonant Frequency (KHz)  $3.5 \pm 0.5$   
Sound Output at 10cm (dB)  $\geq 100$   
Operating Temperature (°C) -20~+80

B3020W



Size:  $\varnothing 30 \times 19.8$ mm  
Rated Voltage (VDC) 12  
Operating Voltage (VDC) 3~20  
Resonant Frequency (KHz)  $3.5 \pm 0.5$   
Sound Output at 10cm (dB)  $\geq 100$   
Operating Temperature (°C) -20~+70

B3024W



Size:  $\varnothing 29 \times 24.5$ mm  
Rated Voltage (VDC) 12  
Operating Voltage (VDC) 2~20  
Resonant Frequency (KHz)  $3.5 \pm 0.5$   
Sound Output at 10cm (dB)  $\geq 95$   
Operating Temperature (°C) -20~+70

B3095W



Size:  $\varnothing 30 \times 9.5$ mm  
Rated Voltage (VDC) 12  
Operating Voltage (VDC) 3~20  
Resonant Frequency (KHz)  $3.4 \pm 0.5$   
Sound Output at 10cm (dB)  $\geq 90$   
Operating Temperature (°C) -20~+70

B3114W



Size:  $\varnothing 31 \times 14$ mm  
Rated Voltage (VDC) 9  
Operating Voltage (VDC) 5~20  
Resonant Frequency (KHz)  $3.5 \pm 0.5$   
Sound Output at 10cm (dB)  $\geq 90$   
Operating Temperature (°C) -20~+60

B3215W



Size:  $\varnothing 32 \times 14.3$ mm  
Rated Voltage (VDC) 3  
Operating Voltage (VDC) 3~20  
Resonant Frequency (KHz)  $3.9 \pm 0.5$   
Sound Output at 10cm (dB)  $\geq 95$   
Operating Temperature (°C) -25~+65

B3630H



Size:  $\varnothing 35.2 \times 32.6$ mm  
Rated Voltage (V) 40  
Operating Voltage (VDC) 9~48  
Resonant Frequency (KHz)  $2.8 \pm 0.5$   
Sound Output at 10cm (dB)  $\geq 80$   
Operating Temperature (°C) -20~+60

B4020



Size:  $\varnothing 40 \times 20$ mm  
Rated Voltage (VDC) 12  
Operating Voltage (VDC) 3~20  
Resonant Frequency (KHz)  $2.8 \pm 0.5$   
Sound Output at 10cm (dB)  $\geq 85$   
Operating Temperature (°C) -20~+65

www.toptek-co.com

info@toptek-co.com

**B4216W**

**Size: Ø41.5\*16mm**  
Rated Voltage (VDC) 12  
Operating Voltage (VDC) 3~20  
Resonant Frequency (KHz) 2.8±0.5  
Sound Output at 30cm (dB) ≥100  
Operating Temperature (°C) -20~+65

**B4218W**

**Size: Ø42\*18mm**  
Rated Voltage (VDC) 12  
Operating Voltage (VDC) 3~15  
Resonant Frequency (KHz) 2.8±0.5  
Sound Output at 30cm (dB) ≥90  
Operating Temperature (°C) -20~+60

**B4216W**

**Size: Ø42\*21mm**  
Rated Voltage (VDC) 12  
Operating Voltage (VDC) 9~15  
Resonant Frequency (KHz) 2.8±0.5  
Sound Output at 30cm (dB) ≥100  
Operating Temperature (°C) -20~+60

**B4314**

**Size: Ø43\*14mm**  
Rated Voltage (VDC) 12  
Operating Voltage (VDC) 3~20  
Resonant Frequency (KHz) 2.8±0.5  
Sound Output at 30cm (dB) ≥100  
Operating Temperature (°C) -20~+60

**B4333**

**Size: Ø43\*33mm**  
Rated Voltage (VDC) 12  
Operating Voltage (VDC) 5~28  
Resonant Frequency (KHz) 2.9±0.5  
Sound Output at 30cm (dB) ≥95  
Operating Temperature (°C) -20~+65

**B4526W**

**Size: Ø44\*26mm**  
Rated Voltage (VDC) 12  
Operating Voltage (VDC) 1~20  
Resonant Frequency (KHz) 2.8±0.5  
Sound Output at 30cm (dB) ≥105  
Operating Temperature (°C) -20~+60

**B5029**

**Size: Ø50\*29mm**  
Rated Voltage (VDC) 12  
Operating Voltage (VDC) 5~13  
Resonant Frequency (KHz) 2.5±0.5  
Sound Output at 24.5cm (dB) ≥100  
Operating Temperature (°C) -20~+60

**F2260B**

**Size: Ø22.5\*9.2mm**  
Rated Voltage (VDC) 12  
Operating Voltage (VDC) 3~13  
Resonant Frequency (KHz) 3.6±0.5  
Sound Output at 30cm (dB) ≥85  
Operating Temperature (°C) -20~+60

**F2410-3**

**Size: Ø23.2\*9.8mm**  
Rated Voltage (VDC) 12  
Operating Voltage (VDC) 3~28  
Resonant Frequency (KHz) 3.4±0.5  
Sound Output at 10cm (dB) ≥90  
Operating Temperature (°C) -20~+65

**F2412B**

**Size: Ø24\*12mm**  
Rated Voltage (VDC) 12  
Operating Voltage (VDC) 3~20  
Resonant Frequency (KHz) 3.4±0.5  
Sound Output at 10cm (dB) ≥90  
Operating Temperature (°C) -20~+70

**F2580**

**Size: Ø25\*7mm**  
Rated Voltage (VDC) 12  
Operating Voltage (VDC) 3~24  
Resonant Frequency (KHz) 3.5±0.5  
Sound Output at 30cm (dB) ≥85  
Operating Temperature (°C) -20~+70

**F2965**

**Size: Ø28.5\*9.8mm**  
Rated Voltage (VDC) 12  
Operating Voltage (VDC) 3~20  
Resonant Frequency (KHz) 3.0±0.5  
Sound Output at 10cm (dB) ≥90  
Operating Temperature (°C) -20~+60

Piezo Buzzer

# CONNECTORS MANUFACTURER

TOPTEK®  
HARDWARE ELECTRONIC MANUFACTURER

www.toptek-co.com

13  
\*  
6

Piezo Buzzer

F3010C



Size:  $\varnothing 29.5 \times 10$ mm  
Rated Voltage (VDC) 12  
Operating Voltage (VDC) 3~20  
Resonant Frequency (KHz)  $3.0 \pm 0.5$   
Sound Output at 30cm (dB)  $\geq 85$   
Operating Temperature (°C) -20~+70

F3380



Size:  $\varnothing 33.5 \times 11.6$ mm  
Rated Voltage (VDC) 12  
Operating Voltage (VDC) 3~20  
Resonant Frequency (KHz)  $2.6 \pm 0.5$   
Sound Output at 10cm (dB)  $\geq 85$   
Operating Temperature (°C) -20~+65

F3916



Size:  $\varnothing 38.8 \times 16$ mm  
Rated Voltage (VDC) 12  
Operating Voltage (VDC) 6~20  
Resonant Frequency (KHz)  $3.4 \pm 0.5$   
Sound Output at 10cm (dB)  $\geq 106$   
Operating Temperature (°C) -30~+70

F3917



Size:  $\varnothing 39 \times 20$ mm  
Rated Voltage (VDC) 9  
Operating Voltage (VDC) 3~28  
Resonant Frequency (KHz)  $3.4 \pm 0.3$   
Sound Output at 1 m (dB)  $\geq 95$   
Operating Temperature (°C) -30~+80

Piezo Transducer

G3012



Size:  $\varnothing 30 \times 12$ mm  
Rated Voltage (Vrms) 5.5  
Operating Voltage (Vrms) 30  
Resonant Frequency (KHz)  $25.0 \pm 5.0$   
Sound Output at 30 cm (dB)  $\geq 90$   
Operating Temperature (°C) -20~+70

G3812



Size:  $\varnothing 38 \times 12.5$ mm  
Rated Voltage (Vrms) 5.5  
Operating Voltage (Vrms) 30  
Resonant Frequency (KHz)  $25.0 \pm 5.0$   
Sound Output at 30 cm (dB)  $\geq 95$   
Operating Temperature (°C) -20~+70

G4113



Size:  $\varnothing 41 \times 12.5$ mm  
Rated Voltage (Vrms) 2.83  
Operating Voltage (Vrms) 20 max  
Resonant Frequency (KHz)  $20.0 \pm 0.5$   
Sound Output at 30 cm (dB)  $\geq 95$   
Operating Temperature (°C) -20~+70

G5118



Size:  $\varnothing 50.7 \times 17.9$ mm  
Rated Voltage (Vrms) 2.83  
Operating Voltage (Vrms) 30  
Resonant Frequency (KHz)  $20.0 \pm 0.5$   
Sound Output at 30 cm (dB)  $\geq 100$   
Operating Temperature (°C) -20~+70

T1032W



Size:  $\varnothing 10 \times 3.2$ mm  
Rated Voltage (Vp-p) 3  
Operating Voltage (Vp-p) 2~5  
Resonant Frequency (KHz)  $3.4 \pm 0.5$   
Sound Output at 10 cm (dB)  $\geq 80$   
Operating Temperature (°C) -20~+60

T1255



Size:  $\varnothing 12 \times 5.5$ mm  
Rated Voltage (Vp-p) 9  
Operating Voltage (Vp-p) 1~20  
Resonant Frequency (KHz)  $4.0 \pm 0.5$   
Sound Output at 10 cm (dB)  $\geq 85$   
Operating Temperature (°C) -20~+60

www.toptek-co.com

info@toptek-co.com

Buzzer



RoHS

**T1325W**



**Size: Ø13\*2.5mm**  
 Rated Voltage (Vp-p) 5  
 Operating Voltage (Vp-p) 1~25  
 Resonant Frequency (KHz) 5.0±0.5  
 Sound Output at 10cm (dB) ≥80  
 Operating Temperature (°C) -20~+60

**T1360A**



**Size: Ø12.5\*6.8mm**  
 Rated Voltage (Vp-p) 3  
 Operating Voltage (Vp-p) 1~30  
 Resonant Frequency (KHz) 4.0±0.5  
 Sound Output at 10cm (dB) ≥75  
 Operating Temperature (°C) -20~+70

**T1360E**



**Size: Ø12.5\*6.2mm**  
 Rated Voltage (Vp-p) 3  
 Operating Voltage (Vp-p) 1~10  
 Resonant Frequency (KHz) 4.0±0.5  
 Sound Output at 10cm (dB) ≥75  
 Operating Temperature (°C) -20~+70

**T1440W**



**Size: Ø13.6\*4.0mm**  
 Rated Voltage (Vp-p) 3  
 Operating Voltage (Vp-p) 1~20  
 Resonant Frequency (KHz) 4.8±0.5  
 Sound Output at 10cm (dB) ≥75  
 Operating Temperature (°C) -20~+60

**T1450**



**Size: Ø13.8\*5.0mm**  
 Rated Voltage (Vp-p) 5  
 Operating Voltage (Vp-p) 1~30  
 Resonant Frequency (KHz) 4.0±0.5  
 Sound Output at 10cm (dB) ≥85  
 Operating Temperature (°C) -20~+70

**T1470**



**Size: Ø13.8\*6.8mm**  
 Rated Voltage (Vp-p) 5  
 Operating Voltage (Vp-p) 1~25  
 Resonant Frequency (KHz) 4.0±0.5  
 Sound Output at 10cm (dB) ≥85  
 Operating Temperature (°C) -20~+70

**T1580L**



**Size: 15.2\*15.2\*8.5mm**  
 Rated Voltage (Vp-p) 12  
 Operating Voltage (Vp-p) 3~40  
 Resonant Frequency (KHz) 0.4±0.5  
 Sound Output at 10cm (dB) ≥70  
 Operating Temperature (°C) -20~+70

**T1770A**



**Size: Ø17.0\*7.0mm**  
 Rated Voltage (Vp-p) 5  
 Operating Voltage (Vp-p) 1~30  
 Resonant Frequency (KHz) 4.0±0.5  
 Sound Output at 10cm (dB) ≥85  
 Operating Temperature (°C) -20~+70

**T1790**



**Size: Ø17\*8.6mm**  
 Rated Voltage (Vp-p) 3  
 Operating Voltage (Vp-p) 1~25  
 Resonant Frequency (KHz) 2.0±0.5  
 Sound Output at 10cm (dB) ≥85  
 Operating Temperature (°C) -20~+60

**T1790A**



**Size: Ø17\*9.0mm**  
 Rated Voltage (Vp-p) 3  
 Operating Voltage (Vp-p) 1~25  
 Resonant Frequency (KHz) 4.0±0.5  
 Sound Output at 10cm (dB) ≥75  
 Operating Temperature (°C) -20~+70

**T1980L**



**Size: 19\*19\*8.5mm**  
 Rated Voltage (Vp-p) 12  
 Operating Voltage (Vp-p) 3~40  
 Resonant Frequency (KHz) 0.4±0.5  
 Sound Output at 10cm (dB) ≥75  
 Operating Temperature (°C) -20~+70

**T2208**



**Size: Ø22\*7.8mm**  
 Rated Voltage (Vp-p) 9  
 Operating Voltage (Vp-p) 1~30  
 Resonant Frequency (KHz) 4.1±0.5  
 Sound Output at 10cm (dB) ≥95  
 Operating Temperature (°C) -20~+70



# CONNECTORS MANUFACTURER

TOPTEK®  
HARDWARE ELECTRONIC MANUFACTURER

www.toptek-co.com

13  
\*  
8

Piezo Transducer

Buzzer



RoHS

**T2210**



**Size:** Ø22\*10.6mm  
**Rated Voltage (Vp-p)** 3  
**Operating Voltage (Vp-p)** 1~30  
**Resonant Frequency (KHz)** 2.0±0.5  
**Sound Output at 10cm (dB)** ≥75  
**Operating Temperature (°C)** -20~+70

**T2250W**



**Size:** Ø22\*4.8mm  
**Rated Voltage (Vp-p)** 10  
**Operating Voltage (Vp-p)** 1~30  
**Resonant Frequency (KHz)** 4.8±0.5  
**Sound Output at 10cm (dB)** ≥90  
**Operating Temperature (°C)** -20~+60

**T2270**



**Size:** Ø22.1\*7.2mm  
**Rated Voltage (Vp-p)** from 3 to 12  
**Operating Voltage (Vp-p)** 1~30  
**Resonant Frequency (KHz)** 4.0±0.5  
**Sound Output at 10cm (dB)** ≥90  
**Operating Temperature (°C)** -20~+60

**T2270D**



**Size:** Ø22.0\*26.5\*7.0mm  
**Rated Voltage (Vp-p)** 3  
**Operating Voltage (Vp-p)** 1~30  
**Resonant Frequency (KHz)** 2.0±0.5  
**Sound Output at 10cm (dB)** ≥75  
**Operating Temperature (°C)** -20~+70

**T2309B**



**Size:** Ø22.5\*9.0mm  
**Rated Voltage (Vp-p)** 10  
**Operating Voltage (Vp-p)** 1~30  
**Resonant Frequency (KHz)** 1.8±0.5  
**Sound Output at 10cm (dB)** ≥85  
**Operating Temperature (°C)** -20~+60

**T2311A**



**Size:** Ø28.5\*10.3mm  
**Rated Voltage (Vp-p)** 12  
**Operating Voltage (Vp-p)** 1~30  
**Resonant Frequency (KHz)** 2.8±0.5  
**Sound Output at 10cm (dB)** ≥90  
**Operating Temperature (°C)** -20~+60

**T2395W**



**Size:** Ø24\*9.5mm  
**Rated Voltage (Vp-p)** 5.0  
**Operating Voltage (Vp-p)** 30  
**Resonant Frequency (KHz)** 3.5±0.5  
**Sound Output at 10 cm (dB)** ≥95  
**Operating Temperature (°C)** -20~+60

**T2475**



**Size:** Ø24\*7.5mm  
**Rated Voltage (Vp-p)** 12  
**Operating Voltage (Vp-p)** 30  
**Resonant Frequency (KHz)** 4.0±0.5  
**Sound Output at 10 cm (dB)** ≥90  
**Operating Temperature (°C)** -20~+60

**T2495B**



**Size:** Ø24\*9.5mm  
**Rated Voltage (Vp-p)** 12  
**Operating Voltage (Vp-p)** 30  
**Resonant Frequency (KHz)** 3.0±0.5  
**Sound Output at 10 cm (dB)** ≥90  
**Operating Temperature (°C)** -20~+60

**T2580L**




**Size:** 25.3\*25.3\*8.5mm  
**Rated Voltage (Vp-p)** 12  
**Operating Voltage (Vp-p)** 3~40  
**Resonant Frequency (KHz)** 0.4±0.5  
**Sound Output at 10 cm (dB)** ≥79  
**Operating Temperature (°C)** -20~+70

**T3011**



**Size:** Ø30\*11mm  
**Rated Voltage (Vp-p)** 3  
**Operating Voltage (Vp-p)** 1~30  
**Resonant Frequency (KHz)** 2.2±0.5  
**Sound Output at 10 cm (dB)** ≥85  
**Operating Temperature (°C)** -20~+70

**T3016W**



**Size:** Ø30\*16.5mm  
**Rated Voltage (Vp-p)** 9  
**Operating Voltage (Vp-p)** 3~28  
**Resonant Frequency (KHz)** 3.4±0.5  
**Sound Output at 10 cm (dB)** ≥95  
**Operating Temperature (°C)** -20~+60

**T3045W**



**Size: Ø30\*4.5mm**  
Rated Voltage (Vp-p) 12  
Operating Voltage (Vp-p) 1~30  
Resonant Frequency (KHz) 4.0±0.5  
Sound Output at 10cm (dB) ≥90  
Operating Temperature (°C) -20~+60

**T3055DW**



**Size: Ø30\*5.5mm**  
Rated Voltage (Vp-p) 12  
Operating Voltage (Vp-p) 3~24  
Resonant Frequency (KHz) 1.3±0.5  
Sound Output at 10cm (dB) ≥80  
Operating Temperature (°C) -20~+60

**T3075AD**



**Size: Ø29\*7.5mm**  
Rated Voltage (Vp-p) 12  
Operating Voltage (Vp-p) 1~30  
Resonant Frequency (KHz) 2.5±0.5  
Sound Output at 10cm (dB) ≥85  
Operating Temperature (°C) -20~+60

**T3590AW**



**Size: Ø34.6\*9.0mm**  
Rated Voltage (Vp-p) 12  
Operating Voltage (Vp-p) 1~30  
Resonant Frequency (KHz) 1.0±0.5  
Sound Output at 10cm (dB) ≥85  
Operating Temperature (°C) -20~+60

**T4410**



**Size: Ø44\*10.0mm**  
Rated Voltage (Vp-p) 5  
Operating Voltage (Vp-p) 1~30  
Resonant Frequency (KHz) 0.9±0.5  
Sound Output at 10cm (dB) ≥85  
Operating Temperature (°C) -20~+60

**T4216W**



**Size: Ø41.5\*16mm**  
Rated Voltage (Vp-p) 9  
Operating Voltage (Vp-p) 1~30  
Resonant Frequency (KHz) 2.8±0.5  
Sound Output at 10cm (dB) ≥90  
Operating Temperature (°C) -20~+70

**T4524**



**Size: Ø46\*8.7mm**  
Rated Voltage (Vp-p) 12  
Operating Voltage (Vp-p) 3~50  
Resonant Frequency (KHz) 3.2±0.5  
Sound Output at 30cm (dB) ≥95  
Operating Temperature (°C) -40~+95

**T5216**



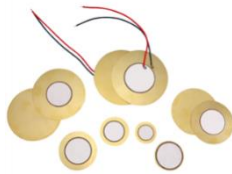
**Size: Ø51.8\*15.5mm**  
Rated Voltage (Vp-p) 18  
Operating Voltage (Vp-p) 1~60  
Resonant Frequency (KHz) 2.0±0.5  
Sound Output at 30cm (dB) ≥95  
Operating Temperature (°C) -20~+105

**1323T-10.0E1**



**Size: 13\*22.7\*0.37mm**  
Zr(Ω) 1000  
C(nF) 8nF±30%  
Frequency (KHz) 10.0±1.0  
Shape E1  
Metal Brass

**A1**



**Size: Ø8±12\*0.12±0.63mm**  
Zr(Ω) 300~800  
C(nF) 5.5nF~80nF ±30%  
Frequency (KHz) 0.7~10.0 ±0.5  
Shape A1  
Metal Brass / Alloy / S-steel

**A2,A3**



**Size: Ø9.9~70\*0.12±0.2mm**  
Zr(Ω) 500~1500  
C(nF) 6~50 ±30%  
Frequency (KHz) 3.5~12.0 ±0.05  
Shape A2 / A3  
Metal Brass / Alloy

# CONNECTORS MANUFACTURER

Piezo Element & Vibrator	<p><b>A3</b></p>  <p>Size: <math>\varnothing 21.5 \times 70 \times 0.3 \div 0.65 \text{mm}</math>                  Zr(<math>\Omega</math>) 100<math>\div</math>300                  C(nF) 80 <math>\div</math> 600nF <math>\pm 30\%</math>                  Frequency (KHz) 2.5 <math>\div</math> 4.8 <math>\pm 0.5</math>                  Shape A3                  Metal Brass / S-steel</p>	<p><b>A14</b></p>  <p>Size: <math>\varnothing 28 \times 2.07 \text{mm}</math>                  Zr(<math>\Omega</math>) <math>\leq 2.0</math>                  C (pF) 3300 <math>\pm 20\%</math>                  Frequency R.Fr(MHz) 1.05 <math>\pm 0.05</math>                  Shape A13</p>	<p><b>A33,D33</b></p>  <p>Size: <math>\varnothing 22 \div 55 \times 1.3 \div 0.05 \text{mm}</math>                  Zr(<math>\Omega</math>) 500<math>\div</math>100M                  C(nF) 1.8<math>\div</math>100 <math>\pm 30\%</math>                  Frequency (KHz) 3.0<math>\div</math>39.0 <math>\pm 0.5</math>                  Shape A33 / D33                  Metal Brass</p>
	<p><b>B1</b></p>  <p>Size: <math>\varnothing 12 \div 35 \times 0.12 \div 0.62 \text{mm}</math>                  Zr(<math>\Omega</math>) 300<math>\div</math>500                  C(nF) 12 <math>\div</math> 30 <math>\pm 30\%</math>                  Frequency (KHz) 2.9 <math>\div</math> 7.0 <math>\pm 0.5</math>                  Shape B1                  Metal Brass / S-T / Alloy</p>	<p><b>D2</b></p>  <p>Size: 8*8 *0.12mm                  Zr(<math>\Omega</math>) 1500                  C(nF) 6 <math>\pm 30\%</math>                  Frequency (KHz) 7.0 <math>\pm 0.5</math>                  Shape D2                  Metal Brass</p>	
SMD Piezo Buzzer	<p><b>B1580S</b></p>  <p>Size: 15.5*14.3*8mm                  Rated Voltage (VDC) 12                  Operating Voltage (VDC) 1 ~ 30                  Resonant Frequency (KHz) 4.5<math>\pm</math>0.5                  Sound Output at 10 cm (dB) <math>\geq 90</math>                  Operating Temperature (<math>^{\circ}\text{C}</math>) -40<math>\sim</math>+85</p>	<p><b>B2412S</b></p>  <p>Size: <math>\varnothing 24.0 \times 12.0 \text{mm}</math>                  Rated Voltage (VDC) 12                  Operating Voltage (VDC) 3 ~ 16                  Resonant Frequency (KHz) 3.4<math>\pm</math>0.5                  Sound Output at 10 cm (dB) <math>\geq 90</math>                  Operating Temperature (<math>^{\circ}\text{C}</math>) -20<math>\sim</math>+75</p>	<p><b>T1710S</b></p>  <p>Size: <math>\varnothing 17.0 \times 10.0 \text{mm}</math>                  Rated Voltage (VDC) 12                  Operating Voltage (VDC) 3 ~ 20                  Resonant Frequency (KHz) 4.0<math>\pm</math>0.5                  Sound Output at 10 cm (dB) <math>\geq 85</math>                  Operating Temperature (<math>^{\circ}\text{C}</math>) -20<math>\sim</math>+70</p>
	<p><b>B1310ES</b></p>  <p>Size: 12.8*12.8*10mm                  Rated Voltage (VDC) 12                  Operating Voltage (VDC) 1 ~ 30                  Resonant Frequency (KHz) 4.5<math>\pm</math>0.5                  Sound Output at 10 cm (dB) <math>\geq 90</math>                  Operating Temperature (<math>^{\circ}\text{C}</math>) -40<math>\sim</math>+85</p>	<p><b>B1370ES</b></p>  <p>Size: <math>\varnothing 15.5 \times 14.3 \times 8 \text{mm}</math>                  Rated Voltage (VDC) 5                  Operating Voltage (VDC) 3 ~ 8                  Resonant Frequency (KHz) 2.3<math>\pm</math>0.3                  Sound Output at 10 cm (dB) <math>\geq 90</math>                  Operating Temperature (<math>^{\circ}\text{C}</math>) -20<math>\sim</math>+70</p>	<p><b>B9650S</b></p>  <p>Size: 10.3*9.6*5mm                  Rated Voltage (VDC) 5                  Operating Voltage (VDC) 4 ~ 7                  Resonant Frequency (KHz) 2.7<math>\pm</math>0.3                  Sound Output at 10 cm (dB) <math>\geq 80</math>                  Operating Temperature (<math>^{\circ}\text{C}</math>) -20<math>\sim</math>+70</p>

**T1033BS**



**Size: 10\*10\*3.3mm**  
Rated Voltage (V) 3.6  
Operating Voltage (V) 2~5  
Resonant Frequency (KHz) 2.8±0.5  
Sound Output at 10cm (dB) ≥95  
Operating Temperature (°C) -20~+70

**T1085S**



**Size: 10\*8.6\*2mm**  
Rated Voltage (V) 3.6  
Operating Voltage (V) 2.5~4.5  
Resonant Frequency (KHz) 2.5±0.5  
Sound Output at 10cm (dB) ≥80  
Operating Temperature (°C) -20~+70

**T1255S**



**Size: Ø12\*5.6mm**  
Rated Voltage (V) 1.5  
Operating Voltage (V) 1~2  
Resonant Frequency (KHz) 2.5±0.5  
Sound Output at 10cm (dB) ≥80  
Operating Temperature (°C) -20~+70

**T1310FS**



**Size: 13\*13\*10mm**  
Rated Voltage (V) 12  
Operating Voltage (V) 8~16  
Resonant Frequency (KHz) 2.4±0.5  
Sound Output at 10cm (dB) Min. 90  
Operating Temperature (°C) -40~+80

**T1370FS**



**Size: 13\*13.8\*6.8mm**  
Rated Voltage (V) 5  
Operating Voltage (V) 3~7  
Resonant Frequency (KHz) 2.4±0.5  
Sound Output at 10cm (dB) Min. 90  
Operating Temperature (°C) -40~+80

**T1411S**



**Size: 14\*11\*3mm**  
Rated Voltage (V) 5  
Operating Voltage (V) 3~7  
Resonant Frequency (KHz) 2.4±0.5  
Sound Output at 10cm (dB) Min. 90  
Operating Temperature (°C) -40~+80

**T5020CS**



**Size: 5.5\*5.5\*2.0mm**  
Rated Voltage (V) 3  
Operating Voltage (V) 2~5  
Resonant Frequency (KHz) 4.0±0.5  
Sound Output at 10cm (dB) ≥ 78  
Operating Temperature (°C) -20~+70

**T5025AS**



**Size: 5.5\*5.5\*2.5mm**  
Rated Voltage (V) 3  
Operating Voltage (V) 2~5  
Resonant Frequency (KHz) 4.0±0.5  
Sound Output at 10cm (dB) ≥ 78  
Operating Temperature (°C) -20~+70

**T5030BS**



**Size: 5.5\*5.5\*3.0mm**  
Rated Voltage (V) 3  
Operating Voltage (V) 2~5  
Resonant Frequency (KHz) 4.0±0.5  
Sound Output at 10cm (dB) ≥ 78  
Operating Temperature (°C) -20~+70

**T7525AS**



**Size: 7.5\*5.5\*2.5mm**  
Rated Voltage (V) 3  
Operating Voltage (V) 2~5  
Resonant Frequency (KHz) 4.0±0.5  
Sound Output at 10cm (dB) ≥ 78  
Operating Temperature (°C) -20~+70

**T8025S**



**Size: 8.0\*8.0\*2.5mm**  
Rated Voltage (V) 3  
Operating Voltage (V) 2~5  
Resonant Frequency (KHz) 4.0±0.5  
Sound Output at 10cm (dB) ≥ 85  
Operating Temperature (°C) -20~+70

**T8530AS**



**Size: 8.5\*8.5\*3.0mm**  
Rated Voltage (V) 3  
Operating Voltage (V) 2~5  
Resonant Frequency (KHz) 4.0±0.5  
Sound Output at 10cm (dB) ≥ 78  
Operating Temperature (°C) -20~+70



# CONNECTORS MANUFACTURER

TOPTEK®  
HARDWARE ELECTRONIC MANUFACTURER



13  
\*  
12

Buzzer



RoHS

SMD Electro-Magnet Transducer

T8536CS



Size: 8.5\*8.5\*3.6mm  
Rated Voltage (V) 3  
Operating Voltage (V) 2~5  
Resonant Frequency (KHz) 2.7±0.5  
Sound Output at 10cm (dB) ≥ 85  
Operating Temperature (°C) -20~+70

T8540AS



Size: 8.5\*8.5\*4.0mm  
Rated Voltage (V) 3.6  
Operating Voltage (V) 2~4  
Resonant Frequency (KHz) 2.7±0.5  
Sound Output at 10cm (dB) ≥ 85  
Operating Temperature (°C) -20~+70

T8835S



Size: 8.8\*8.8\*3.5mm  
Rated Voltage (V) 3.6  
Operating Voltage (V) 2.5~5.5  
Resonant Frequency (KHz) 2.7±0.5  
Sound Output at 10cm (dB) ≥ 88  
Operating Temperature (°C) -20~+70

T9025BS



Size: Ø9.0\*9.0\*2.5mm  
Rated Voltage (V) 3.6  
Operating Voltage (V) 2~5  
Resonant Frequency (KHz) 2.7±0.5  
Sound Output at 10cm (dB) ≥ 85  
Operating Temperature (°C) -20~+70

T9027BS



Size: Ø9.0\*9.0\*2.7mm  
Rated Voltage (V) 3  
Operating Voltage (V) 2~5  
Resonant Frequency (KHz) 2.7±0.5  
Sound Output at 10cm (dB) ≥ 85  
Operating Temperature (°C) -20~+70

T9032BS



Size: Ø9.0\*9.0\*3.2mm  
Rated Voltage (V) 3  
Operating Voltage (V) 2~4  
Resonant Frequency (KHz) 2.7±0.5  
Sound Output at 10cm (dB) ≥ 92  
Operating Temperature (°C) -20~+70

T9040BS



Size: Ø9.0\*9.0\*4.0mm  
Rated Voltage (V) 3  
Operating Voltage (V) 2~4  
Resonant Frequency (KHz) 2.7±0.5  
Sound Output at 10cm (dB) ≥ 80  
Operating Temperature (°C) -20~+70

T9045AS



Size: 9.0\*9.0\*4.5mm  
Rated Voltage (V) 5  
Operating Voltage (V) 2~5  
Resonant Frequency (KHz) 2.7±0.5  
Sound Output at 10cm (dB) ≥ 88  
Operating Temperature (°C) -40~+80

T9045S



Size: Ø9.0\*9.0\*4.5mm  
Rated Voltage (V) 3  
Operating Voltage (V) 2~5  
Resonant Frequency (KHz) 2.7±0.5  
Sound Output at 10cm (dB) ≥ 88  
Operating Temperature (°C) -40~+80

T9040BS



Size: Ø9.6\*9.6\*3.6mm  
Rated Voltage (V) 3  
Operating Voltage (V) 2~5  
Resonant Frequency (KHz) 2.7±0.5  
Sound Output at 10cm (dB) ≥ 88  
Operating Temperature (°C) -40~+80

**T1310FS**



**Size: 10\*10\*3mm**  
Rated Voltage (Vp-p) 3  
Operating Voltage (Vp-p) 1~30  
Resonant Frequency (KHz) 4.1±0.5  
Sound Output at 10cm (dB) ≥ 70  
Operating Temperature (°C) -20~+70

**T1109S**



**Size: 11\*9\*1.7mm**  
Rated Voltage (Vp-p) 5  
Operating Voltage (Vp-p) 1~25  
Resonant Frequency (KHz) 4.1±0.5  
Sound Output at 10cm (dB) ≥ 73  
Operating Temperature (°C) -20~+70

**T1225S**



**Size: 15\*15\*2.5mm**  
Rated Voltage (Vp-p) 5  
Operating Voltage (Vp-p) 1~25  
Resonant Frequency (KHz) 4.1±0.5  
Sound Output at 10cm (dB) ≥ 75  
Operating Temperature (°C) -20~+70

**T1227S**



**Size: 12\*12\*2.7mm**  
Rated Voltage (Vp-p) 3  
Operating Voltage (Vp-p) 1~25  
Resonant Frequency (KHz) 4.0±0.5  
Sound Output at 10cm (dB) ≥ 75  
Operating Temperature (°C) -20~+70

**T1230S**



**Size: 12\*12\*3mm**  
Rated Voltage (Vp-p) 3  
Operating Voltage (Vp-p) 1~25  
Resonant Frequency (KHz) 4.0±0.5  
Sound Output at 10cm (dB) ≥ 75  
Operating Temperature (°C) -20~+70

**T1325S**



**Size: 12\*12\*2.5mm**  
Rated Voltage (Vp-p) 5  
Operating Voltage (Vp-p) 1~25  
Resonant Frequency (KHz) 4.1±0.5  
Sound Output at 10cm (dB) ≥ 85  
Operating Temperature (°C) -20~+70

**T1410S**



**Size: 14.8\*14.2\*10.7mm**  
Rated Voltage (Vp-p) 10  
Operating Voltage (Vp-p) 1~20  
Resonant Frequency (KHz) 4.3±0.5  
Sound Output at 10cm (dB) ≥ 90  
Operating Temperature (°C) -20~+70

**T1440S**



**Size: 14.9\*14.1\*4.5mm**  
Rated Voltage (Vp-p) 5  
Operating Voltage (Vp-p) 1~20  
Resonant Frequency (KHz) 4.0±0.5  
Sound Output at 10cm (dB) ≥ 80  
Operating Temperature (°C) -20~+70

**T1575CS**



**Size: 16\*14.8\*7.5mm**  
Rated Voltage (Vp-p) 7  
Operating Voltage (Vp-p) 1~30  
Resonant Frequency (KHz) 3.65±0.5  
Sound Output at 10cm (dB) ≥ 90  
Operating Temperature (°C) -40~+80

**T1625BS**



**Size: 16\*16\*2.5mm**  
Rated Voltage (Vp-p) 3  
Operating Voltage (Vp-p) 1~25  
Resonant Frequency (KHz) 4.0±0.5  
Sound Output at 10cm (dB) ≥ 75  
Operating Temperature (°C) -20~+75

**T1628S**



**Size: 16.7\*16\*2.9mm**  
Rated Voltage (Vp-p) 5  
Operating Voltage (Vp-p) 1~25  
Resonant Frequency (KHz) 4.0±0.5  
Sound Output at 10cm (dB) ≥ 75  
Operating Temperature (°C) -30~+80

**T1750S**



**Size: 17.6\*17\*5.3mm**  
Rated Voltage (Vp-p) 5  
Operating Voltage (Vp-p) 1~20  
Resonant Frequency (KHz) 4.0±0.5  
Sound Output at 10cm (dB) ≥ 75  
Operating Temperature (°C) -20~+70

# CONNECTORS MANUFACTURER

**TOPTEK®**  
HARDWARE ELECTRONIC MANUFACTURER



13  
\*  
14

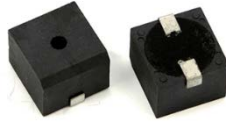
SMD Piezo Transducer

**T1760S**



**Size:  $\varnothing$ 17\*6mm**  
Rated Voltage (Vp-p) 12  
Operating Voltage (Vp-p) 1~30  
Resonant Frequency (KHz) 4.0 $\pm$ 0.5  
Sound Output at 10cm (dB)  $\geq$  90  
Operating Temperature (°C) -20~+75

**T1812S**



**Size: 17.9\*17.9\*12mm**  
Rated Voltage (Vp-p) 5  
Operating Voltage (Vp-p) 1~25  
Resonant Frequency (KHz) 3.0 $\pm$ 0.5  
Sound Output at 10cm (dB)  $\geq$  86  
Operating Temperature (°C) -20~+70

**T1870S**



**Size:  $\varnothing$ 18.4\*7.2mm**  
Rated Voltage (Vp-p) 3.6  
Operating Voltage (Vp-p) 1~25  
Resonant Frequency (KHz) 2.0 $\pm$ 0.5  
Sound Output at 10cm (dB)  $\geq$  75  
Operating Temperature (°C) -20~+70

**T2270AS**



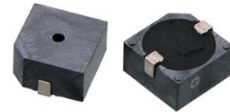
**Size:  $\varnothing$ 22.1\*7mm**  
Rated Voltage (Vp-p) 12  
Operating Voltage (Vp-p) 1~30  
Resonant Frequency (KHz) 4.0 $\pm$ 0.5  
Sound Output at 10cm (dB)  $\geq$  95  
Operating Temperature (°C) -20~+70

**T2290S**



**Size:  $\varnothing$ 22\*9mm**  
Rated Voltage (Vp-p) 4  
Operating Voltage (Vp-p) 1~30  
Resonant Frequency (KHz) 4.8 $\pm$ 0.5  
Sound Output at 10cm (dB)  $\geq$  90  
Operating Temperature (°C) -20~+60

**T2311S**



**Size: 23\*23\*10.8mm**  
Rated Voltage (Vp-p) 9  
Operating Voltage (Vp-p) 1~25  
Resonant Frequency (KHz) 4.0 $\pm$ 0.5  
Sound Output at 10cm (dB)  $\geq$  100  
Operating Temperature (°C) -20~+70

Buzzer



RoHS


**S10T-40TR-P**



**Size:  $\varnothing 9.9 \times 7$ mm**  
Sensitivity min. -70dBV/u bar  
Detectable Range 0.2-6 m  
Nominal Frequency (KHz) 40  
Operating Temperature (°C) -30~+85

**S10T-40TR-P-2550**



**Size:  $\varnothing 10 \times 7.1$ mm**  
Sensitivity min. -70dBV/u bar  
Detectable Range 0.2-6 m  
Nominal Frequency (KHz) 40  
Operating Temperature (°C) -30~+85

**S10T-40TR-WA**



**Size:  $\varnothing 10 \times 7$ mm**  
Sensitivity min. -70dBV/u bar  
Detectable Range 0.2-6 m  
Nominal Frequency (KHz) 40  
Operating Temperature (°C) -30~+85

**S12T-40TR-BA**



**Size:  $\varnothing 12.5 \times 9.5$ mm**  
Sensitivity min. -70dBV/u bar  
Detectable Range 0.2-6 m  
Nominal Frequency (KHz) 40  
Operating Temperature (°C) -30~+85

**S12T-40TR-WA**



**Size:  $\varnothing 12.6 \times 9.5$ mm**  
Sensitivity min. -75dBV/u bar  
Detectable Range min. 12 m  
Nominal Frequency (KHz) 40  
Operating Temperature (°C) -30~+85

**S14F-40FS-BA**



**Size:  $\varnothing 14.5 \times 9$ mm**  
Sensitivity min. -75dBV/u bar  
Detectable Range above 3 m  
Nominal Frequency (KHz) 40  
Operating Temperature (°C) -30~+85

**S14T-40FS-BA-1**



**Size:  $\varnothing 14 \times 9$ mm**  
Sensitivity min. -75dBV/u bar  
Detectable Range 0.3~1.5 m  
Nominal Frequency (KHz) 40  
Operating Temperature (°C) -30~+85

**S16F-40FS-BA**



**Size:  $\varnothing 16 \times 10$ mm**  
Sensitivity min. -75dBV/u bar  
Detectable Range 0.2~4 m  
Nominal Frequency (KHz) 40  
Operating Temperature (°C) -30~+85

**S16T-40TR-P**



**Size:  $\varnothing 16 \times 12$ mm**  
Sensitivity min. -65dBV/u bar  
Detectable Range 0.7~18 m  
Nominal Frequency (KHz) 40  
Operating Temperature (°C) -30~+85

**S16T-40TR-WA**



**Size:  $\varnothing 16 \times 12$ mm**  
Sensitivity min. -65dBV/u bar  
Detectable Range 0.7~18 m  
Nominal Frequency (KHz) 40  
Operating Temperature (°C) -30~+85

**S18F-40FS-BA**



**Size:  $\varnothing 18 \times 12$ mm**  
Sensitivity min. -70dBV/u bar  
Detectable Range 0.2~4 m  
Nominal Frequency (KHz) 40  
Operating Temperature (°C) -30~+85

**S25F-40FS-WA**



**Size:  $\varnothing 25 \times 12$ mm**  
Sensitivity min. -70dBV/u bar  
Detectable Range above 6 m  
Nominal Frequency (KHz) 40  
Operating Temperature (°C) -30~+85



# CONNECTORS MANUFACTURER

**TOPTTEK®**  
HARDWARE ELECTRONIC MANUFACTURER






13  
\*  
16

**B**uzzer



**RoHS**

Ultrasonic Sensors	<b>S110A1-AL</b> 	<b>S10T-40FS-WA</b> 	<b>S25T-40TR-WA</b> 
	Size: $\varnothing 37 * 17.2\text{mm}$ Sensitivity at 40cm -54 dB Detectable Range 0.4~2.5 m Nominal Frequency (KHz) 110 Operating Temperature (°C) -30~+85	Size: $\varnothing 10 * 8\text{mm}$ Sensitivity min.-80dBV/u bar Detectable Range above 2m Nominal Frequency (KHz) 40 Operating Temperature (°C) -30~+85	Size: $\varnothing 25 * 13.8\text{mm}$ Sensitivity min.-70dBV/u bar Detectable Range above 6m Nominal Frequency (KHz) 40 Operating Temperature (°C) -30~+85