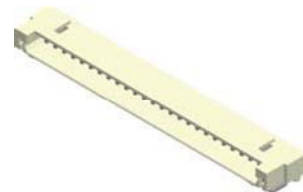
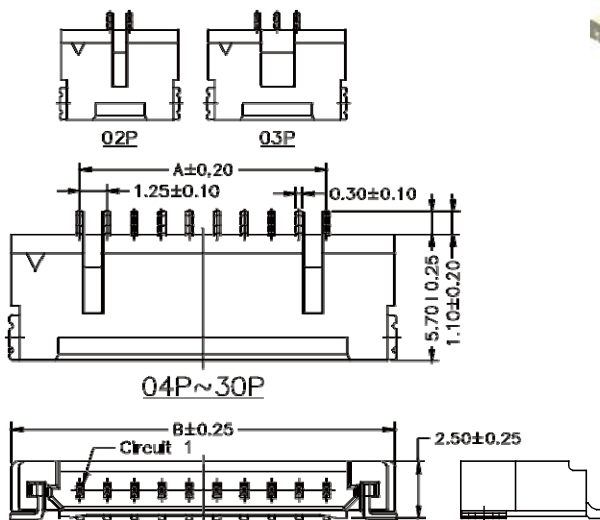
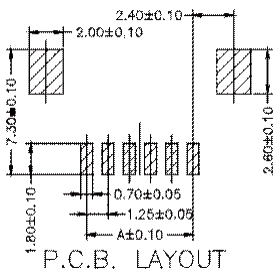


1.25mm Wafer SMT Right Angle / SMT Straight Type

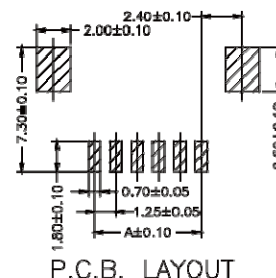
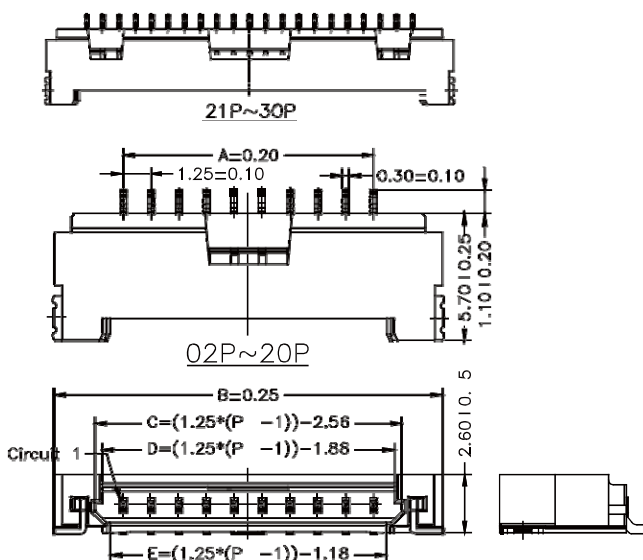
Specifications

Current Rating: 1A AC,DC
Voltage Rating: 150V AC,DC
Temperature Range: -25°C to +85°C
Contact Resistance: 30mΩ Max
Insulation Resistance: 500MΩ Min
Withstanding Voltage: 500V AC/minute
Terminal: Brass / Tin Plated
Solder Tabs: Brass / Tin Plated
Material: Nylon 6T, UL94V-0

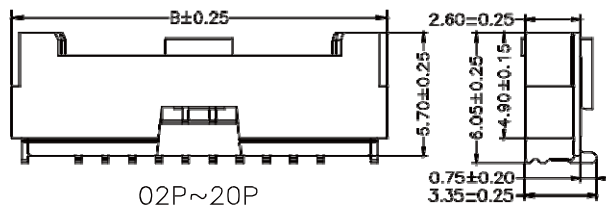
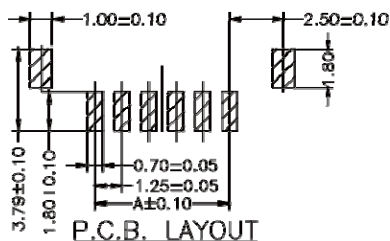
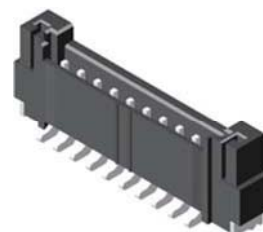
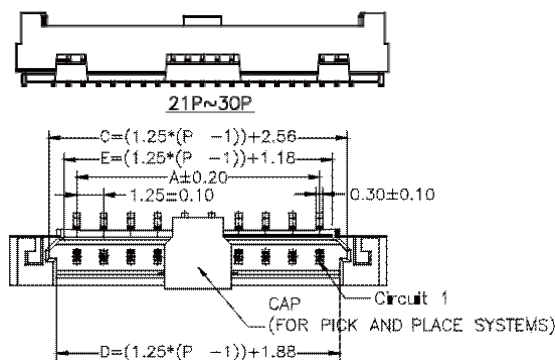


Part No.:1253MR-XXTW-U

No. of Contacts	Dimensions	
	A	B
2	1.25	7.45
3	2.50	8.70
4	3.75	9.95
5	5.00	11.20
6	6.25	12.45
7	7.50	13.70
8	8.75	14.95
9	10.00	16.20
10	11.25	17.45
11	12.50	18.70
12	13.75	19.95
13	15.00	21.20
14	16.25	22.45
15	17.50	23.70
20	23.75	29.95
21	25.00	31.20
25	30.00	36.20
30	36.25	42.45



Part No.:1253MRA-XXTB-U



Part No.:1253MS-XXTB-U