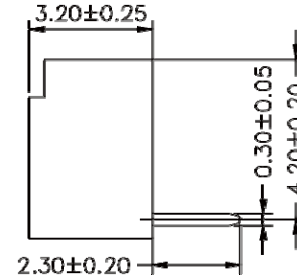
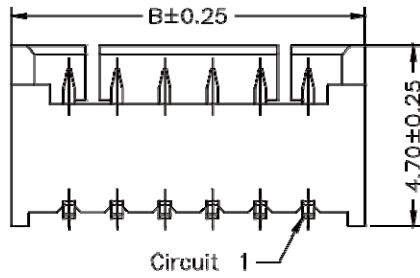
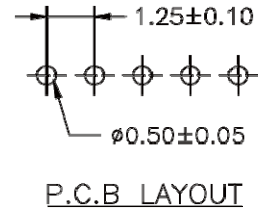
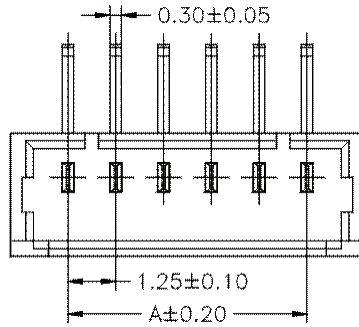
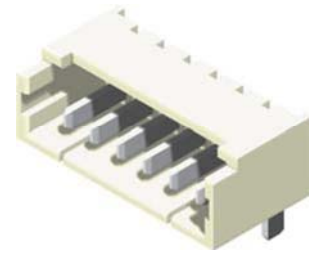


1.25mm Wafer Right Angle & Straight Type

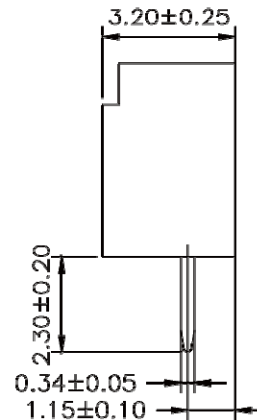
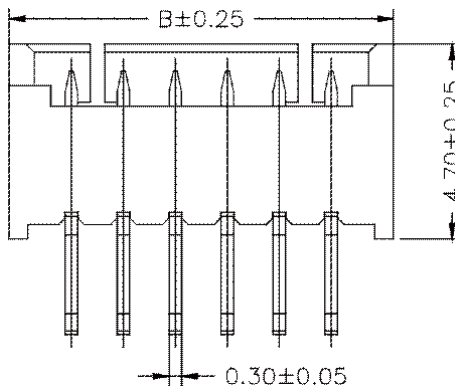
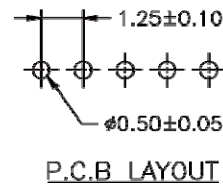
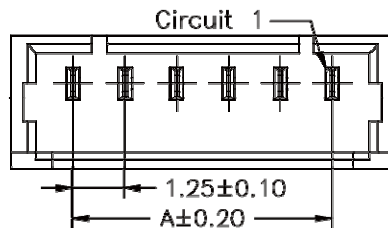
Specifications
 Current Rating: 1A AC,DC
 Voltage Rating: 125V AC,DC
 Temperature Range: -25°C to +85°C
 Contact Resistance: 20mΩ Max
 Insulation Resistance: 100MΩ Min
 Withstanding Voltage: 500V AC/minute
 Terminal: Phosphor Bronze / Tin Plated
 Material: Nylon 6T,UL94V-0



Part No.:1250R-XXTW-U

Housing Wafer Terminal

No. of Contacts	Dimensions	
	A	B
2	1.25	4.25
3	2.50	5.50
4	3.75	6.75
5	5.00	8.00
6	6.25	9.25
7	7.50	10.50
8	8.75	11.75
9	10.00	13.00
10	11.25	14.25
11	12.50	15.50
12	13.75	16.75
13	15.00	18.00
14	16.25	19.25
15	17.50	20.50
16	18.75	21.75
17	20.00	23.00
18	21.25	24.25



Part No.:1250S-XXTW-U