

PIN HEADER 1.0mm

Pin Header 1.0mm 1 Row H=3.70mm SMT R/A Type

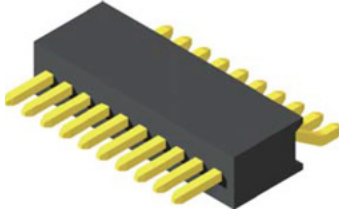


Specifications

Current Rate: 1 AMP | Insulation Resistance: 1000MΩ | Max. Contact Resistance: 20mΩ |
 Max. Dielectric Voltage: 500V AC for one minute | Operation Temperature: -40°C to +105°C

Material

Insulator: Polyester, UL 94V-0 | Standard: Nylon 6T | Terminal: Copper Alloy | Plating: Gold Plated



ORDER INFORMATION

P H 5 M R 3 7 - 1 X X X X X X Z X

No. of Pins
Pr Row

1x40

Insulator
Material
Option

A= BK-PBT
 B= BK-PA66
 C= BK-PA6T
 D= BK-PA46
 F= BK-LCP

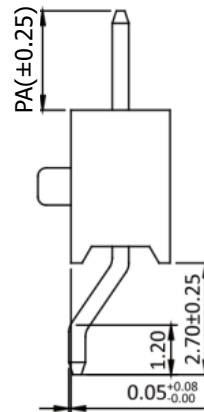
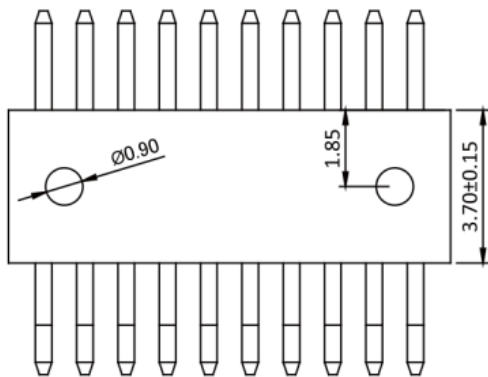
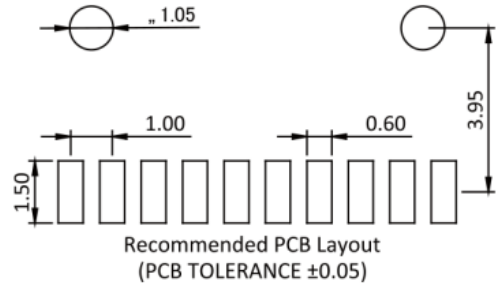
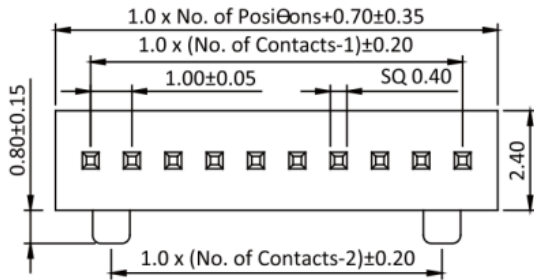
Post
W= With Post
N= W/O Post

Contact Plating

G0= Gold Flash
 G2= 5U" Gold
 G3= 10U" Gold
 G4= 15U" Gold
 G5= 30U" Gold
 S0= Gold Flash/Tin
 SN= Tin

Packing

0= PE Bag
 A= Tray
 T= Tube
 P= Tube+Cap
 R= Reel+Cap



ITEM	PA
Standard	2.40
Alternate	