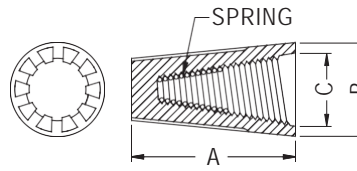
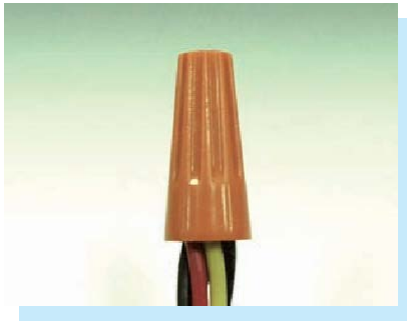


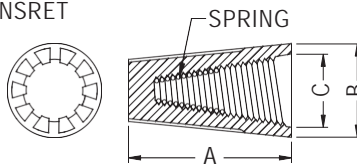
# SCREW-ON CONNECTOR

- ◆ MATERIAL:PP
- ◆ COLOR:ORANGE
- ◆ UNIT:mm
- ◆ WITE SPRINGINSRET



PART NO	WIRE SIZE RANGE		A	B	C	PACKAGE
	MAX.	MIN.				
P1	#18X2	#24X2	15.2	8.6	6.5	1000
P2	#16X3	#20X3	17.7	9.9	7.1	
P3	#14X3	#18X3	22.0	12.4	9.8	500
P4		#16X3	24.6	14.0	11.0	

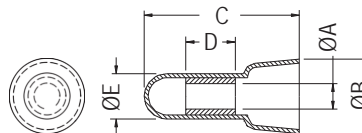
- ◆ MATERIAL:PBT(UL) 94V-0
- ◆ COLOR:BLACK
- ◆ UNIT:mm
- ◆ WITE SPRINGINSRET



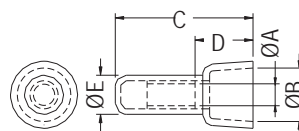
PART NO	A	B	C	SUITABLE WIRES A.W.G	PACKAGE
P1B	15.2	8.6	6.5	22-18	1000
P3B	21.8	12.7	9.6	22-14	500

# CLOSE END CONNECTOR

- ◆ HOUSING MAT'L:NYLON 66 (UL) 94V-2
- ◆ METAL MAT'L:TIN PLATEDALUMINUM/  
TIN PLATED COPPER
- ◆ COLOR:NATURAL
- ◆ UNIT:mm



PARTNO	WIRE RANGE		A	B	C	D	E	PACKAGE
CE1	#22-18	1.25 mm <sup>2</sup>	2.6	7.8	18.0	7.0	5.0	1000
CE2	#22-14	2 mm <sup>2</sup>	3.1	9.5	20.0			
CE5	#22-10	5.5 mm <sup>2</sup>	4.4	12.5	25.5	8.4	7.6	
CE8	#8	8 mm <sup>2</sup>	5.2	14.2	27.7	8.5	9.5	500



PARTNO	WIRE RANGE		A	B	C	D	E	PACKAGE
C3	#22-16	1.25 mm <sup>2</sup>	2.5	7.9	19.2	7.2	5.1	1000
C4	#16-14	2 mm <sup>2</sup>	3.2	8.2	20.7	8.5	5.7	
C5	#12-10	5.5 mm <sup>2</sup>	4.2	10.6	24.8	10.7	7.3	
C8	#8	8 mm <sup>2</sup>	5.0	12.2	27.1	12.5	9.2	500

