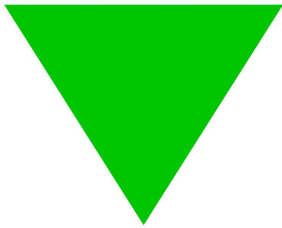


PLASTIC PARTS for PCB

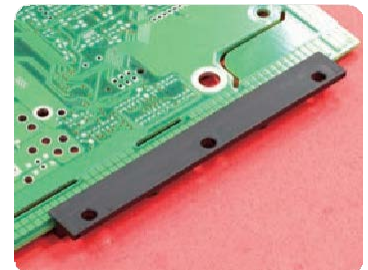
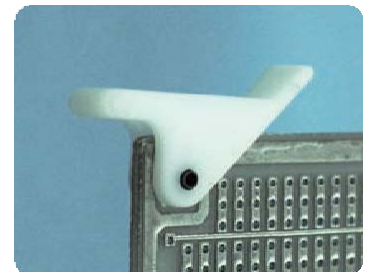
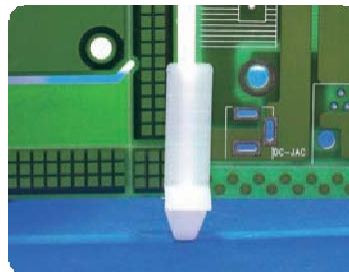
SCREW CARD GUIDE PULLER

TOPTTEK®

HARDWARE ELECTRONIC MANUFACTURER



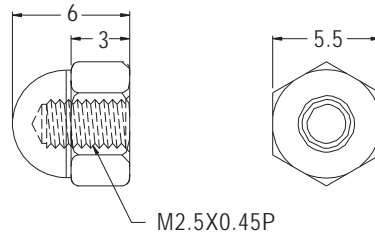
www.toptek-co.com



SCREW BONNET



- ◆ MATERIAL: NYLON 66 (UL)
- ◆ FLAME CLASS: 94V-2/94V-0
- ◆ COLOR: NATURAL/BLACK
- ◆ UNIT: mm

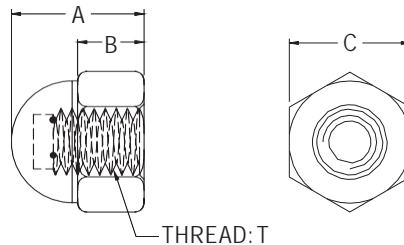


PART NO	PACKAGE
MP-2.5	1000

SCREW BONNET



- ◆ MATERIAL: NYLON 66 (UL)
- ◆ FLAME CLASS: 94V-2/94V-0
- ◆ COLOR: NATURAL/BLACK
- ◆ UNIT: mm

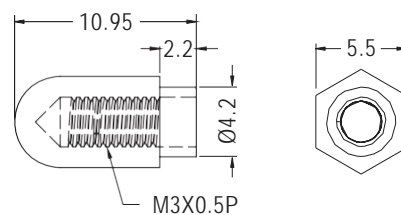


PART NO	A	B	C	T	PACKAGE
MP-3	6.0	3.0	5.5	M3X0.5P	1000
MP-4	8.0	4.0	7.7	M4X0.7P	

SCREW BONNET



- ◆ MATERIAL: NYLON 66 (UL)
- ◆ FLAME CLASS: 94V-2/94V-0
- ◆ COLOR: NATURAL/BLACK
- ◆ UNIT: mm

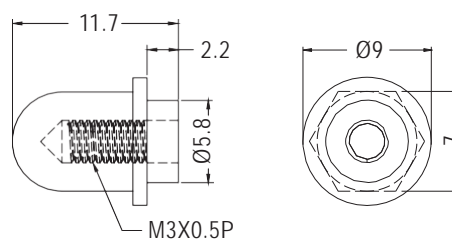


PART NO	PACKAGE
MP-5	1000

SCREW BONNET



- ◆ MATERIAL: NYLON 66 (UL)
- ◆ FLAME CLASS: 94V-2/94V-0
- ◆ COLOR: NATURAL/BLACK
- ◆ UNIT: mm

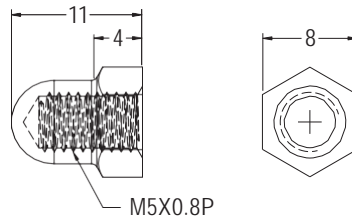


PART NO	PACKAGE
MP-26	1000



SCREW BONNET

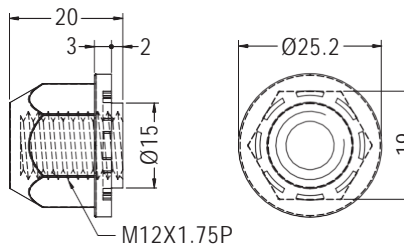
- ◆ MATERIAL: NYLON 66 (UL)
- ◆ FLAME CLASS: 94V-2/94V-0
- ◆ COLOR: NATURAL/BLACK
- ◆ UNIT: mm



PART NO	PACKAGE
MP5-1	1000

SCREW BONNET

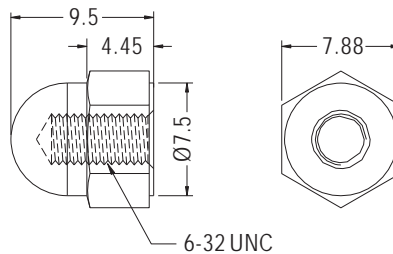
- ◆ MATERIAL: NYLON 66 (UL)
- ◆ FLAME CLASS: 94V-2/94V-0
- ◆ COLOR: NATURAL/BLACK
- ◆ UNIT: mm



PART NO	PACKAGE
MP-12	1000

SCREW BONNET

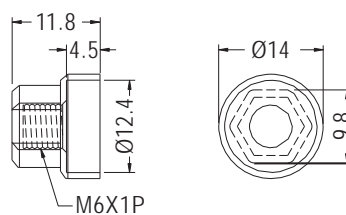
- ◆ MATERIAL: NYLON 66 (UL)
- ◆ FLAME CLASS: 94V-2/94V-0
- ◆ COLOR: NATURAL/BLACK
- ◆ UNIT: mm



PART NO	PACKAGE
MP-632	1000

SCREW BONNET

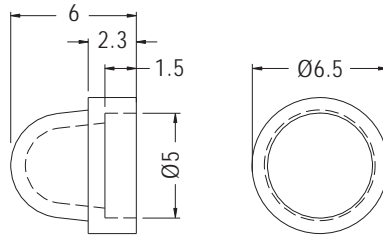
- ◆ MATERIAL: PBT
- ◆ COLOR: BLACK
- ◆ UNIT: mm



PART NO	PACKAGE
MP6-1	1000

SCREW BONNET

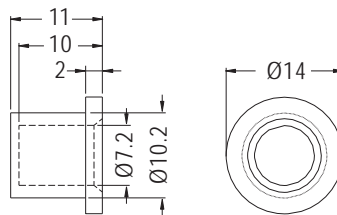
- ◆ MATERIAL: NYLON 66 (UL)
- ◆ FLAME CLASS: 94V-2/94V-0
- ◆ COLOR: NATURAL/BLACK
- ◆ UNIT: mm



PART NO	PACKAGE
SWV-4	1000

SCREW BONNET

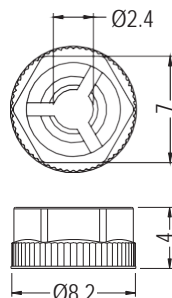
- ◆ MATERIAL: SILICON RUBBER
- ◆ COLOR: BLACK/GRAY
- ◆ UNIT: mm



PART NO	PACKAGE
TF-2501	1000

NUT

- ◆ MATERIAL: NYLON 66 (UL)
- ◆ FLAME CLASS: 94V-2/94V-0
- ◆ COLOR: NATURAL/BLACK
- ◆ UNIT: mm

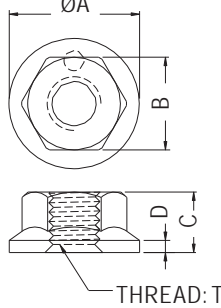


PART NO	PACKAGE
MOA3	1000

NUT



- ◆ MATERIAL: NYLON 66 (UL)
- ◆ FLAME CLASS: 94V-2/94V-0
- ◆ COLOR: NATURAL/BLACK
- ◆ UNIT: mm

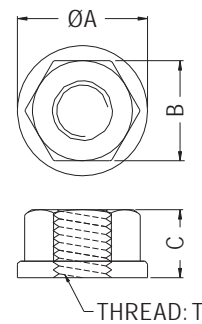


PART NO	A	B	C	D	T	PACKAGE
MO-3	8.5	5.4	3.2	0.8	M3X0.5P	1000
MO-4	9.7	6.9	4.5	0.9	M4X0.7P	
MO-632	10.6	7.8	4.2	1.0	6-32 UNC	

NUT



- ◆ MATERIAL: NYLON 66 (UL)
- ◆ FLAME CLASS: 94V-2/94V-0
- ◆ COLOR: NATURAL/BLACK/GRAY
- ◆ UNIT: mm

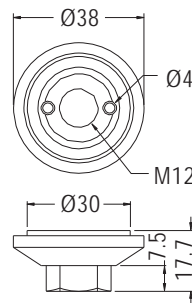


PART NO	A	B	C	T	PACKAGE
MO-6-68	13.0	10.0	6.8	M6X1P	2000
MO-8-85	17.0	13.0	8.5	M8X1.25P	1000

NUT



- ◆ MATERIAL: NYLON 66 (UL)
- ◆ FLAME CLASS: 94V-2/94V-0
- ◆ COLOR: NATURAL/WHITE/BLACK
- ◆ UNIT: mm

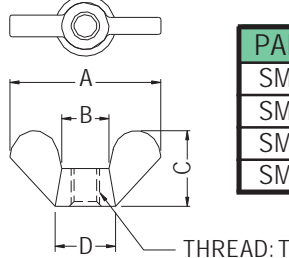


PART NO	PACKAGE
CAM-12	100

NUT



- ◆ MATERIAL: NYLON 66 (UL)
- ◆ FLAME CLASS: 94V-2/94V-0
- ◆ COLOR: NATURAL/BLACK
- ◆ UNIT: mm

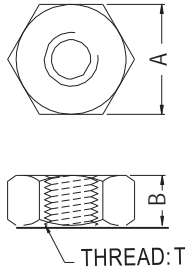


PART NO	A	B	C	D	T	PACKAGE
SMO-3	15.96	5.0	8.0	6.4	M3X0.5P	1000
SMO-4	21.58	8.0	10.1	10.0	M4X0.7P	
SMO-632	22.0	8.0	10.5	10.0	6-32 UNC	
SMO-832	21.0	8.0	10.0	10.0	8-32 UNC	



NUT

- ◆ MATERIAL: NYLON 66 (UL)/PC (UL)
- ◆ FLAME CLASS: 94V-2/94V-0
- ◆ COLOR: NATURAL
- ◆ UNIT: mm

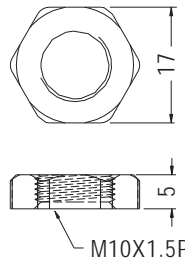


PART NO	A	B	T	PACKAGE
M-2	3.95	1.4	M2X0.4P	2000
M-2L	3.95	3.0	M2X0.4P	
M-2.6	5.0	2.0	M2.6X0.45P	
M-3	5.5	2.7	M3X0.5P	
M-3S	5.4	2.3	M3X0.5P	
M-3.5	5.9	2.8	M3.5X0.6P	1000
M-4	6.9	3.3	M4X0.7P	
M-4F	7.0	2.5	M4X0.7P	
M-5	8.0	4.4	M5X0.8P	
M-6	10.0	5.0	M6X1.0P	
S4-40	6.4	2.5	4-40UNC	
S6-32	7.9	3.2	6-32UNC	

NUT



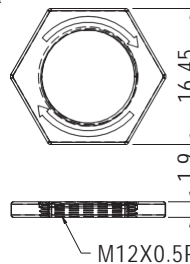
- ◆ MATERIAL: NYLON 66 (UL)
- ◆ FLAME CLASS: 94V-2/94V-0
- ◆ COLOR: NATURAL/BLACK
- ◆ UNIT: mm



PART NO	PACKAGE
M-10	500

NUT

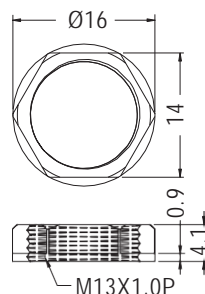
- ◆ MATERIAL: NYLON 66 (UL)
- ◆ FLAME CLASS: 94V-2/94V-0
- ◆ COLOR: NATURAL/BLACK
- ◆ UNIT: mm



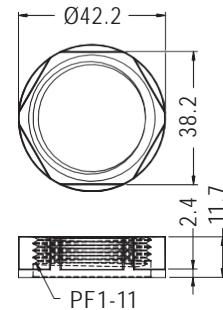
PART NO	PACKAGE
M12-2	2000

NUT

- ◆ MATERIAL: NYLON 66 (UL)
- ◆ FLAME CLASS: 94V-2/94V-0
- ◆ COLOR: NATURAL/BLACK
- ◆ UNIT: mm



PART NO	PACKAGE
MO-13	1000



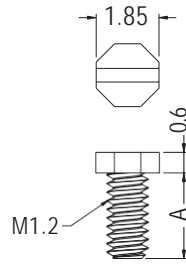
PART NO	PACKAGE
MO-25.4	100



SCREW



- ◆ MATERIAL:NYLON 66 (UL)
- ◆ FLAME CLASS:94HB
- ◆ COLOR:BLACK
- ◆ UNIT:mm

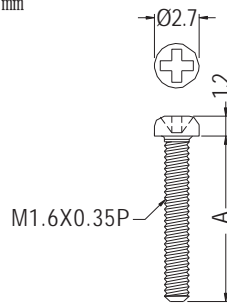


PART NO	A	PACKAGE
M1.2-2.5	2.5	1000
M1.2-3	3.0	
M1.2-4	4.0	
M1.2-5	5.0	
M1.2-6	6.0	

SCREW



- ◆ MATERIAL:NYLON 66 (UL)
- ◆ FLAME CLASS:94HB
- ◆ COLOR:BLACK
- ◆ UNIT:mm

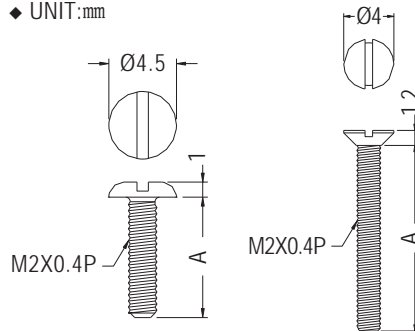


PART NO	A	PACKAGE
M1.6-3	3.0	1000
M1.6-4	4.0	
★ M1.6-4.5	4.5	
M1.6-5	5.0	
M1.6-6	6.0	
M1.6-7	7.0	
M1.6-8	8.0	
M1.6-9	9.0	
M1.6-10	10.0	

SCREW



- ◆ MATERIAL:NYLON 66 (UL)
- ◆ FLAME CLASS:94V-2/94V-0
- ◆ COLOR:NATURAL/BLACK
- ◆ UNIT:mm



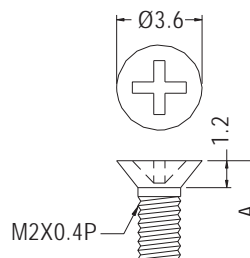
FOR M12-14.8F

PART NO	A	PACKAGE
M12-6	6.0	1000
M12-8	8.0	
M12-10	10.0	
M12-12	12.0	
M12-14.8F	14.8	

SCREW



- ◆ MATERIAL:PC (UL)
- ◆ FLAME CLASS:94V-2
- ◆ COLOR:NATURAL
- ◆ UNIT:mm

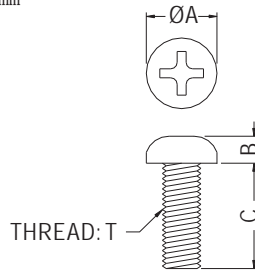


PART NO	A	PACKAGE
M2-4.5F	4.5	2000
M2-5.5F	5.5	
M2-6.5F	6.5	
M2-7.5F	7.5	
M2-8.5F	8.5	



SCREW

- ◆ MATERIAL: NYLON 66 (UL)/PC (UL)
- ◆ FLAME CLASS: 94V-2/94V-0
- ◆ COLOR: NATURAL
- ◆ UNIT: mm



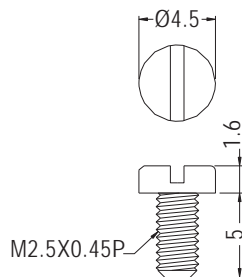
PART NO	A	B	C	T	PACKAGE
M2-3	3.3	1.4	3.0	M2X0.4P	2000
M2-4			4.0		
M2-5			5.0		
M2-6			6.0		
M2-6.5			6.5		
M2-8			8.0		
M2-10			10.0		
M2-12			12.0		
M2-15			15.0		
M2.5-4			4.3		
M2.5-5	5.0				
M2.5-6	6.0				
M2.5-8	8.0				
M2.5-10	10.0				
M2.5L-13	6.3	13.0	M2.6X0.45P	2000	
M2.6-4	4.3	4.0			
M2.6-5		5.0			
M2.6-6		6.0			
M2.6-8		8.0			
M2.6-10		10.0			
M3-4	5.5	2.1	4.0	M3X0.5P	1000
M3-5			5.0		
M3-6			6.0		
M3-8			8.0		
M3-10			10.0		
M3-12			12.0		
M3-15			15.0		
M3-17			17.0		

PART NO	A	B	C	T	PACKAGE	
M3-18	5.5	2.1	18.0	M3X0.5P	1000	
M3-20			20.0			
M3-25			25.0			
M3-30			30.0			
M4-6	7.0	2.5	6.0	M4X0.7P	1000	
M4-8			8.0			
M4-10			10.0			
M4-12			12.0			
M4-14			14.0			
M4-16			16.0			
M4-20			20.0			
M4-25			25.0			
M4-30	30.0					
M4-35	35.0	9.1	3.6	20.0	M5X0.8P	2000
M5-20						
R440-6	5.2	2.4	6.4	4-40 UNC	1000	
R440-8			8.0			
R440-9			9.5			
R440-12			12.7			
R440-15			15.5			
R440-4S	5.8	1.8	4.75	6-32 UNC	2000	
R632-6	6.7	2.5	6.35			
R632-8			8.0			
R632-9			9.5			
R632-12			12.7			
R632-15			15.9			
R632-19			19.1			

SCREW



- ◆ MATERIAL: NYLON 66 (UL)
- ◆ FLAME CLASS: 94V-2/94V-0
- ◆ COLOR: NATURAL/BLACK
- ◆ UNIT: mm

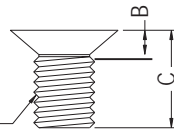


PART NO	PACKAGE
MI2.5-5	1000



SCREW

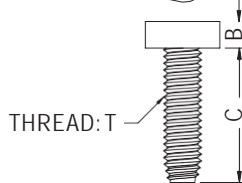
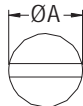
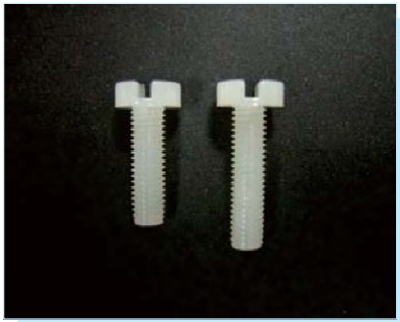
- ◆ MATERIAL: NYLON 66 (UL)/PC (UL)
- ◆ FLAME CLASS: 94V-2/94V-0
- ◆ COLOR: NATURAL/BLACK
- ◆ UNIT: mm



PART NO	A	B	C	T	PACKAGE
M3-5F	5.3	1.2	4.8	M3X0.5P	1000
M3-5.3F	5.3	1.6	5.0		
M3-6F	5.6	1.6	6.0		
M3-8F			8.0		
M3-10F			10.0		
M3-12F			12.0		
M3-14F			14.0		
M3-4.2F	6.0	1.7	4.2	2000	
M4-8F	7.6	2.0	8.0	M4X0.7P	1000
M4-10F			10.0		
M4-12F			12.0		
M4-14F			14.0		
M4-16F			16.0		
M4-18F	7.65	2.7	18.0	M5X0.8P	1000
M5-15F	9.1	9.1	14.8		

SCREW

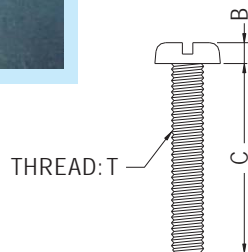
- ◆ MATERIAL: NYLON 66 (UL)
- ◆ FLAME CLASS: 94V-2/94V-0
- ◆ COLOR: NATURAL/BLACK
- ◆ UNIT: mm



PART NO	A	B	C	T	PACKAGE
MI3-5N	5.5	2.0	5.0	M3X0.5P	1000
MI3-6N			6.0		
MI3-8N			8.0		
MI3-10N			10.0		
MI3-12N			12.0		
MI 4-10N	7.0	2.7	10.0	M4X0.7P	1000

SCREW

- ◆ MATERIAL: NYLON 66 (UL)/PC (UL)
- ◆ FLAME CLASS: 94V-2/94V-0
- ◆ COLOR: NATURAL
- ◆ UNIT: mm



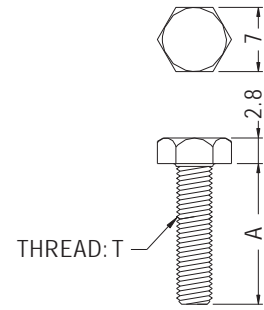
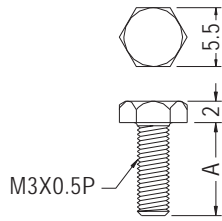
PART NO	A	B	C	T	PACKAGE
M3.5-10	6.9	2.2	10.0	M3.5X0.6P	1000
M3.5-15			15.0		
M3.5-20			20.0		
M3.5-25			25.0		
M3.5-30			30.0		
S440-6	5.2	2.1	6.4	4-40 UNC	2000
S440-8			8.0		
S440-9			9.5		
S440-12			12.7		
S440-15			15.5		
S632-6	6.7	2.5	6.35	6-32 UNC	2000
S632-8			8.0		
S632-9			9.5		
S632-12			12.7		
S632-15			15.9		
S632-19			19.1		
S632-25			25.4		
S632-28			28.0		



SCREW



- ◆ MATERIAL: NYLON 66 (UL)
- ◆ FLAME CLASS: 94V-2/94V-0
- ◆ COLOR: NATURAL/BLACK
- ◆ UNIT: mm

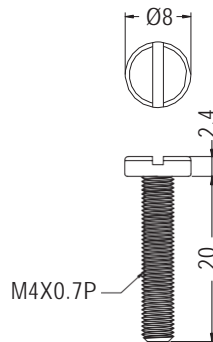


PART NO	A	PACKAGE
STM3-6	6.0	2000
STM3-8	8.0	
STM3-10	10.0	
STM3-12	12.0	

PART NO	A	T	PACKAGE
STM4-6	6.0	M4X0.7P	2000
STM4-8	8.0		
STM4-10	10.0		
STM4-12	12.0		
STM632-6	6.35	6-32 UNC	
STM632-8	8.0		
STM632-9	9.5		
STM632-12	12.7		

SCREW

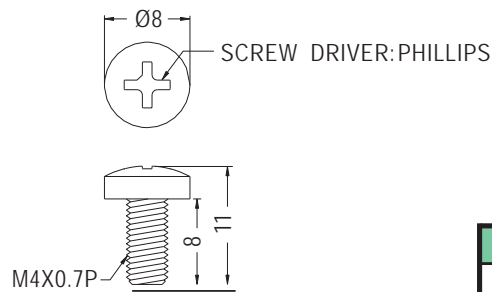
- ◆ MATERIAL: NYLON 66 (UL)
- ◆ FLAME CLASS: 94V-2/94V-0
- ◆ COLOR: NATURAL/BLACK
- ◆ UNIT: mm



PART NO	PACKAGE
MIL4-20	1000

SCREW

- ◆ MATERIAL: NYLON 66 (UL)
- ◆ FLAME CLASS: 94V-2/94V-0
- ◆ COLOR: NATURAL/BLACK
- ◆ UNIT: mm



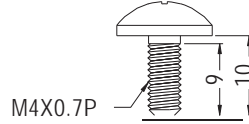
PART NO	PACKAGE
M4-8L	1000



SCREW



- ◆ MATERIAL: NYLON 66 (UL)
- ◆ FLAME CLASS: 94V-2/94V-0
- ◆ COLOR: NATURAL/BLACK
- ◆ UNIT: mm

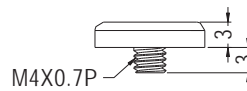


PART NO	PACKAGE
M4-9NBD	1000

SCREW



- ◆ MATERIAL: NYLON 66 (UL)
- ◆ FLAME CLASS: 94V-2/94V-0
- ◆ COLOR: NATURAL/BLACK
- ◆ UNIT: mm

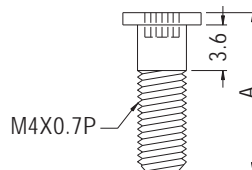


PART NO	PACKAGE
MRL4-3	1000

SCREW



- ◆ MATERIAL: PC(UL)
- ◆ FLAME CLASS: 94V-2
- ◆ COLOR: TRANSPARENT
- ◆ UNIT: mm

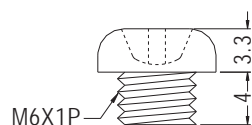
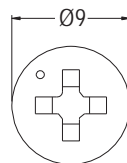


PART NO	A	PACKAGE
MR4-9.5	9.5	1000
MR4-12	12.0	
MR4-20	20.0	

SCREW



- ◆ MATERIAL: PC (UL)
- ◆ FLAME CLASS: 94V-2
- ◆ COLOR: TRANSPARENT
- ◆ UNIT: mm



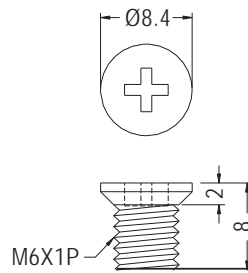
PART NO	PACKAGE
M6-4	1000



SCREW

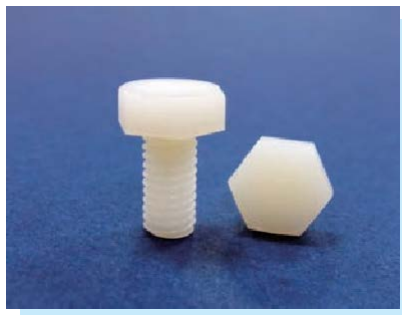


- ◆ MATERIAL:PC (UL)
- ◆ FLAME CLASS:94V-0
- ◆ COLOR:TRANSPARENT
- ◆ UNIT:mm

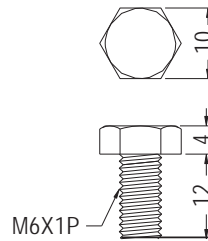


PART NO	PACKAGE
M6-8F	500

SCREW

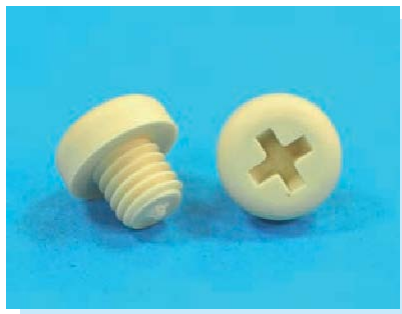


- ◆ MATERIAL:NYLON 66 (UL)
- ◆ FLAME CLASS:94V-2/94V-0
- ◆ COLOR:NATURAL/BLACK
- ◆ UNIT:mm

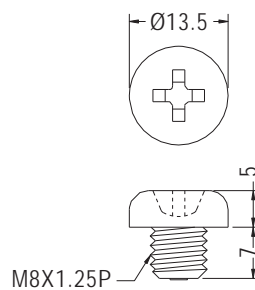


PART NO	PACKAGE
STM6-12	2000

SCREW



- ◆ MATERIAL:NYLON 66 (UL)
- ◆ FLAME CLASS:94V-2/94V-0
- ◆ COLOR:NATURAL/BLACK
- ◆ UNIT:mm

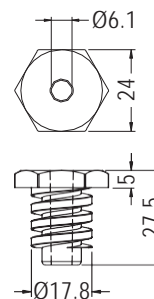


PART NO	PACKAGE
M8-7	1000

SCREW



- ◆ MATERIAL:PE
- ◆ COLOR:BLACK
- ◆ UNIT:mm



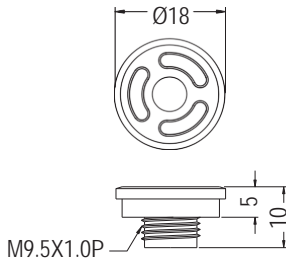
PART NO	PACKAGE
EM-528	500



SCREW



- ◆ MATERIAL:PC (UL)
- ◆ FLAME CLASS:94V-2/94V-0
- ◆ COLOR:BLACK
- ◆ UNIT:mm

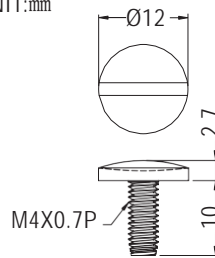


PART NO	PACKAGE
ATFF-1	1000

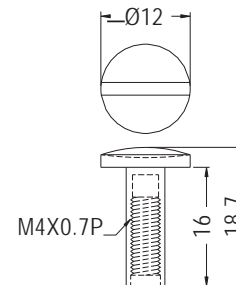
SCREW



- ◆ MATERIAL:PP(UL)
- ◆ FLAME CLASS:HB
- ◆ COLOR:BLACK/WHITE
- ◆ UNIT:mm



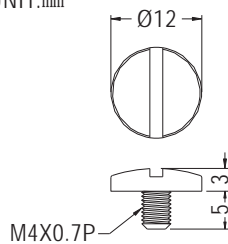
PART NO	PACKAGE
KSM-1A	1000



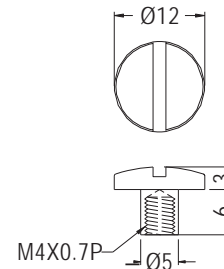
PART NO	PACKAGE
KSM-1B	1000



- ◆ MATERIAL:PE
- ◆ COLOR:BLACK/WHITE
- ◆ UNIT:mm



PART NO	PACKAGE
KSM4-5M	1000

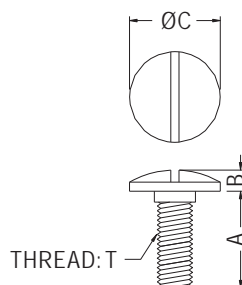


PART NO	PACKAGE
KSM4-6F	1000

SCREW



- ◆ MATERIAL:NYLON 66 (UL)
- ◆ FLAME CLASS:94V-2/94V-0
- ◆ COLOR:NATURAL/BLACK/GRAY
- ◆ UNIT:mm

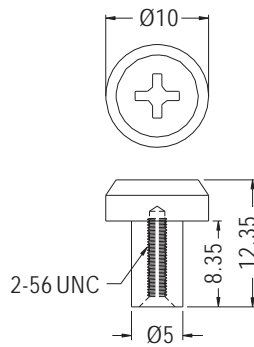


PART NO	A	B	C	T	PACKAGE
MIA6-16	16.0	3.5	15.0	M6X1P	1000
MIA8-20	20.0	5.0	18.5	M8X1.25P	500



SCREW

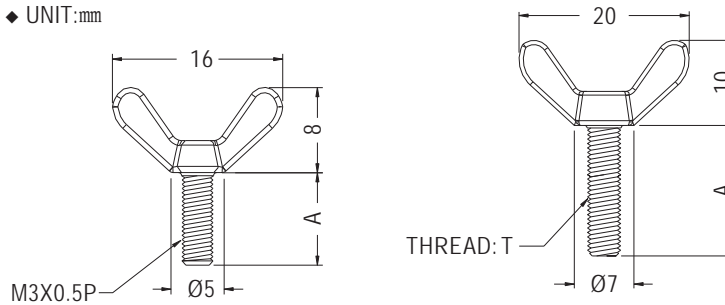
- ◆ MATERIAL: NYLON 66 (UL)
- ◆ FLAME CLASS: 94V-2/94V-0
- ◆ COLOR: NATURAL/BLACK
- ◆ UNIT: mm



PART NO	PACKAGE
KSC256-8.4F	2000

SCREW

- ◆ MATERIAL: NYLON 66 (UL)
- ◆ FLAME CLASS: 94V-2/94V-0
- ◆ COLOR: NATURAL/BLACK
- ◆ UNIT: mm

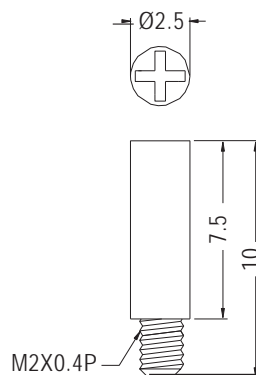


PART NO	A	PACKAGE
SM3-6	6.0	2000
SM3-8	8.0	
SM3-10	10.0	
SM3-12	12.0	

PART NO	A	T	PACKAGE
SM4-6	6.0	M4X0.7P	2000
SM4-8	8.0		
SM4-10	10.0		
SM4-12	12.0		
SM632-6	6.35	6-32 UNC	
SM632-8	8.0		
SM632-9	9.5		
SM632-12	12.7		

SCREW

- ◆ MATERIAL: PC (UL)
- ◆ FLAME CLASS: 94V-2
- ◆ COLOR: TRANSPARENT
- ◆ UNIT: mm

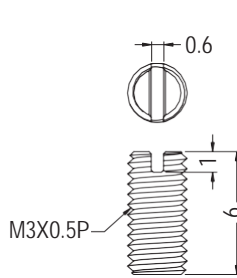


PART NO	PACKAGE
MUS2-10	2000

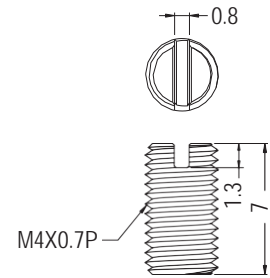


THREADED ROD

- ◆ MATERIAL:PC (UL)
- ◆ FLAME CLASS:94V-0
- ◆ COLOR:BLACK
- ◆ UNIT:mm



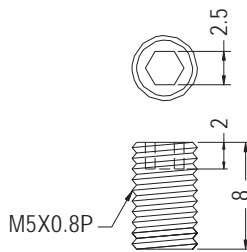
PART NO	PACKAGE
THR13-6	2000



PART NO	PACKAGE
THR14-7	2000

THREADED ROD

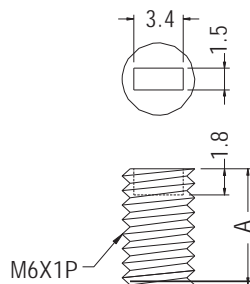
- ◆ MATERIAL:NYLON 66 (UL)
- ◆ FLAME CLASS:94V-2/94V-0
- ◆ COLOR:NATURAL/BLACK
- ◆ UNIT:mm



PART NO	PACKAGE
THR5-8	2000

THREADED ROD

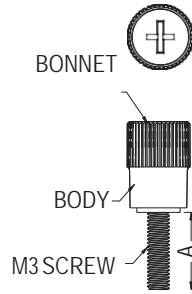
- ◆ MATERIAL:PC (UL)
- ◆ FLAME CLASS:94V-2
- ◆ COLOR:TRANSPARENT
- ◆ UNIT:mm



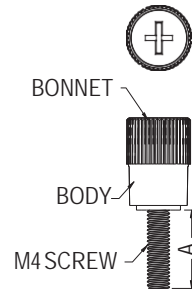
PART NO	A	PACKAGE
THR16-6	6.0	2000
THR16-8	8.0	
THR16-10	10.0	

HAND SPIN SCREW

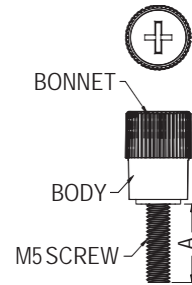
- ◆ MATERIAL: NYLON 66 (UL)
- ◆ FLAME CLASS: 94V-2/94V-0
- ◆ COLOR: BLACK
- ◆ UNIT: mm



PART NO	A	PACKAGE
HASW3-8	5.0	1000
HASW3-9	6.0	
HASW3-13	10.0	
HASW3-18	15.0	
HASW3-23	20.0	
HASW3-28	25.0	
HASW3-33	30.0	



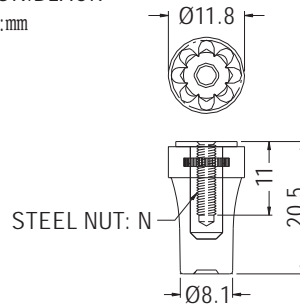
PART NO	A	PACKAGE
HASW4-8	5.0	1000
HASW4-13	10.0	
HASW4-18	15.0	
HASW4-23	20.0	
HASW4-28	25.0	
HASW4-33	30.0	



PART NO	A	PACKAGE
HASW5-10	7.0	1000
HASW5-15	12.0	
HASW5-20	17.0	
HASW5-25	22.0	
HASW5-30	27.0	
HASW5-35	32.0	
HASW5-40	37.0	
HASW5-45	42.0	
HASW5-50	47.0	

HAND SPIN NUT

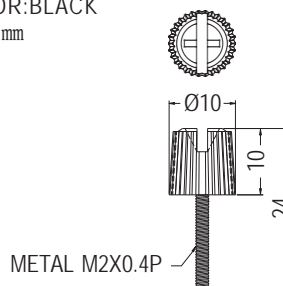
- ◆ MATERIAL: PC+ABS (UL)
- ◆ FLAME CLASS: 94V-2
- ◆ COLOR: BLACK
- ◆ UNIT: mm



PART NO	N	PACKAGE
GPM3-20	M3X0.5P	1000
GPM4-20	M4X0.7P	
GPM632-20	6-32 UNC	

SCREW

- ◆ HEAD MATERIAL: PC+ABS (UL)
- ◆ HEAD FLAME CLASS: 94V-2/94V-0
- ◆ COLOR: BLACK
- ◆ UNIT: mm



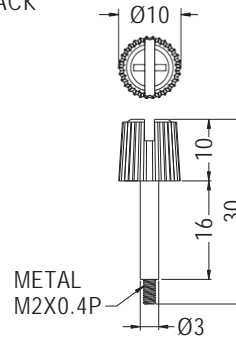
PART NO	PACKAGE
GPE2-24	1000



SCREW



- ◆ HEAD MATERIAL:PC+ABS (UL)
- ◆ HEAD FLAME CLASS:94V-2/94V-0
- ◆ COLOR:BLACK
- ◆ UNIT:mm

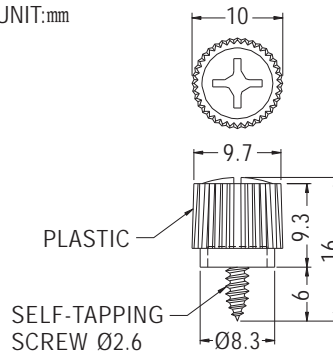


PART NO	PACKAGE
GPE2-30	1000

SCREW



- ◆ PLASTIC MATERIAL:PP
- ◆ SCREW MATERIAL:STEEL
- ◆ COLOR:BLACK
- ◆ UNIT:mm

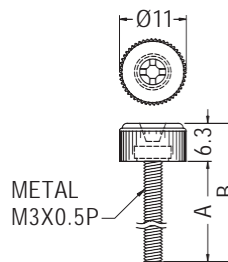


PART NO	PACKAGE
GPE2.6-6	1000

SCREW



- ◆ HEAD MATERIAL:PC+ABS (UL)
- ◆ HEAD FLAME CLASS:94V-2/94V-0
- ◆ COLOR:BLACK
- ◆ UNIT:mm

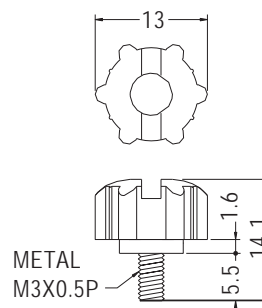


PART NO	A	B	PACKAGE
GPE3-5.5	5.5	11.8	1000
GPE3-8	8.0	14.3	
GPE3-15	15.0	21.3	
GPE3-23	23.0	29.3	

HAND SPIN SCREW



- ◆ MATERIAL:PC+ABS (UL)
- ◆ FLAME CLASS:94V-0
- ◆ COLOR:BLACK
- ◆ UNIT:mm

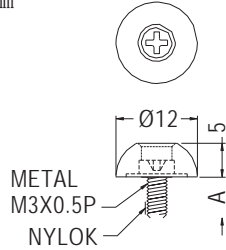


PART NO	PACKAGE
GPR3-5.5	1000

SCREW



- ◆ HEAD MATERIAL:PC+ABS (UL)
- ◆ HEAD FLAME CLASS:94V-0
- ◆ COLOR:BLACK
- ◆ UNIT:mm

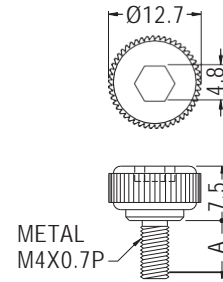
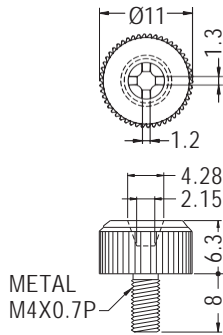


PART NO	A	PACKAGE
GPEA3-6	6.0	1000
GPEA3-8	8.0	

SCREW



- ◆ HEAD MATERIAL:PC+ABS (UL)
- ◆ HEAD FLAME CLASS:94V-0
- ◆ COLOR:NATURAL/BLACK
- ◆ UNIT:mm



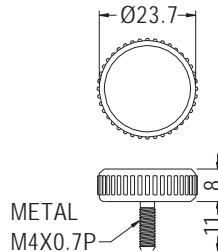
PART NO	PACKAGE
GPE4-8	500

PART NO	A	PACKAGE
GPE4-8L	8.0	500
GPE4-12L	12.0	

HAND SPIN SCREW



- ◆ HEAD MATERIAL:PP(UL)
- ◆ HEAD FLAME CLASS:94HB
- ◆ COLOR:BLACK
- ◆ UNIT:mm

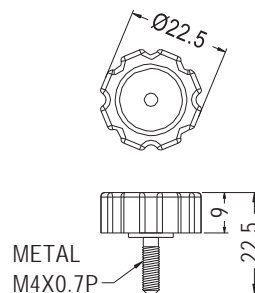


PART NO	PACKAGE
GPE4-12-1	200

SCREW



- ◆ HEAD MATERIAL:ABS (UL)
- ◆ HEAD FLAME CLASS:94V-0
- ◆ COLOR:BLACK/DARK GRAY
- ◆ UNIT:mm



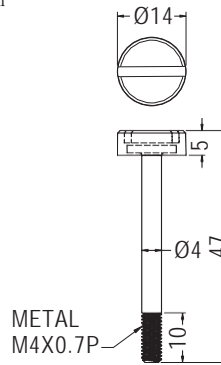
PART NO	PACKAGE
GPE4-13.5	250



SCREW



- ◆ HEAD MATERIAL:ABS(UL)
- ◆ HEAD FLAME CLASS:94HB
- ◆ COLOR:BLACK/WHITE/PINK/BLUE
- ◆ UNIT:mm

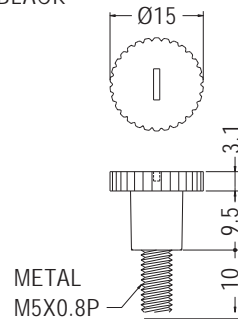


PART NO	PACKAGE
GPE4-42	250

SCREW



- ◆ HEAD MATERIAL:ABS(UL)
- ◆ HEAD FLAME CLASS:94HB
- ◆ COLOR:BLACK
- ◆ UNIT:mm

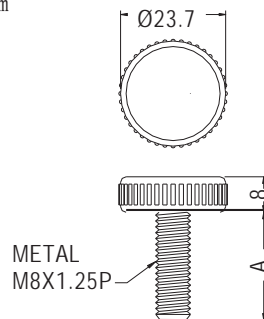


PART NO	PACKAGE
GPE5-20	500

HAND SPIN SCREW



- ◆ HEAD MATERIAL:PP
- ◆ COLOR:BLACK
- ◆ UNIT:mm

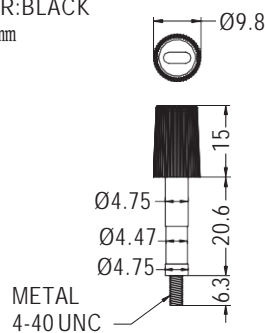


PART NO	A	PACKAGE
★ GPE8-21	13.0	100
GPE8-32	24.7	

SCREW



- ◆ HEAD MATERIAL:PC(UL)
- ◆ HEAD FLAME CLASS:94V-2
- ◆ COLOR:BLACK
- ◆ UNIT:mm

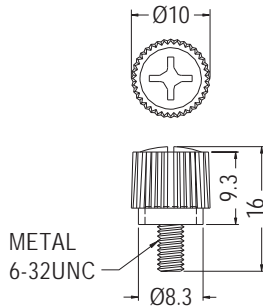


PART NO	PACKAGE
GPE44-1	500



SCREW

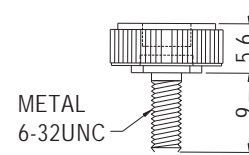
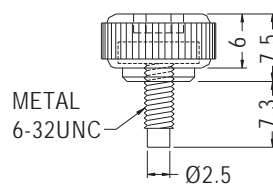
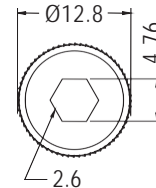
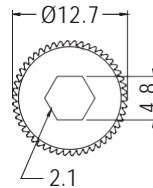
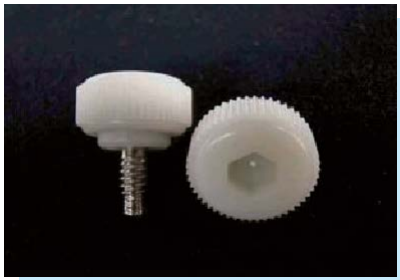
- ◆ HEAD MATERIAL:PP
- ◆ COLOR:BLACK/COMPUTER
- ◆ UNIT:mm



PART NO	PACKAGE
GPE632-6	500

SCREW

- ◆ HEAD MATERIAL:ABS (UL)
- ◆ HEAD FLAME CLASS:94HB
- ◆ COLOR:NATURAL
- ◆ UNIT:mm

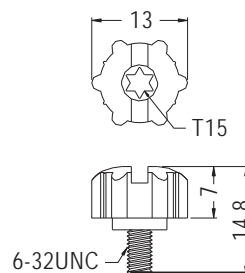


PART NO	PACKAGE
GPE632-5	500

PART NO	PACKAGE
GPE632-9	500

SCREW

- ◆ HEAD MATERIAL:ABS(UL)
- ◆ HEAD FLAME CLASS:94HB
- ◆ COLOR:BLUE
- ◆ UNIT:mm

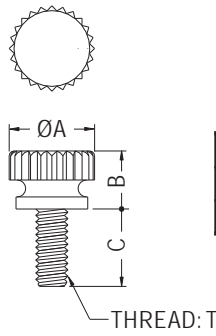


PART NO	PACKAGE
GPR632-6	500



SCREW

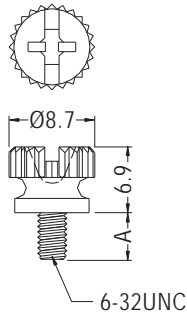
- ◆ MATERIAL: NYLON 66 (UL)
- ◆ FLAME CLASS: 94V-2/94V-0
- ◆ COLOR: NATURAL/BLACK
- ◆ UNIT: mm



PARTNO	A	B	C	T	PACKAGE
SUS632	9.0	6.9	9.8	6-32 UNC	1000
SUS832	10.6	7.2	9.6	8-32 UNC	

SCREW

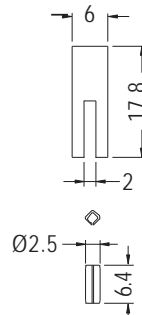
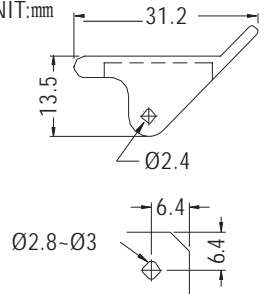
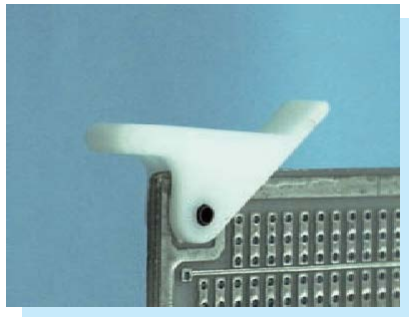
- ◆ MATERIAL: NYLON 66 (UL)
- ◆ FLAME CLASS: 94V-2/94V-0
- ◆ COLOR: NATURAL/BLACK
- ◆ UNIT: mm



PARTNO	A	PACKAGE
RSUS632	5.0	1000
RSUS632-6	6.0	

CARD PULLER

- ◆ MATERIAL: POM (UL)
- ◆ FLAME CLASS: 94HB
- ◆ PIN MATERIAL: STEEL
- ◆ COLOR: WHITE
- ◆ UNIT: mm



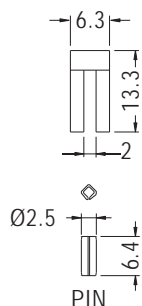
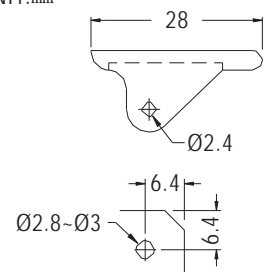
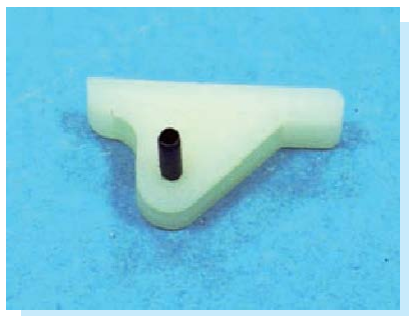
MOUNTING HOLE

PIN

PARTNO	PACKAGE
CP-15	1000

CARD PULLER

- ◆ MATERIAL: NYLON 66 (UL)
- ◆ FLAME CLASS: 94V-2/94V-0
- ◆ PIN MATERIAL: STEEL
- ◆ COLOR: NATURAL/BLACK
- ◆ UNIT: mm



MOUNTING HOLE

PIN

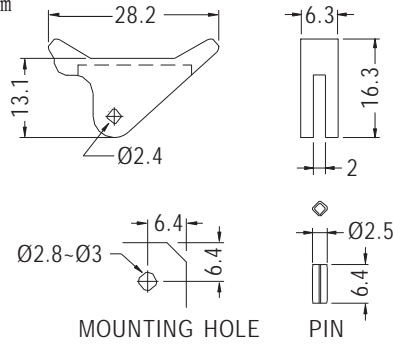
PARTNO	PACKAGE
CP-20	1000



CARD PULLER



- ◆ MATERIAL: NYLON 66 (UL)/POM (UL)
- ◆ FLAME CLASS: 94HB/94V-2/94V-0
- ◆ PIN MATERIAL: STEEL
- ◆ COLOR: NATURAL/BLACK
- ◆ UNIT: mm

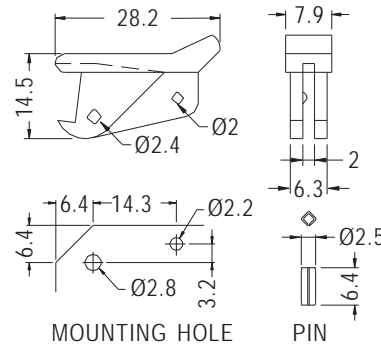


PART NO	PACKAGE
CP-25	1000

CARD PULLER



- ◆ MATERIAL: NYLON 66 (UL)
- ◆ FLAME CLASS: 94V-2/94V-0
- ◆ PIN MATERIAL: STEEL
- ◆ COLOR: NATURAL/BLACK
- ◆ UNIT: mm

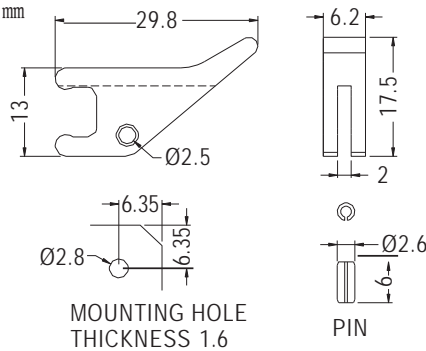


PART NO	PACKAGE
CP-30	1000

CARD PULLER



- ◆ MATERIAL: NYLON 66 (UL)
- ◆ FLAME CLASS: 94V-2/94V-0
- ◆ PIN MATERIAL: STEEL
- ◆ COLOR: NATURAL/BLACK
- ◆ UNIT: mm

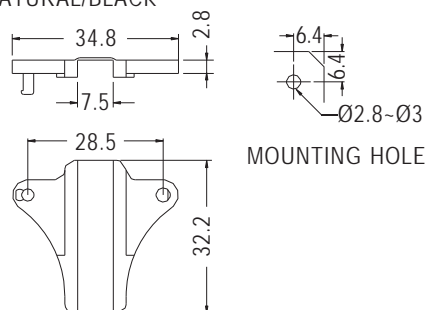


PART NO	PACKAGE
CP-90	1000

CARD PULLER



- ◆ MATERIAL: NYLON 66 (UL)
- ◆ FLAME CLASS: 94V-2/94V-0
- ◆ COLOR: NATURAL/BLACK
- ◆ UNIT: mm



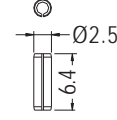
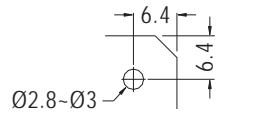
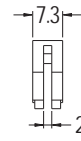
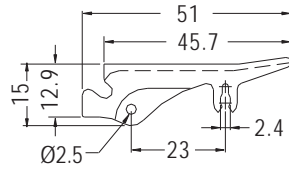
PART NO	PACKAGE
CP-35	500



CARD PULLER



- ◆ MATERIAL: NYLON 66 (UL)
- ◆ FLAME CLASS: 94V-2/94V-0
- ◆ PIN MATERIAL: STEEL
- ◆ COLOR: NATURAL/BLACK
- ◆ UNIT: mm



MOUNTING HOLE

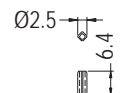
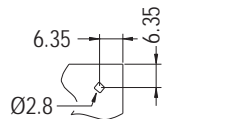
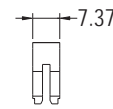
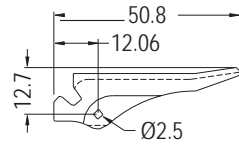
PIN

PART NO	PACKAGE
CP-37	250

CARD PULLER



- ◆ MATERIAL: NYLON 66 (UL)
- ◆ FLAME CLASS: 94V-2/94V-0
- ◆ PIN MATERIAL: STEEL
- ◆ COLOR: NATURAL/BLACK
- ◆ UNIT: mm



MOUNTING HOLE
THICKNESS 1.6

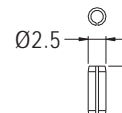
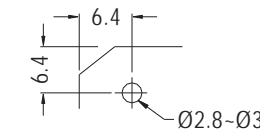
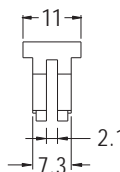
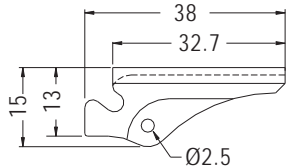
PIN

PART NO	PACKAGE
CP-38	1000

CARD PULLER



- ◆ MATERIAL: NYLON 66 (UL)
- ◆ FLAME CLASS: 94V-2/94V-0
- ◆ PIN MATERIAL: STEEL
- ◆ COLOR: NATURAL/BLACK
- ◆ UNIT: mm



MOUNTING HOLE

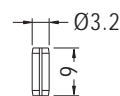
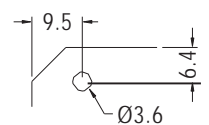
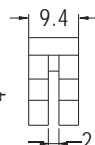
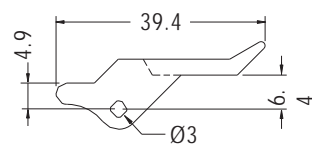
PIN

PART NO	PACKAGE
CP-47	500

CARD PULLER



- ◆ MATERIAL: NYLON 66 (UL)
- ◆ FLAME CLASS: 94V-2/94V-0
- ◆ PIN MATERIAL: STEEL
- ◆ COLOR: NATURAL/BLACK
- ◆ UNIT: mm



MOUNTING HOLE

PIN

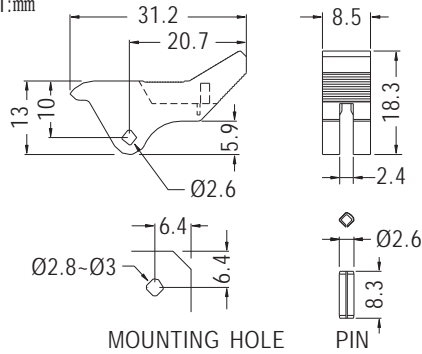
PART NO	PACKAGE
CP-50	500



CARD PULLER



- ◆ MATERIAL: NYLON 66 (UL)
- ◆ FLAME CLASS: 94V-2/94V-0
- ◆ PIN MATERIAL: STEEL
- ◆ COLOR: NATURAL/BLACK
- ◆ UNIT: mm

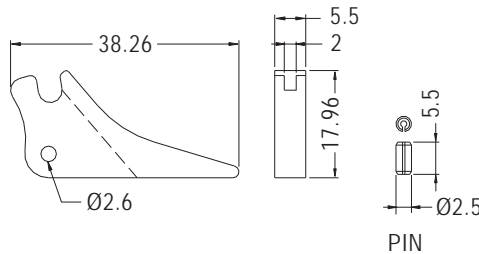


PART NO	PACKAGE
CP-70	1000

CARD PULLER



- ◆ MATERIAL: POM (UL)
- ◆ FLAME CLASS: 94HB
- ◆ PIN MATERIAL: STEEL
- ◆ COLOR: BLACK
- ◆ UNIT: mm

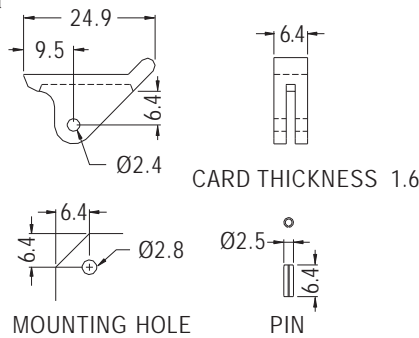


PART NO	PACKAGE
CP-72	500

CARD PULLER



- ◆ MATERIAL: NYLON 66 (UL)
- ◆ FLAME CLASS: 94V-2/94V-0
- ◆ PIN MATERIAL: STEEL
- ◆ COLOR: NATURAL/BLACK
- ◆ UNIT: mm

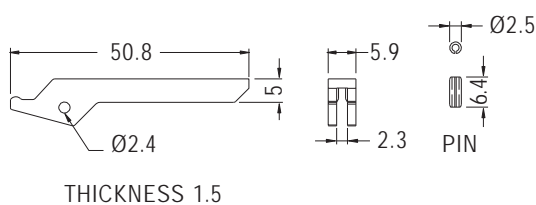


PART NO	PACKAGE
CP-82	1000

CARD PULLER

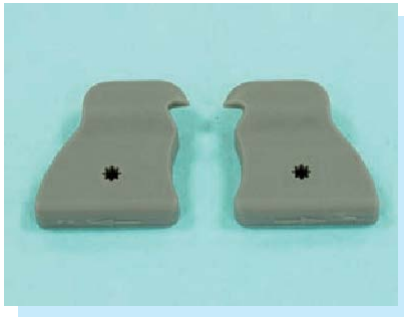


- ◆ MATERIAL: NYLON 66 (UL)
- ◆ FLAME CLASS: 94V-2/94V-0
- ◆ PIN MATERIAL: STEEL
- ◆ COLOR: NATURAL/BLACK
- ◆ UNIT: mm

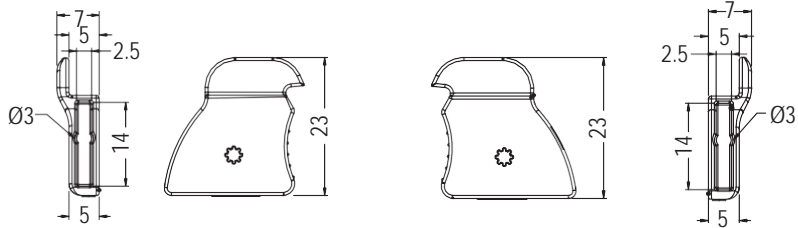


PART NO	PACKAGE
CP-84	1000

CARD PULLER



- ◆ MATERIAL:PC+ABS (UL)
- ◆ FLAME CLASS:94V-0
- ◆ COLOR:GRAY/ORANGE
- ◆ UNIT:mm

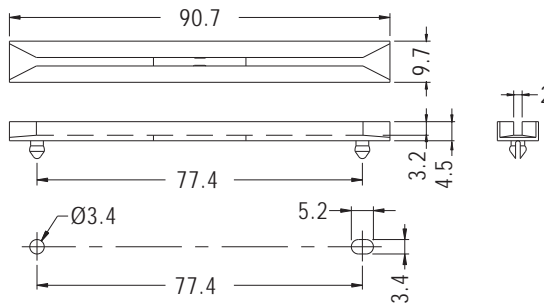
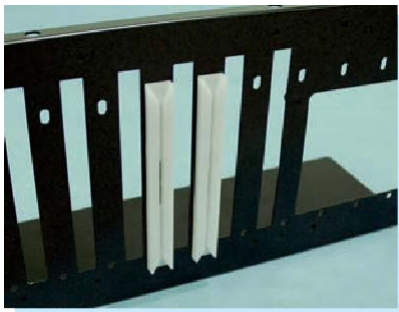


PART NO	PACKAGE
CP-76	1000

PART NO	PACKAGE
CP-77	1000

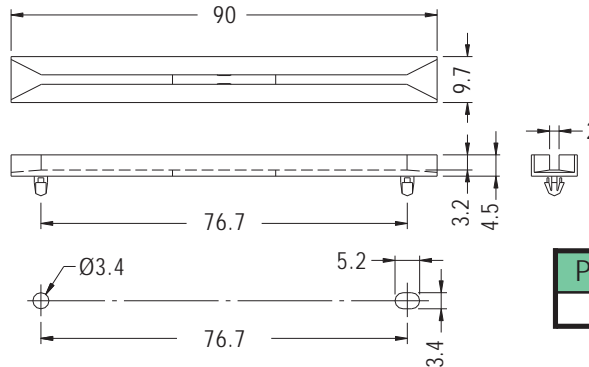
CARD GUIDE

- ◆ MATERIAL:NYLON 66(UL)
- ◆ FLAME CLASS:94V-2/94V-0
- ◆ COLOR:NATURAL/BLACK
- ◆ UNIT:mm



PART NO	PACKAGE
CG-9A	250

MOUNTING HOLES

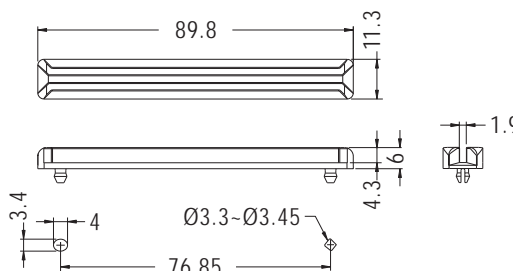


PART NO	PACKAGE
CG-9B	250

MOUNTING HOLES
CHASSIS THICKNESS 1.2

CARD GUIDE

- ◆ MATERIAL:NYLON 66(UL)
- ◆ FLAME CLASS:94V-2/94V-0
- ◆ COLOR:NATURAL/BLACK
- ◆ UNIT:mm



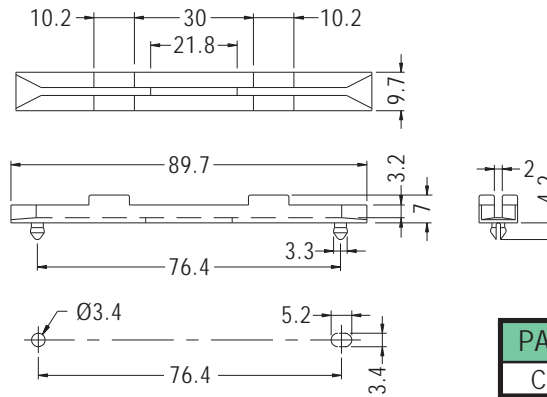
PART NO	PACKAGE
CG-9D	500

MOUNTING HOLES
CHASSIS THICKNESS 1.2-2.3



CARD GUIDE

- ◆ MATERIAL: NYLON 66 (UL)
- ◆ FLAME CLASS: 94V-2/94V-0
- ◆ COLOR: NATURAL/BLACK
- ◆ UNIT: mm

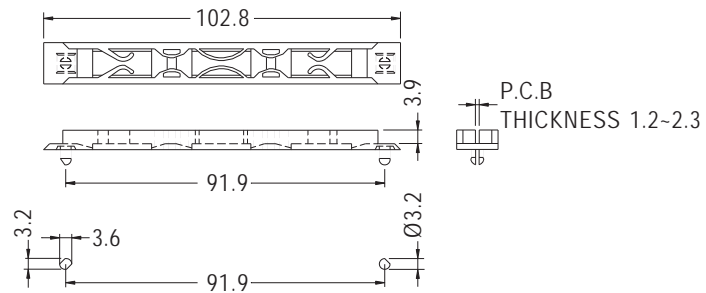


MOUNTING HOLES

PART NO	PACKAGE
CG-9AL	250

CARD GUIDE

- ◆ MATERIAL: NYLON 66 (UL)
- ◆ FLAME CLASS: 94V-2/94V-0
- ◆ COLOR: NATURAL/BLACK
- ◆ UNIT: mm

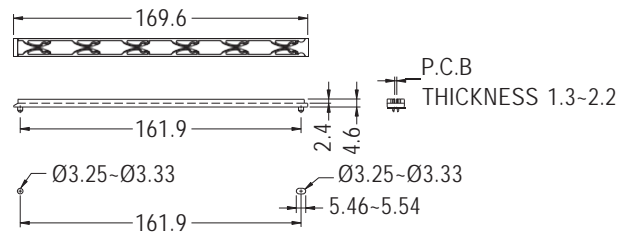


MOUNTING HOLES
CHASSIS THICKNESS 1.6~2.2

PART NO	PACKAGE
CG-10A	250

CARD GUIDE

- ◆ MATERIAL: PC (UL)
- ◆ FLAME CLASS: 94V-0
- ◆ COLOR: BLACK
- ◆ UNIT: mm



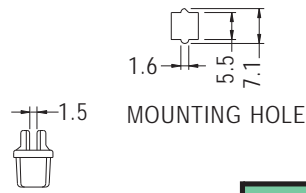
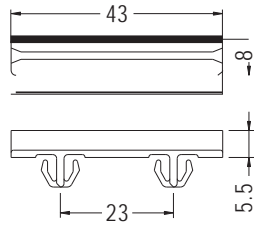
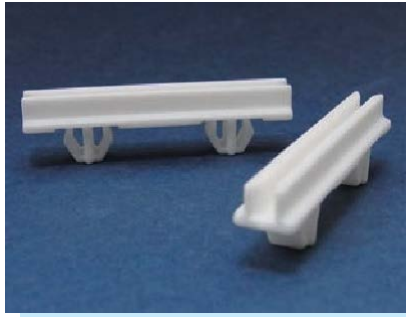
MOUNTING HOLES
THICKNESS 1.5-1.8

PART NO	PACKAGE
CGE-169	500



CARD GUIDE

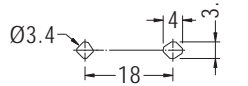
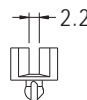
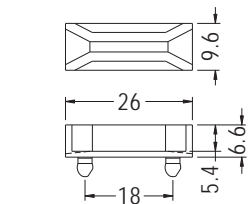
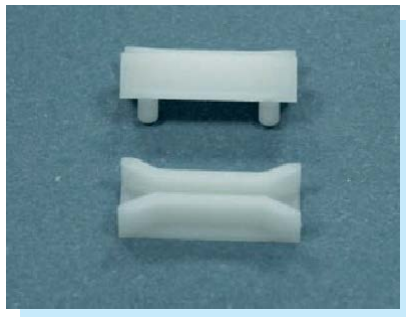
- ◆ MATERIAL: NYLON 66 (UL)
- ◆ FLAME CLASS: 94V-2/94V-0
- ◆ COLOR: NATURAL/BLACK
- ◆ UNIT: mm



PARTNO	PACKAGE
CG-43	500

CARD GUIDE

- ◆ MATERIAL: NYLON 66 (UL)
- ◆ FLAME CLASS: 94V-2/94V-0
- ◆ COLOR: NATURAL/BLACK
- ◆ UNIT: mm

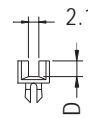
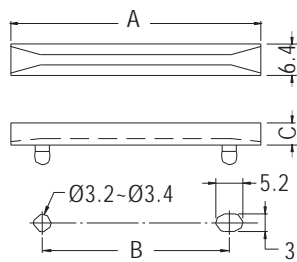


MOUNTING HOLES

PARTNO	PACKAGE
CG-26	500

CARD GUIDE

- ◆ MATERIAL: NYLON 66 (UL)
- ◆ FLAME CLASS: 94V-2/94V-0
- ◆ COLOR: NATURAL/BLACK
- ◆ UNIT: mm



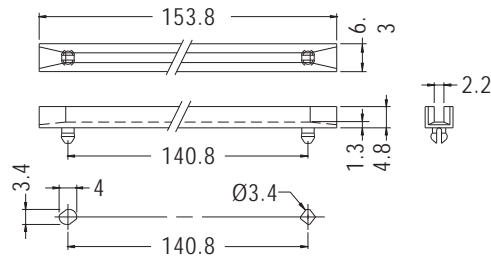
MOUNTING HOLES
 CHASSIS THICKNESS 0.8~1.2

PARTNO	A	B	C	D	E	PACKAGE
CG-38	38.0	25.4	4.5	3.2	0.8~1.2	500
CG-38L	38.0	25.4	4.6	3.0	1.0~1.6	
CG-50	50.8	38.0	4.5	3.2	0.8~1.2	
CG-50S	50.8	38.0	2.5	1.2	0.8~1.2	

CARD GUIDE



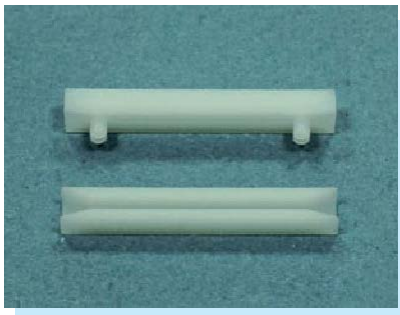
- ◆ MATERIAL: NYLON 66 (UL)
- ◆ FLAME CLASS: 94V-2/94V-0
- ◆ COLOR: NATURAL/BLACK
- ◆ UNIT: mm



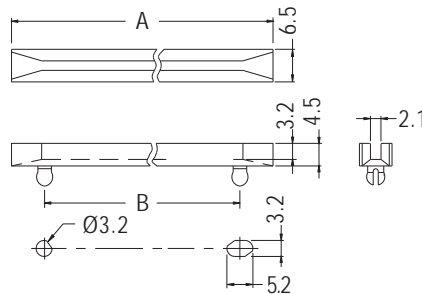
MOUNTING HOLES
CHASSIS THICKNESS 1.2

PART NO	PACKAGE
CG-153	100

CARD GUIDE



- ◆ MATERIAL: NYLON 66 (UL)
- ◆ FLAME CLASS: 94V-2/94V-0
- ◆ COLOR: NATURAL/BLACK
- ◆ UNIT: mm



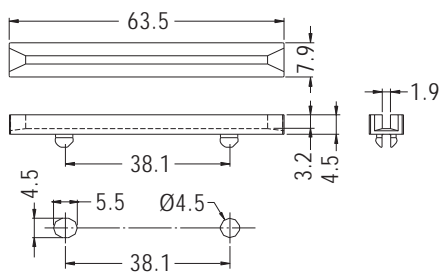
MOUNTING HOLES
CHASSIS THICKNESS 0.8-1.2

PART NO	A	B	PACKAGE
CG-250	63.5	50.8	500
CG-300	76.2	63.5	
CG-350	88.9	76.2	250
CG-400	101.6	88.9	
CG-450	114.3	101.6	200
CG-500	127.0	114.3	
CG-550	139.7	127.0	
CG-600	152.4	139.7	

CARD GUIDE



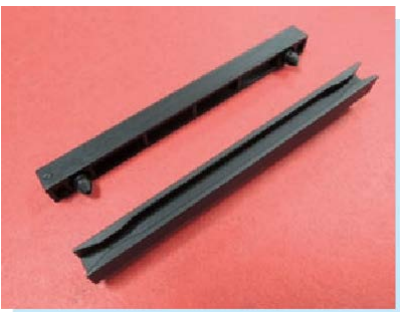
- ◆ MATERIAL: NYLON 66 (UL)
- ◆ FLAME CLASS: 94V-2/94V-0
- ◆ COLOR: NATURAL/BLACK
- ◆ UNIT: mm



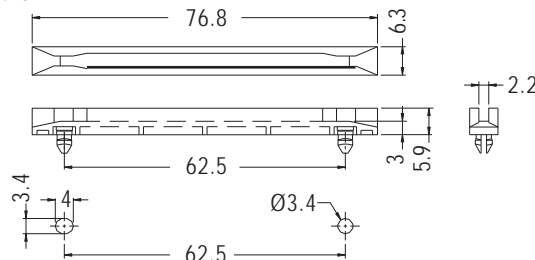
MOUNTING HOLES
CHASSIS THICKNESS 0.8

PART NO	PACKAGE
CG-63	500

CARD GUIDE



- ◆ MATERIAL: NYLON 66 (UL)
- ◆ FLAME CLASS: 94V-2/94V-0
- ◆ COLOR: NATURAL/BLACK
- ◆ UNIT: mm

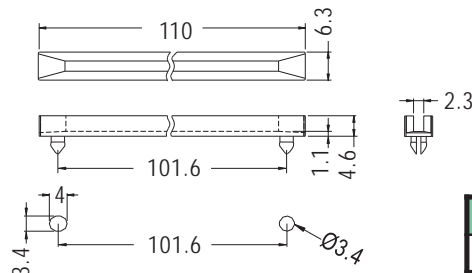
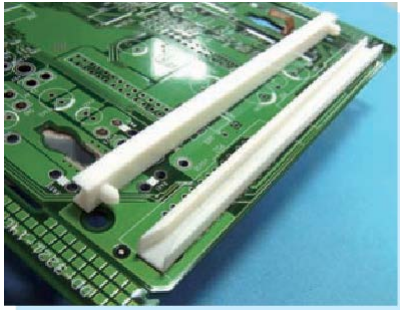


MOUNTING HOLES
MAX. THICKNESS 1.0

PART NO	PACKAGE
CG-77	500

CARD GUIDE

- ◆ MATERIAL: NYLON 66 (UL)
- ◆ FLAME CLASS: 94V-2/94V-0
- ◆ COLOR: NATURAL/BLACK
- ◆ UNIT: mm

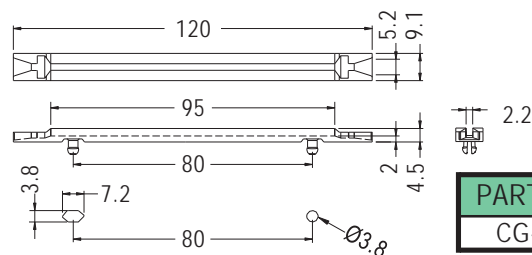


MOUNTING HOLES
THICKNESS 0.8-1.2

PART NO	PACKAGE
CG-110	100

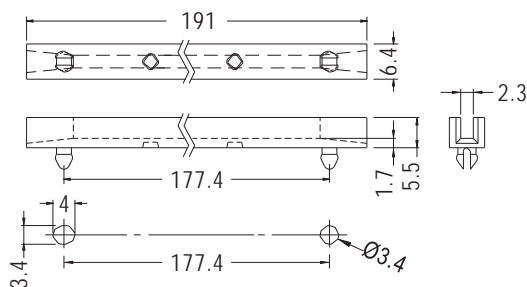
CARD GUIDE

- ◆ MATERIAL: NYLON 66 (UL)
- ◆ FLAME CLASS: 94V-2/94V-0
- ◆ COLOR: NATURAL/BLACK
- ◆ UNIT: mm



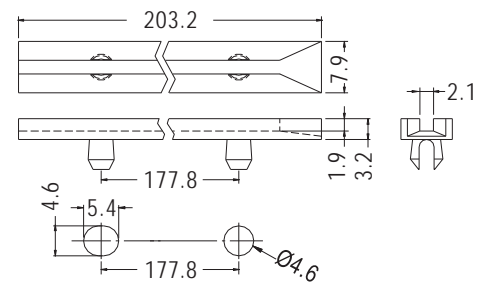
MOUNTING HOLES
CHASSIS THICKNESS 1.6

PART NO	PACKAGE
CG-120	100



MOUNTING HOLES
CHASSIS THICKNESS 1.2

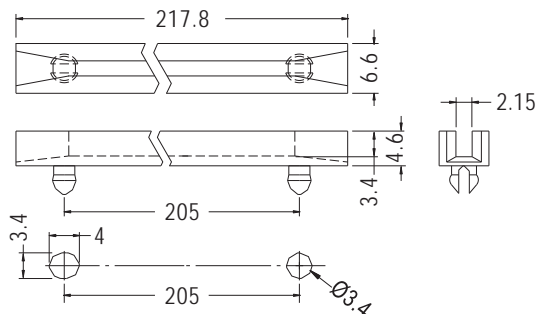
PART NO	PACKAGE
CG-191	100



MOUNTING HOLES
CHASSIS THICKNESS 1.2

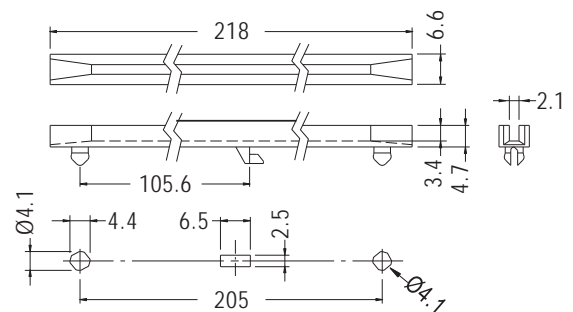
PART NO	PACKAGE
CG-203	100

- ◆ MATERIAL: PC (UL)
- ◆ COLOR: BLACK



MOUNTING HOLES
CHASSIS THICKNESS 1.2

PART NO	PACKAGE
CG-218	100



MOUNTING HOLES
CHASSIS THICKNESS 1.2

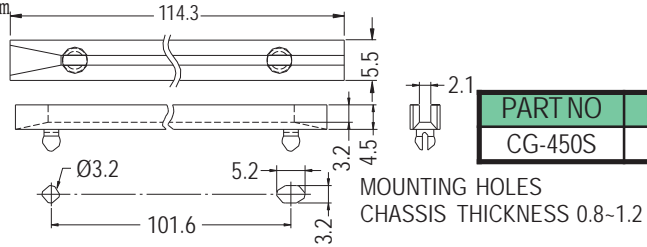
PART NO	PACKAGE
CGF-218	100



CARD GUIDE



- ◆ MATERIAL: NYLON 66 (UL)
- ◆ FLAME CLASS: 94V-2/94V-0
- ◆ COLOR: NATURAL/BLACK
- ◆ UNIT: mm

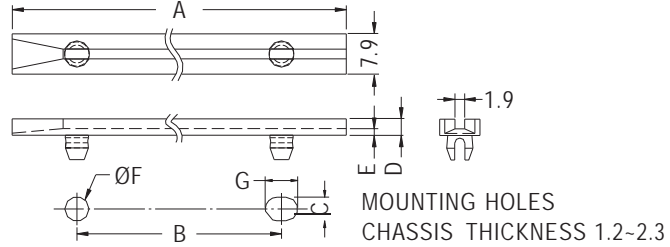


PART NO	PACKAGE
CG-450S	500

CARD GUIDE



- ◆ MATERIAL: NYLON 66 (UL)
- ◆ FLAME CLASS: 94V-2/94V-0
- ◆ COLOR: NATURAL/BLACK
- ◆ UNIT: mm

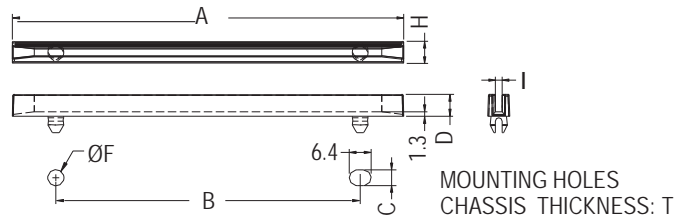


PART NO	A	B	C	D	E	F	G	PACKAGE
CG-650	164.1	139.7	4.47	4.4	1.2	4.57	5.71	500
CG-700	177.8	152.4	4.62	3.2	1.3	4.75	6.35	100
CG-700A	177.8	152.4	4.4	3.2	1.3	4.5	5.6	
CG-750	190.5	165.1	4.47	3.2	1.3	4.57	5.71	

CARD GUIDE



- ◆ MATERIAL: NYLON 66 (UL)
- ◆ FLAME CLASS: 94V-2/94V-0
- ◆ COLOR: NATURAL/BLACK/WHITE
- ◆ UNIT: mm

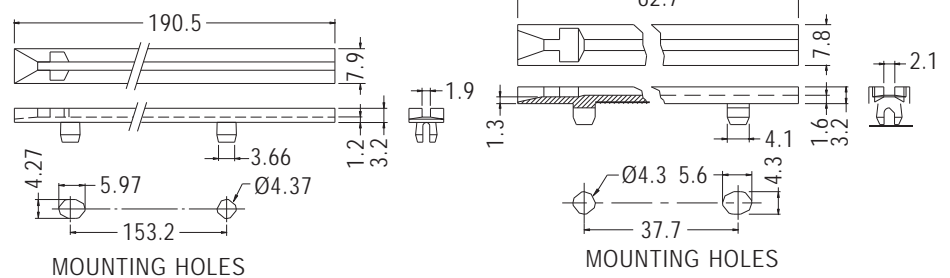


PART NO	A	B	C	D	F	H	I	T	PACKAGE
BCG-250	63.5	38.1	4.8	6.35	4.8	6.35	2.2	1.2-2.3	500
BCG-450	114.3	88.9	4.6	6.4	4.75	6.4	2.0	1.2-2.3	

CARD GUIDE



- ◆ MATERIAL: NYLON 66 (UL)
- ◆ FLAME CLASS: 94V-2/94V-0
- ◆ COLOR: NATURAL/BLACK/RED
- ◆ UNIT: mm



PART NO	PACKAGE
FR-190	500

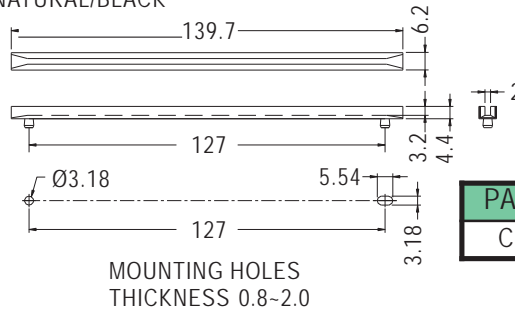
PART NO	PACKAGE
FR-250	500



CARD GUIDE



- ◆ MATERIAL: NYLON 66 (UL)
- ◆ FLAME CLASS: 94V-2/94V-0
- ◆ COLOR: NATURAL/BLACK
- ◆ UNIT: mm

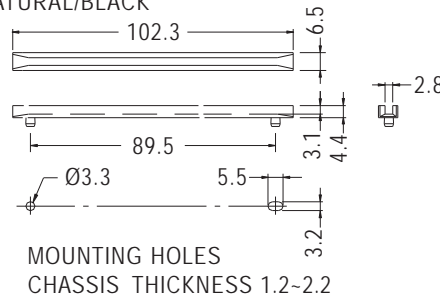


PART NO	PACKAGE
CG-140	250

CARD GUIDE



- ◆ MATERIAL: NYLON 66 (UL)
- ◆ FLAME CLASS: 94V-2/94V-0
- ◆ COLOR: NATURAL/BLACK
- ◆ UNIT: mm

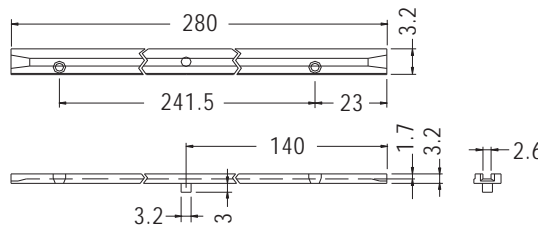


PART NO	PACKAGE
CGA-102	250

CARD GUIDE



- ◆ MATERIAL: NYLON 66 (UL)
- ◆ FLAME CLASS: 94V-2/94V-0
- ◆ COLOR: NATURAL/BLACK
- ◆ UNIT: mm

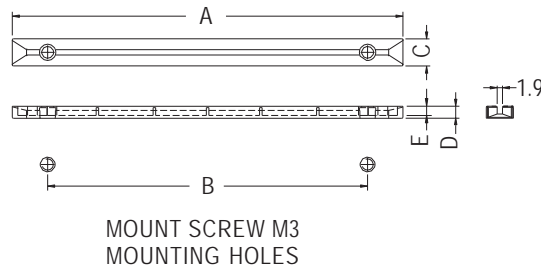


PART NO	PACKAGE
CGS-280	100

CARD GUIDE



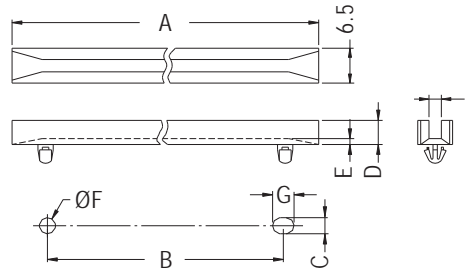
- ◆ MATERIAL: NYLON 66 (UL)
- ◆ FLAME CLASS: 94V-2/94V-0
- ◆ COLOR: NATURAL/BLACK
- ◆ UNIT: mm



PART NO	A	B	C	D	E	PACKAGE
★ CGB-100L	100.0	77.0	10.0	7.2	5.4	250
CGB-120	119.0	94.5	9.8	4.5	3.0	
CGB-140	139.8	114.5	9.7	4.3	2.8	
CGB-160	158.7	135.0	9.7	4.3	2.8	

CARD GUIDE

- ◆ MATERIAL: NYLON 66 (UL)
- ◆ FLAME CLASS: 94V-2/94V-0
- ◆ COLOR: NATURAL/BLACK
- ◆ UNIT: mm



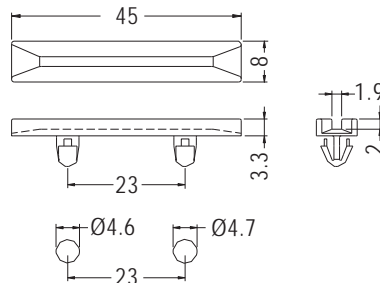
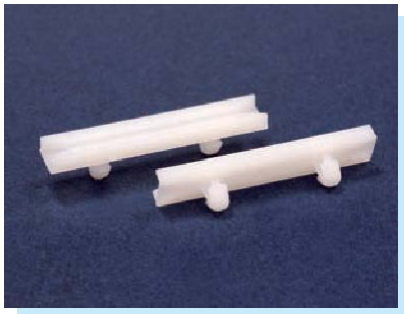
MOUNTING HOLES
THICKNESS: T

PART NO	A	B	C	D	E	F	G	I	T	PACKAGE
CGDLA-102	103.0	89.5	3.3	4.4	1.3	3.4	5.5	2.8	1.0	500
★CGDLA-102L									1.5	
CGDLA-350	89.2	76.7	3.0	4.5	1.1	3.0	4.0	2.3	0.8	250

CARD GUIDE



- ◆ MATERIAL: NYLON 66 (UL)
- ◆ FLAME CLASS: 94V-2/94V-0
- ◆ COLOR: NATURAL/BLACK
- ◆ UNIT: mm



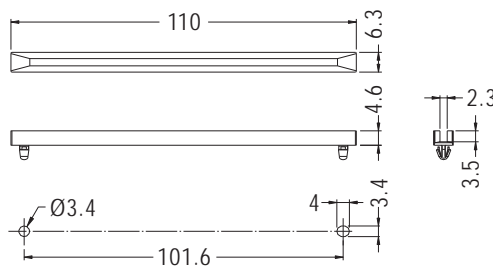
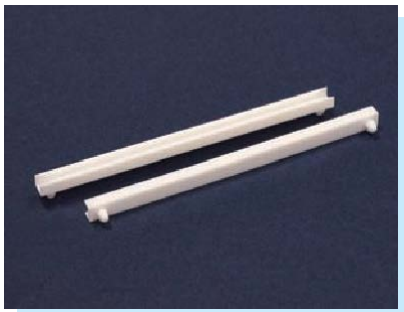
MOUNTING HOLES
THICKNESS 1.6~1.8

PART NO	PACKAGE
CG-45	1000

CARD GUIDE



- ◆ MATERIAL: NYLON 66 (UL)
- ◆ FLAME CLASS: 94V-2/94V-0
- ◆ COLOR: NATURAL/BLACK
- ◆ UNIT: mm



MOUNTING HOLES
THICKNESS 1.2

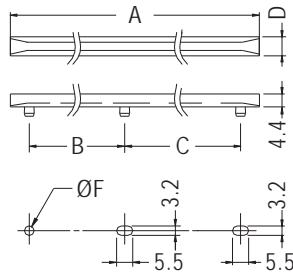
PART NO	PACKAGE
CGLJ-110	500



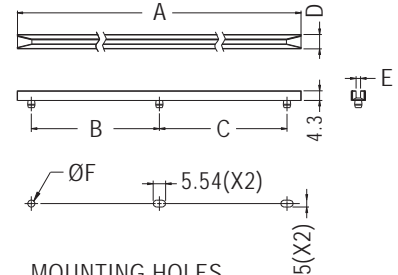
CARD GUIDE



- ◆ MATERIAL: NYLON 66 (UL)
- ◆ FLAME CLASS: 94V-2/94V-0
- ◆ COLOR: NATURAL/BLACK
- ◆ UNIT: mm



MOUNTING HOLES
CHASSIS THICKNESS: G



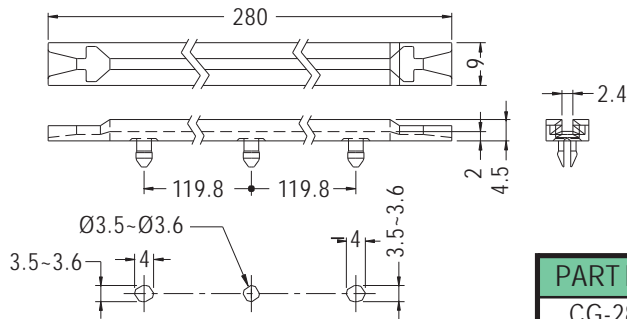
MOUNTING HOLES
CHASSIS THICKNESS: G
FOR CGA-178S

PART NO	A	B	C	D	E	F	G	PACKAGE
CGA-178	178.5	83.0	83.0	6.5	2.8	3.3	1.2~2.2	200
★ CGA-178S	177.8	82.55	82.55	6.4	2.0	3.18	1.2~2.2	
CGA-203	203.2	95.2	95.2	6.2	2.0	3.2	1.2~2.0	100
CGA-217	217.0	102.0	102.0	6.5	2.8	3.3	1.2~2.2	200



CARD GUIDE

- ◆ MATERIAL: NYLON 66 (UL)
- ◆ FLAME CLASS: 94V-2/94V-0
- ◆ COLOR: NATURAL/BLACK
- ◆ UNIT: mm

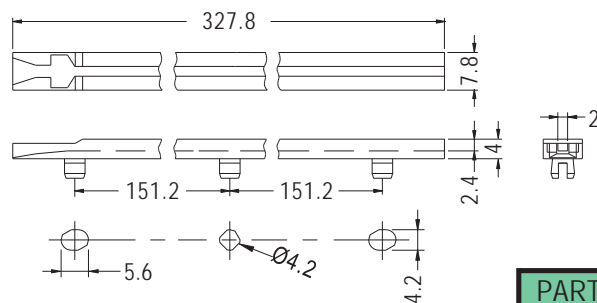


HOLE IN CHASSIS
MAX. THICKNESS 2.0

PART NO	PACKAGE
CG-280	100

CARD GUIDE

- ◆ MATERIAL: NYLON 66 (UL)
- ◆ FLAME CLASS: 94V-2/94V-0
- ◆ COLOR: RED
- ◆ UNIT: mm

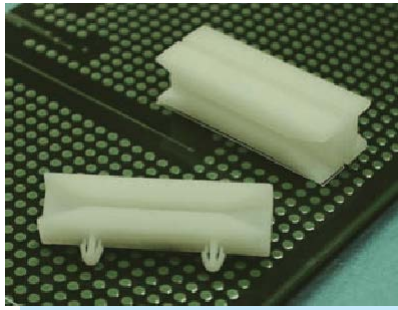


MOUNTING HOLES

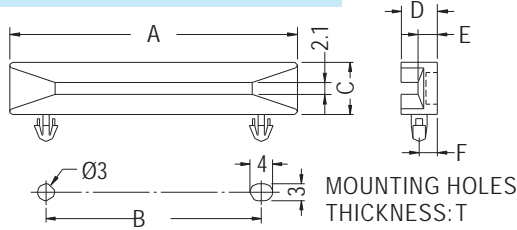
PART NO	PACKAGE
FR-1300	100



CARD GUIDE



- ◆ MATERIAL: NYLON 66 (UL)
- ◆ FLAME CLASS: 94V-2/94V-0
- ◆ COLOR: NATURAL/BLACK
- ◆ UNIT: mm

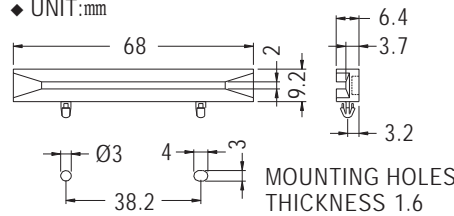


PART NO	A	B	C	D	E	F	T	PACKAGE
CGLA-4							1.6-1.7	500
CGLA-4(1)	38.4	20.0	9.2	6.4	3.4	3.2	1.0	
CGLA-4(2)							2.0	
CGLA-4S	40.0	20.0	8.0	6.0	3.0	3.0	1.6	250
CGLA-6	51.0	38.2	9.2	6.4	3.4	3.2	1.6-1.7	
CGLA-8							1.6-1.8	
CGLA-8(2)	81.0	60.0					1.8-2.1	
CGLA-8(8)			8.0	6.0	3.0	3.0	1.8	
CGLA-8(25)							2.5	
CGLA-9(1)	91.5	71.0					1.6-1.8	250
CGLA-9(2)							1.8-2.1	

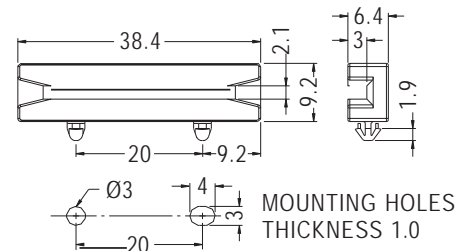
CARD GUIDE



- ◆ MATERIAL: NYLON 66 (UL)
- ◆ FLAME CLASS: 94V-2/94V-0
- ◆ COLOR: NATURAL/BLACK
- ◆ UNIT: mm

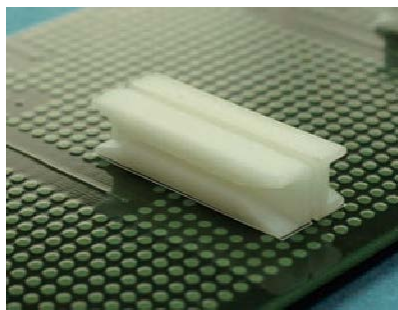


PART NO	PACKAGE
CGLA-10	200

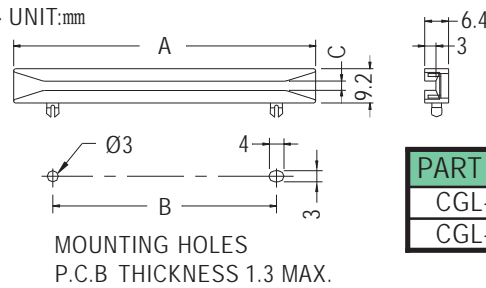


PART NO	PACKAGE
CGLA-11	500

CARD GUIDE

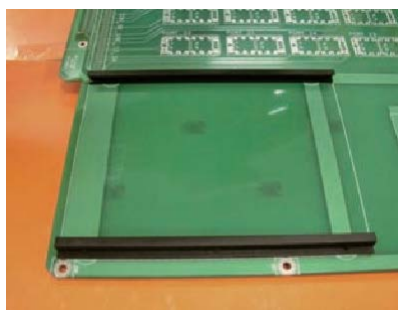


- ◆ MATERIAL: NYLON 66 (UL)
- ◆ FLAME CLASS: 94V-2/94V-0
- ◆ COLOR: NATURAL/BLACK
- ◆ UNIT: mm

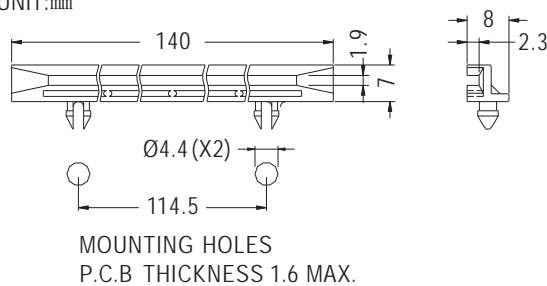


PART NO	A	B	C	PACKAGE
CGL-4	38.4	20.0	2.0	500
CGL-8	81.0	60.0	2.5	250

CARD GUIDE



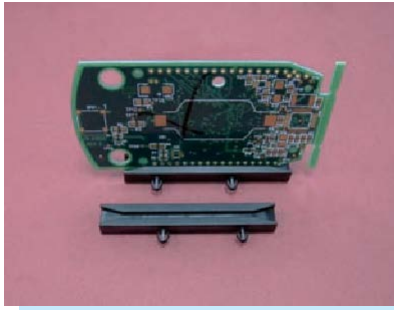
- ◆ MATERIAL: NYLON 66 (UL)
- ◆ FLAME CLASS: 94V-2/94V-0
- ◆ COLOR: NATURAL/BLACK
- ◆ UNIT: mm



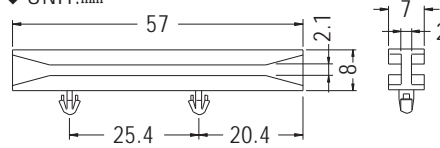
PART NO	PACKAGE
CGA-140	100



CARD GUIDE

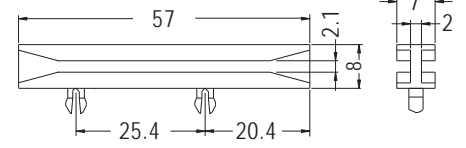


- ◆ MATERIAL: NYLON 66 (UL)
- ◆ FLAME CLASS: 94V-2/94V-0
- ◆ COLOR: NATURAL/BLACK
- ◆ UNIT: mm



CHASSIS Ø3.0
P.C.B THICKNESS 1.8

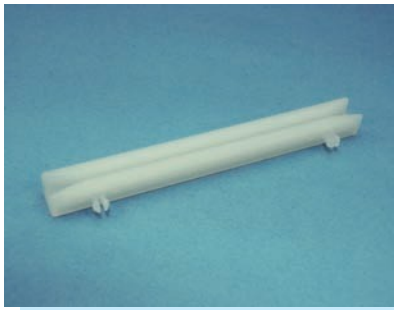
PART NO	PACKAGE
CGDLA-57	500



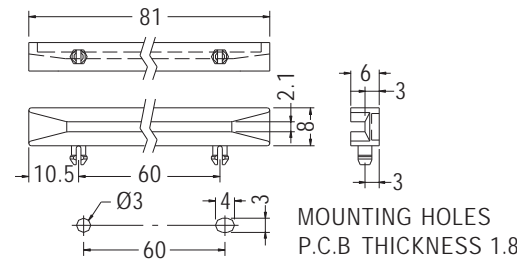
HOLE IN P.C.B Ø3.0
P.C.B THICKNESS 1.8

PART NO	PACKAGE
CGDLB-57	500

CARD GUIDE



- ◆ MATERIAL: NYLON 66 (UL)
- ◆ FLAME CLASS: 94V-2
- ◆ COLOR: NATURAL
- ◆ UNIT: mm



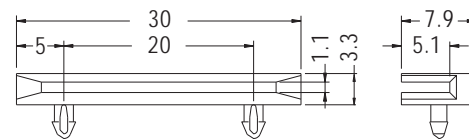
MOUNTING HOLES
P.C.B THICKNESS 1.8

PART NO	PACKAGE
CGLC-8	500

CARD GUIDE



- ◆ MATERIAL: NYLON 66 (UL)
- ◆ FLAME CLASS: 94V-2
- ◆ COLOR: BLACK
- ◆ UNIT: mm



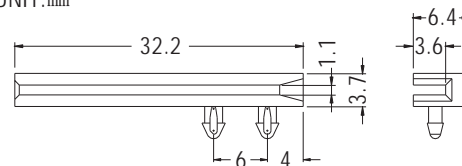
MOUNTING HOLES Ø2.0
P.C.B THICKNESS 1.6

PART NO	PACKAGE
CGLC-30	500

CARD GUIDE

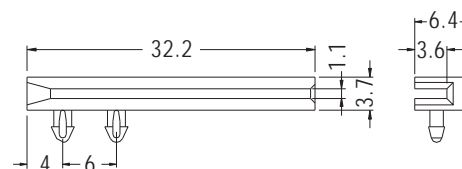


- ◆ MATERIAL: NYLON 66 (UL)
- ◆ FLAME CLASS: 94V-2
- ◆ COLOR: BLACK
- ◆ UNIT: mm



P.C.B Ø2.0
THICKNESS 1.6

PART NO	PACKAGE
CGLC-32-1	500



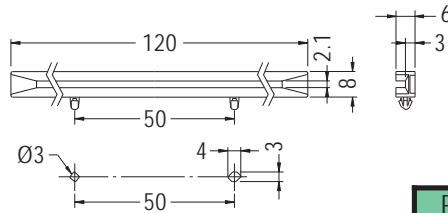
P.C.B Ø2.0
THICKNESS 1.6

PART NO	PACKAGE
CGLC-32-2	500



CARD GUIDE

- ◆ MATERIAL:NYLON 66 (UL)
- ◆ FLAME CLASS:94V-2/94V-0
- ◆ COLOR:NATURAL/BLACK
- ◆ UNIT:mm

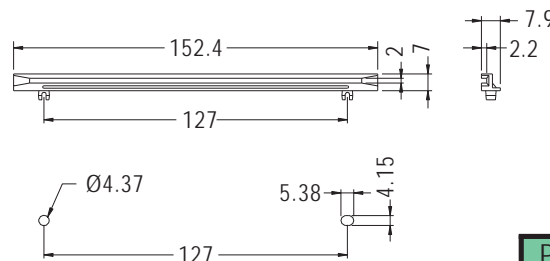


MOUNTING HOLES
CHASSIS THICKNESS: T

PARTNO	T	PACKAGE
CGLC-120	1.6~1.8	200
CGLC-120S	1.0	

CARD GUIDE

- ◆ MATERIAL:NYLON 66 (UL)
- ◆ FLAME CLASS:94V-2/94V-0
- ◆ COLOR:NATURAL/BLACK
- ◆ UNIT:mm

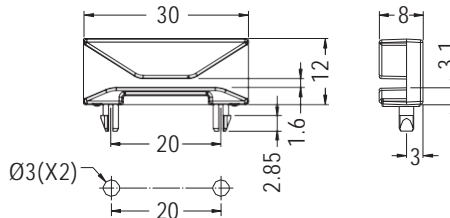
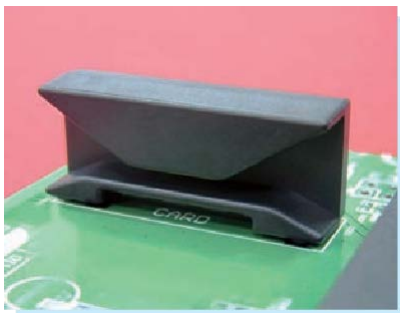


MOUNTING HOLES
THICKNESS 1.2~2.3

PARTNO	PACKAGE
CGLC-153	250

CARD GUIDE

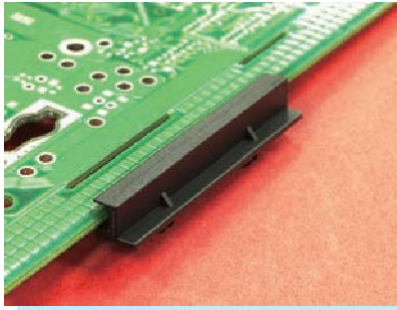
- ◆ MATERIAL:ABS (UL)
- ◆ FLAME CLASS:94HB/94V-0
- ◆ COLOR:BLACK
- ◆ UNIT:mm



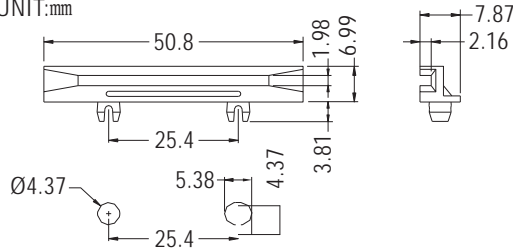
MOUNTING HOLES
CHASSIS THICKNESS 1.6

PARTNO	PACKAGE
CG-30	500

CARD GUIDE



- ◆ MATERIAL: NYLON 66 (UL)
- ◆ FLAME CLASS: 94V-2/94V-0
- ◆ COLOR: NATURAL/BLACK
- ◆ UNIT: mm



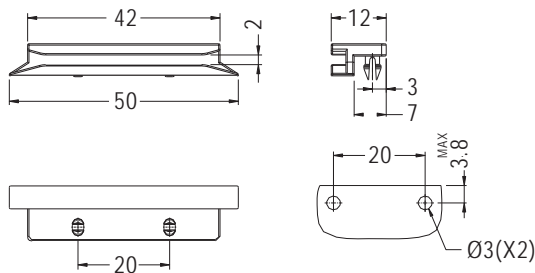
MOUNTING HOLES
THICKNESS 1.2~2.3

PART NO	PACKAGE
CGLC-50.8	1000

CARD GUIDE



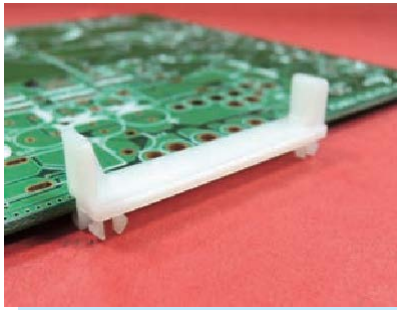
- ◆ MATERIAL: NYLON 66 (UL)
- ◆ FLAME CLASS: 94V-2/94V-0
- ◆ COLOR: NATURAL/BLACK
- ◆ UNIT: mm



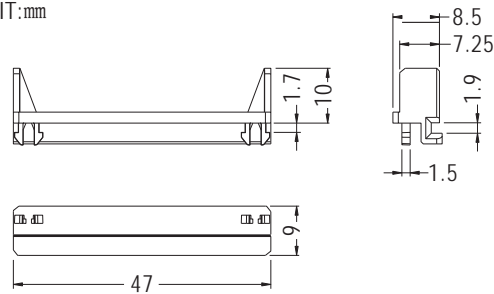
MOUNTING HOLES
THICKNESS 1.6

PART NO	PACKAGE
CGLD-50	500

CARD GUIDE



- ◆ MATERIAL: NYLON 66 (UL)
- ◆ FLAME CLASS: 94V-2/94V-0
- ◆ COLOR: NATURAL/BLACK
- ◆ UNIT: mm



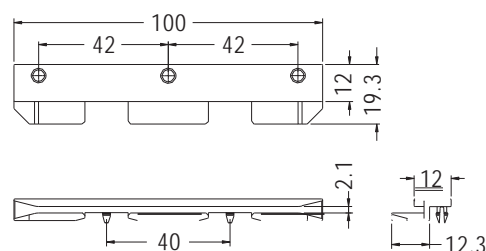
PART NO	PACKAGE
CGLG-47	1000

CARD GUIDE



NEW

- ◆ MATERIAL: NYLON 66 (UL)
- ◆ FLAME CLASS: 94V-2/94V-0
- ◆ COLOR: NATURAL/BLACK
- ◆ UNIT: mm

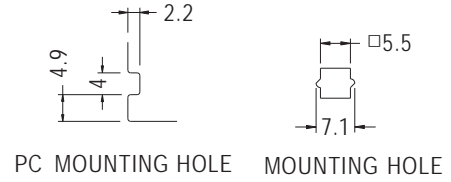
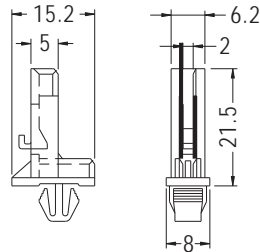


PART NO	PACKAGE
CGLI-100	1000

CARD GUIDE



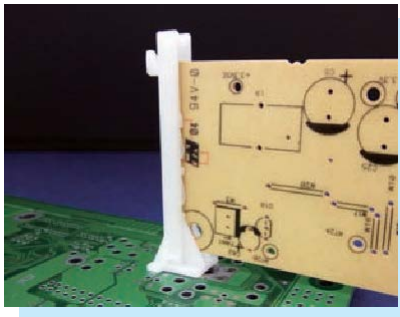
- ◆ MATERIAL: NYLON 66 (UL)
- ◆ FLAME CLASS: 94V-2/94V-0
- ◆ COLOR: NATURAL/BLACK
- ◆ UNIT: mm



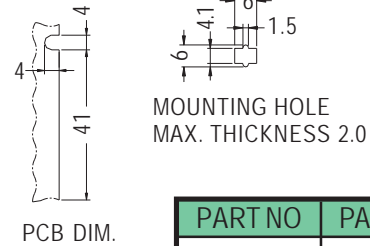
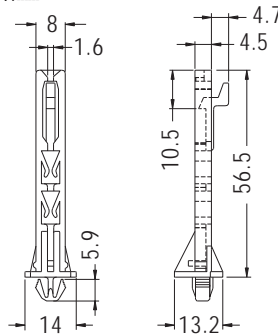
CHASSIS THICKNESS 1.0-2.0

PART NO	PACKAGE
CGH-1	500

CARD GUIDE

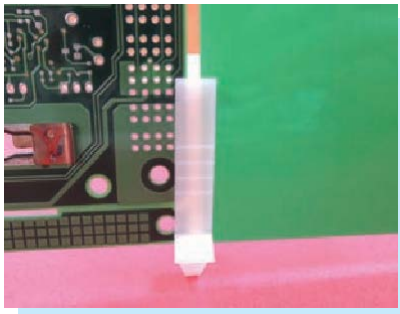


- ◆ MATERIAL: NYLON 66 (UL)
- ◆ FLAME CLASS: 94V-2/94V-0
- ◆ COLOR: NATURAL/BLACK
- ◆ UNIT: mm

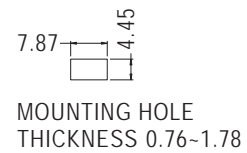
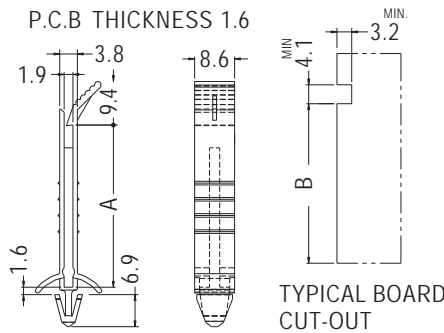


PART NO	PACKAGE
CGHI-1	500

CARD GUIDE

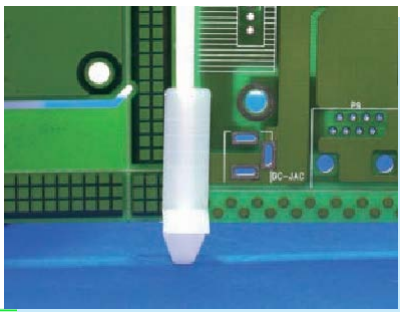


- ◆ MATERIAL: NYLON 66 (UL)
- ◆ FLAME CLASS: 94V-2/94V-0
- ◆ COLOR: NATURAL/BLACK
- ◆ UNIT: mm

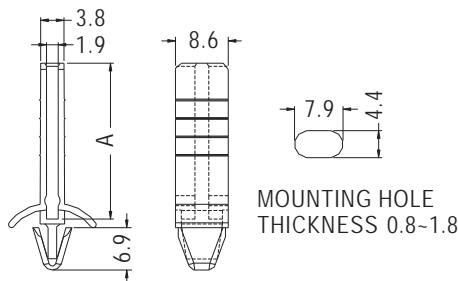


PART NO	A	B	PACKAGE
CGHE-22.4	22.4	22.0	
CGHE-34.9	34.9	34.5	500
CGHE-47.5	47.5	47.1	
CGHE-73.0	73.0	72.6	

CARD GUIDE



- ◆ MATERIAL: NYLON 66 (UL)
- ◆ FLAME CLASS: 94V-2/94V-0
- ◆ COLOR: NATURAL/BLACK
- ◆ UNIT: mm



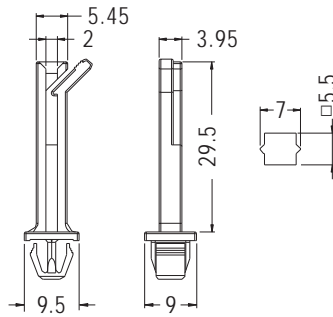
PART NO	A	PACKAGE
CGHC-25.4	25.4	
CGHC-38.1	38.1	500
CGHC-50.8	50.8	
CGHC-76.2	76.2	200



CARD GUIDE

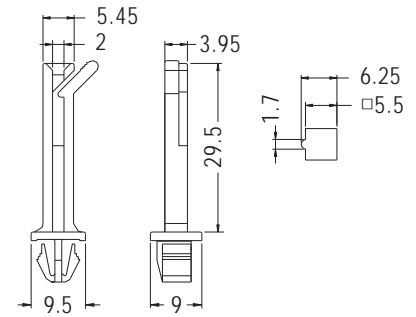


- ◆ MATERIAL: NYLON 66 (UL)
- ◆ FLAME CLASS: 94V-2/94V-0
- ◆ COLOR: NATURAL/BLACK
- ◆ UNIT: mm



MOUNTING HOLE THICKNESS 1.2-1.8

PART NO	PACKAGE
CGH-31	500

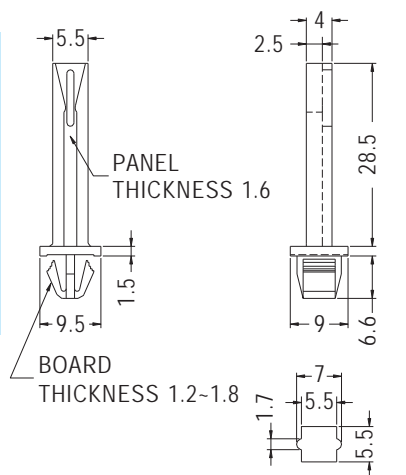
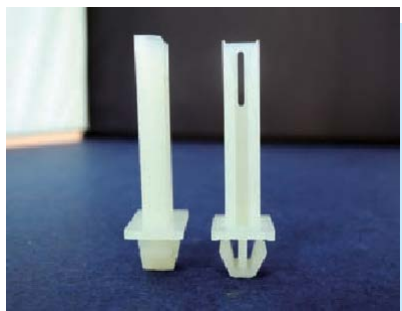


MOUNTING HOLE THICKNESS 2.0-3.0

PART NO	PACKAGE
CGH-31L	500

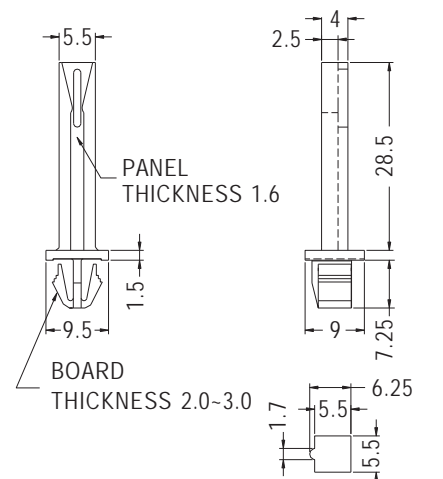
CARD GUIDE

- ◆ MATERIAL: NYLON 66 (UL)
- ◆ FLAME CLASS: 94V-2/94V-0
- ◆ COLOR: NATURAL/BLACK
- ◆ UNIT: mm



MOUNTING HOLE

PART NO	PACKAGE
CGH-37	1000

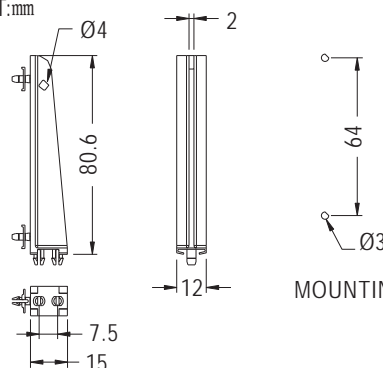


MOUNTING HOLE

PART NO	PACKAGE
CGH-37L	1000

CARD GUIDE

- ◆ MATERIAL: NYLON 66 (UL)
- ◆ FLAME CLASS: 94V-2/94V-0
- ◆ COLOR: NATURAL/BLACK
- ◆ UNIT: mm



MOUNTING HOLES

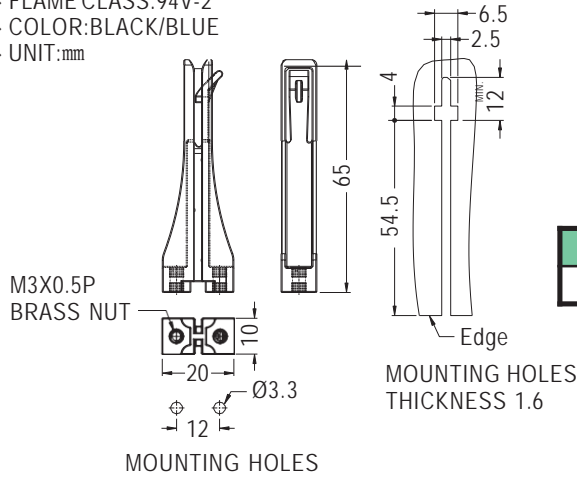
PART NO	PACKAGE
CGC-1	250



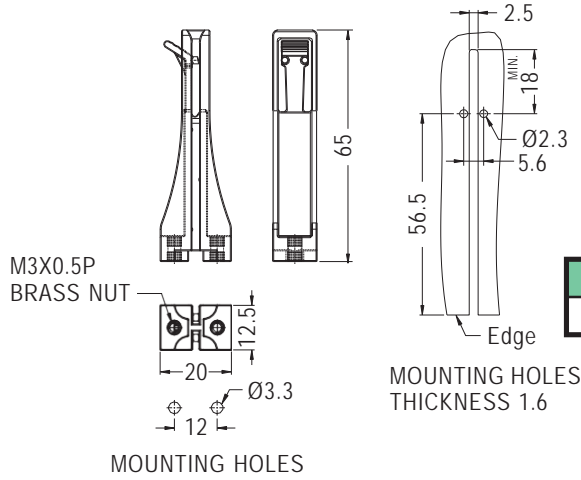
CARD GUIDE



- ◆ MATERIAL:PC+ABS (UL)
- ◆ FLAME CLASS:94V-2
- ◆ COLOR:BLACK/BLUE
- ◆ UNIT:mm

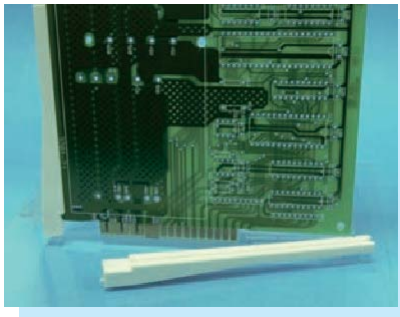


PART NO	PACKAGE
CGHA-65	500

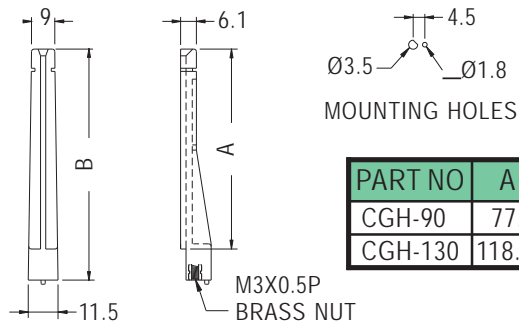


PART NO	PACKAGE
CGHB-65	500

CARD GUIDE

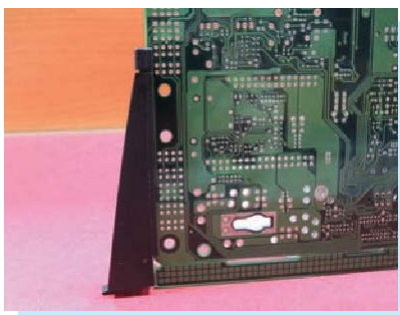


- ◆ MATERIAL:NYLON 66 (UL)
- ◆ FLAME CLASS:94V-2/94V-0
- ◆ COLOR:NATURAL/BLACK
- ◆ UNIT:mm

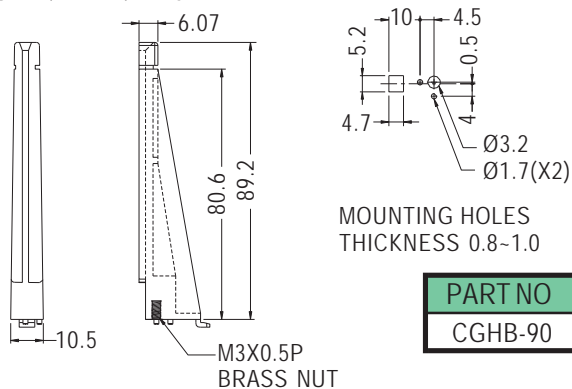


PART NO	A	B	PACKAGE
CGH-90	77.2	89.2	200
CGH-130	118.5	130.0	100

CARD GUIDE



- ◆ MATERIAL:NYLON 66 (UL)
- ◆ FLAME CLASS:94V-2/94V-0
- ◆ COLOR:NATURAL/WHITE/BLACK
- ◆ UNIT:mm

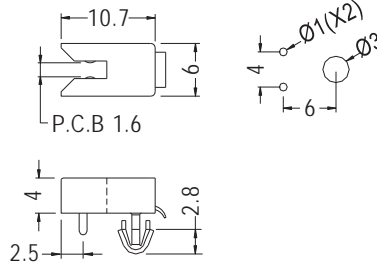
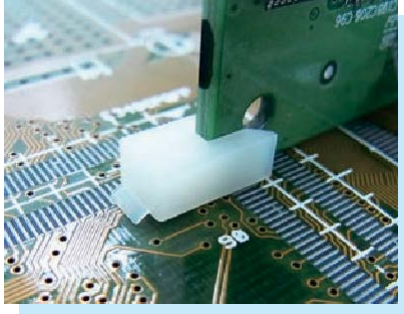


PART NO	PACKAGE
CGHB-90	1000



CARD GUIDE

- ◆ MATERIAL: NYLON 66 (UL)
- ◆ FLAME CLASS: 94V-2/94V-0
- ◆ COLOR: NATURAL/BLACK
- ◆ UNIT: mm

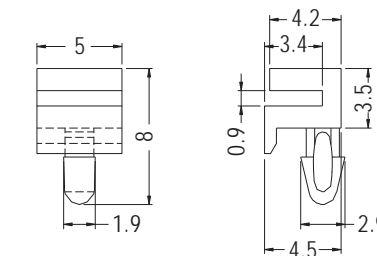
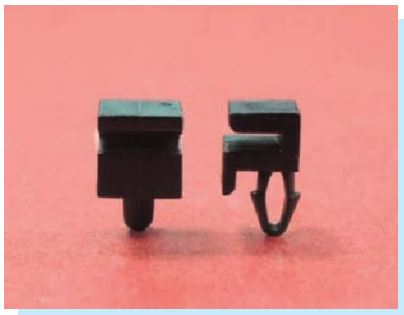


THICKNESS 1.6-1.8

PART NO	PACKAGE
ULCG-1	1000

CARD GUIDE

- ◆ MATERIAL: NYLON 66 (UL)
- ◆ FLAME CLASS: 94V-2/94V-0
- ◆ COLOR: NATURAL/BLACK
- ◆ UNIT: mm

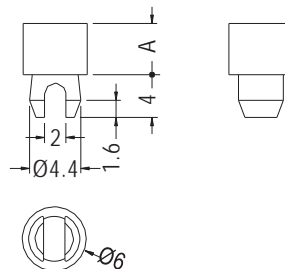
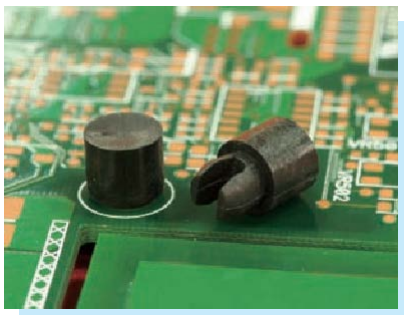


HOLE IN P.C.B Ø2.2
 THICKNESS 1.6

PART NO	PACKAGE
ULCG-2	1000

CARD GUIDE

- ◆ MATERIAL: NYLON 66 (UL)
- ◆ FLAME CLASS: 94V-2/94V-0
- ◆ COLOR: NATURAL/BLACK
- ◆ UNIT: mm



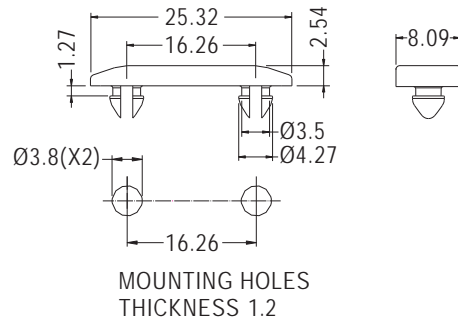
HOLE IN CHASSIS Ø4.3
 BOARD THICKNESS 1.6-2.0

PART NO	A	PACKAGE
CGB-2	2.0	2000
CGB-6	4.8	

CARD GUIDE



- ◆ MATERIAL: NYLON 66 (UL)
- ◆ FLAME CLASS: 94V-2/94V-0
- ◆ COLOR: NATURAL/BLACK
- ◆ UNIT: mm



PART NO	PACKAGE
INTEC-1	500

