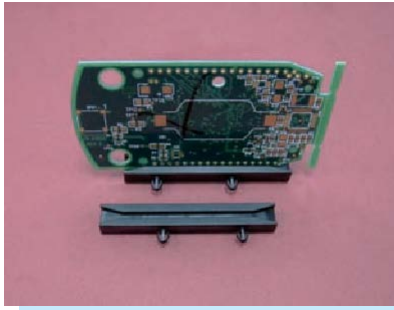
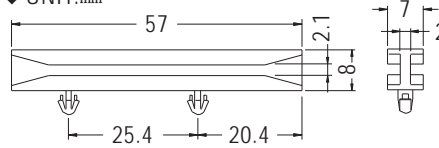


## CARD GUIDE

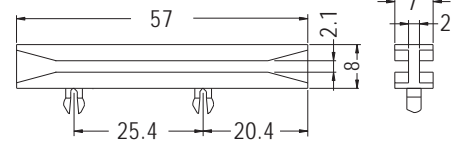


- ◆ MATERIAL: NYLON 66 (UL)
- ◆ FLAME CLASS: 94V-2/94V-0
- ◆ COLOR: NATURAL/BLACK
- ◆ UNIT: mm



CHASSIS Ø3.0  
P.C.B THICKNESS 1.8

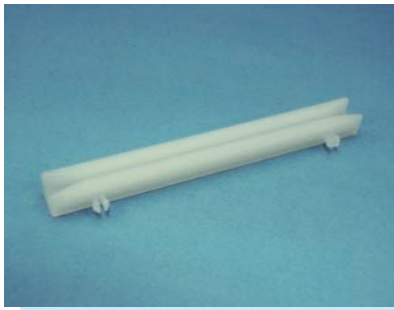
PART NO	PACKAGE
CGDLA-57	500



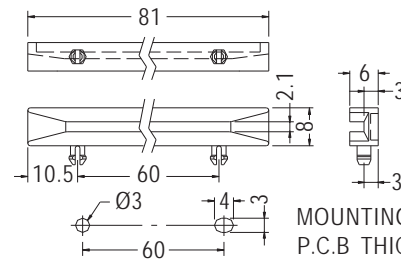
HOLE IN P.C.B Ø3.0  
P.C.B THICKNESS 1.8

PART NO	PACKAGE
CGDLB-57	500

## CARD GUIDE



- ◆ MATERIAL: NYLON 66 (UL)
- ◆ FLAME CLASS: 94V-2
- ◆ COLOR: NATURAL
- ◆ UNIT: mm



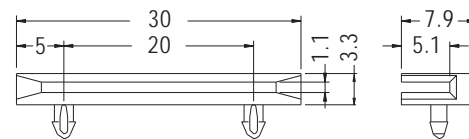
MOUNTING HOLES  
P.C.B THICKNESS 1.8

PART NO	PACKAGE
CGLC-8	500

## CARD GUIDE



- ◆ MATERIAL: NYLON 66 (UL)
- ◆ FLAME CLASS: 94V-2
- ◆ COLOR: BLACK
- ◆ UNIT: mm



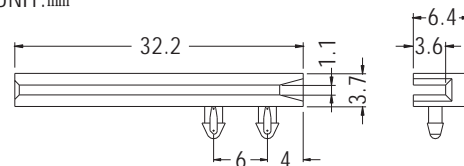
MOUNTING HOLES Ø2.0  
P.C.B THICKNESS 1.6

PART NO	PACKAGE
CGLC-30	500

## CARD GUIDE

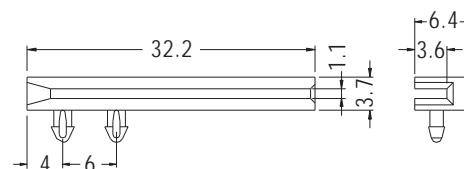


- ◆ MATERIAL: NYLON 66 (UL)
- ◆ FLAME CLASS: 94V-2
- ◆ COLOR: BLACK
- ◆ UNIT: mm



P.C.B Ø2.0  
THICKNESS 1.6

PART NO	PACKAGE
CGLC-32-1	500



P.C.B Ø2.0  
THICKNESS 1.6

PART NO	PACKAGE
CGLC-32-2	500

