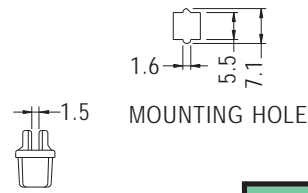
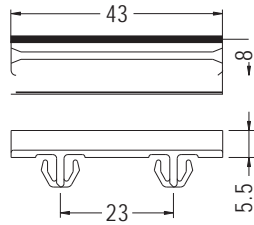
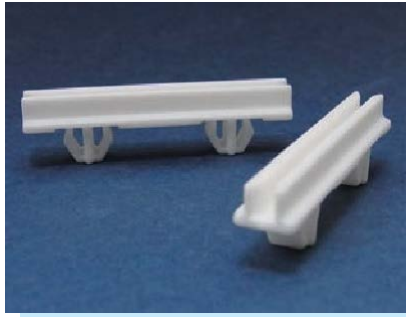


CARD GUIDE

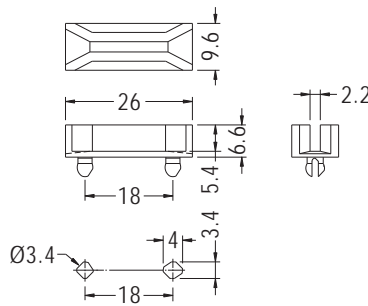
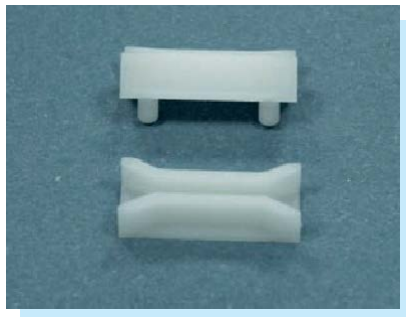
- ◆ MATERIAL: NYLON 66 (UL)
- ◆ FLAME CLASS: 94V-2/94V-0
- ◆ COLOR: NATURAL/BLACK
- ◆ UNIT: mm



PARTNO	PACKAGE
CG-43	500

CARD GUIDE

- ◆ MATERIAL: NYLON 66 (UL)
- ◆ FLAME CLASS: 94V-2/94V-0
- ◆ COLOR: NATURAL/BLACK
- ◆ UNIT: mm

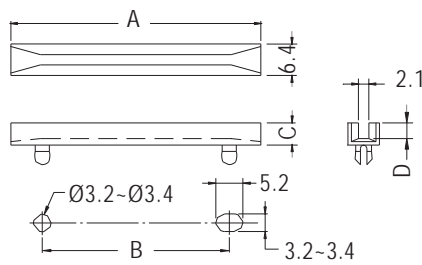
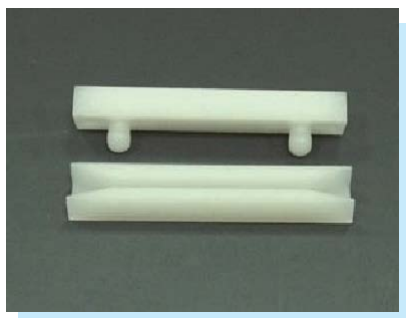


MOUNTING HOLES

PARTNO	PACKAGE
CG-26	500

CARD GUIDE

- ◆ MATERIAL: NYLON 66 (UL)
- ◆ FLAME CLASS: 94V-2/94V-0
- ◆ COLOR: NATURAL/BLACK
- ◆ UNIT: mm



MOUNTING HOLES
 CHASSIS THICKNESS 0.8~1.2

PARTNO	A	B	C	D	E	PACKAGE
CG-38	38.0	25.4	4.5	3.2	0.8~1.2	500
CG-38L	38.0	25.4	4.6	3.0	1.0~1.6	
CG-50	50.8	38.0	4.5	3.2	0.8~1.2	
CG-50S	50.8	38.0	2.5	1.2	0.8~1.2	

