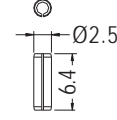
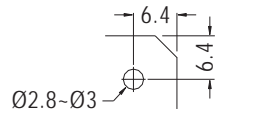
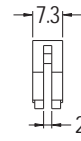
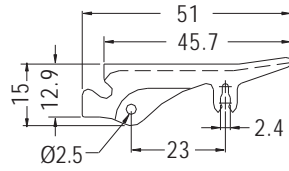


CARD PULLER



- ◆ MATERIAL: NYLON 66 (UL)
- ◆ FLAME CLASS: 94V-2/94V-0
- ◆ PIN MATERIAL: STEEL
- ◆ COLOR: NATURAL/BLACK
- ◆ UNIT: mm



MOUNTING HOLE

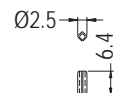
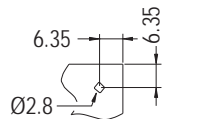
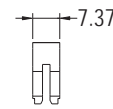
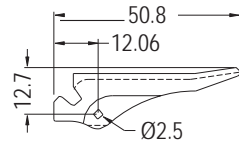
PIN

PART NO	PACKAGE
CP-37	250

CARD PULLER



- ◆ MATERIAL: NYLON 66 (UL)
- ◆ FLAME CLASS: 94V-2/94V-0
- ◆ PIN MATERIAL: STEEL
- ◆ COLOR: NATURAL/BLACK
- ◆ UNIT: mm



MOUNTING HOLE
THICKNESS 1.6

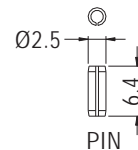
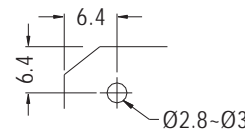
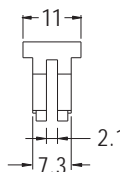
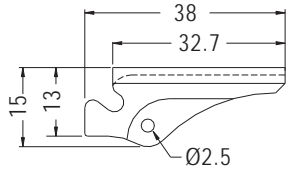
PIN

PART NO	PACKAGE
CP-38	1000

CARD PULLER



- ◆ MATERIAL: NYLON 66 (UL)
- ◆ FLAME CLASS: 94V-2/94V-0
- ◆ PIN MATERIAL: STEEL
- ◆ COLOR: NATURAL/BLACK
- ◆ UNIT: mm

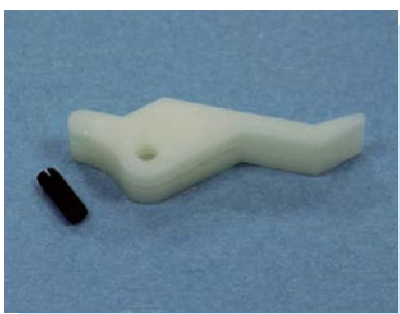


MOUNTING HOLE

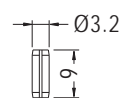
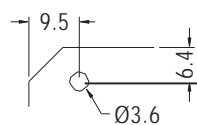
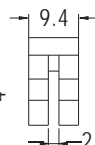
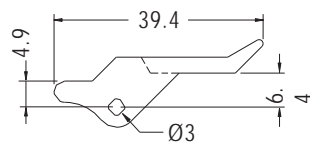
PIN

PART NO	PACKAGE
CP-47	500

CARD PULLER



- ◆ MATERIAL: NYLON 66 (UL)
- ◆ FLAME CLASS: 94V-2/94V-0
- ◆ PIN MATERIAL: STEEL
- ◆ COLOR: NATURAL/BLACK
- ◆ UNIT: mm



MOUNTING HOLE

PIN

PART NO	PACKAGE
CP-50	500

