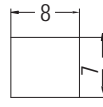
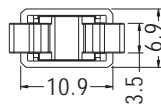


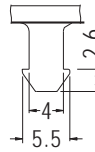
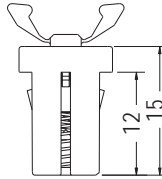
# DOOR LOCK



- ◆ CATCHER MAT'L: NYLON 66 (UL)/94V-2
- ◆ CASE MAT'L: POM (UL)/94HB
- ◆ COLOR: BLACK/GRAY
- ◆ UNIT: mm



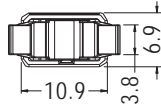
MOUNTING HOLE THICKNESS 2.0



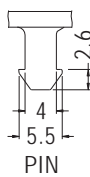
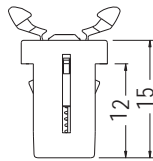
PIN

PART NO	PACKAGE
DT-1	500

- ◆ CATCHER MAT'L: NYLON 66 (UL)/94V-2
- ◆ CASE MAT'L: POM (UL)/94V-0
- ◆ COLOR: BLACK
- ◆ UNIT: mm



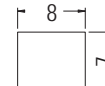
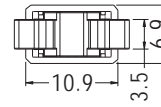
MOUNTING HOLE THICKNESS 2.0



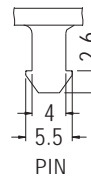
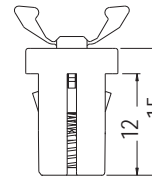
PIN

PART NO	PACKAGE
DT-16	500

- ◆ CATCHER MAT'L: NYLON 66 (UL)/94V-2
- ◆ CASE MAT'L: POM
- ◆ COLOR: BLACK
- ◆ UNIT: mm



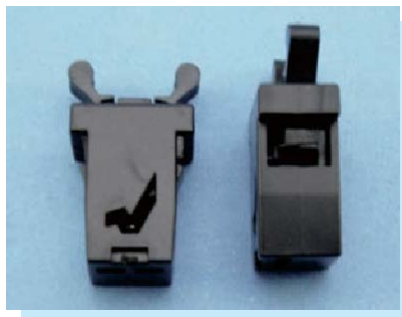
MOUNTING HOLE THICKNESS 2.0



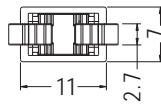
PIN

PART NO	PACKAGE
DT-18	500

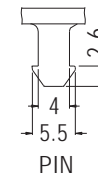
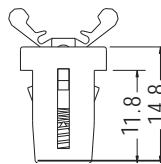
# DOOR LOCK



- ◆ CATCHER MAT'L: NYLON 66 (UL)/94V-2
- ◆ CASE MAT'L: POM (UL)/94HB
- ◆ COLOR: BLACK
- ◆ UNIT: mm



MOUNTING HOLE THICKNESS 2.0



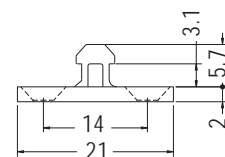
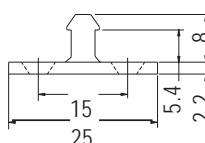
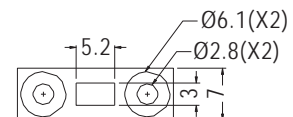
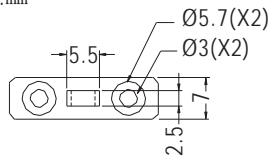
PIN

PART NO	PACKAGE
DT-4	500

# DOOR LOCK



- ◆ MATERIAL: ABS (UL)
- ◆ FLAME CLASS: 94HB
- ◆ COLOR: BLACK
- ◆ UNIT: mm



PART NO	PACKAGE
DTA-1	500

PART NO	PACKAGE
DTA-3	500

