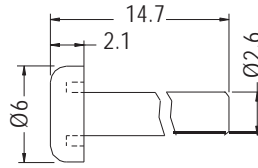


PIN



- ◆ MATERIAL: NYLON 66 (UL)
- ◆ FLAME CLASS: 94V-2/94V-0
- ◆ COLOR: NATURAL/BLACK
- ◆ UNIT: mm



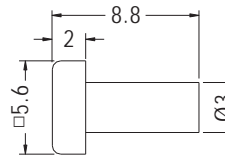
PART NO	PACKAGE
CNPS8000	1000

7

PIN



- ◆ MATERIAL: ABS (UL)
- ◆ FLAME CLASS: 94HB
- ◆ COLOR: BLACK
- ◆ UNIT: mm

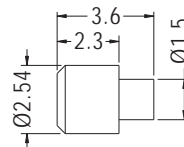


PART NO	PACKAGE
ACSR-7	2000

PIN

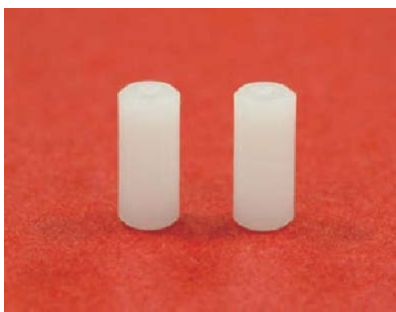


- ◆ MATERIAL: NYLON 66 (UL)
- ◆ FLAME CLASS: 94V-2/94V-0
- ◆ COLOR: NATURAL/BLACK/WHITE
- ◆ UNIT: mm

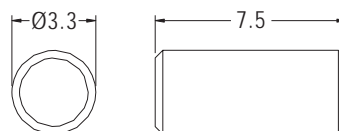


PART NO	PACKAGE
BPLTA-3	2000

PIN



- ◆ MATERIAL: POM
- ◆ COLOR: NATURAL
- ◆ UNIT: mm



PART NO	PACKAGE
PIN3.3-7.5	2000

