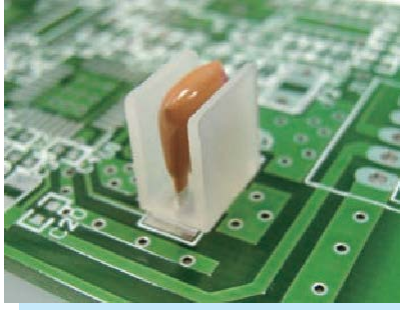
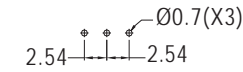
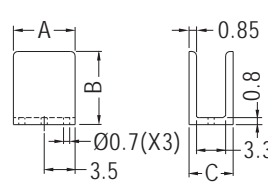


CRYSTAL WASHER



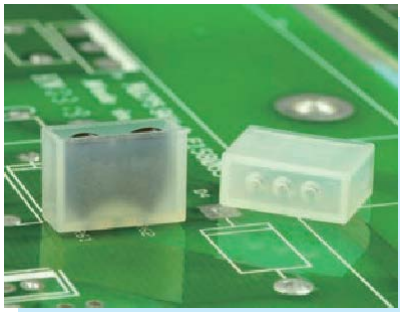
- ◆ MATERIAL: NYLON 66 (UL)
- ◆ FLAME CLASS: 94V-2/94V-0
- ◆ COLOR: NATURAL/BLACK
- ◆ UNIT: mm



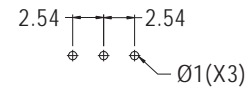
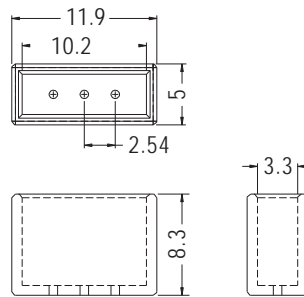
MOUNTING HOLES

| PARTNO | A | B | C | PACKAGE |
|--------|-----|-----|-----|---------|
| QCL-3 | 7.0 | 8.3 | 5.0 | 1000 |

CRYSTAL WASHER



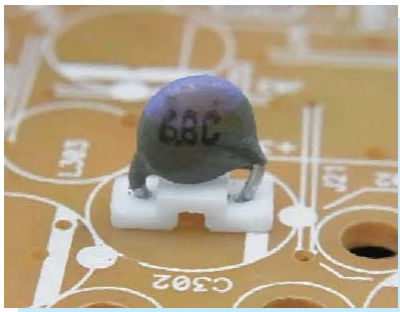
- ◆ MATERIAL: NYLON 66 (UL)
- ◆ FLAME CLASS: 94V-2/94V-0
- ◆ COLOR: NATURAL/BLACK
- ◆ UNIT: mm



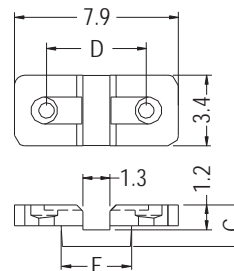
MOUNTING HOLES

| PARTNO | PACKAGE |
|--------|---------|
| QCL-1 | 1000 |

CAPACITOR WASHER

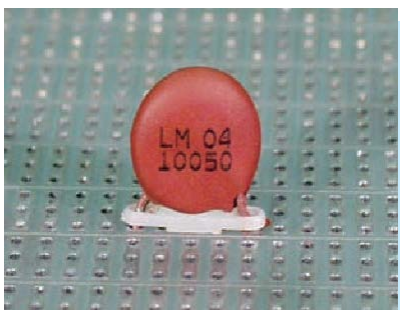


- ◆ MATERIAL: NYLON 66 (UL)
- ◆ FLAME CLASS: 94V-2/94V-0
- ◆ COLOR: NATURAL/BLACK
- ◆ UNIT: mm

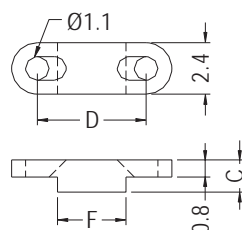


| PARTNO | C | D | F | PACKAGE |
|--------|-----|-----|-----|---------|
| CWT-11 | 2.0 | 4.8 | 3.4 | 2000 |

CAPACITOR WASHER



- ◆ MATERIAL: NYLON 66 (UL)
- ◆ FLAME CLASS: 94V-2/94V-0
- ◆ COLOR: NATURAL/BLACK
- ◆ UNIT: mm



| PARTNO | C | D | F | PACKAGE |
|--------|-----|------|-----|---------|
| CWT-5 | 1.5 | 5.08 | 3.2 | 2000 |
| CWT-8 | 1.2 | 7.6 | 4.0 | |
| CWT-10 | 1.2 | 10.1 | 5.0 | |

