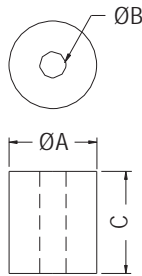
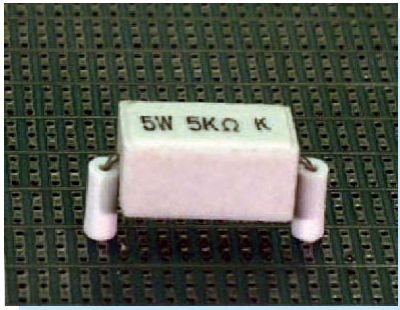


# CERAMIC PARTS WASHER

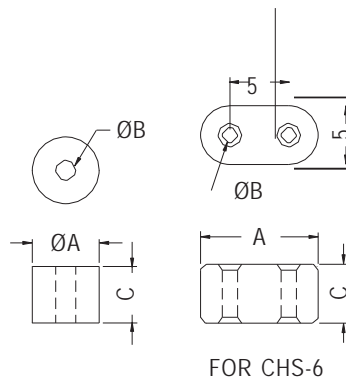
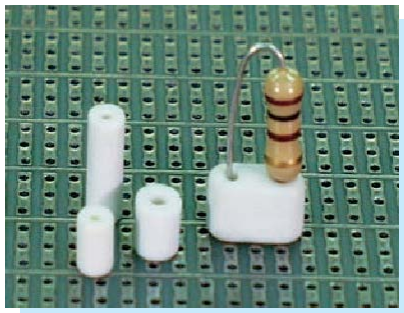
- ◆ MATERIAL:PBT (UL)/NYLON 6 (UL)
- ◆ FLAME CLASS:94V-2/94V-0
- ◆ COLOR:NATURAL/WHITE
- ◆ UNIT:mm



PART NO	A	B	C	PACKAGE
PW-1	4.0	1.4	4.2	2000
PW-1A	4.5	1.8	4.2	
PW-2	4.0	1.4	8.0	1000
PW-3	4.0	1.3	3.0	2000
PW-4	3.5	1.3	3.6	
PW-5	5.0	2.0	2.0	
PW-6	3.2	1.4	2.5	
PW-7	3.2	1.4	1.0	
PW-8	2.4	1.3	3.1	1000
PW-9	4.4	1.6	7.0	
PW-10	2.5	1.25	5.0	2000
PW-11	2.2	0.8	5.0	
PW-12	2.8	1.3	1.8	
PW-13	2.5	1.1	2.5	1000
PW-14	3.2	0.8	7.9	
PW-15	2.2	0.9	10.5	
★PW-16	3.2	0.8	1.5	2000

# CERAMIC PARTS WASHER

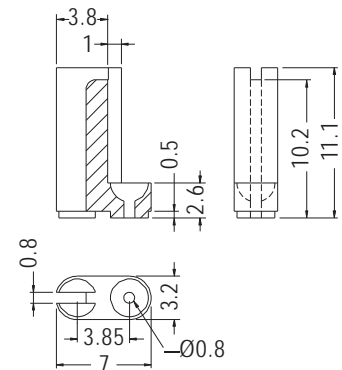
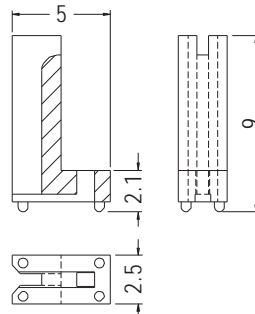
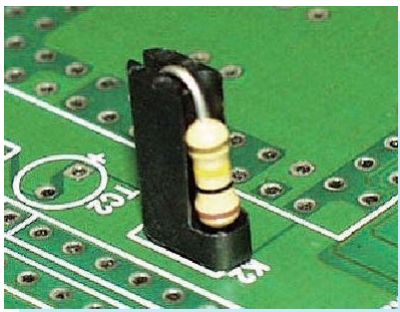
- ◆ MATERIAL:CERAMIC
- ◆ COLOR:NATURAL/WHITE
- ◆ UNIT:mm



PART NO	A	B	C	PACKAGE
CHS-1	3.8	1.0	4.5	2000
CHS-2	3.8	1.0	9.0	
CHS-3	4.5	1.8	3.0	
CHS-4	4.5	1.8	4.5	
CHS-5	4.5	1.8	9.0	
CHS-6	10.0	1.3	5.0	
CHS-7	2.6	0.9	6.9	
CHS-8	2.5	1.1	3.1	
CHS-9	4.1	1.9	15.4	
CHS-10	4.1	1.9	13.0	
★CHS-18	4.0	1.6	15.0	
★CHS-19	4.5	1.8	2.0	2000

# ELECTRIC RESISTANCE HOLDER

- ◆ MATERIAL:PPS (UL)
- ◆ FLAME CLASS:94V-0
- ◆ COLOR:BLACK
- ◆ UNIT:mm



PART NO	PACKAGE
RPCL-9	2000

PART NO	PACKAGE
RPCL-11	2000

