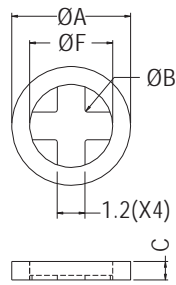
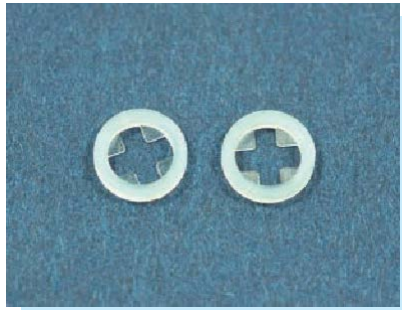


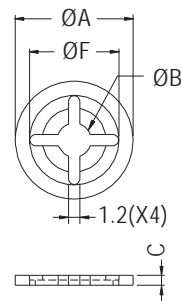
# SCREW WASHER

- ◆ MATERIAL: NYLON 66 (UL)
- ◆ FLAME CLASS: 94V-2/94V-0
- ◆ COLOR: NATURAL/BLACK
- ◆ UNIT: mm



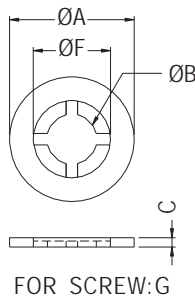
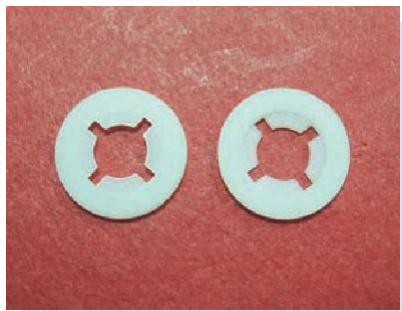
FOR SCREW: G

PART NO	A	B	C	F	G	PACKAGE
KWS-2	5.15	1.8	0.8	3.6	M2	2000



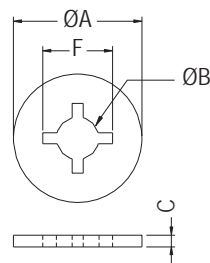
FOR SCREW: G

PART NO	A	B	C	F	G	PACKAGE
KWS-3.6	12.5	3.6	1.05	9.5	M4	2000



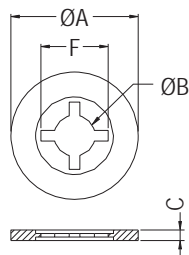
FOR SCREW: G

PART NO	A	B	C	F	G	PACKAGE
KWS-3.8	9.92	3.86	0.81	5.97	M4	2000
KWS-5S	11.45	4.6	0.85	7.1	M5	



FOR SCREW: G

PART NO	A	B	C	F	G	PACKAGE
KWS-6L	17.5	5.8	1.6	9.5	M5	2000



FOR SCREW: G

PART NO	A	B	C	F	G	PACKAGE
KWS-6-1	18.0	5.6	1.6	9.5	M5	2000

