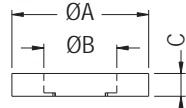
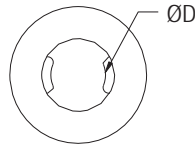


SCREW WASHER

- ◆ MATERIAL:PE/LDPE
- ◆ COLOR:NATURAL/BLUE/GREEN
- ◆ UNIT:mm

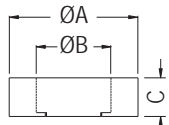
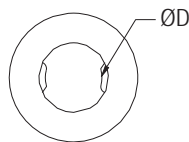


FOR SCREW:G

PARTNO	A	B	C	D	G	PACKAGE
KWSP-2.5	5.0	2.7	1.0	2.0	M2.6	2000
KWSP-2.6	6.0	3.2	1.0	2.4	M3	
KWSP-9	18.0	10.5	1.5	8.7	M9	1000

SCREW WASHER

- ◆ MATERIAL:NYLON 66 (UL)
- ◆ FLAME CLASS:94V-2/94V-0
- ◆ COLOR:NATURAL/BLACK
- ◆ UNIT:mm

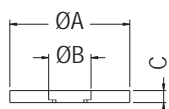
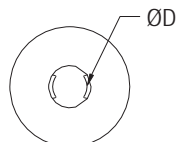


FOR SCREW:G

PARTNO	A	B	C	D	G	PACKAGE
KWSP2-1	5.0	2.7	1.0	2.2	M2.6	2000
KWSP2-1.5	5.0	2.7	1.5	2.2	M2.6	

SCREW WASHER

- ◆ MATERIAL:NYLON 66 (UL)
- ◆ FLAME CLASS:94V-2/94V-0
- ◆ COLOR:NATURAL/BLACK
- ◆ UNIT:mm



FOR SCREW:G

PART NO	A	B	C	D	G	PACKAGE
KWSP5-15	15.0	5.3	1.5	4.3	M5	1000

